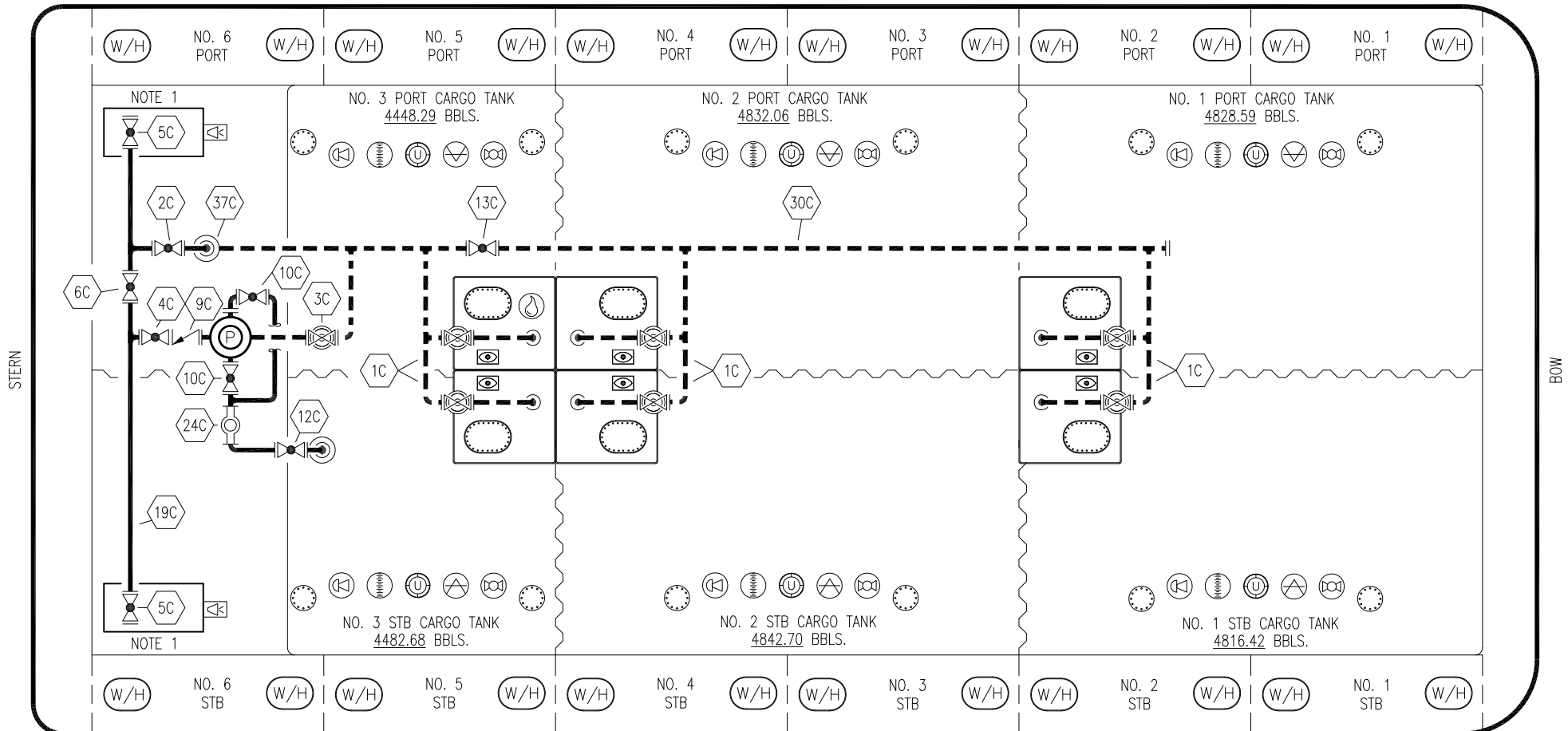


PORT




STARBOARD

- | | | | |
|-----|---------------------------------|-----|-----------------------|
| NO | DESCRIPTION | NO | DESCRIPTION |
| 1C | CARGO TANK VALVE | 19C | CARGO HEADER |
| 2C | LOAD VALVE | 24C | FLOW INDICATOR |
| 3C | MASTER SUCTION VALVE | 30C | CARGO PIPELINE |
| 4C | DISCHARGE VALVE | 37C | CARGO DROP |
| 5C | HEADER VALVE | — | — ABOVE DECK PIPING |
| 6C | SALVAGE VALVE | --- | --- BELOW DECK PIPING |
| 9C | CARGO CHECK VALVE | | |
| 10C | BURP VALVE | | |
| 12C | BURP VALVE RETURN TO CARGO TANK | | |
| 13C | CARGO BLOCK VALVE | | |

NOTE 1: CONTAINMENT P/S

TRINITY MARINE

REV.	DATE	BY	CHK	APP	REVISION DESCRIPTION
1	06/02/20	MRV	DDA	DR	REVISED PER CLIENT COMMENTS
0	04/13/09	WK	RB	OF	APPROVED



KIRBY INLAND MARINE

CARGO

PIPING FLOW DIAGRAM

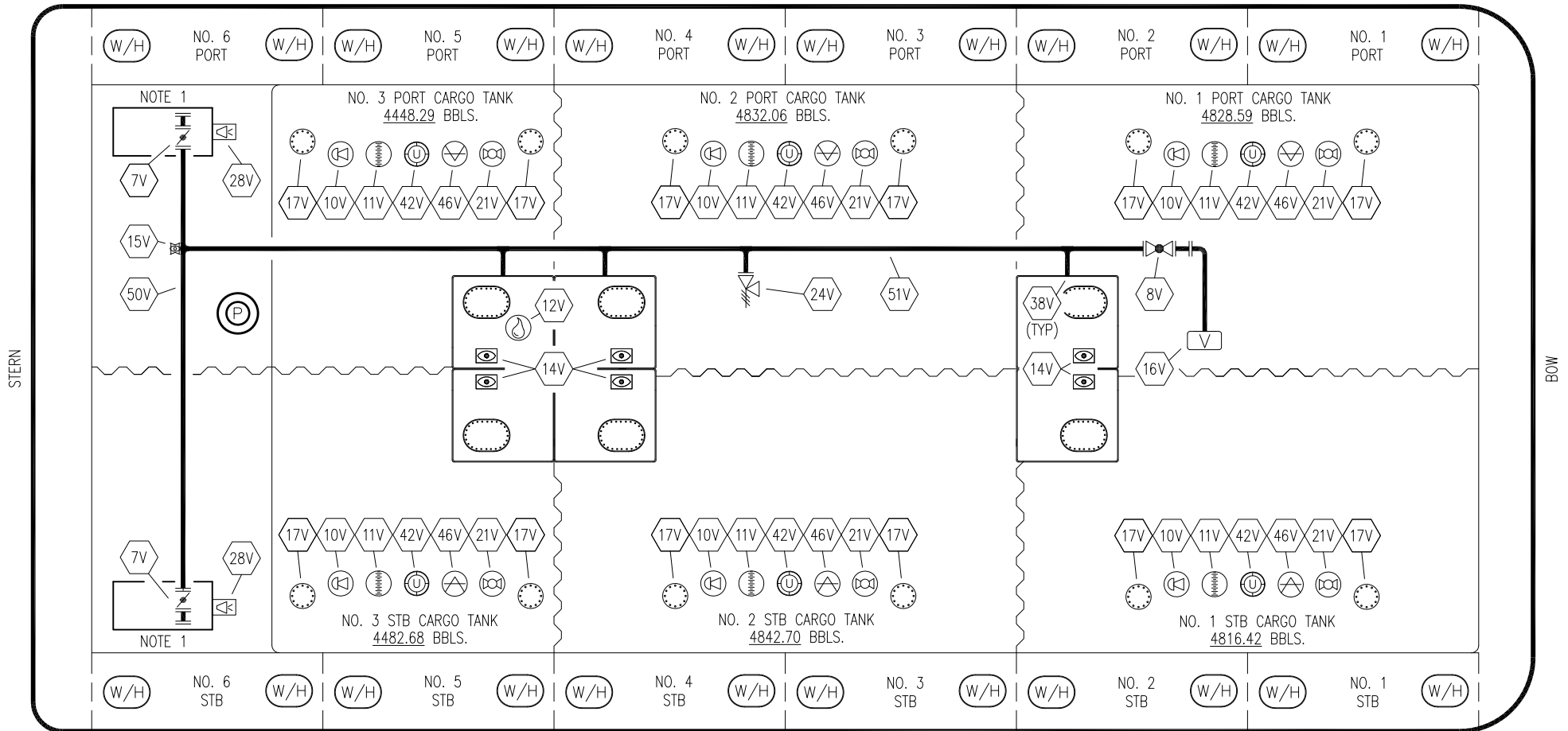
KIRBY 28072

SCALE: NONE

PAGE: 1 OF 3

REV. **1**

PORT



STARBOARD

NO	SIZE	DESCRIPTION	NO	SIZE	DESCRIPTION
1S		SLOP TANK (3000 GAL.)	24V	6"	PRESSURE RELIEF VALVE
7V	8"	HEADER VALVE	28V		HIGH LEVEL DOCK ALARM
8V	8"	VENT STACK VALVE	38V		VAPOR PENETRATION
10V	8"	HIGH LEVEL/OVERFILL ALARM	42V	10"	ULLAGE
11V	8"	1 METER GAUGE STICK	46V	2"	SOUNDING TUBE
12V	2"	HERMETIC SAMPLE	50V		VAPOR HEADER
14V	8"	SIGHT GLASS	51V		VAPOR PIPELINE
15V	2"	INSPECTION PORT			ABOVE DECK PIPING
16V	8"	VAPOR VENT STACK			
17V	19"	BUTTERWORTH			
19V		EMERGENCY SHUTDOWN			
21V	2"	HERMETIC GAUGE			

NOTE 1: CONTAINMENT P/S

REV.	DATE	BY	CHK	APP	REVISION DESCRIPTION
1	06/02/20	MRV	DDA	DR	REVISED PER CLIENT COMMENTS
0	04/13/08	WK	RB	OF	APPROVED

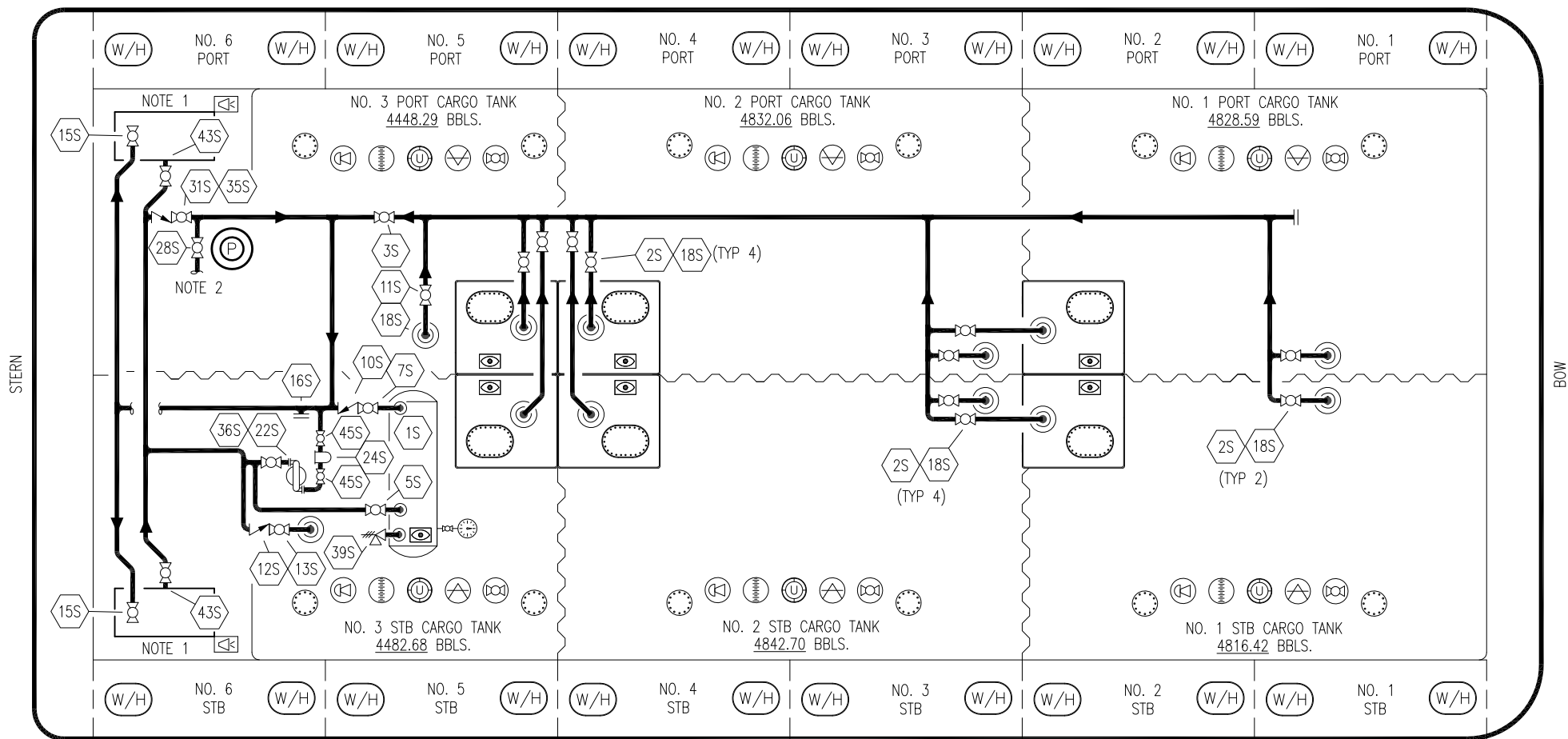
TRINITY MARINE

KIRBY INLAND MARINE

VAPOR PIPING FLOW DIAGRAM

SCALE: NONE	KIRBY 28072	REV. 1
PAGE: 2 OF 3		

PORT



STARBOARD

- | | | | |
|-----|------------------------------|-----|------------------------------|
| NO | DESCRIPTION | NO | DESCRIPTION |
| 1S | SLOP TANK | 18S | STRIPPING DROP |
| 2S | VALVE CARGO TANK | 22S | STRIPPING PUMP |
| 3S | VALVE MAIN CARGO PIPING | 24S | BASKET STRAINER |
| 5S | SLOP TANK SUCTION VALVE | 26S | STRIPPING HEADER BLOCK VALVE |
| 7S | SLOP TANK VALVE | 28S | CARGO HEADER STRIPPING VALVE |
| 10S | SLOP TANK CHECK VALVE | 31S | CHECK VALVE |
| 11S | CARGO PIPELINE SUCTION VALVE | 33S | PUMP WELL SUCTION |
| 12S | RETURN TO CARGO TANK VALVE | 35S | STRIPPING VALVE |
| 13S | RETURN TO CARGO CHECK VALVE | 36S | STRIPPING PUMP DISCHARGE |
| 15S | DISCHARGE CARGO VALVE | 39S | PRESSURE/ VACUUM VALVE |
| 16S | REMOTE SUCTION CONNECTION | 43S | DRIP PAN SUCTION VALVE |

- | | |
|-----|------------------------------|
| NO | DESCRIPTION |
| 45S | STRIPPING PUMP SUCTION VALVE |
| — | ABOVE DECK PIPING |

NOTE 1: CONTAINMENT P/S
NOTE 2: TO CARGO PUMP DISCHARGE

1	06/02/20	MRV	DDA	DR	REVISED PER CLIENT COMMENTS
0	04/13/09	WK	RB	OF	APPROVED
REV.	DATE	BY	CHK	APP	REVISION DESCRIPTION



KIRBY INLAND MARINE

**STRIPPING
PIPING FLOW DIAGRAM**

KIRBY 28072

SCALE: NONE	REV. 1
PAGE: 3 OF 3	