

- |     |                      |     |                       |
|-----|----------------------|-----|-----------------------|
| NO  | DESCRIPTION          | NO  | DESCRIPTION           |
| 1C  | CARGO TANK VALVE     | 19C | CARGO HEADER          |
| 2C  | LOAD VALVE           | 30C | CARGO PIPELINE        |
| 3C  | MASTER SUCTION VALVE | 37C | CARGO DROP            |
| 4C  | DISCHARGE VALVE      | —   | — ABOVE DECK PIPING   |
| 5C  | HEADER VALVE         | --- | --- BELOW DECK PIPING |
| 6C  | SALVAGE VALVE        |     |                       |
| 8C  | RELIEF VALVE         |     |                       |
| 9C  | CARGO CHECK VALVE    |     |                       |
| 13C | CARGO BLOCK VALVE    |     |                       |

NOTE 1: CONTAINMENT P/S

1	06/02/20	MRV	DDA	DR	REVISED PER CLIENT COMMENTS	
0	03/30/09	WK	RB	OF	APPROVED	
REV.	DATE	BY	CHK	APP	REVISION	DESCRIPTION

TRINITY MARINE

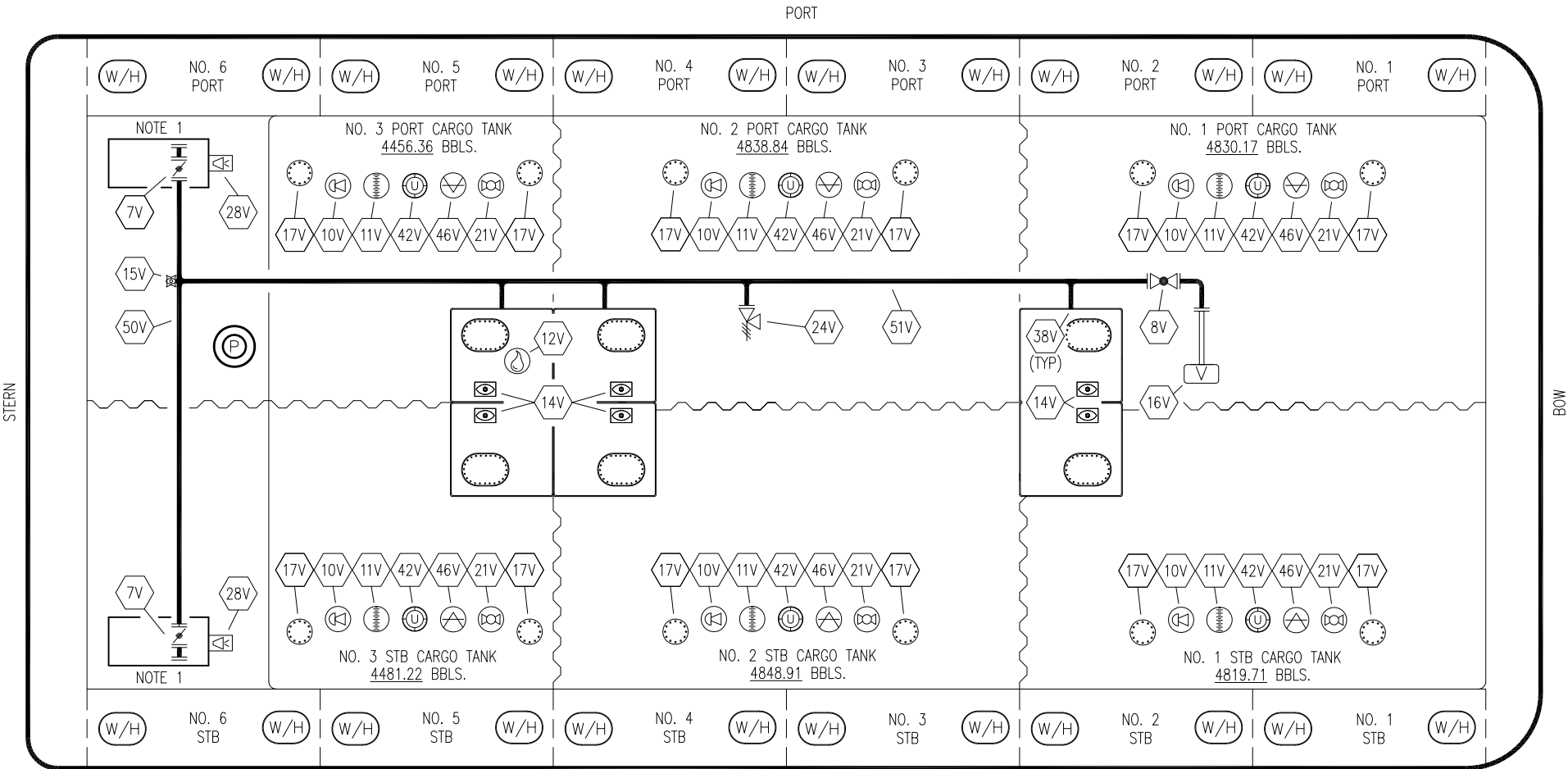
**KIRBY INLAND MARINE**

**CARGO  
PIPING FLOW DIAGRAM**

SCALE: NONE  
PAGE: 1 OF 3

**KIRBY 28071**

REV. **1**



STERN

BOW

NO	SIZE	DESCRIPTION	NO	SIZE	DESCRIPTION
1S		SLOP TANK (3000 GAL.)	24V	6"	PRESSURE RELIEF VALVE
7V	8"	HEADER VALVE	28V		HIGH LEVEL DOCK ALARM
8V	8"	VENT STACK VALVE	38V		VAPOR PENETRATION
10V	8"	HIGH LEVEL/OVERFILL ALARM	42V	10"	ULLAGE
11V	8"	1 METER GAUGE STICK	46V	2"	SOUNDING TUBE
12V	2"	HERMETIC SAMPLE	50V		VAPOR HEADER
14V	8"	SIGHT GLASS	51V		VAPOR PIPELINE
15V	2"	INSPECTION PORT			ABOVE DECK PIPING
16V	8"	VAPOR VENT STACK			
17V	19"	BUTTERWORTH			
19V		EMERGENCY SHUTDOWN SYSTEM			
21V	2"	HERMETIC GAUGE			

STARBOARD

NOTE 1: CONTAINMENT P/S

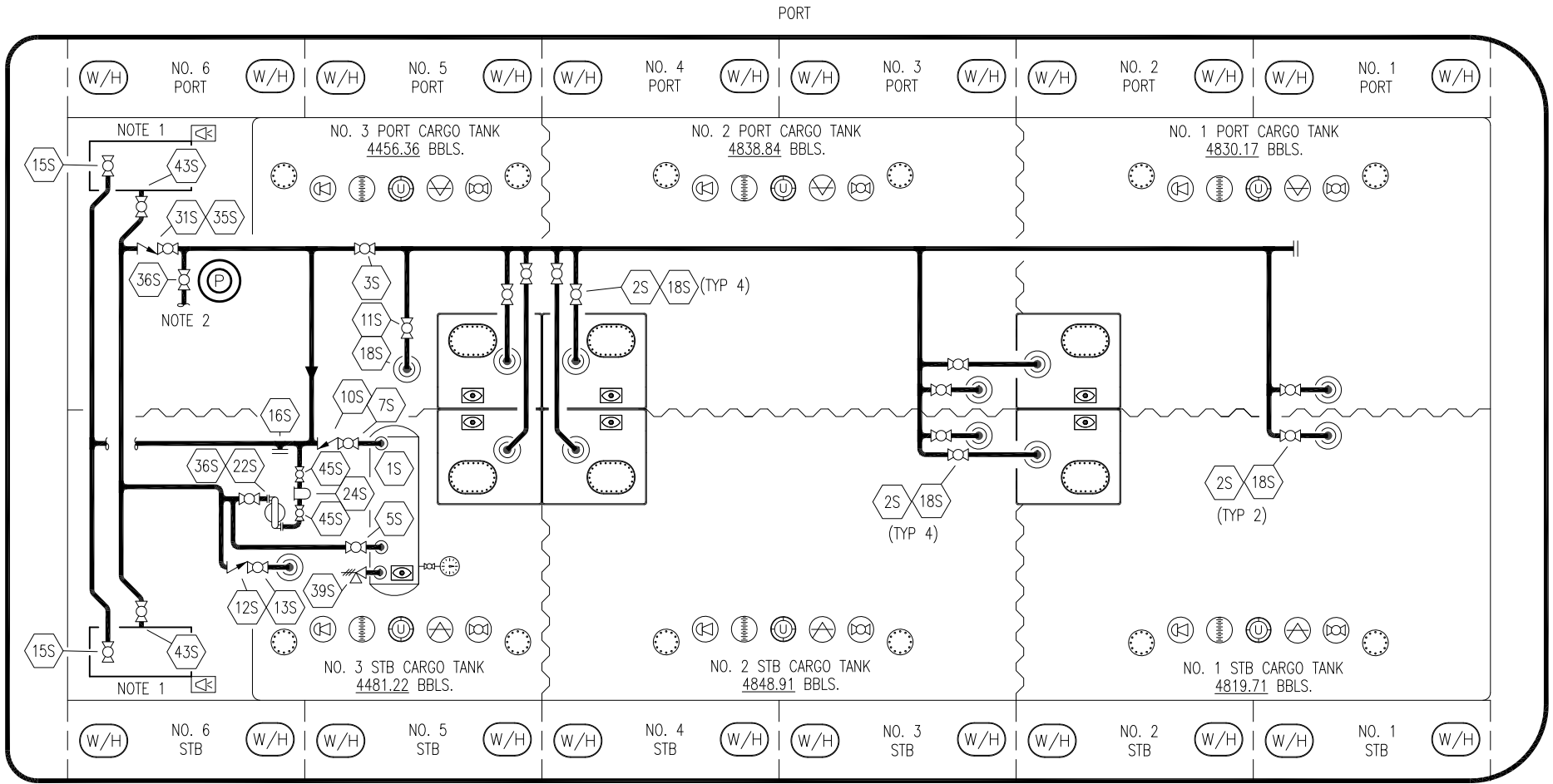
REV.	DATE	BY	CHK	APP	REVISION DESCRIPTION
1	06/02/20	MRV	DDA	DR	REVISED PER CLIENT COMMENTS
0	03/30/09	WK	RB	OF	APPROVED

TRINITY MARINE

**KIRBY INLAND MARINE**

**VAPOR  
PIPING FLOW DIAGRAM**

SCALE: NONE	<b>KIRBY 28071</b>	<b>REV. 1</b>
PAGE: 2 OF 3		




NO	DESCRIPTION	NO	DESCRIPTION
1S	SLOP TANK	18S	STRIPPING DROP
2S	VALVE CARGO TANK	22S	STRIPPING PUMP
3S	VALVE MAIN CARGO PIPING	24S	BASKET STRAINER
5S	SLOP TANK SUCTION VALVE	26S	STRIPPING HEADER BLOCK VALVE
7S	SLOP TANK VALVE	28S	CARGO HEADER STRIPPING VALVE
10S	SLOP TANK CHECK VALVE	31S	CHECK VALVE
11S	CARGO PIPELINE SUCTION VALVE	33S	PUMP WELL SUCTION
12S	RETURN TO CARGO TANK VALVE	35S	STRIPPING VALVE
13S	RETURN TO CARGO CHECK VALVE	36S	STRIPPING PUMP DISCHARGE
15S	DISCHARGE CARGO VALVE	39S	PRESSURE/ VACUUM VALVE
16S	REMOTE SUCTION CONNECTION	43S	DRIP PAN SUCTION VALVE

NO	DESCRIPTION
45S	STRIPPING PUMP SUCTION VALVE
—	ABOVE DECK PIPING

NOTE 1: CONTAINMENT P/S  
 NOTE 2: TO CARGO PUMP DISCHARGE  
 TRINITY MARINE

REV.	DATE	BY	CHK	APP	REVISION DESCRIPTION
1	06/02/20	MRV	DDA	DR	REVISED PER CLIENT COMMENTS
0	03/30/09	WK	RB	OF	APPROVED



**KIRBY INLAND MARINE**

**STRIPPING  
PIPING FLOW DIAGRAM**

**KIRBY 28071**

SCALE: NONE	REV. 1
PAGE: 3 OF 3	