


- |    |                      |     |                      |
|----|----------------------|-----|----------------------|
| NO | DESCRIPTION          | NO  | DESCRIPTION          |
| 1C | CARGO TANK VALVE     | 19C | CARGO HEADER         |
| 2C | LOAD VALVE           | 30C | CARGO PIPELINE       |
| 3C | MASTER SUCTION VALVE | 36C | PRESSURE GAUGE       |
| 4C | DISCHARGE VALVE      | 37C | CARGO DROP           |
| 5C | HEADER VALVE         | 1S  | SLOP TANK (3000 GAL) |
| 6C | SALVAGE VALVE        | —   | —                    |
| 9C | CARGO CHECK VALVE    | —   | —                    |
- ABOVE DECK PIPING  
 - - - BELOW DECK PIPING

NOTE 1: CONTAINMENT P/S

TRINITY MARINE

REV.	DATE	BY	CHK	APP	REVISION DESCRIPTION
1	02/05/20	MRV	DDA		REVISED PER CLIENT COMMENTS
0	04/06/09	WK	RB	OF	APPROVED



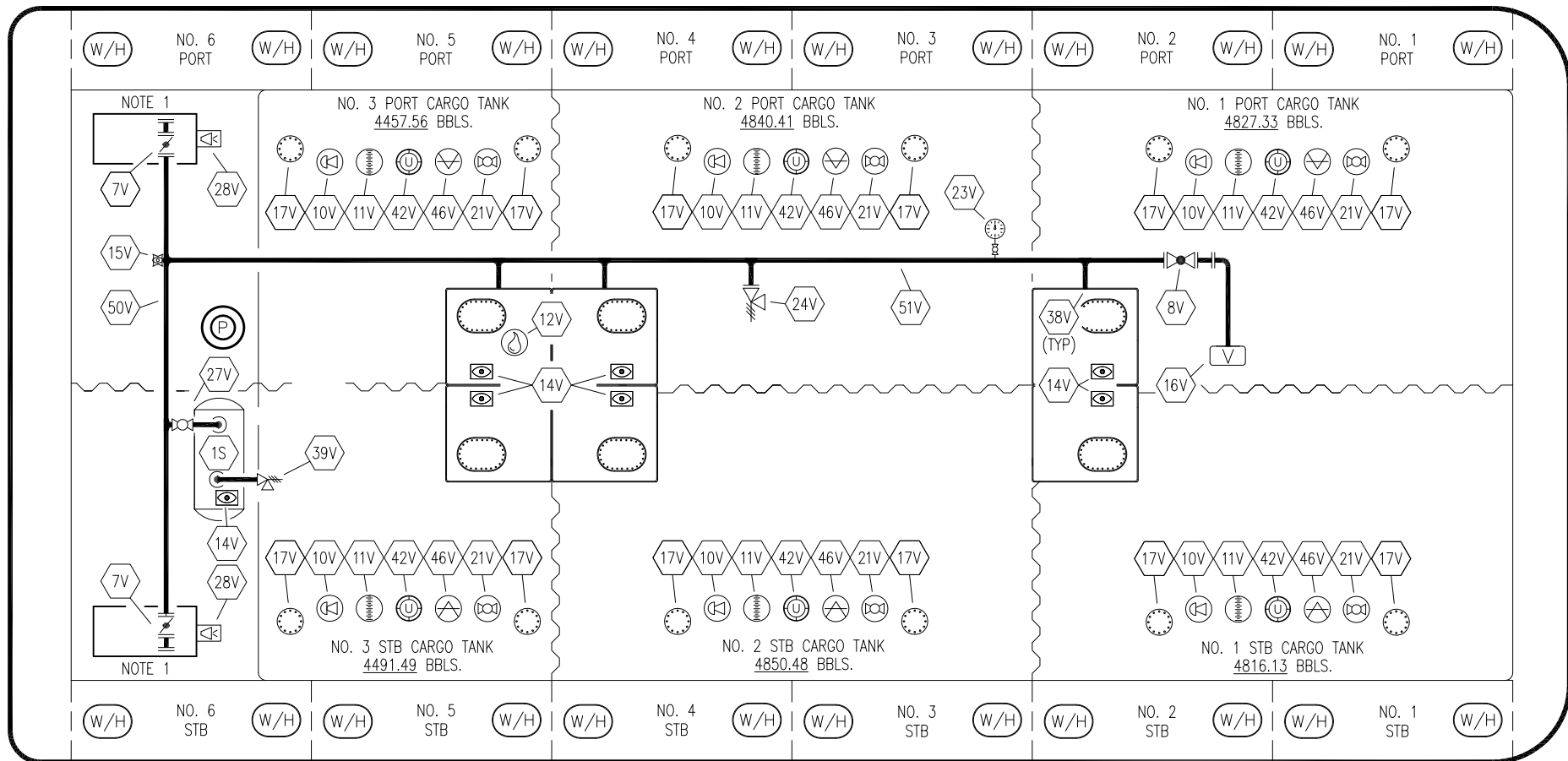
**KIRBY INLAND MARINE**

**CARGO**

**PIPING FLOW DIAGRAM**

**KIRBY 28068**

SCALE: NONE	REV. 1
PAGE: 1 OF 3	



NO	SIZE	DESCRIPTION	NO	SIZE	DESCRIPTION
1S		SLOP TANK (3000 GAL.)	23V	1/4"	PRESSURE/VAC GAUGE
7V	8"	HEADER VALVE	24V	6"	PRESSURE RELIEF VALVE
8V	8"	VENT STACK VALVE	27V	2"	SLOP TANK VENT VALVE
10V	8"	HIGH LEVEL/OVERFILL ALARM	28V		HIGH LEVEL DOCK ALARM
11V	8"	1 METER GAUGE STICK	38V		VAPOR PENETRATION
12V	2"	HERMETIC SAMPLE	39V		PRESSURE/VACUUM VALVE
14V	8"	SIGHT GLASS	42V	10"	ULLAGE
15V	2"	INSPECTION PORT	46V	2"	SOUNDING TUBE
16V	8"	VAPOR VENT STACK	50V		VAPOR HEADER
17V	19"	BUTTERWORTH	51V		VAPOR PIPELINE
19V		EMERGENCY SHUTDOWN			ABOVE DECK PIPING
21V		HERMETIC GAUGE			

NOTE 1: CONTAINMENT P/S

REV.	DATE	BY	CHK	APP	REVISION DESCRIPTION
1	02/05/20	MRV	DDA		REVISED PER CLIENT COMMENTS
0	04/06/09	WK	RB	OF	APPROVED

KIRBY INLAND MARINE 

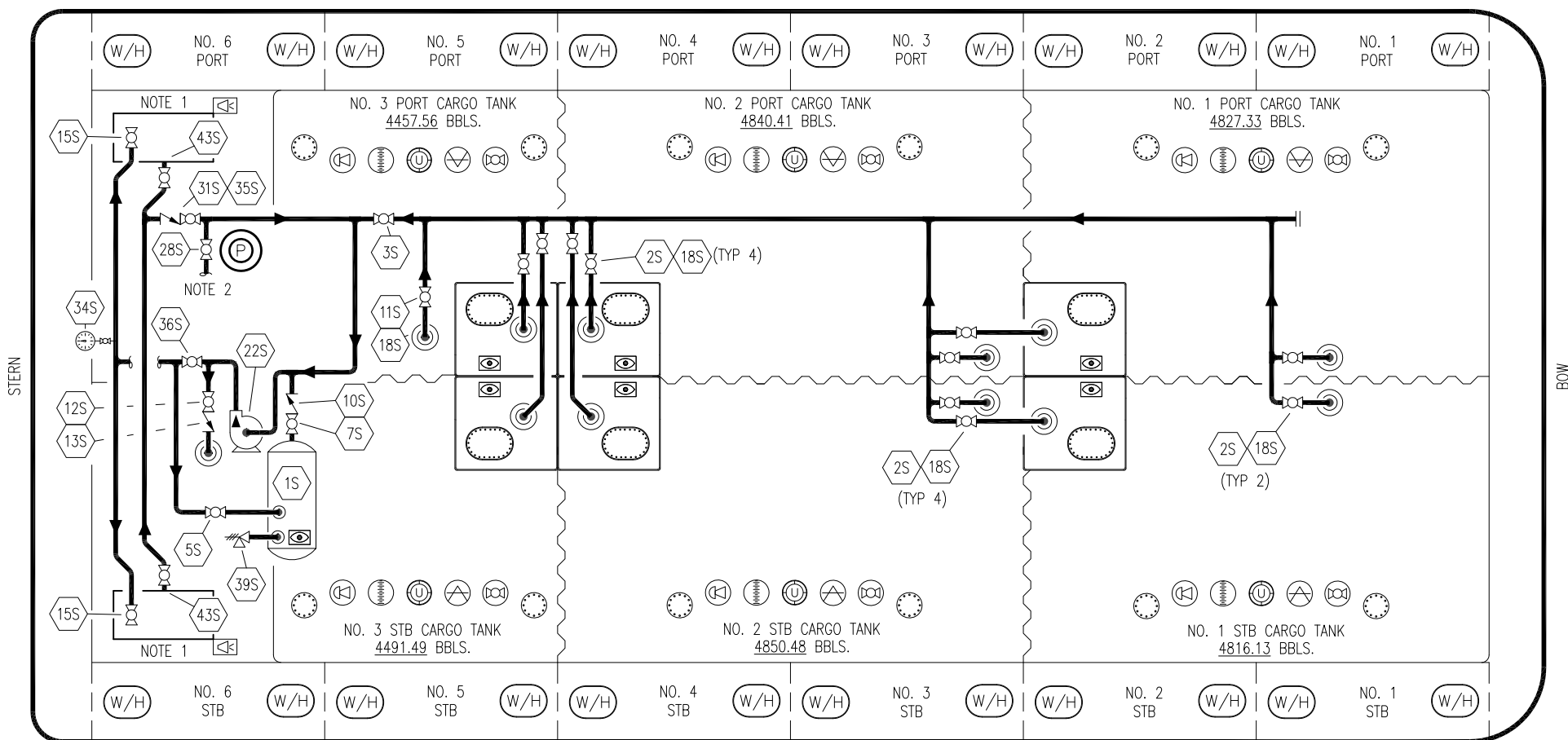
**VAPOR  
PIPING FLOW DIAGRAM**

SCALE: NONE  
PAGE: 2 OF 3

**KIRBY 28068**

REV. **1**

TRINITY MARINE




- |     |                              |     |                              |
|-----|------------------------------|-----|------------------------------|
| NO  | DESCRIPTION                  | NO  | DESCRIPTION                  |
| 1S  | SLOP TANK                    | 22S | STRIPPING PUMP               |
| 2S  | VALVE CARGO TANK             | 26S | STRIPPING HEADER BLOCK VALVE |
| 3S  | VALVE MAIN CARGO PIPING      | 28S | CARGO HEADER STRIPPING VALVE |
| 5S  | SLOP TANK SUCTION VALVE      | 31S | CHECK VALVE                  |
| 7S  | SLOP TANK VALVE              | 35S | STRIPPING VALVE              |
| 10S | SLOP TANK CHECK VALVE        | 34S | PRESSURE GAUGE               |
| 11S | CARGO PIPELINE SUCTION VALVE | 36S | STRIPPING PUMP DISCHARGE     |
| 12S | RETURN TO CARGO TANK VALVE   | 39S | PRESSURE/ VACUUM VALVE       |
| 13S | RETURN TO CARGO CHECK VALVE  | 43S | DRIP PAN SUCTION VALVE       |
| 15S | DISCHARGE CARGO VALVE        | —   | ABOVE DECK PIPING            |
| 18S | STRIPPING DROP               |     |                              |

NOTE 1: CONTAINMENT P/S  
 NOTE 2: TO CARGO PUMP DISCHARGE

TRINITY MARINE

REV.	DATE	BY	CHK	APP	REVISION DESCRIPTION
1	02/05/20	MRV	DDA		REVISED PER CLIENT COMMENTS
0	04/06/09	WK	RB	OF	APPROVED



**KIRBY INLAND MARINE**

**STRIPPING**

**PIPING FLOW DIAGRAM**

SCALE: NONE	<b>KIRBY 28068</b>	PAGE: 3 OF 3	<b>REV. 1</b>
-------------	--------------------	--------------	---------------