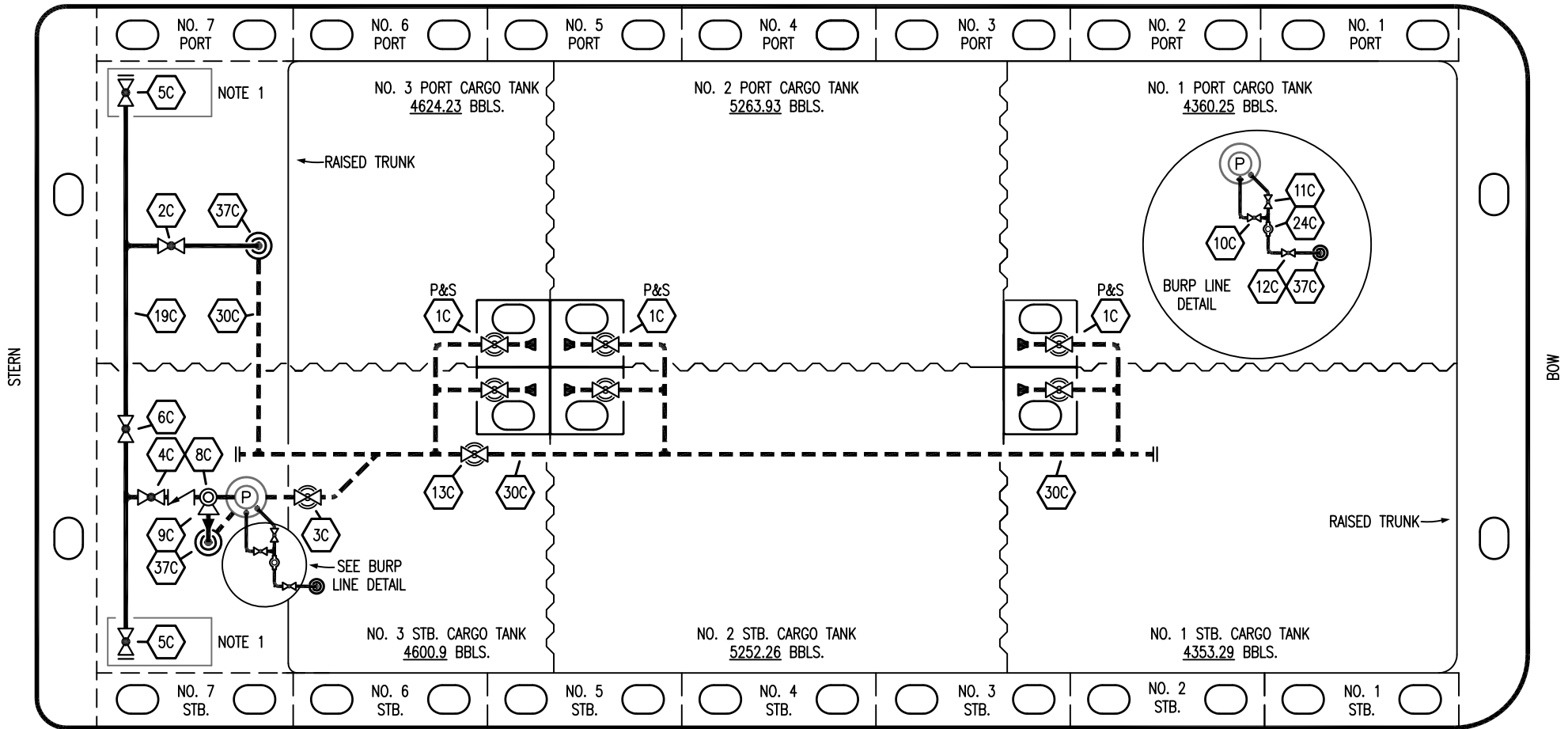


PORT



STERN

BOW

STARBOARD

NO	DESCRIPTION	NO	DESCRIPTION
1C	CARGO TANK VALVE	12C	1" BURP VALVE RETURN TO CARGO TANK
2C	LOAD VALVE	13C	CARGO PIPING BLOCK VALVE
3C	MASTER SUCTION VALVE	19C	CARGO HEADER
4C	DISCHARGE VALVE	24C	1" PIPE FLOW INDICATOR
5C	HEADER VALVE	30C	CARGO PIPELINE
6C	SALVAGE VALVE	37C	CARGO DROP
8C	RELIEF VALVE	—	— ABOVE DECK PIPING
9C	CHECK VALVE	- - -	- - - BELOW DECK PIPING
10C	1" BURP VALVE		
11C	1" BLEED OFF VALVE		

NOTE 1: CONTAINMENT P/S

WEST GULF MARINE -- EX: N/A

REV.	DATE	BY	CHK	APP	REVISION DESCRIPTION
2	09/16/23	MRV	DDA	DL	REVISED PER CLIENT COMMENTS
1	07/25/14	DDA	DDA		REVISED PER CLIENT COMMENTS
0	12/07/09	RB	RB	OF	APPROVED

KIRBY INLAND MARINE

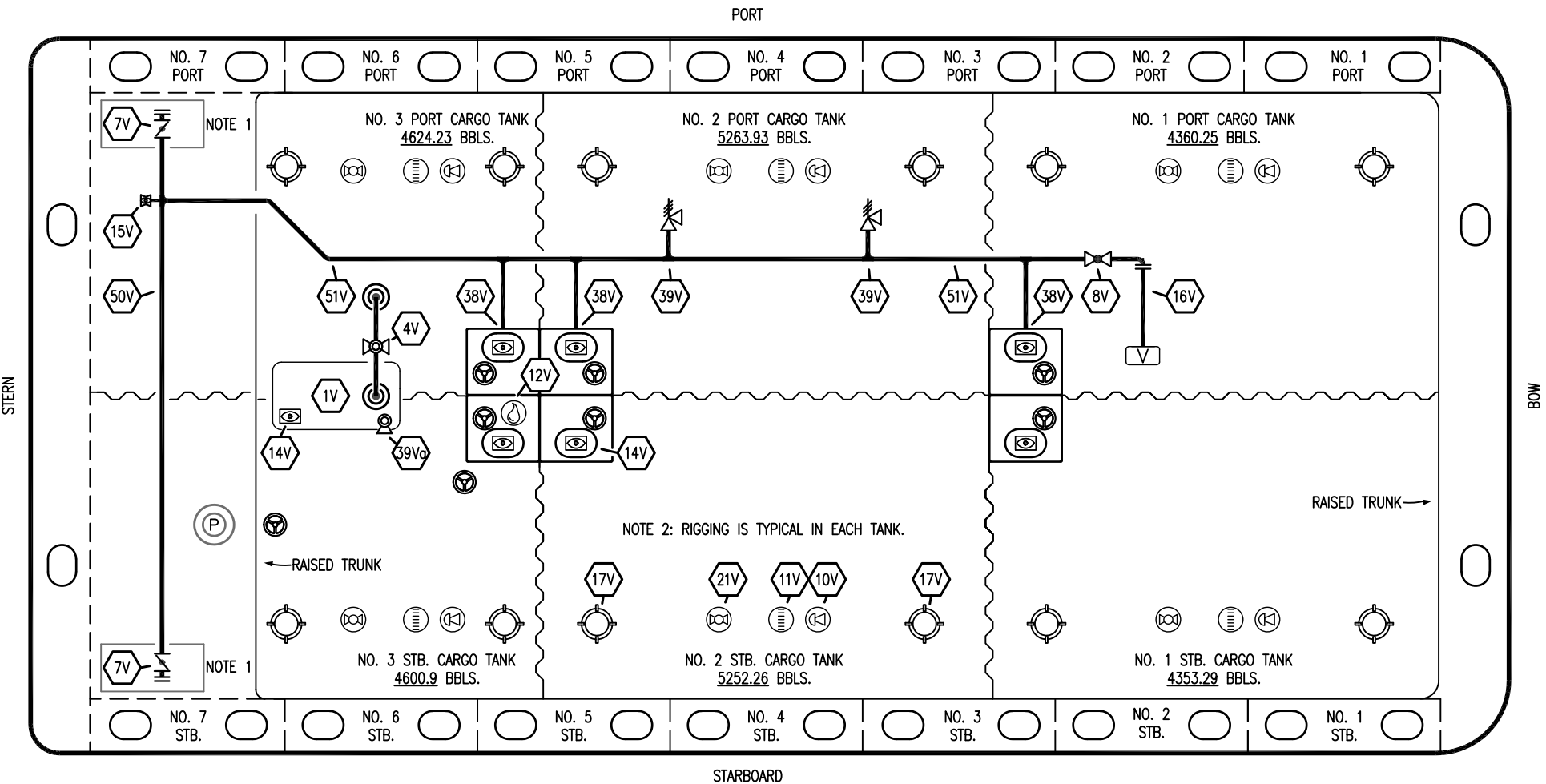
CARGO

PIPING FLOW DIAGRAM

KIRBY 28058

REV. 2

SCALE: NONE
PAGE: 1 OF 3



NO	DESCRIPTION	NO	DESCRIPTION
1V	3000 GAL. SLOP TANK	16V	8" VAPOR VENT STACK
3V	2" SLOP TANK VENT PIPING	17V	20" BUTTERWORTH
4V	2" SLOP TANK SPEC VENT VALVE	21V	2" HERMETIC GAUGE
7V	8" HEADER VALVE	38V	8" VAPOR PENETRATION
8V	8" VENT STACK VALVE	39V	6" PRESS/VAC RELIEF VALVE
11V	8" 1-METER GAUGE STICK	39Va	4" PRESS/VAC RELIEF VALVE
10V	8" HIGH LEVEL/OVERFILL ALARM	50V	8" VAPOR HEADER
12V	2" HERMETIC SAMPLE	51V	8" VAPOR PIPELINE
14V	8" SIGHT GLASS	—	ABOVE DECK PIPING
15V	2" INSPECTION PORT		

NOTE 1: CONTAINMENT P/S

NOTE 2: RIGGING IS TYPICAL IN EACH TANK.

REV.	DATE	BY	CHK	APP	REVISION DESCRIPTION
2	09/16/23	MRV	DDA	DL	REVISED PER CLIENT COMMENTS
1	07/25/14	DDA	DDA		REVISED PER CLIENT COMMENTS
0	12/07/09	RB	RB	OF	APPROVED

KIRBY INLAND MARINE

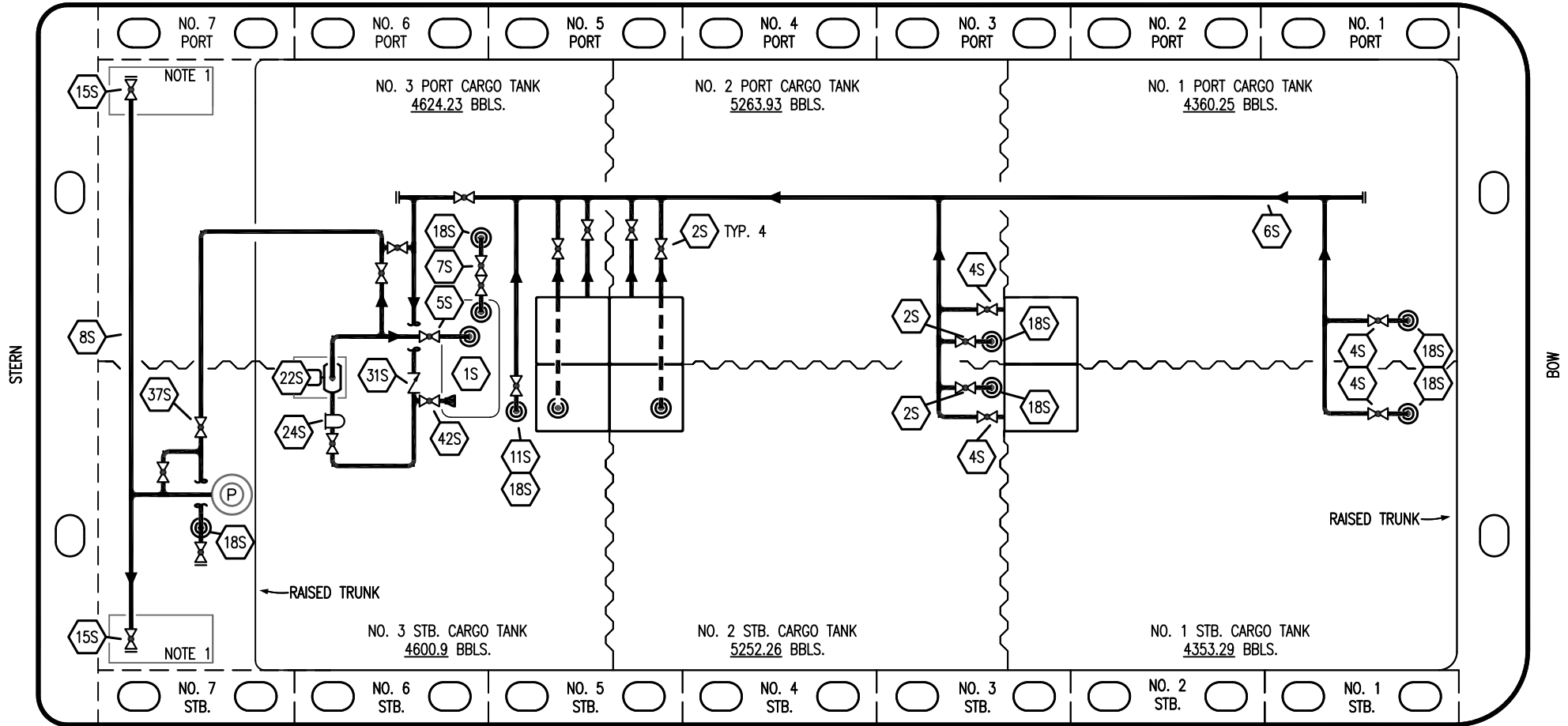
**VAPOR
PIPING FLOW DIAGRAM**

KIRBY 28058

REV. 2

SCALE: NONE
PAGE: 2 OF 3

PORT



NO	DESCRIPTION	NO	DESCRIPTION
1S	SLOP TANK	18S	STRIPPING DROP
2S	CARGO SUMP SUCTION VALVE	22S	STRIPPING PUMP
4S	CARGO TANK SUCTION VALVE	24S	BASKET STRAINER
5S	SLOP TANK SUCTION VALVE	31S	CHECK VALVE
6S	SUCTION HEADER PIPING	37S	BLOCK VALVE
7S	VENT VALVE TO CARGO TANK 3	42S	SLOP TANK FILL VALVE
8S	DISCHARGE HEADER PIPING	—	— ABOVE DECK PIPING
11S	LOWER CARGO PIPELINE SUCTION VALVE	---	--- BELOW DECK PIPING
15S	HEADER DISCHARGE VALVE		

STARBOARD

NOTE 1: CONTAINMENT P/S

NOTE 2: 28S & 32S CONNECT TO 8" CARGO PUMP DISCHARGE PIPING.

WEST GULF MARINE -- EX: N/A

REV.	DATE	BY	CHK	APP	REVISION DESCRIPTION
2	09/16/23	MRV	DDA	DL	REVISED PER CLIENT COMMENTS
1	07/25/14	DDA	DDA		REVISED PER CLIENT COMMENTS
0	12/07/09	RB	RB	OF	APPROVED

KIRBY INLAND MARINE 

**STRIPPING
PIPING FLOW DIAGRAM**

SCALE: NONE
PAGE: 3 OF 3

KIRBY 28058

REV. **2**