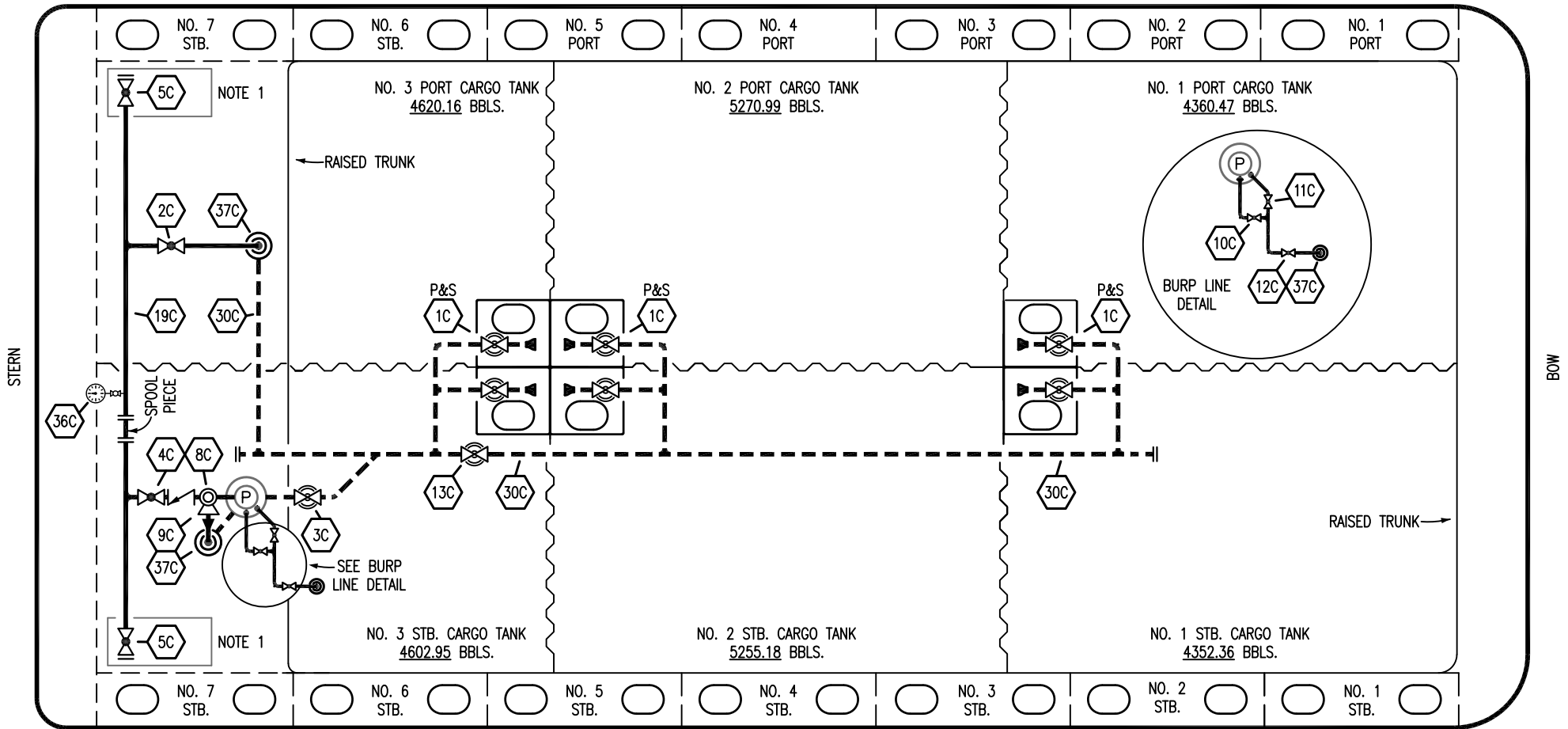


PORT



STERN

BOW

STARBOARD

NO	DESCRIPTION	NO	DESCRIPTION
1C	CARGO TANK VALVE	12C	1" BURP VALVE RETURN TO CARGO TANK
2C	LOAD VALVE	13C	CARGO PIPING BLOCK VALVE
3C	MASTER SUCTION VALVE	19C	CARGO HEADER
4C	DISCHARGE VALVE	30C	CARGO PIPELINE
5C	HEADER VALVE	36C	PRESSURE GAUGE
8C	RELIEF VALVE	37C	CARGO DROP
9C	CHECK VALVE	—	— ABOVE DECK PIPING
10C	1" BURP VALVE	---	--- BELOW DECK PIPING
11C	1" BLEED OFF VALVE		

NOTE 1: CONTAINMENT P/S

WEST GULF MARINE -- EX: N/A

REV.	DATE	BY	CHK	APP	REVISION DESCRIPTION
2	12/19/22	MRV	DDA	FIX	REVISED PER CLIENT COMMENTS
1	11/29/17	WFB	DDA		REMOVED 6C SALVAGE VALVE
0	12/07/09	RB	RB	OF	APPROVED

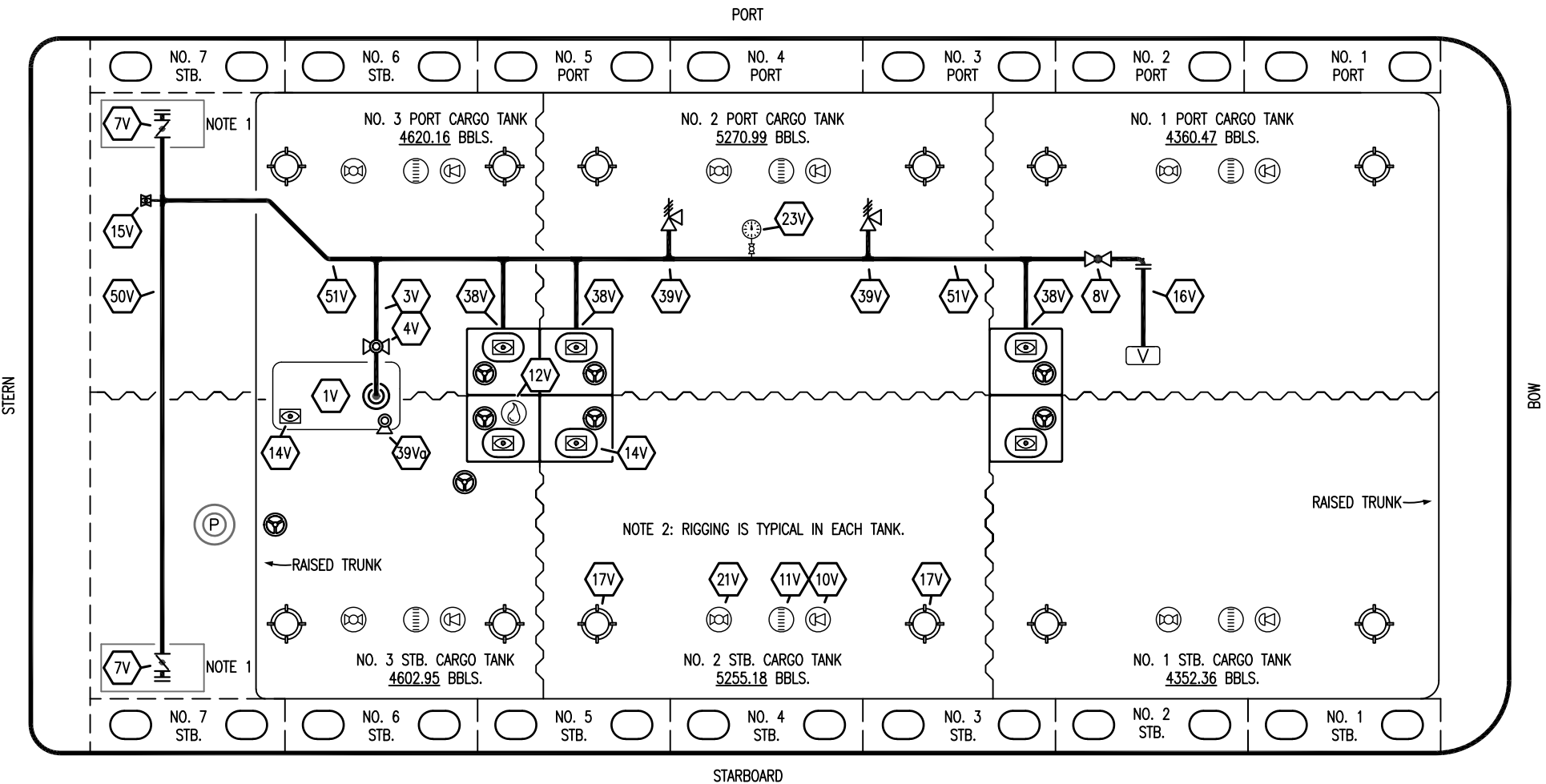
KIRBY INLAND MARINE 

**CARGO
PIPING FLOW DIAGRAM**

SCALE: NONE
PAGE: 1 OF 3

KIRBY 28056


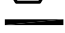
REV. **2**



NOTE 2: RIGGING IS TYPICAL IN EACH TANK.

NOTE 1

NOTE 1


NO	DESCRIPTION	NO	DESCRIPTION
1V	3000 GAL. SLOP TANK	16V	8" VAPOR VENT STACK
3V	2" SLOP TANK VENT PIPING	17V	20" BUTTERWORTH
4V	2" SLOP TANK SPEC VENT VALVE	21V	2" HERMETIC GAUGE
7V	8" HEADER VALVE	23V	PRESSURE GAUGE
8V	8" VENT STACK VALVE	38V	8" VAPOR PENETRATION 
11V	8" 1-METER GAUGE STICK	39V	6" PRESS/VAC RELIEF VALVE
10V	8" HIGH LEVEL/OVERFILL ALARM	39Vg	4" PRESS/VAC RELIEF VALVE
12V	2" HERMETIC SAMPLE	50V	8" VAPOR HEADER
14V	8" SIGHT GLASS	51V	8" VAPOR PIPELINE
15V	2" INSPECTION PORT		ABOVE DECK PIPING

NOTE 1: CONTAINMENT P/S

NOTE 2: RIGGING IS TYPICAL IN EACH TANK.

WEST GULF MARINE - EX: N/A

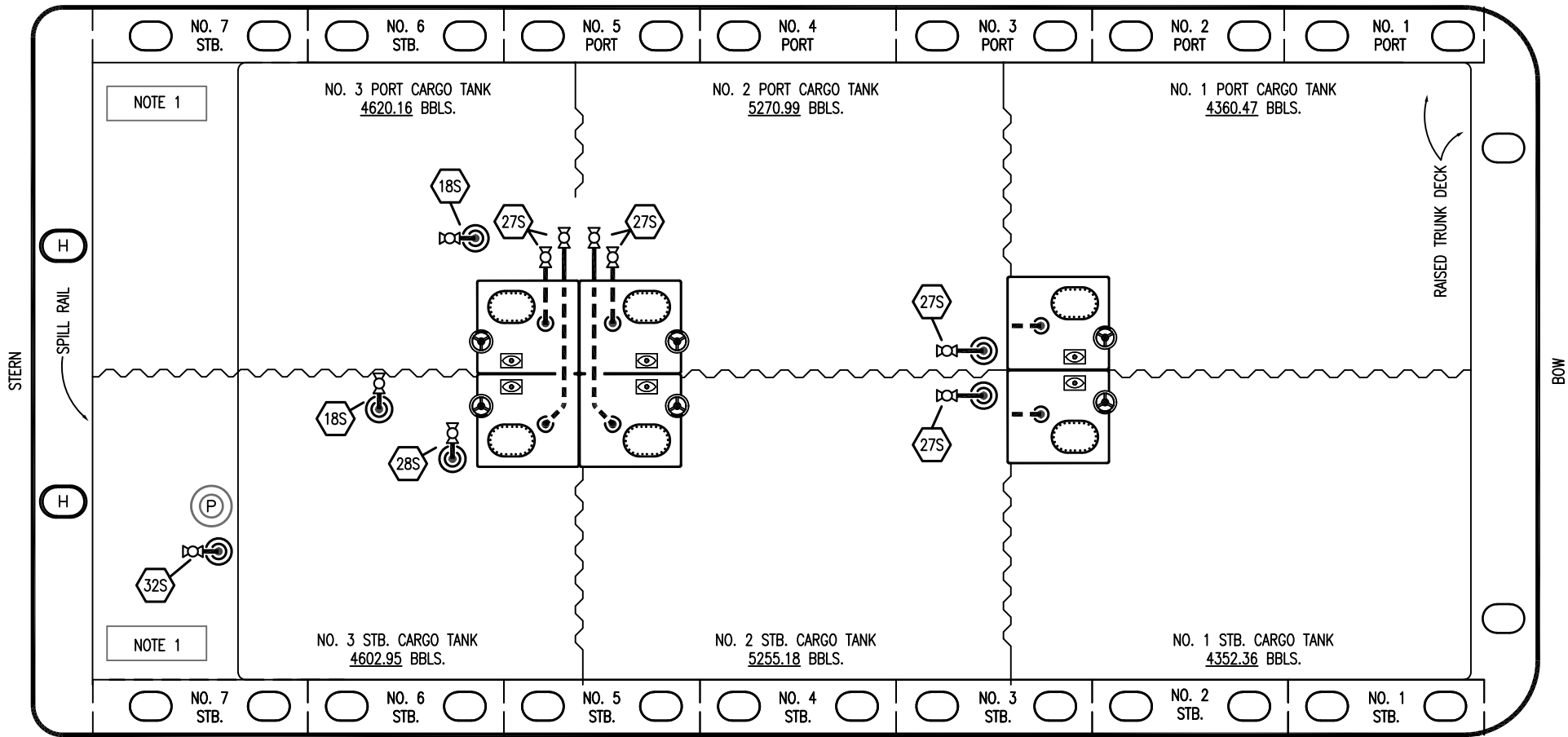
1	12/19/22	MRV	DDA	FIX	REVISED PER CLIENT COMMENTS
0	12/07/09	RB	RB	OF	APPROVED
REV.	DATE	BY	CHK	APP	REVISION DESCRIPTION

KIRBY INLAND MARINE 

VAPOR
PIPING FLOW DIAGRAM

SCALE: NONE	KIRBY 28056	PAGE: 2 OF 3
		REV. 1

PORT



STARBOARD

- | NO | DESCRIPTION |
|-------------------------|------------------------|
| 18S | STRIPPING DROP |
| 27S | SUMP SUCTION |
| 28S | STRIPPING PIPELINE |
| 32S | PUMP WELL PRIMER VALVE |
| 33S | PUMP WELL SUCTION |
| 40S | CARGO TANK SUCTION |
| — ABOVE DECK PIPING | |
| - - - BELOW DECK PIPING | |

NOTE 1: CONTAINMENT P/S

WEST GULF MARINE – EX: N/A

REV.	DATE	BY	CHK	APP	REVISION DESCRIPTION
1	12/19/22	MRV	DDA	FIX	REVISED PER CLIENT COMMENTS
0	12/07/09	RB	RB	OF	APPROVED

KIRBY INLAND MARINE

STRIPPING
PIPING FLOW DIAGRAM

SCALE: NONE	KIRBY 28056
PAGE: 3 OF 3	REV. 1