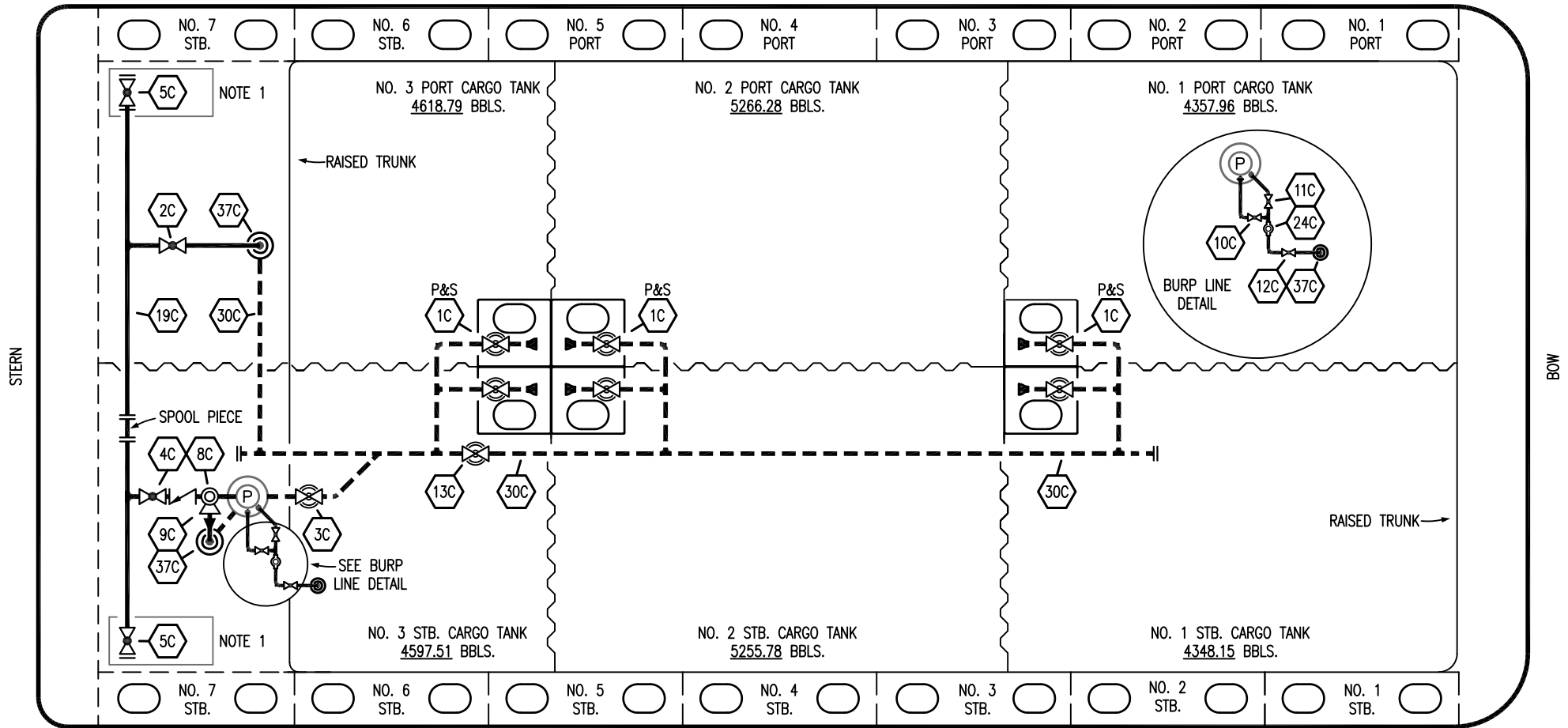


PORT



STARBOARD

NO	DESCRIPTION	NO	DESCRIPTION
1C	CARGO TANK VALVE	12C	1" BURP VALVE RETURN TO CARGO TANK
2C	LOAD VALVE	13C	CARGO PIPING BLOCK VALVE
3C	MASTER SUCTION VALVE	19C	CARGO HEADER
4C	DISCHARGE VALVE	24C	1" PIPE FLOW INDICATOR
5C	HEADER VALVE	30C	CARGO PIPELINE
8C	RELIEF VALVE	37C	CARGO DROP
9C	CHECK VALVE	—	— ABOVE DECK PIPING
10C	1" BURP VALVE	---	--- BELOW DECK PIPING
11C	1" BLEED OFF VALVE		

NOTE 1: CONTAINMENT P/S

WEST GULF MARINE -- EX: N/A

REV.	DATE	BY	CHK	APP	REVISION DESCRIPTION
2	01/17/23	MRV	DDA	DL	REVISED PER CLIENT COMMENTS
1	10/25/17	WFB	DDA		REMOVED 6C SALVAGE VALVE
0	12/07/09	RB	RB	OF	APPROVED

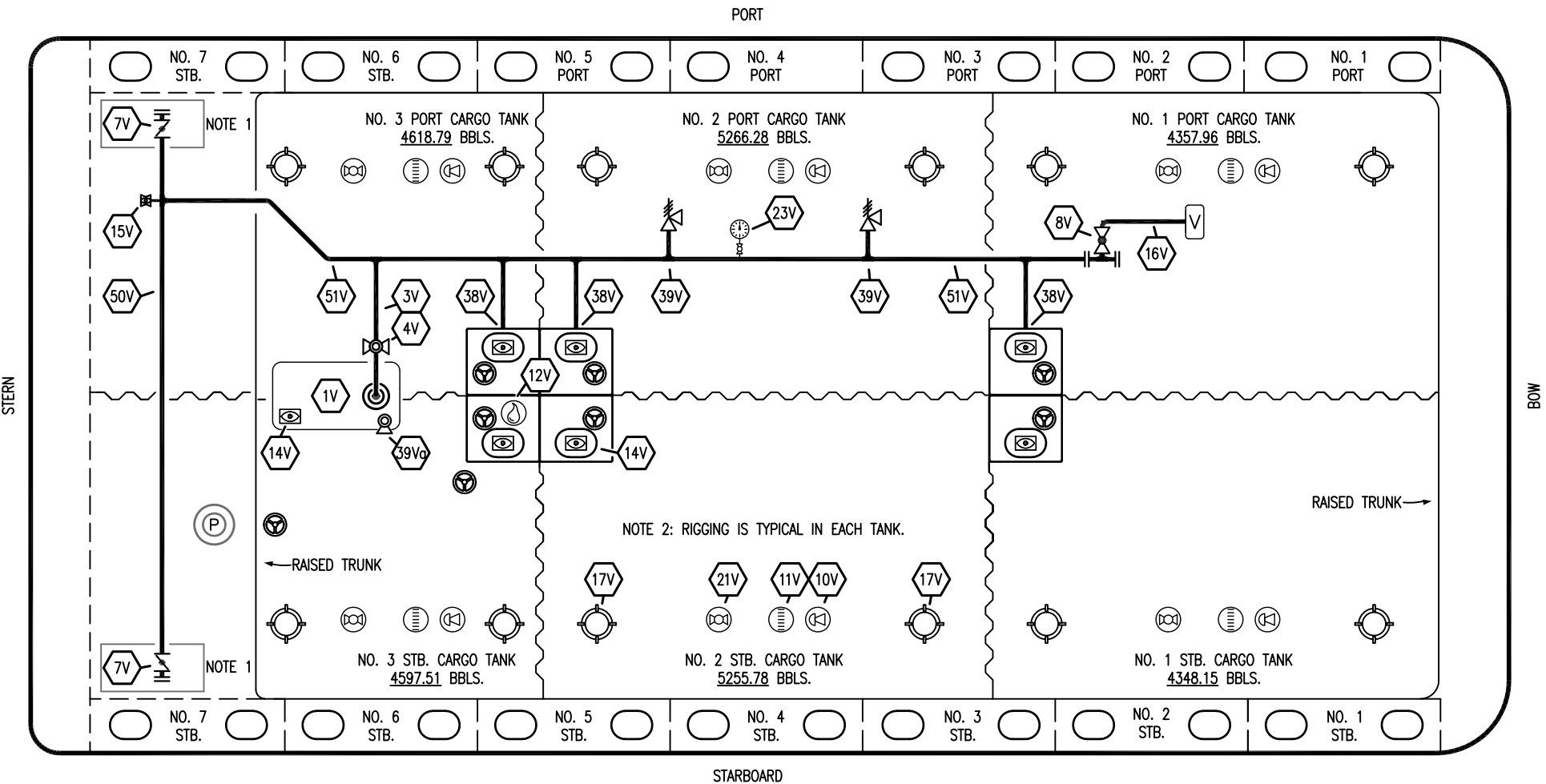
**KIRBY INLAND MARINE**

**CARGO  
PIPING FLOW DIAGRAM**

SCALE: NONE  
PAGE: 1 OF 3

**KIRBY 28055**

REV. **2**



NO	DESCRIPTION	NO	DESCRIPTION
1V	3000 GAL. SLOP TANK	16V	8" VAPOR VENT STACK
3V	2" SLOP TANK VENT PIPING	17V	20" BUTTERWORTH
4V	2" SLOP TANK SPEC VENT VALVE	21V	2" HERMETIC GAUGE
7V	8" HEADER VALVE	23V	PRESSURE GAUGE
8V	8" VENT STACK VALVE	38V	8" VAPOR PENETRATION
11V	8" 1-METER GAUGE STICK	39V	6" PRESS/VAC RELIEF VALVE
10V	8" HIGH LEVEL/OVERFILL ALARM	39Vg	4" PRESS/VAC RELIEF VALVE
12V	2" HERMETIC SAMPLE	50V	8" VAPOR HEADER
14V	8" SIGHT GLASS	51V	8" VAPOR PIPELINE
15V	2" INSPECTION PORT	—	ABOVE DECK PIPING

NOTE 1: CONTAINMENT P/S

NOTE 2: RIGGING IS TYPICAL IN EACH TANK.

WEST GULF MARINE – EX: N/A

REV.	DATE	BY	CHK	APP	REVISION DESCRIPTION
1	01/17/23	MRV	DDA	DL	REVISED PER CLIENT COMMENTS
0	12/07/09	RB	RB	OF	APPROVED

**KIRBY INLAND MARINE**

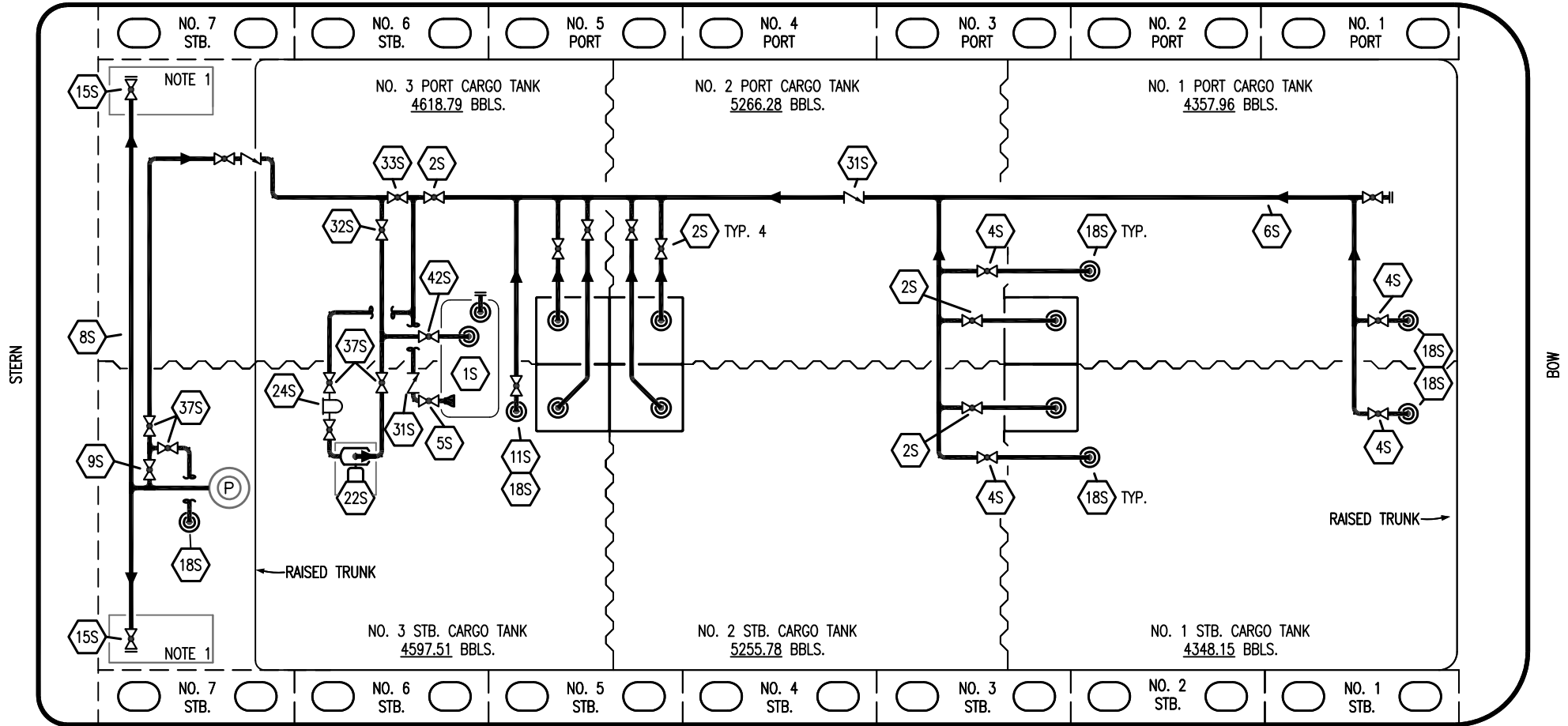
**VAPOR  
PIPING FLOW DIAGRAM**

SCALE: NONE  
PAGE: 2 OF 3

**KIRBY 28055**

REV. **1**

PORT



STARBOARD

NO	DESCRIPTION	NO	DESCRIPTION
1S	SLOP TANK	18S	STRIPPING DROP (☉)
2S	CARGO SUMP SUCTION VALVE	22S	STRIPPING PUMP
4S	CARGO TANK SUCTION VALVE	24S	BASKET STRAINER
5S	SLOP TANK SUCTION VALVE	31S	CHECK VALVE
6S	SUCTION HEADER PIPING	32S	PUMP WELL PRIMER VALVE
8S	DISCHARGE HEADER PIPING	33S	PUMP WELL SUCTION VALVE
9S	BYPASS VALVE	37S	BLOCK VALVE
11S	LOWER CARGO PIPELINE SUCTION VALVE	42S	SLOP TANK FILL VALVE
16S	REMOTE SUCTION CONNECTION	—	—
17S	FORWARD CARGO TANK ISOLATION	—	—

NOTE 1: CONTAINMENT P/S

NOTE 2: 28S & 32S CONNECT TO 8" CARGO PUMP DISCHARGE PIPING.

WEST GULF MARINE -- EX: N/A

REV.	DATE	BY	CHK	APP	REVISION DESCRIPTION
1	01/17/23	MRV	DDA	DL	REVISED PER CLIENT COMMENTS
0	12/07/09	RB	RB	OF	APPROVED

**KIRBY INLAND MARINE** 

**STRIPPING  
PIPING FLOW DIAGRAM**

SCALE: NONE  
PAGE: 3 OF 3

**KIRBY 28055** REV. **1**