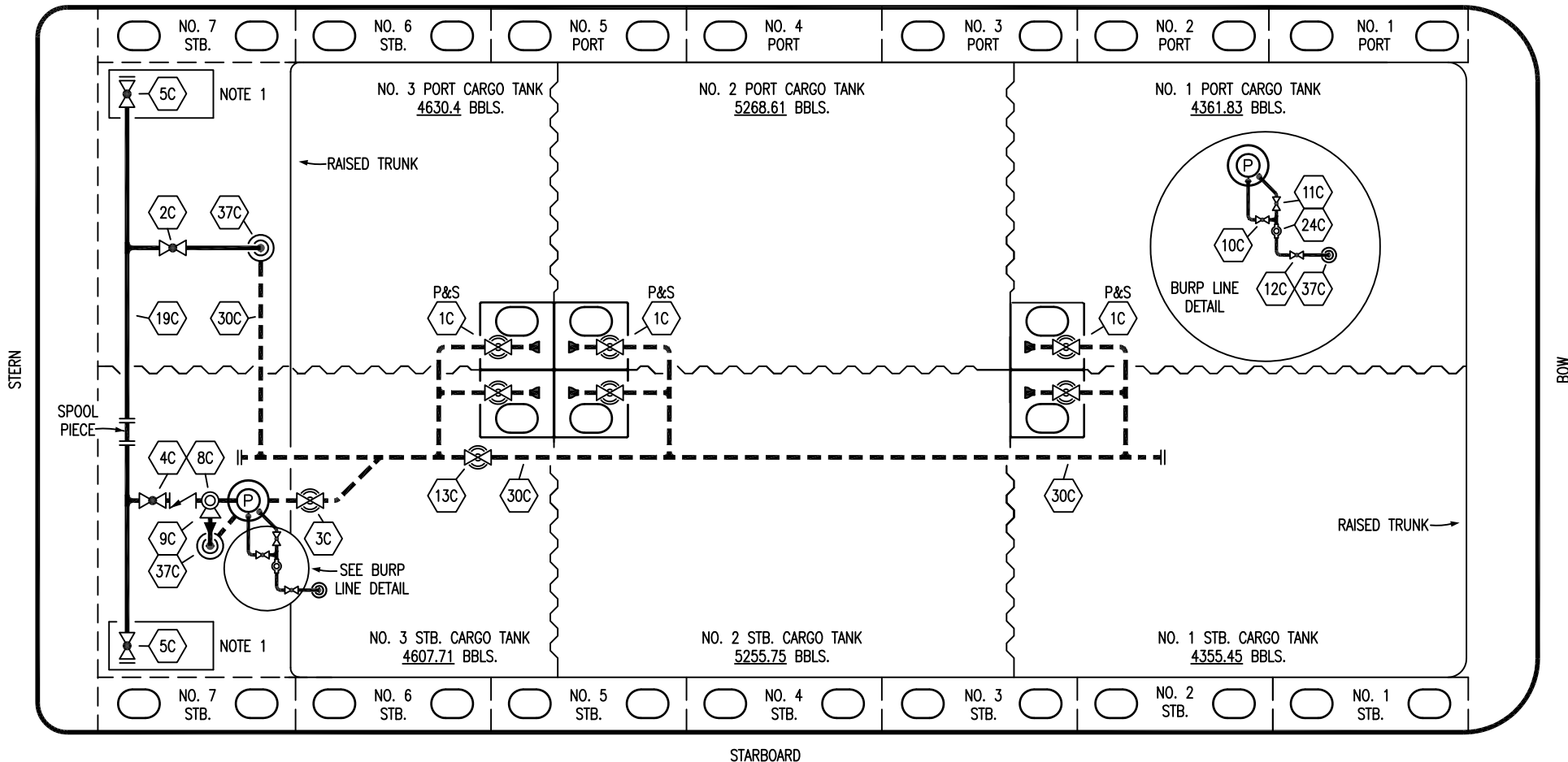


PORT



STARBOARD

NO	DESCRIPTION	NO	DESCRIPTION
1C	CARGO TANK VALVE	12C	1" BURP VALVE RETURN TO CARGO TANK
2C	LOAD VALVE	13C	CARGO PIPING BLOCK VALVE
3C	MASTER SUCTION VALVE	19C	CARGO HEADER
4C	DISCHARGE VALVE	24C	1" PIPE FLOW INDICATOR
5C	HEADER VALVE	30C	CARGO PIPELINE
8C	RELIEF VALVE	37C	CARGO DROP
9C	CHECK VALVE	—	— ABOVE DECK PIPING
10C	1" BURP VALVE	---	--- BELOW DECK PIPING
11C	1" BLEED OFF VALVE		

NOTE 1: CONTAINMENT P/S

WEST GULF MARINE - EX: N/A

REV.	DATE	BY	CHK	APP	REVISION DESCRIPTION
1	12/13/17	WFB	DDA		REMOVED 6C SALVAGE VALVE
0	12/07/09	RB	RB	OF	APPROVED

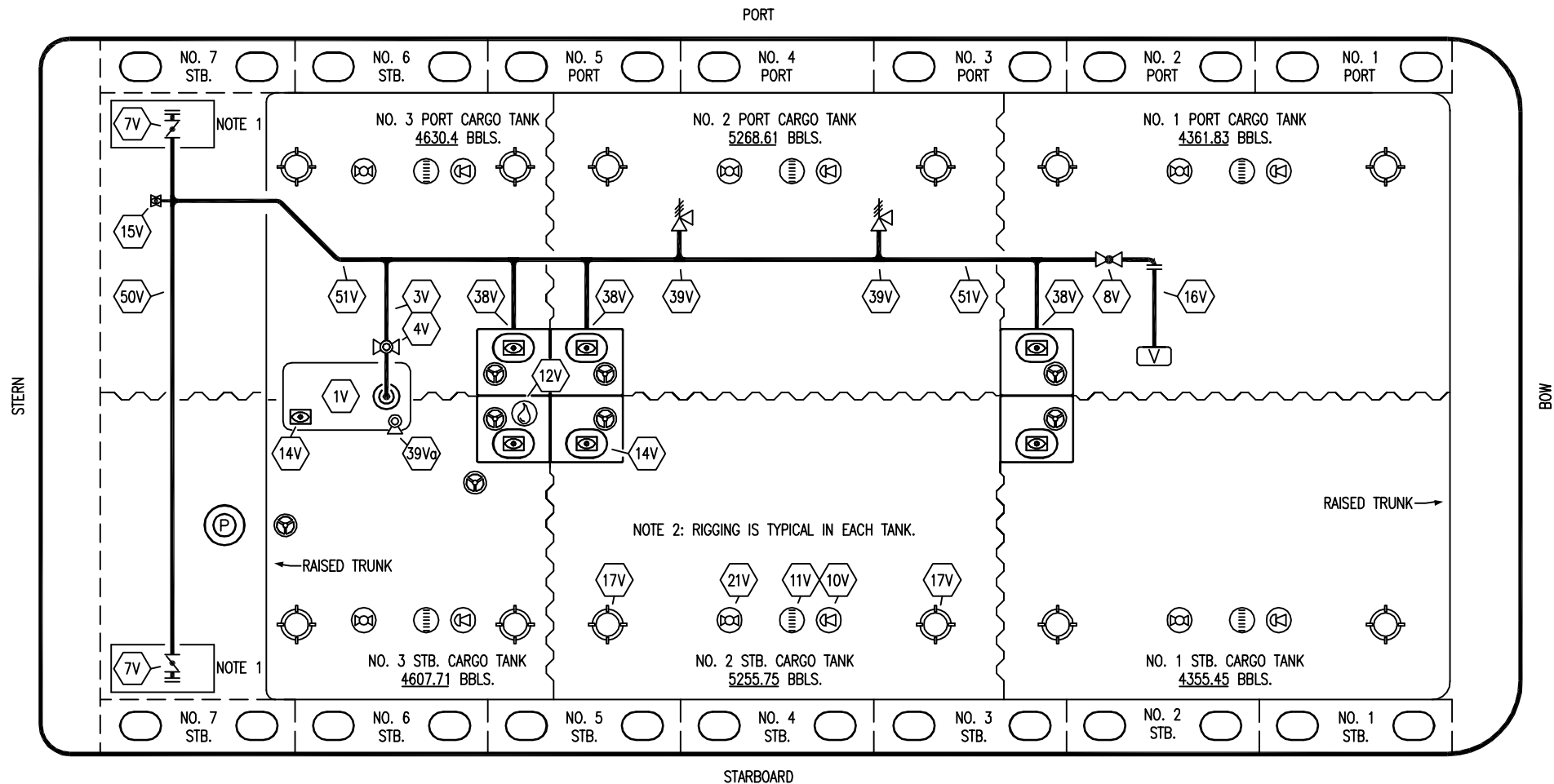
KIRBY INLAND MARINE 

**CARGO
PIPING FLOW DIAGRAM**

SCALE: NONE
PAGE: 1 OF 3

KIRBY 28054

REV. **1**



NO	DESCRIPTION	NO	DESCRIPTION
1V	3000 GAL. SLOP TANK	16V	8" VAPOR VENT STACK
3V	2" SLOP TANK VENT PIPING	17V	20" BUTTERWORTH
4V	2" SLOP TANK SPEC VENT VALVE	21V	2" HERMETIC GAUGE
7V	8" HEADER VALVE	38V	8" VAPOR PENETRATION (⊙)
8V	8" VENT STACK VALVE	39V	6" PRESS/VAC RELIEF VALVE
11V	8" 1-METER GAUGE STICK	39Vq	4" PRESS/VAC RELIEF VALVE
10V	8" HIGH LEVEL/OVERFILL ALARM	50V	8" VAPOR HEADER
12V	2" HERMETIC SAMPLE	51V	8" VAPOR PIPELINE
14V	8" SIGHT GLASS	—	ABOVE DECK PIPING
15V	2" INSPECTION PORT		

NOTE 1: CONTAINMENT P/S

NOTE 2: RIGGING IS TYPICAL IN EACH TANK.

WEST GULF MARINE - EX: N/A

REV.	DATE	BY	CHK	APP	REVISION DESCRIPTION
0	12/07/09	RB	RB	OF	APPROVED

KIRBY INLAND MARINE

VAPOR
PIPING FLOW DIAGRAM

KIRBY 28054

SCALE: NONE
PAGE: 2 OF 3

REV. 0

