

NO	DESCRIPTION	NO	DESCRIPTION
1C	CARGO TANK VALVE	12C	BURP VALVE RETURN TO CARGO TANK
2C	LOAD VALVE	13C	CARGO PIPING BLOCK VALVE
3C	MASTER SUCTION VALVE	19C	CARGO HEADER
4C	DISCHARGE VALVE	24C	PIPE FLOW INDICATOR
5C	HEADER VALVE	30C	CARGO PIPELINE
8C	RELIEF VALVE	37C	CARGO DROP
9C	CHECK VALVE	—	— ABOVE DECK PIPING
10C	BURP VALVE	---	--- BELOW DECK PIPING
11C	BLEED OFF VALVE		

NOTE 1: CONTAINMENT P/S

WEST GULF MARINE -- EX: N/A

REV.	DATE	BY	CHK	APP	REVISION DESCRIPTION
2	09/13/22	MRV	DDA	FIX	REVISED PER CLIENT COMMENTS
1	05/19/17	WFB	DDA		REVISED PER CLIENT COMMENTS
0	11/30/09	RB	RB	OF	APPROVED

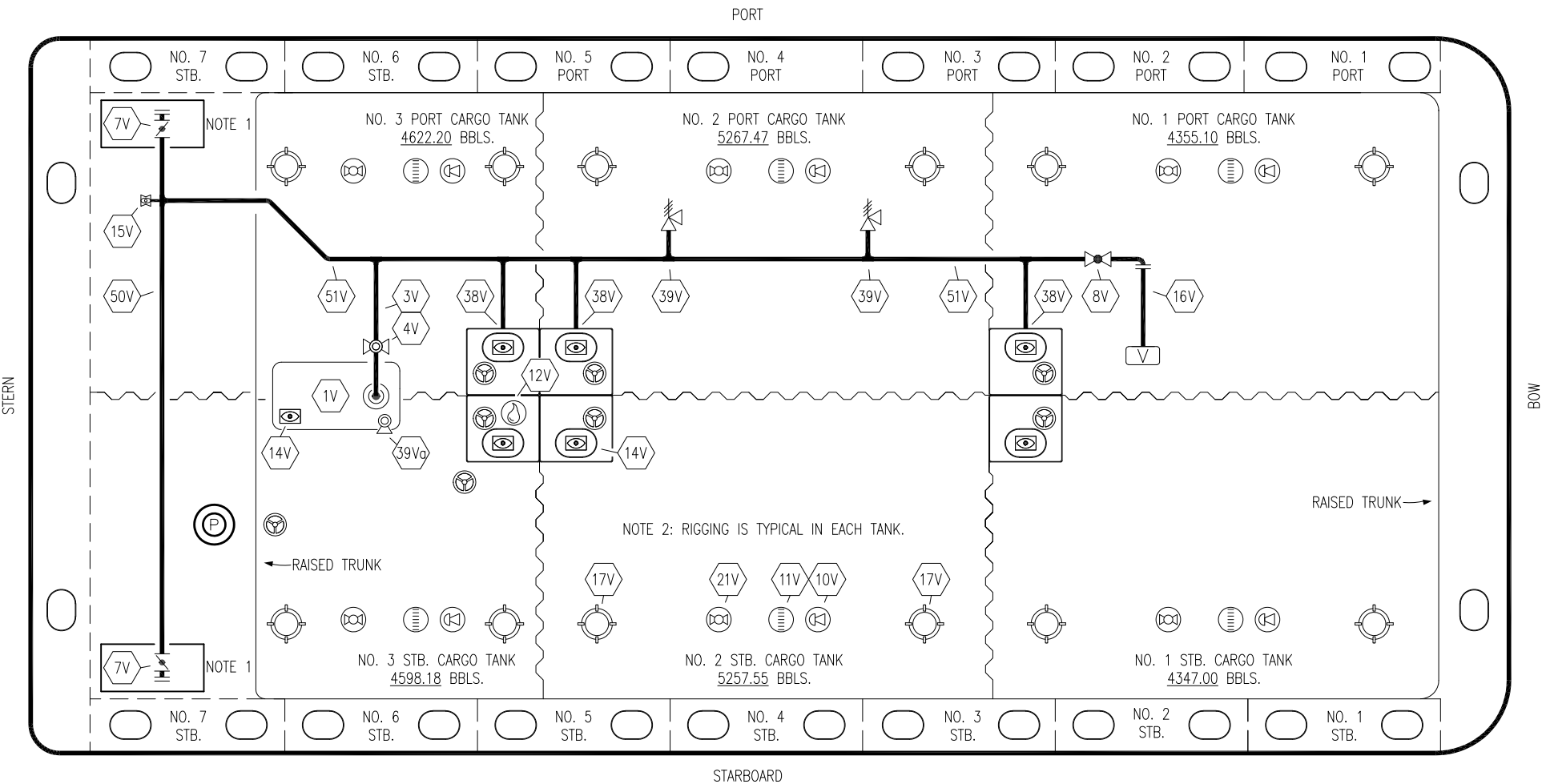
KIRBY INLAND MARINE

CARGO  
PIPING FLOW DIAGRAM

KIRBY 28051

REV. 2

SCALE: NONE  
PAGE: 1 OF 3



NOTE 2: RIGGING IS TYPICAL IN EACH TANK.

NOTE 1: CONTAINMENT P/S

NOTE 2: RIGGING IS TYPICAL IN EACH TANK.

WEST GULF MARINE – EX: N/A

NO	DESCRIPTION	NO	DESCRIPTION
1V	3000 GAL. SLOP TANK	16V	VAPOR VENT STACK
3V	SLOP TANK VENT PIPING	17V	BUTTERWORTH
4V	SLOP TANK SPEC VENT VALVE	21V	HERMETIC GAUGE
7V	HEADER VALVE	38V	VAPOR PENETRATION
8V	VENT STACK VALVE	39V	PRESS/VAC RELIEF VALVE
11V	1-METER GAUGE STICK	39Va	PRESS/VAC RELIEF VALVE
10V	HIGH LEVEL/OVERFILL ALARM	50V	VAPOR HEADER
12V	HERMETIC SAMPLE	51V	VAPOR PIPELINE
14V	SIGHT GLASS	—	ABOVE DECK PIPING
15V	INSPECTION PORT		

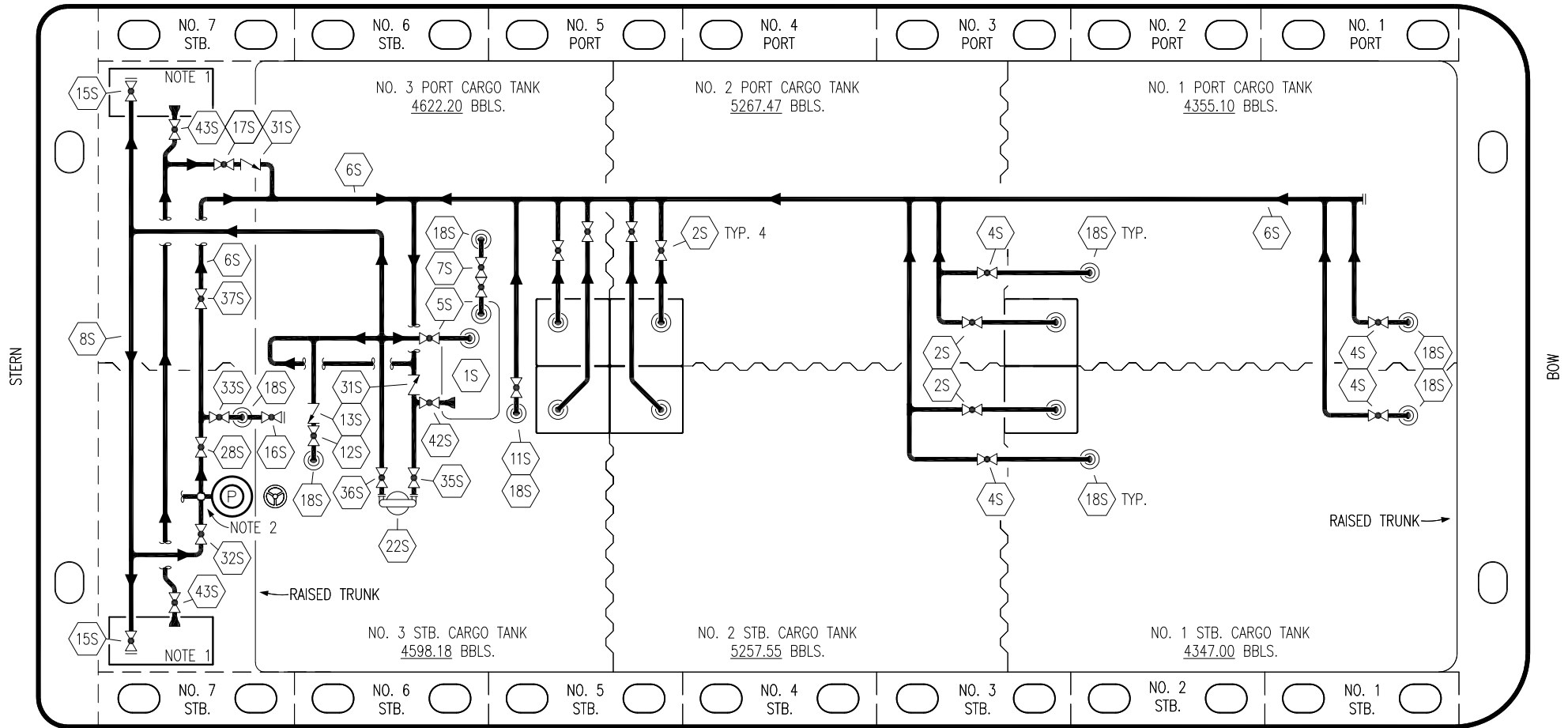
REV.	DATE	BY	CHK	APP	REVISION DESCRIPTION
1	09/13/22	MRV	DDA	FIX	REVISED PER CLIENT COMMENTS
0	11/30/09	RB	RB	OF	APPROVED

KIRBY INLAND MARINE

VAPOR  
PIPING FLOW DIAGRAM

SCALE: NONE	KIRBY 28051	REV.	DATE	BY	CHK	APP	REVISION	DESCRIPTION
PAGE: 2 OF 3		REV. 1						

PORT



NO	DESCRIPTION	NO	DESCRIPTION
1S	SLOP TANK	16S	REMOTE SUCTION CONNECTION
2S	CARGO SUMP SUCTION VALVE	17S	FORWARD CARGO TANK ISOLATION
4S	CARGO TANK SUCTION VALVE	18S	STRIPPING DROP
5S	SLOP TANK SUCTION VALVE	22S	STRIPPING PUMP
6S	SUCTION HEADER PIPING	23S	PIPE SIGHT GLASS
7S	VENT VALVE TO CARGO TANK 3	28S	CARGO PIPING SUCTION
8S	DISCHARGE HEADER PIPING	31S	CHECK VALVE
11S	LOWER CARGO PIPELINE SUCTION VALVE	32S	PUMP WELL PRIMER VALVE
12S	RETURN TO CARGO TANK VALVE	33S	PUMP WELL SUCTION VALVE
13S	RETURN TO CARGO CHECK VALVE	35S	STRIPPING VALVE
15S	HEADER DISCHARGE VALVE	36S	STRIPPING PUMP DISCHARGE VALVE

NO	DESCRIPTION
37S	BLOCK VALVE
42S	SLOP TANK FILL VALVE
43S	DRIP PAN SUCTION VALVE

— ABOVE DECK PIPING

STARBOARD

NOTE 1: CONTAINMENT P/S  
 NOTE 2: 28S & 32S CONNECT TO 8" CARGO PUMP DISCHARGE PIPING.

WEST GULF MARINE -- EX: N/A

REV.	DATE	BY	CHK	APP	REVISION DESCRIPTION
1	09/13/22	MRV	DDA	FIX	REVISED PER CLIENT COMMENTS
0	11/30/09	RB	RB	OF	APPROVED

KIRBY INLAND MARINE 

**STRIPPING  
 PIPING FLOW DIAGRAM**

SCALE: NONE  
 PAGE: 3 OF 3

**KIRBY 28051**

REV. **1**