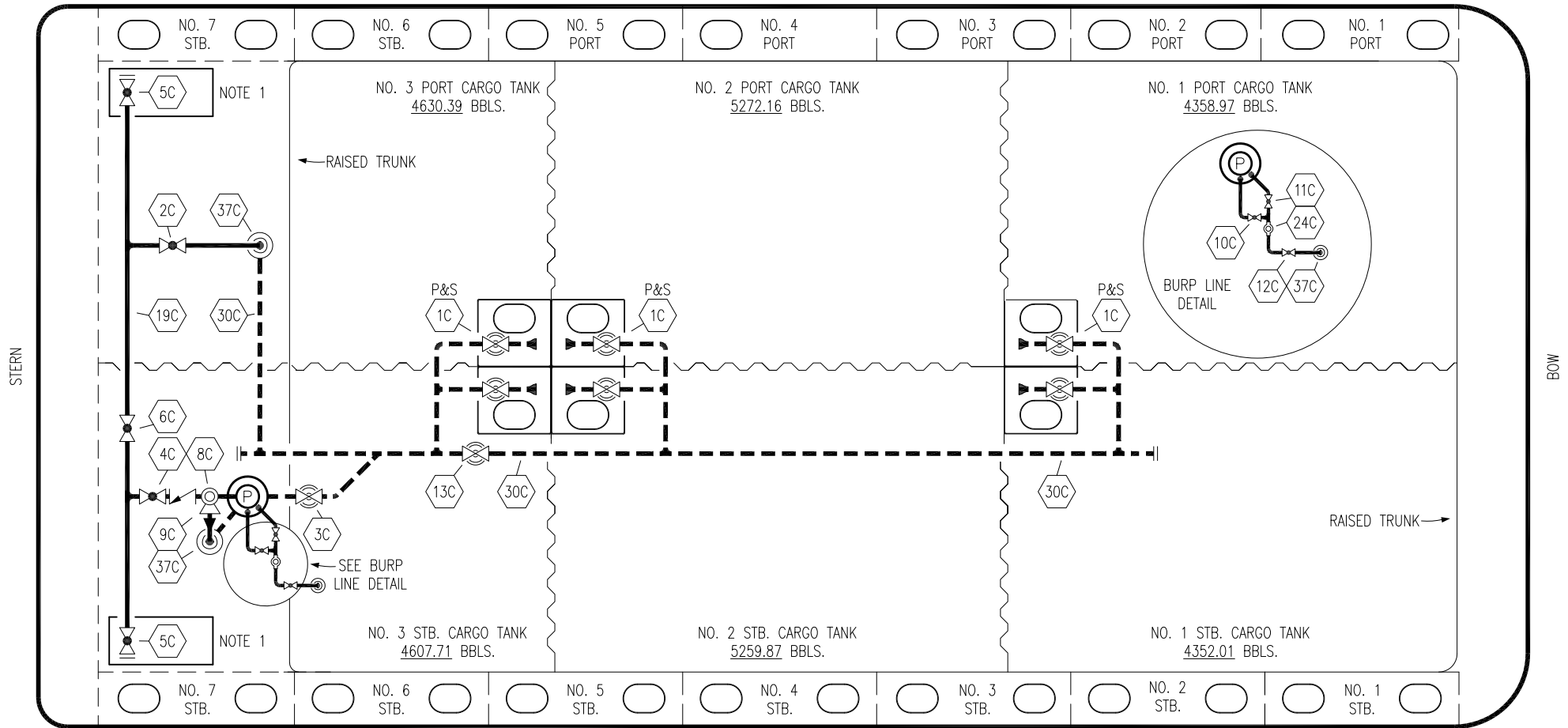


PORT



STERN

BOW

STARBOARD

NO	DESCRIPTION	NO	DESCRIPTION
1C	CARGO TANK VALVE	12C	1" BURP VALVE RETURN TO CARGO TANK
2C	LOAD VALVE	13C	CARGO PIPING BLOCK VALVE
3C	MASTER SUCTION VALVE	19C	CARGO HEADER
4C	DISCHARGE VALVE	24C	1" PIPE FLOW INDICATOR
5C	HEADER VALVE	30C	CARGO PIPELINE
6C	SALVAGE VALVE	37C	CARGO DROP
8C	RELIEF VALVE	—	— ABOVE DECK PIPING
9C	CHECK VALVE	---	--- BELOW DECK PIPING
10C	1" BURP VALVE		
11C	1" BLEED OFF VALVE		

NOTE 1: CONTAINMENT P/S

WEST GULF MARINE -- EX: N/A

REV.	DATE	BY	CHK	APP	REVISION DESCRIPTION
1	06/16/22	MRV	DDA	WHI	REVISED PER CLIENT COMMENTS
0	11/16/09	RB	RB	OF	APPROVED

KIRBY INLAND MARINE

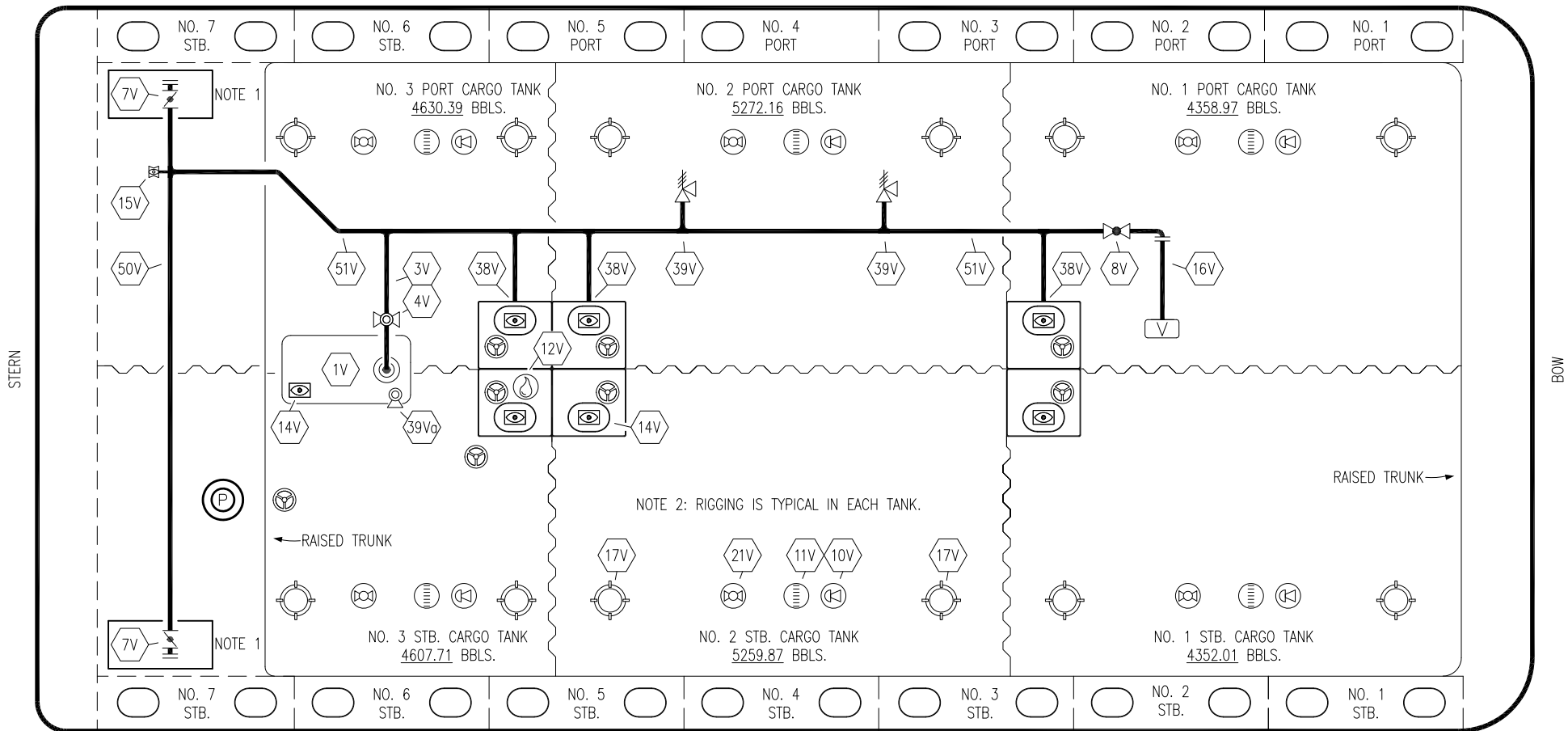
**CARGO
PIPING FLOW DIAGRAM**

SCALE: NONE
PAGE: 1 OF 3

KIRBY 28047

REV. **1**

PORT



NOTE 2: RIGGING IS TYPICAL IN EACH TANK.

RAISED TRUNK →

← RAISED TRUNK

STARBOARD

NO	DESCRIPTION	NO	DESCRIPTION
1V	3000 GAL. SLOP TANK	16V	8" VAPOR VENT STACK
3V	2" SLOP TANK VENT PIPING	17V	20" BUTTERWORTH
4V	2" SLOP TANK SPEC VENT VALVE	21V	2" HERMETIC GAUGE
7V	8" HEADER VALVE	38V	8" VAPOR PENETRATION
8V	8" VENT STACK VALVE	39V	6" PRESS/VAC RELIEF VALVE
11V	8" 1-METER GAUGE STICK	39V _a	4" PRESS/VAC RELIEF VALVE
10V	8" HIGH LEVEL/OVERFILL ALARM	50V	8" VAPOR HEADER
12V	2" HERMETIC SAMPLE	51V	8" VAPOR PIPELINE
14V	8" SIGHT GLASS	—	ABOVE DECK PIPING
15V	2" INSPECTION PORT		

NOTE 1: CONTAINMENT P/S

NOTE 2: RIGGING IS TYPICAL IN EACH TANK.

WEST GULF MARINE — EX: N/A

REV.	DATE	BY	CHK	APP	REVISION DESCRIPTION
1	06/16/22	MRV	DDA	WHI	REVISED PER CLIENT COMMENTS
0	11/16/09	RB	RB	OF	APPROVED

KIRBY INLAND MARINE 

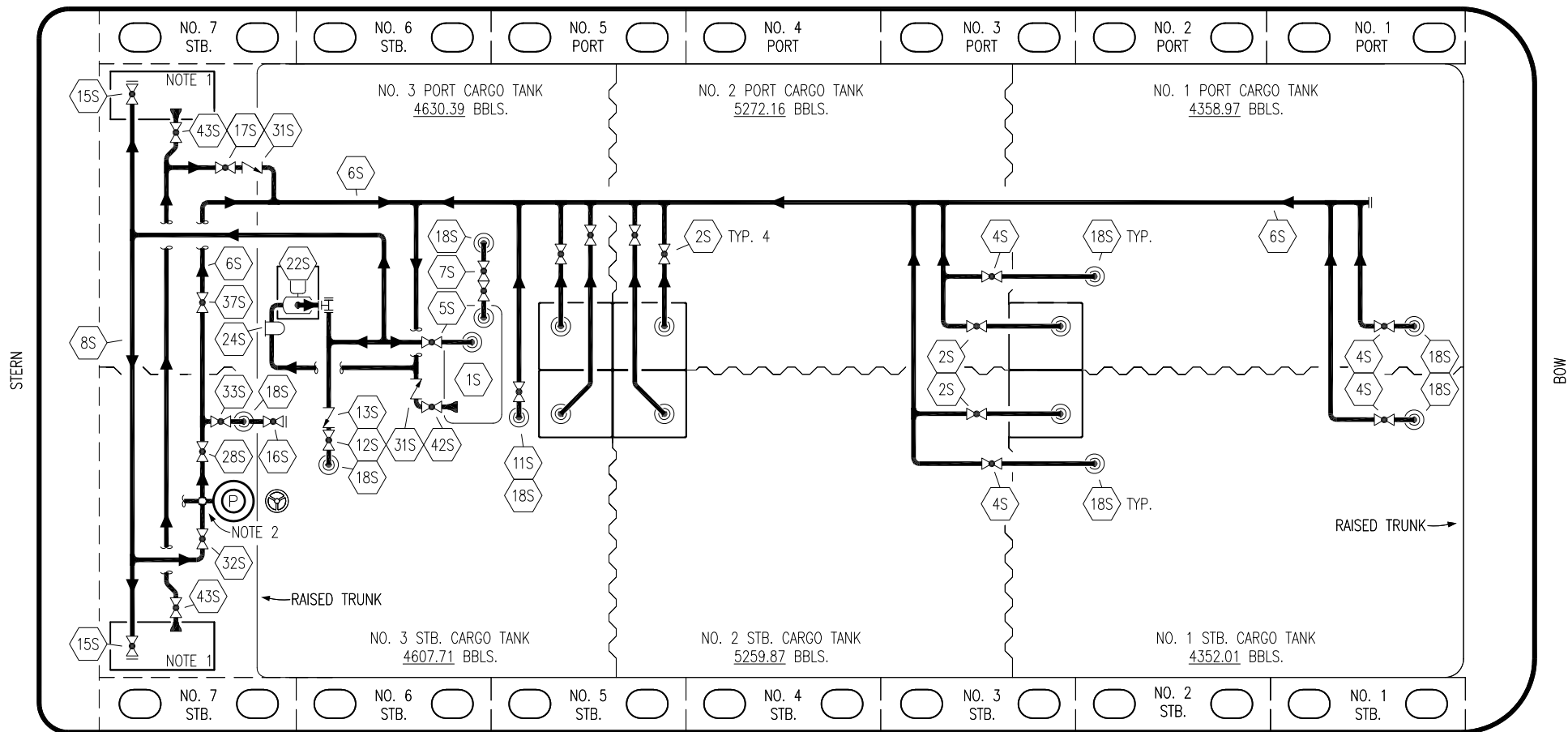
**VAPOR
PIPING FLOW DIAGRAM**

SCALE: NONE
PAGE: 2 OF 3

KIRBY 28047

REV. **1**

PORT



STERN

BOW


STARBOARD

NO	DESCRIPTION	NO	DESCRIPTION
1S	SLOP TANK	17S	FORWARD CARGO TANK ISOLATION
2S	CARGO SUMP SUCTION VALVE	18S	STRIPPING DROP
4S	CARGO TANK SUCTION VALVE	22S	STRIPPING PUMP
5S	SLOP TANK SUCTION VALVE	24S	BASKET STRAINER
6S	SUCTION HEADER PIPING	28S	CARGO PIPING SUCTION
7S	VENT VALVE TO CARGO TANK 3	31S	CHECK VALVE
8S	DISCHARGE HEADER PIPING	32S	PUMP WELL PRIMER VALVE
11S	LOWER CARGO PIPELINE SUCTION VALVE	33S	PUMP WELL SUCTION VALVE
12S	RETURN TO CARGO TANK VALVE	37S	BLOCK VALVE
13S	RETURN TO CARGO CHECK VALVE	42S	SLOP TANK FILL VALVE
15S	HEADER DISCHARGE VALVE	43S	DRIP PAN SUCTION VALVE
16S	REMOTE SUCTION CONNECTION		— ABOVE DECK PIPING

NOTE 1: CONTAINMENT P/S

NOTE 2: 28S & 32S CONNECT TO 8" CARGO PUMP DISCHARGE PIPING.

WEST GULF MARINE – EX: N/A

						 KIRBY INLAND MARINE	
						STRIPPING	
						PIPING FLOW DIAGRAM	
1	06/16/22	MRV	DDA	WHI	REVISED PER CLIENT COMMENTS		
0	11/16/09	RB	RB	OF	APPROVED		
SCALE:	NONE					KIRBY 28047	
REV.	DATE	BY	CHK	APP	REVISION DESCRIPTION		
						REV. 1	