

WEST GULF MARINE - EX: N/A



**CARGO**  
**PIPING FLOW DIAGRAM**

REV.	DATE	BY	CHK	APP	REVISION DESCRIPTION
0	11/30/09	RB	OF	APPROVED	

SCALE: NONE  
PAGE: 1 OF 3  
**KIRBY 28038**

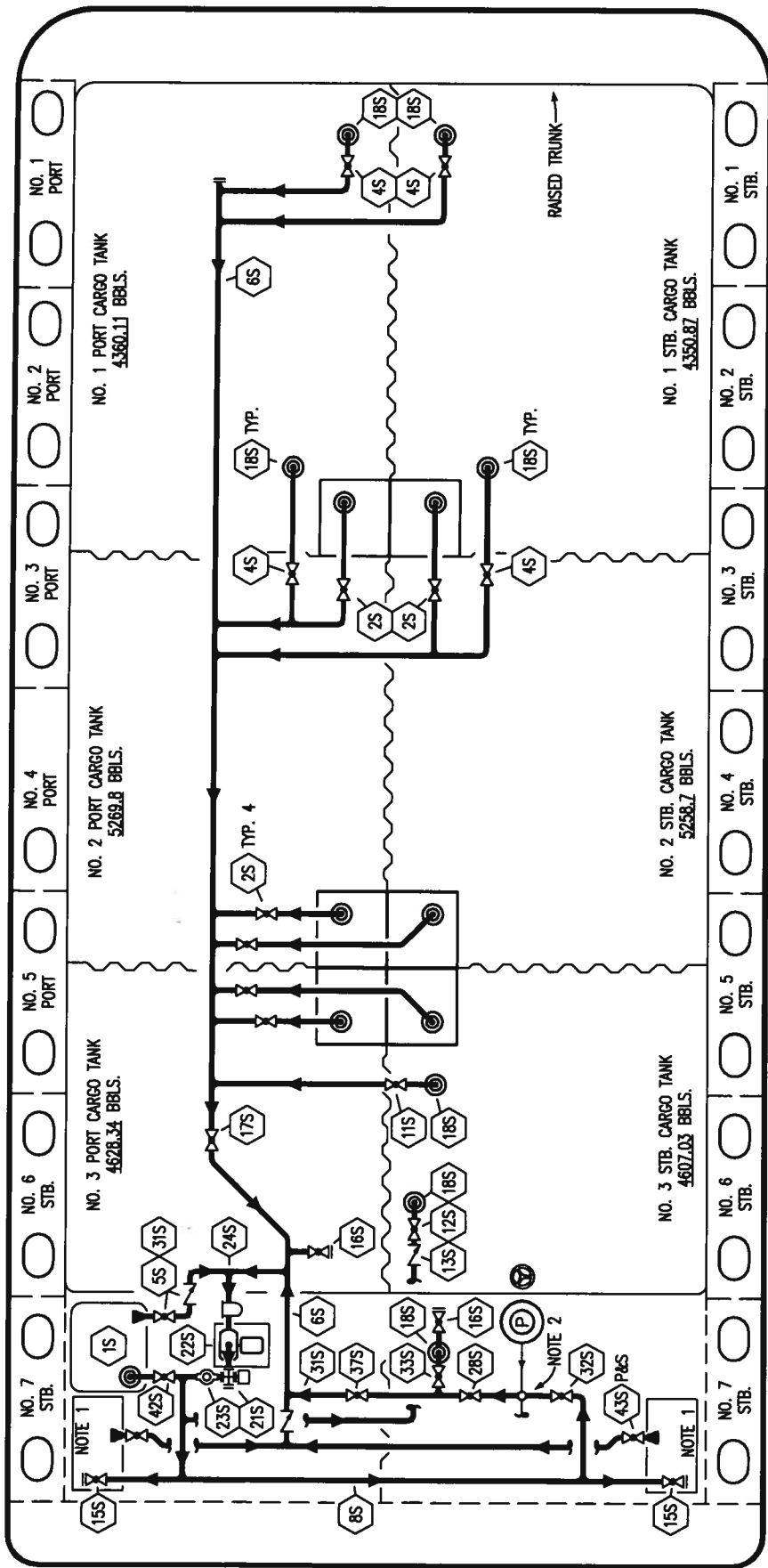
- |     |                      |     |                                    |
|-----|----------------------|-----|------------------------------------|
| NO  | DESCRIPTION          | NO  | DESCRIPTION                        |
| 1C  | CARGO TANK VALVE     | 12C | 1" BURP VALVE RETURN TO CARGO TANK |
| 2C  | LOAD VALVE           | 13C | CARGO PIPING BLOCK VALVE           |
| 3C  | MASTER SUCTION VALVE | 19C | CARGO HEADER                       |
| 4C  | DISCHARGE VALVE      | 24C | 1" PIPE FLOW INDICATOR             |
| 5C  | HEADER VALVE         | 30C | CARGO PIPELINE                     |
| 6C  | SALVAGE VALVE        | 37C | CARGO DROP                         |
| 8C  | RELIEF VALVE         | --- | ABOVE DECK PIPING                  |
| 9C  | CHECK VALVE          | --- | BELOW DECK PIPING                  |
| 10C | 1" BURP VALVE        |     |                                    |
| 11C | 1" BLEED OFF VALVE   |     |                                    |

NOTE 1: CONTAINMENT P/S



MOB

PORT



STARBOARD

WEST GULF MARINE - EX: N/A



**KIRBY INLAND MARINE**

**STRIPPING  
PIPING FLOW DIAGRAM**

NO.	DESCRIPTION	NO.	DESCRIPTION	NO.	DESCRIPTION
1S	3000 GAL SLOP TANK	17S	FORWARD CARGO TANK ISOLATION	42S	SLOP TANK FILL VALVE
2S	CARGO SUMP SUCTION VALVE	18S	STRIPPING DROP	43S	DRIP PAN SUCTION VALVE
4S	CARGO TANK SUCTION VALVE	21S	PRIMING POT		ABOVE DECK PIPING
5S	SLOP TANK SUCTION VALVE	22S	STRIPPING PUMP		
6S	SUCTION HEADER PIPING	23S	2" PIPE SIGHT GLASS		
8S	DISCHARGE HEADER PIPING	24S	BASKET STRAINER		
11S	LOWER CARGO PIPELINE SUCTION VALVE	28S	CARGO PIPING SUCTION		
12S	RETURN TO CARGO TANK VALVE	31S	CHECK VALVE		
13S	RETURN TO CARGO CHECK VALVE	32S	PUMP WELL PRIMER VALVE		
15S	HEADER DISCHARGE VALVE	33S	PUMP WELL SUCTION VALVE		
16S	REMOTE SUCTION CONNECTION	37S	BLOCK VALVE		

STARBOARD

NOTE 1: CONTAINMENT P/S

NOTE 2: 28S & 32S CONNECT TO 8" CARGO PUMP DISCHARGE PIPING.

REV.	DATE	BY	CHK	APP	REVISION DESCRIPTION
0	11/30/09	RB	OF	APPROVED	

SCALE: NONE  
PAGE: 3 OF 3

**KIRBY 28038**

REV. **0**