

NO	SIZE	DESCRIPTION	NO	SIZE	DESCRIPTION
1C		CARGO TANK VALVE	12C	1"	BURP VALVE RETURN TO CARGO TANK
2C		LOAD VALVE	13Ca	10"	CARGO PIPING BLOCK VALVE
3C		MASTER SUCTION VALVE	13Cb	12"	CARGO PIPING BLOCK VALVE
4C		DISCHARGE VALVE	14V	1"	SIGHT GLASS
5C		HEADER VALVE	19C		CARGO HEADER
6C		SALVAGE VALVE	36C		PRESSURE GAUGE
8C		RELIEF VALVE	37C		CARGO DROP
9C		CHECK VALVE	—		— ABOVE DECK PIPING
10C	1"	BURP VALVE	---		--- BELOW DECK PIPING
11C	1"	BLEED OFF VALVE			

NOTE 1: CONTAINMENT PORT & STB.

WEST GULF MARINE

REV.	DATE	BY	CHK	APP	REVISION DESCRIPTION
2	03/19/20	MRV	DDA		REVISED PER CLIENT COMMENTS
1	02/13/13	KS	DDA		REVISED PIPING
0	02/09/09	WK	RB	OF	APPROVED

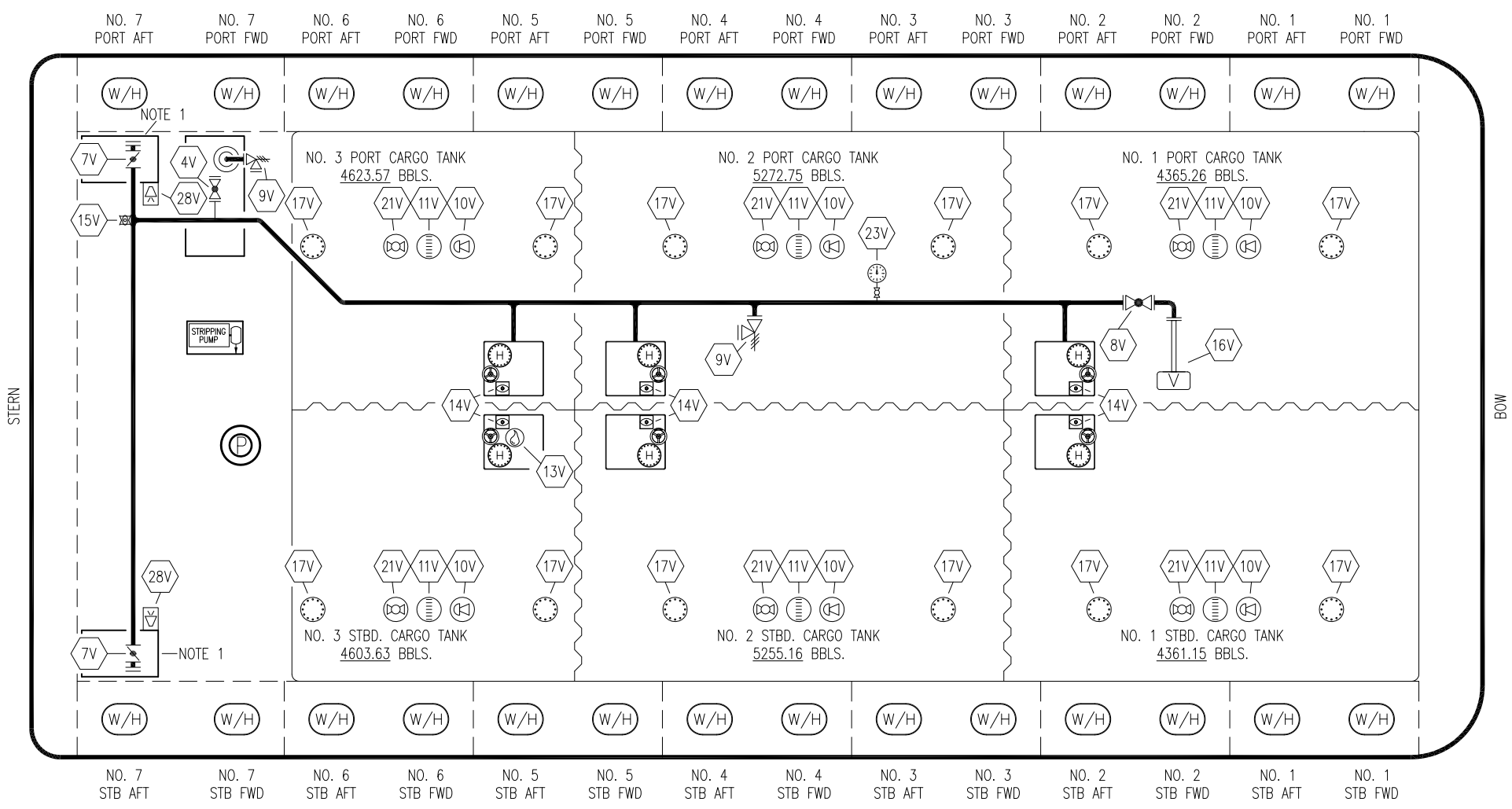
KIRBY INLAND MARINE 

**CARGO
PIPING FLOW DIAGRAM**

SCALE: NONE
PAGE: 1 OF 3

KIRBY 28034

REV. **2**




NO	SIZE	DESCRIPTION	NO	SIZE	DESCRIPTION
4V	2"	SLOP TANK SPEC VENT VALVE	17V	20"	BUTTERWORTH
7V	8"	HEADER VALVE	21V	2"	HERMETIC GAUGE SAMPLING
8V	8"	VENT STACK VALVE	23V		PRESSURE GAUGE
9V	6"	PRESS/VAC VALVE	28V	8"	HIGH LEVEL/OVERFILL ALARM DOCK CONNECTION
10V	8"	HIGH LEVEL/OVERFILL ALARM			ABOVE DECK PIPING
11V	8"	GAUGE STICK			
14V	8"	SIGHT GLASS			
15V	2"	INSPECTION PORT			
16V	8"	VAPOR VENT STACK			

NOTE 1: CONTAINMENT PORT & STB.

WEST GULF MARINE

REV.	DATE	BY	CHK	APP	REVISION DESCRIPTION
1	03/19/20	MRV	DDA		REVISED PER CLIENT COMMENTS
0	02/09/09	WK	RB	OF	APPROVED

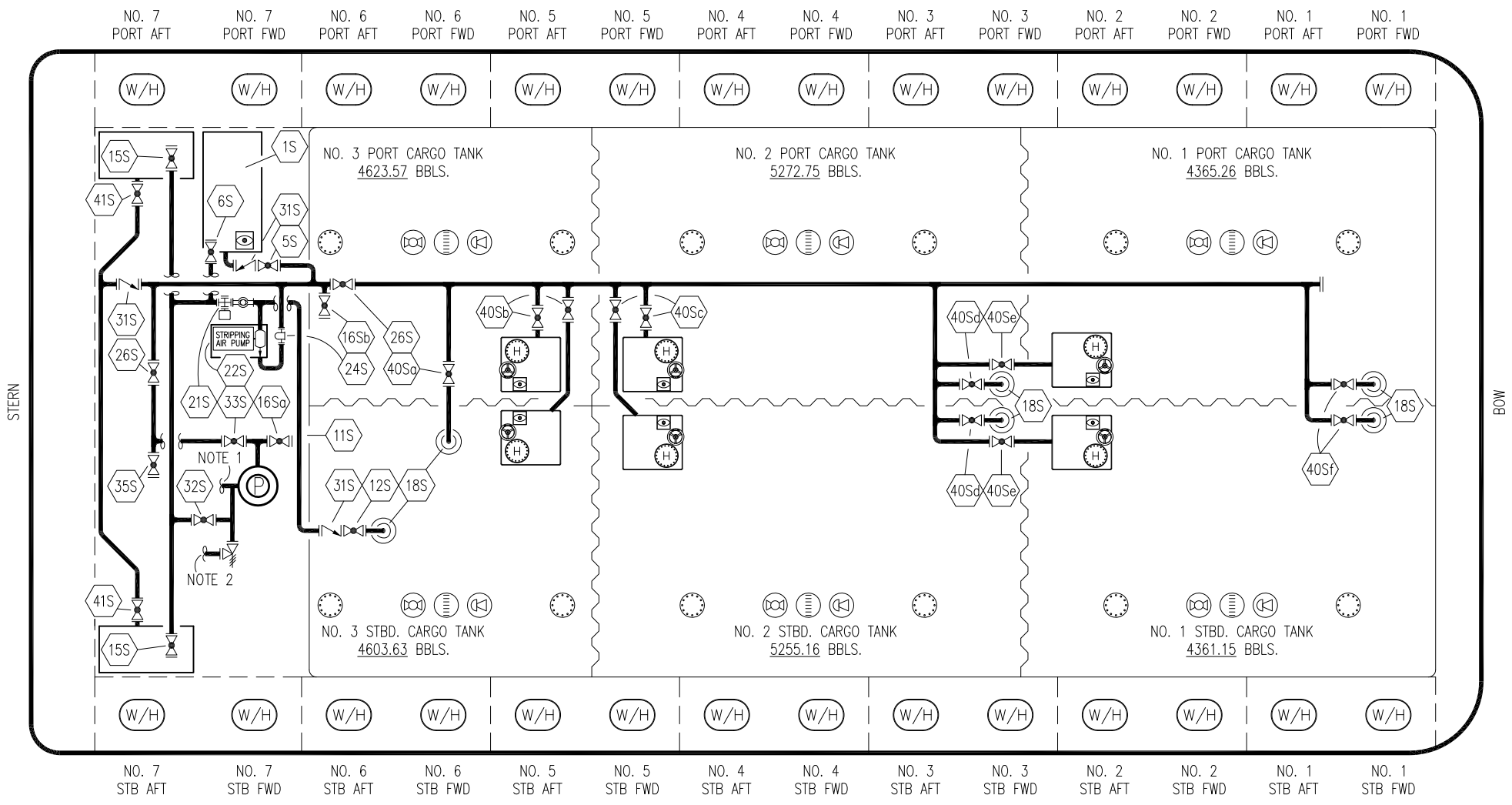


KIRBY INLAND MARINE

VAPOR PIPING FLOW DIAGRAM

KIRBY 28034

SCALE: NONE
PAGE: 2 OF 3
REV. 1




NO	DESCRIPTION	NO	DESCRIPTION	NO	DESCRIPTION
1S	SLOP TANK, 3000 GALLONS	22S	STRIPPING PUMP	40Sd	CARGO TANK SUCTION, NO. 2 P/S FWD. L.P.
5S	SLOP TANK SUCTION VALVE	24S	BASKET STRAINER	40Se	CARGO TANK SUCTION, NO. 1 P/S
6S	SLOP TANK FILL PIPING	26S	STRIPPING HEADER BLOCK VALVE	40Sf	CARGO TANK SUCTION, NO. 1 P/S FWD. L.P.
11S	RETURN TO CARGO TANK PIPING	31S	CHECK VALVE	41S	CONTAINMENT SUCTION
12S	RETURN TO CARGO TANK VALVE	32S	PUMP WELL PRIMER VALVE		
15S	DISCHARGE HEADER VALVE	33S	PUMP WELL SUCTION		
16So	REMOTE PUMP WELL SUCTION	35S	STRIPPING VALVE		
16Sb	REMOTE SUCTION CONNECTION	40So	CARGO TANK SUCTION, MAIN		
18S	STRIPPING DROP	40Sb	CARGO TANK SUCTION, NO. 3 P/S		
21S	PRIMING POT W/ SIGHT GLASS	40Sc	CARGO TANK SUCTION, NO. 2 P/S		

NOTE 1: CONT. TO CARGO HEADER PIPING
 NOTE 2: CONT. TO BELOW DECK CARGO PIPING

ABOVE DECK PIPING

WEST GULF MARINE



KIRBY INLAND MARINE

STRIPPING PIPING FLOW DIAGRAM

KIRBY 28034

REV.	DATE	BY	CHK	APP	REVISION DESCRIPTION	SCALE: NONE	PAGE: 3 OF 3
					1 03/19/20 MRV DDA REVISED PER CLIENT COMMENTS		
					0 02/09/09 WK RB OF APPROVED		