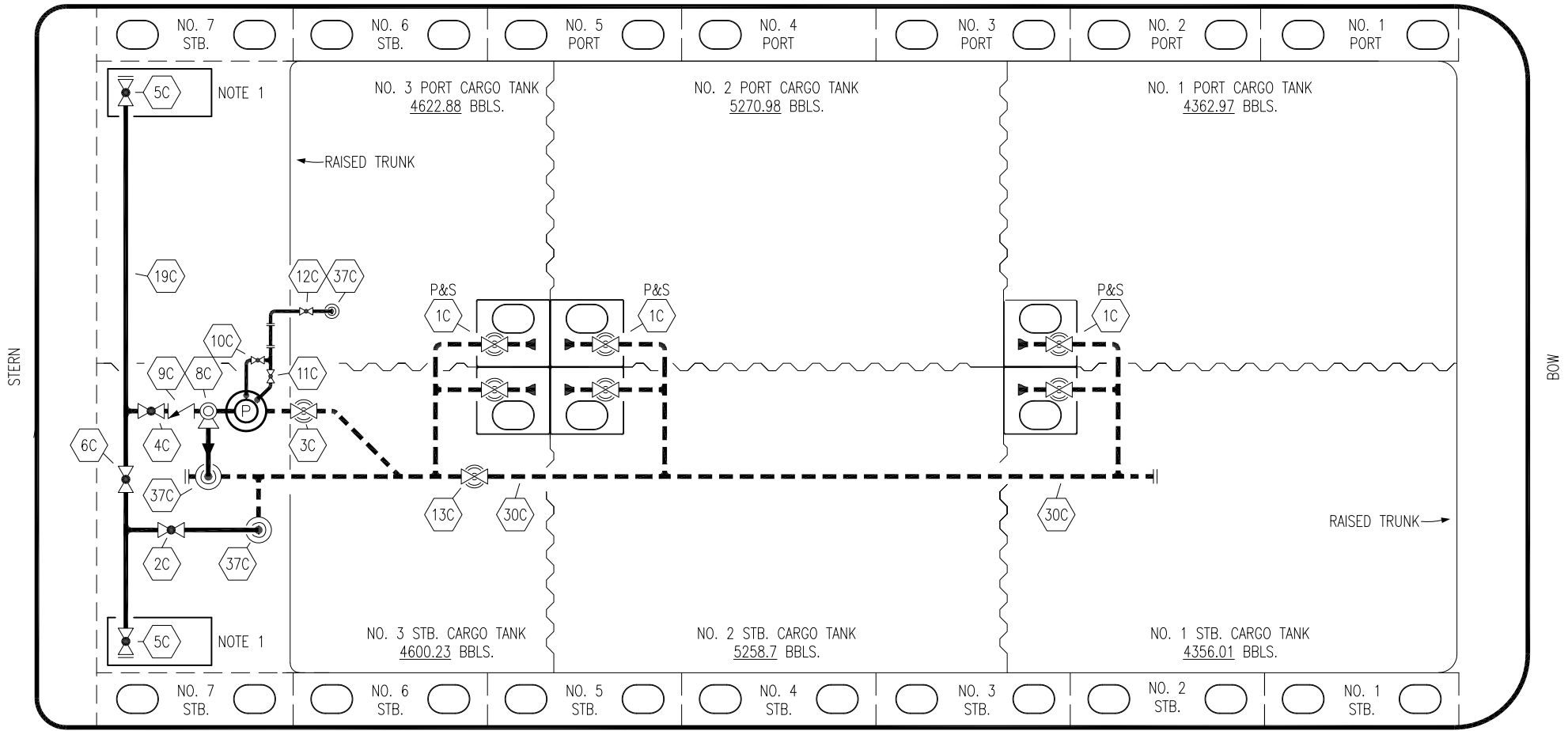





PORT



STERN

BOW


STARBOARD

- |     |                      |   |  |
|-----|----------------------|---|--|
| NO  | DESCRIPTION          | NO  | DESCRIPTION  |
| 1C  | CARGO TANK VALVE     | 12C   | 1" BURP VALVE RETURN TO CARGO TANK   |
| 2C  | LOAD VALVE           | 13C   | CARGO PIPING BLOCK VALVE   |
| 3C  | MASTER SUCTION VALVE | 19C   | CARGO HEADER   |
| 4C  | DISCHARGE VALVE      | 30C   | CARGO PIPELINE   |
| 5C  | HEADER VALVE         | 37C   | CARGO DROP  |
| 6C  | SALVAGE VALVE        |  | ABOVE DECK PIPING  |
| 8C  | RELIEF VALVE         |  | BELOW DECK PIPING  |
| 9C  | CHECK VALVE          |   |  |
| 10C | 1" BURP VALVE        |   |  |
| 11C | 1" BLEED OFF VALVE   |   |  |

NOTE 1: CONTAINMENT P/S

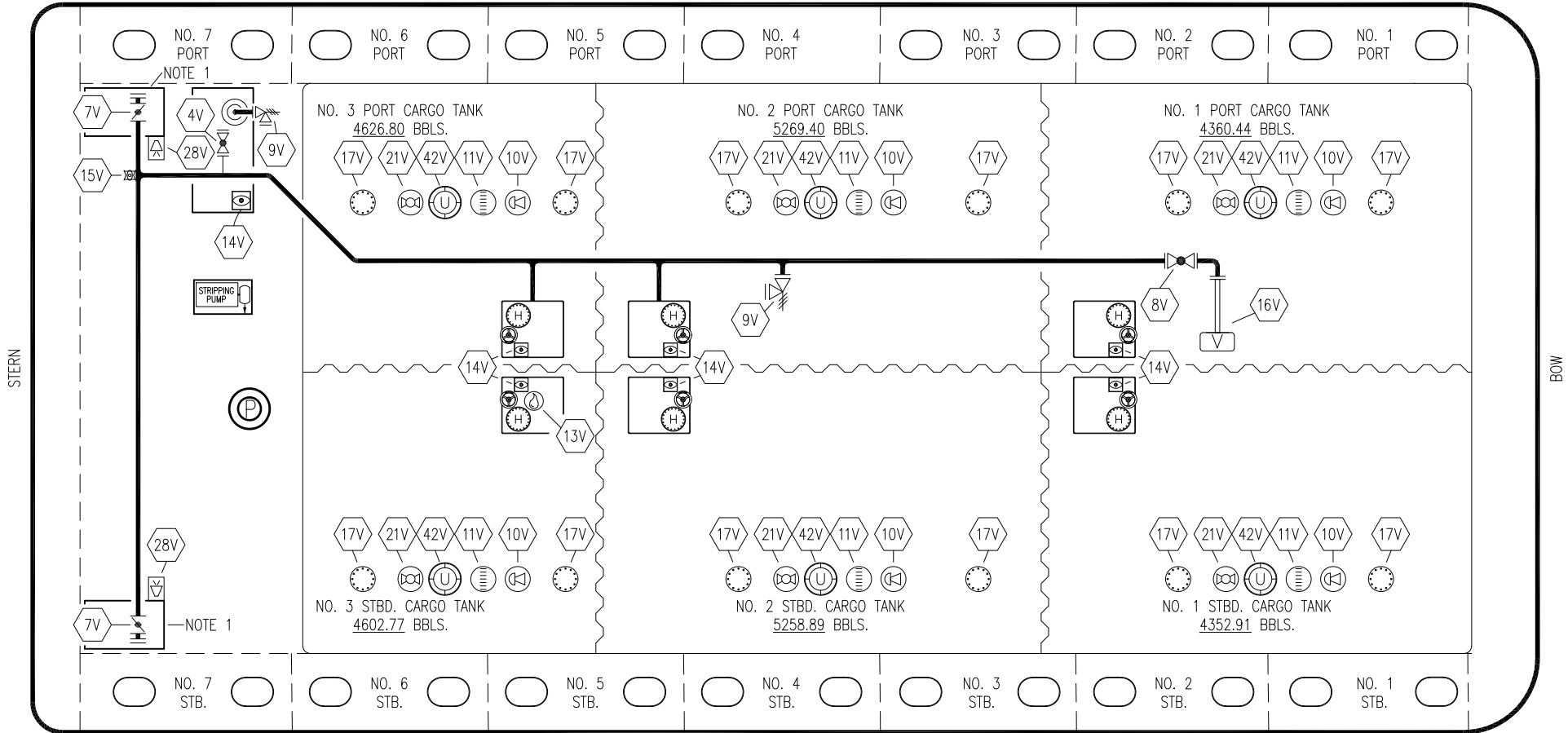
WEST GULF MARINE

REV.	DATE	BY	CHK	APP	REVISION DESCRIPTION
2	11/11/19	NRB	DDA		REVISED PER CLIENT COMMENTS
1	02/13/13	KS	DDA		REVISED PIPING
0	02/09/09	WK	RB	OF	APPROVED

KIRBY INLAND MARINE 

CARGO  
PIPING FLOW DIAGRAM

SCALE: NONE	KIRBY 28031	REV.
PAGE: 1 OF 3		2




NO	SIZE	DESCRIPTION
4V	2"	SLOP TANK SPEC VENT VALVE
7V	8"	HEADER VALVE
8V	8"	VENT STACK VALVE
9V	6"	PRESS/VAC VALVE
10V	8"	HIGH LEVEL/OVERFILL ALARM
11V	8"	GAUGE STICK
13V		HERMETIC SAMPLE ONLY
14V	8"	SIGHT GLASS
15V	2"	INSPECTION PORT
16V	8"	VAPOR VENT STACK

NO	SIZE	DESCRIPTION
17V	20"	BUTTERWORTH
21V	2"	HERMETIC GAUGE
28V	8"	HIGH LEVEL/OVERFILL ALARM DOCK CONNECTION
42V	10'	ULLAGE
—		ABOVE DECK PIPING

NOTE 1: CONTAINMENT PORT & STB.

WEST GULF MARINE

REV.	DATE	BY	CHK	APP	REVISION DESCRIPTION
1	11/17/11	JN	DDA		REMOVED RADAR GAUGE
0	02/09/09	WK	RB	OF	APPROVED

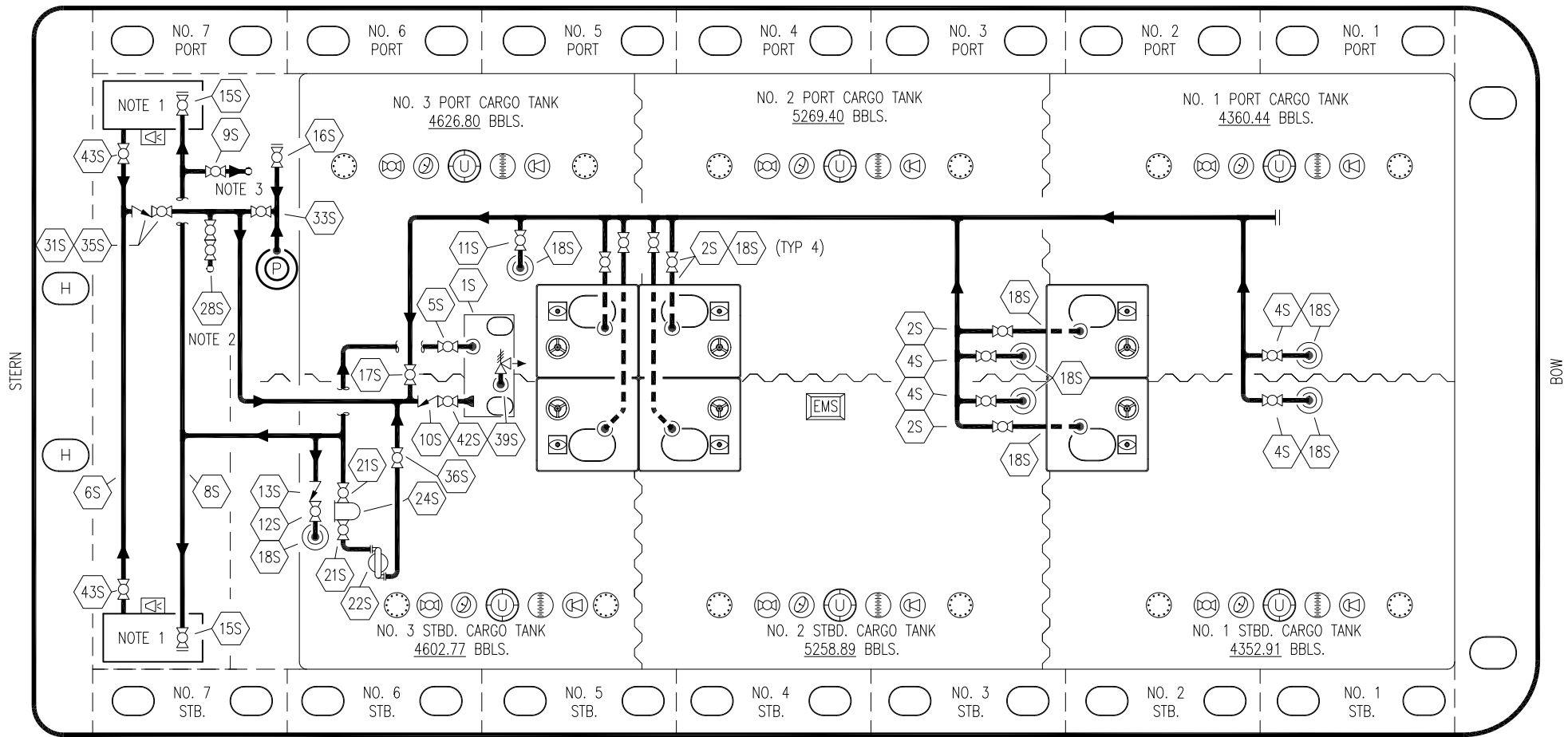


**KIRBY INLAND MARINE**

**VAPOR PIPING FLOW DIAGRAM**

**KIRBY 28031**

SCALE: NONE	REV. 1
PAGE: 2 OF 3	



NO	DESCRIPTION
1S	3000 GAL SLOP TANK
2S	CARGO TANK SUMP SUCTION VALVE
4S	CARGO TANK SUCTION VALVE
5S	SLOP TANK SUCTION VALVE
6S	SUCTION HEADER
8S	DISCHARGE HEADER
9S	DEEP WELL FILL VALVE
10S	SLOP TANK CHECK VALVE
11S	CARGO PIPELINE SUCTION VALVE
12S	RETURN TO CARGO TANK VALVE
13S	RETURN TO CARGO CHECK VALVE

NO	DESCRIPTION
15S	HEADER DISCHARGE VALVE
16S	REMOTE SUCTION CONNECTION
17S	FORWARD CARGO TANK ISOLATION
18S	⊙ STRIPPING PENETRATION OR DROP
21S	BLOCK VALVE
22S	PNEUMATIC PUMP
24S	BASKET STRAINER
28S	CARGO PIPING SUCTION
31S	CHECK VALVE
33S	PUMP WELL SUCTION
35S	STRIPPING VALVE

NO	DESCRIPTION
39S	PRES/VAC VALVE
42S	SLOP TANK DISCHARGE VALVE
43S	DRIP TANK SUCTION VALVE
---	— ABOVE DECK PIPING
---	- - - BELOW DECK PIPING

NOTE 1: CONTAINMENT TANK PORT & STARBOARD  
 NOTE 2: CONNECTS TO CARGO PUMP DISCHARGE PIPING  
 NOTE 3: CONNECTS TO CARGO RELIEF VALVE DISCHARGE PIPING

WEST GULF MARINE

REV.	DATE	BY	CHK	APP	REVISION DESCRIPTION
1	11/11/19	NRB	DDA		REVISED PER CLIENT COMMENTS
0	02/09/09	WK	RB	OF	APPROVED



**KIRBY INLAND MARINE**

**STRIPPING**

**PIPING FLOW DIAGRAM**

**KIRBY 28031**

SCALE: NONE

PAGE: 3 OF 3

REV. **1**