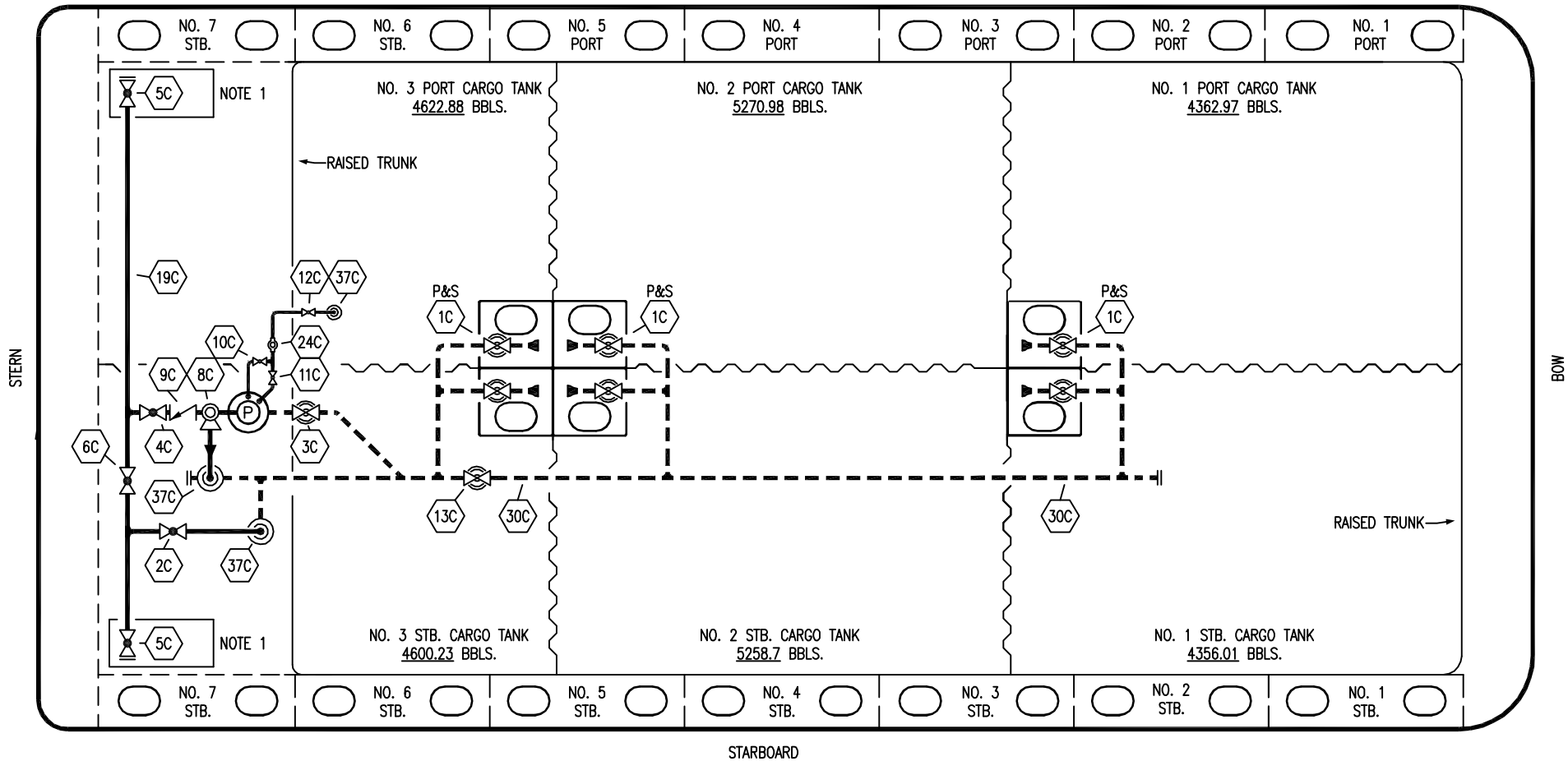


PORT



STARBOARD

NO	DESCRIPTION	NO	DESCRIPTION
1C	CARGO TANK VALVE	12C	1" BURP VALVE RETURN TO CARGO TANK
2C	LOAD VALVE	13C	CARGO PIPING BLOCK VALVE
3C	MASTER SUCTION VALVE	19C	CARGO HEADER
4C	DISCHARGE VALVE	24C	1" PIPE FLOW INDICATOR
5C	HEADER VALVE	30C	CARGO PIPELINE
6C	SALVAGE VALVE	37C	CARGO DROP
8C	RELIEF VALVE	—	— ABOVE DECK PIPING
9C	CHECK VALVE	---	--- BELOW DECK PIPING
10C	1" BURP VALVE		
11C	1" BLEED OFF VALVE		

NOTE 1: CONTAINMENT P/S

WEST GULF MARINE

REV.	DATE	BY	CHK	APP	REVISION DESCRIPTION
2	02/13/13	KS	DDA		REVISED PIPING
1	04/06/09	WK	RB	OF	DELETE STB. CARGO LINE
0	02/09/09	WK	RB	OF	APPROVED

KIRBY INLAND MARINE 

**CARGO  
PIPING FLOW DIAGRAM**

SCALE: NONE  
PAGE: 1 OF 3

**KIRBY 28030**

REV. **2**



