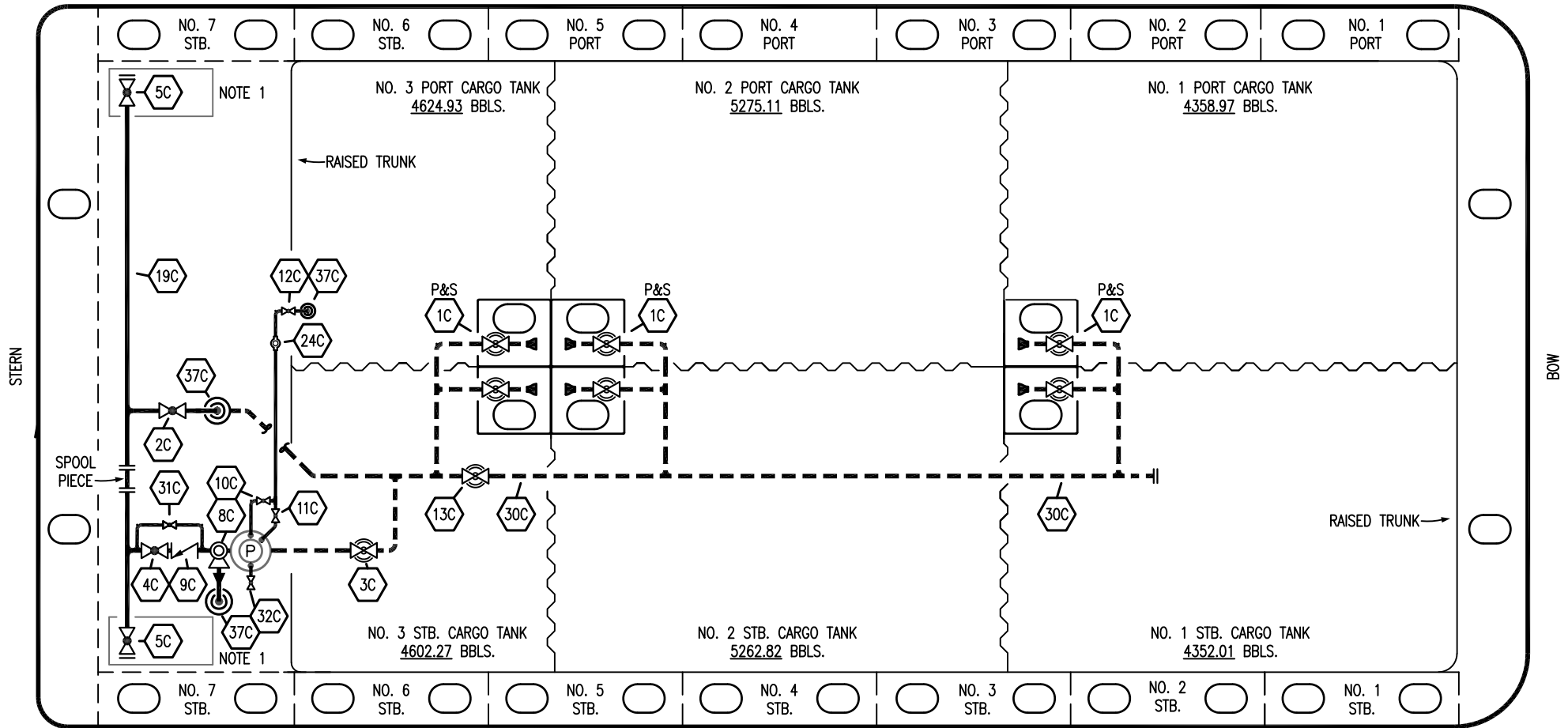


PORT



STARBOARD

NO	DESCRIPTION	NO	DESCRIPTION
1C	CARGO TANK VALVE	12C	1" BURP VALVE RETURN TO CARGO TANK
2C	LOAD VALVE	13C	CARGO PIPING BLOCK VALVE
3C	MASTER SUCTION VALVE	19C	CARGO HEADER
4C	DISCHARGE VALVE	24C	1" PIPE FLOW INDICATOR
5C	HEADER VALVE	30C	CARGO PIPELINE
8C	RELIEF VALVE	31C	BYPASS VALVE
9C	CHECK VALVE	32C	DEEP WELL PRIMER VALVE
10C	1" BURP VALVE	37C	CARGO DROP
11C	1" BLEED OFF VALVE	—	—
		—	ABOVE DECK PIPING
		---	BELOW DECK PIPING

NOTE 1: CONTAINMENT P/S

WEST GULF MARINE -- EX: N/A

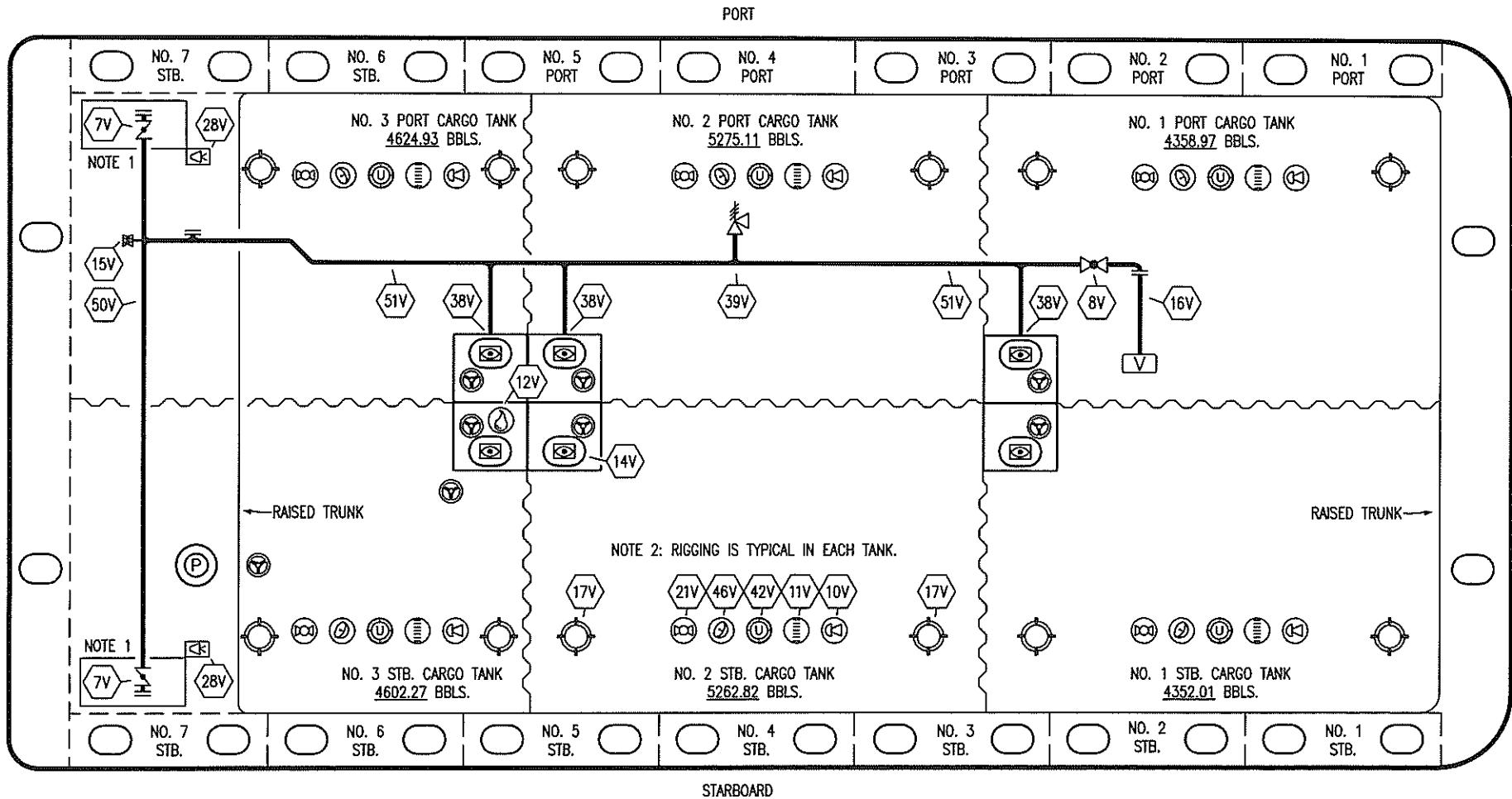
REV.	DATE	BY	CHK	APP	REVISION DESCRIPTION
3	06/08/23	MRV	DDA	REM	REVISED PER CLIENT COMMENTS
2	09/15/17	WFB	DDA		REVISED PER CLIENT COMMENTS
1	09/30/15	BB	SC		REVISED PER CLIENT COMMENTS
0	11/23/09	RB	RB	OF	APPROVED

KIRBY INLAND MARINE 

**CARGO
PIPING FLOW DIAGRAM**

SCALE: NONE
PAGE: 1 OF 3

KIRBY 28021 REV. **3**



NO	DESCRIPTION	NO	DESCRIPTION
7V	8" HEADER VALVE	21V	2" HERMETIC GAUGE
8V	8" VENT STACK VALVE	38V	8" VAPOR PENETRATION (⊙)
10V	8" HIGH LEVEL/OVERFILL ALARM	39V	6" PRESS/VAC RELIEF VALVE
11V	8" 1-METER GAUGE STICK	42V	8" ULLAGE HATCH
12V	2" HERMETIC SAMPLE	46V	2" SOUNDING TUBE
14V	8" SIGHT GLASS	50V	8" VAPOR HEADER
15V	2" INSPECTION PORT	51V	8" VAPOR PIPELINE
16V	8" VAPOR VENT STACK	—	ABOVE DECK PIPING
17V	20" BUTTERWORTH		

NOTE 1: CONTAINMENT P/S

NOTE 2: RIGGING IS TYPICAL IN EACH TANK.

WEST GULF MARINE - EX: N/A

REV.	DATE	BY	CHK	APP	REVISION DESCRIPTION
1	09/30/15	BB	SC		REVISED PER CLIENT COMMENTS
0	11/23/09	RB	RB	OF	APPROVED

KIRBY INLAND MARINE 

**VAPOR
PIPING FLOW DIAGRAM**

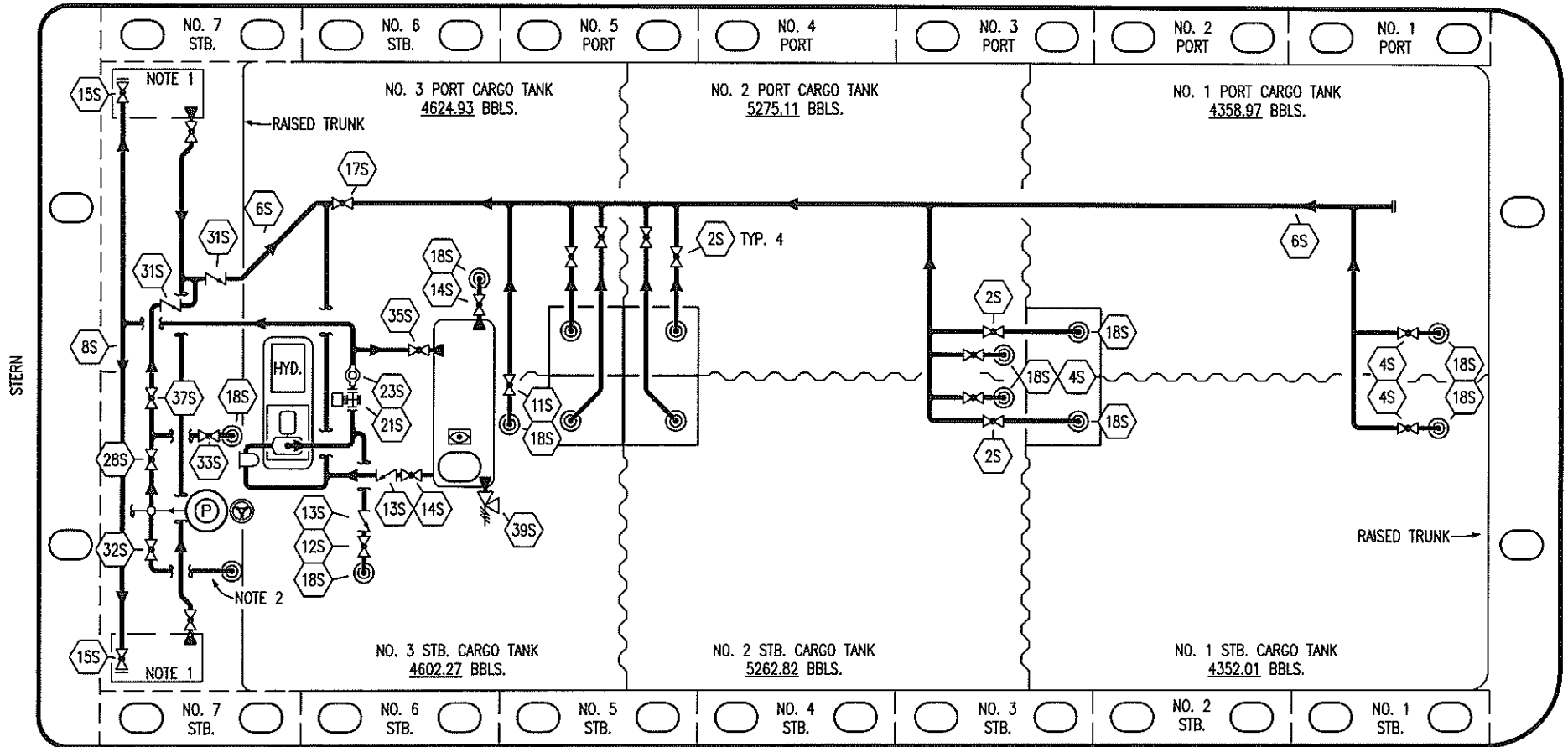
SCALE: NONE

PAGE: 2 OF 3

KIRBY 28021

REV. **1**

PORT



NO	DESCRIPTION	NO	DESCRIPTION
1S	3000 GAL. SLOP TANK	17S	FORWARD CARGO TANK ISOLATION
2S	CARGO SUMP SUCTION VALVE	18S	STRIPPING DROP
4S	CARGO TANK SUCTION VALVE	21S	PRIMING POT
5S	SLOP TANK SUCTION VALVE	22S	STRIPPING PUMP
6S	SUCTION HEADER PIPING	23S	2" PIPE SIGHT GLASS
8S	DISCHARGE HEADER PIPING	24S	BASKET STRAINER
11S	LOWER CARGO PIPELINE SUCTION VALVE	28S	CARGO PIPING SUCTION
12S	RETURN TO CARGO TANK VALVE	31S	CHECK VALVE
13S	RETURN TO CARGO CHECK VALVE	32S	PUMP WELL PRIMER VALVE
14S	DISCHARGE VALVE	33S	PUMP WELL SUCTION VALVE
15S	HEADER DISCHARGE VALVE	35S	STRIPPING VALVE

NO	DESCRIPTION
37S	BLOCK VALVE
39S	P/V VALVE
42S	SLOP TANK FILL VALVE
43S	DRIP PAN SUCTION VALVE

— ABOVE DECK PIPING

STARBOARD

NOTE 1: CONTAINMENT P/S

NOTE 2: 28S & 32S CONNECT TO 8" CARGO PUMP DISCHARGE PIPING.

WEST GULF MARINE -- EX: N/A

REV.	DATE	BY	CHK	APP	REVISION DESCRIPTION
1	09/30/15	BB	SC		REVISED PER CLIENT COMMENTS
0	11/23/09	RB	RB	OF	APPROVED

KIRBY INLAND MARINE

**STRIPPING
PIPING FLOW DIAGRAM**

SCALE: NONE	KIRBY 28021	REV. 1
PAGE: 3 OF 3		