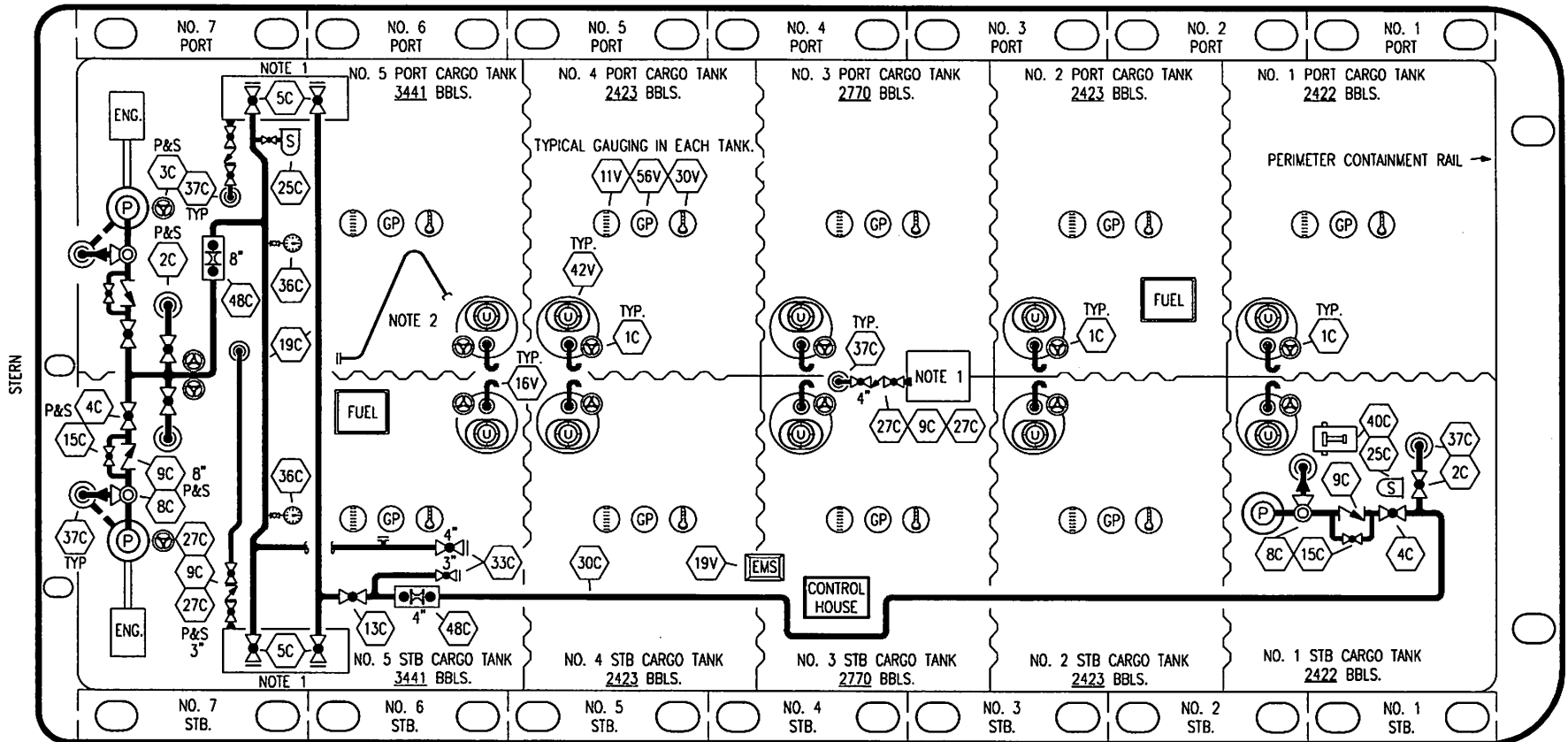


PORT



NO	DESCRIPTION
1C	8" CARGO TANK VALVE
2C	8" LOAD VALVE
3C	8" MASTER SUCTION VALVE
4C	8" DISCHARGE VALVE
5C	8" HEADER VALVE
8C	6" RELIEF VALVE
9C	CHECK VALVE
11V	1 METER STICK GAUGE
13C	4" BLOCK VALVE
15C	2" CHECK VALVE BYPASS VALVE
16V	VENT
19C	8" CARGO HEADER

NO	DESCRIPTION
19V	EMERGENCY ENGINE SHUTDOWN
25C	SAMPLE POT & ISOLATION VALVE
27C	3" CONTAIMENT DRAIN VALVE(S)
30C	4" CARGO PIPELINE
30V	THERMAL WELL
33C	HOSE CONNECTION VALVE
36C	PRESSURE GAUGE
37C	CARGO DROP
42V	ULLAGE
48C	FLOW METER
40C	STRIPPING UNIT
56V	GAUGE POINT

STARBOARD

— ABOVE DECK PIPING

NOTE 1: CONTAINMENT TANKS

NOTE 2: HOSE BOOM

NOTE 3: TYP.= SAME IN ALL LOCATIONS.

TRINITY MARINE - BBL. CAP.=26958

REV.	DATE	BY	CHK	APP	REVISION DESCRIPTION
2	11/24/14	DDA	DDA	DM	REVISED PER CLIENT COMMENTS
1	01/29/10	RB	RB	RJ	GENERAL MODIFICATIONS
0	08/11/09	RB	RB	AB	APPROVED

KIRBY INLAND MARINE 

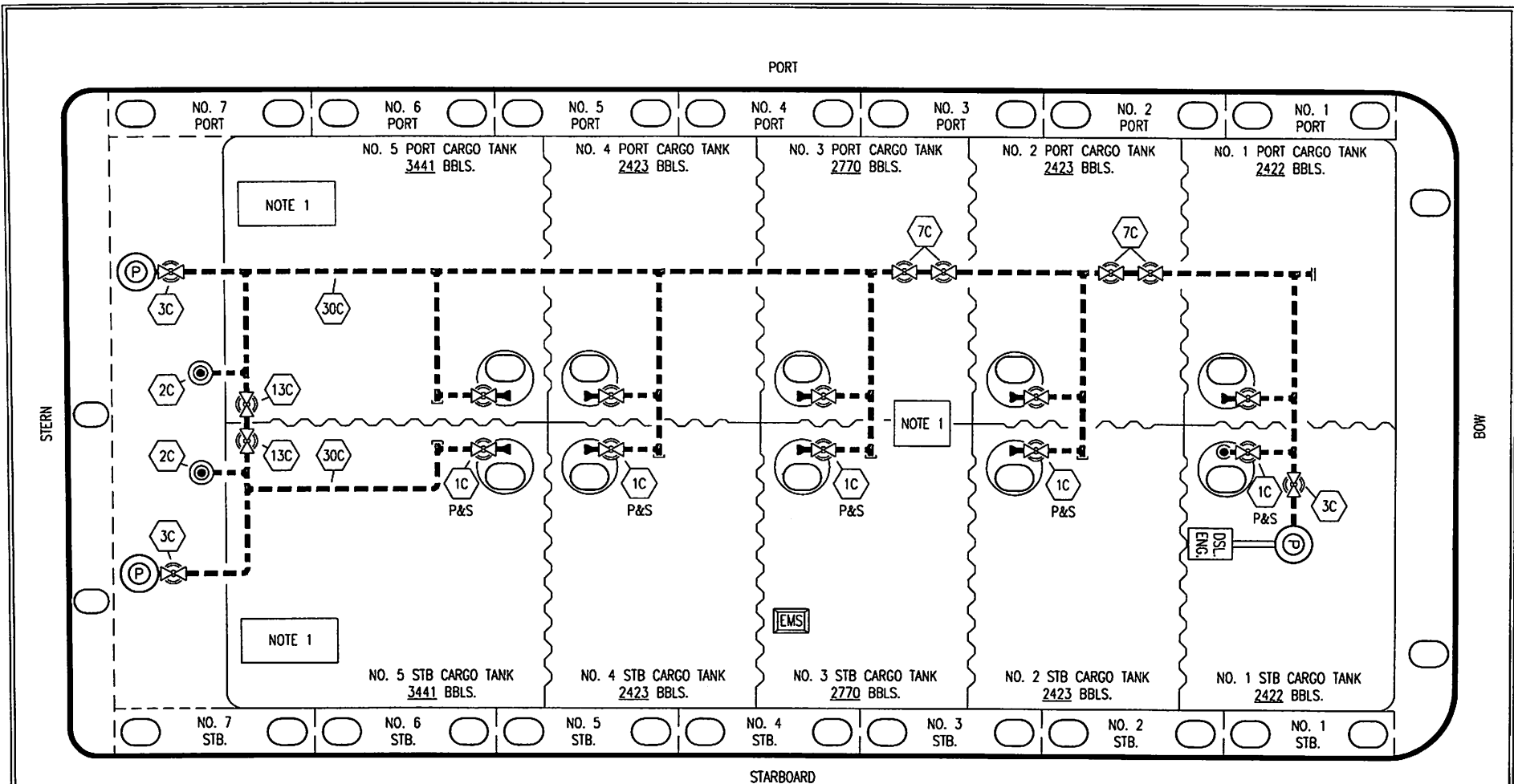
**ABOVE DECK CARGO
PIPING FLOW DIAGRAM**

SCALE: NONE

PAGE: 1 OF 2

KIRBY 27774

REV. **2**



- | | |
|-----|-------------------------|
| NO | DESCRIPTION |
| 1C | 8" CARGO TANK VALVE |
| 2C | 8" CARGO LOAD DROP |
| 3C | 8" MASTER SUCTION VALVE |
| 7C | BLOCK VALVE |
| 13C | 8" BLOCK VALVE |
| 30C | 8" CARGO PIPELINE |
| --- | BELOW DECK PIPING |

NOTE 1: CONTAINMENT

TRINITY MARINE - BBL. CAP.=26958

REV.	DATE	BY	CHK	APP	REVISION DESCRIPTION
3	11/24/14	DDA	DDA	DM	REVISED PER CLIENT COMMENTS
2	08/31/10	RB	OF	OF	MOVE 13C LOAD VALVES
1	01/29/10	RB	RB	RJ	GENERAL MODIFICATIONS
0	08/11/09	RB	RB	AB	APPROVED

KIRBY INLAND MARINE 

**BELOW DECK CARGO
PIPING FLOW DIAGRAM**

SCALE: NONE
PAGE: 2 OF 2

KIRBY 27774

REV. **3**