

NO	SIZE	DESCRIPTION	NO	SIZE	DESCRIPTION
7V	8"	HEADER VALVE	24V	6"	PRESSURE RELIEF VALVE
8V	8"	VENT STACK VALVE	30V	2"	THERMAL WELL WITH PIPE CAP
11V		GAUGE STICK (LENGTH)			
14V		SIGHT GLASS			
15V		INSPECTION PORT			
16V	8"	VAPOR VENT STACK			
18V		OPEN GAUGE TUBE			
19V		EMERGENCY SHUTDOWN SYSTEM			
23V		PRESSURE GAUGE			

NOTE 1: DEEPWELL PUMP
 NOTE 2: 6 BARREL DRIP PAN
 ABOVE DECK PIPING ———

REV.	DATE	BY	CHK	APP	REVISION DESCRIPTION
1	07/02/18	WFB	DDA		REVISED PER CLIENT COMMENTS
0	05/18/11	JN	DDA		ISSUED FOR APPROVAL

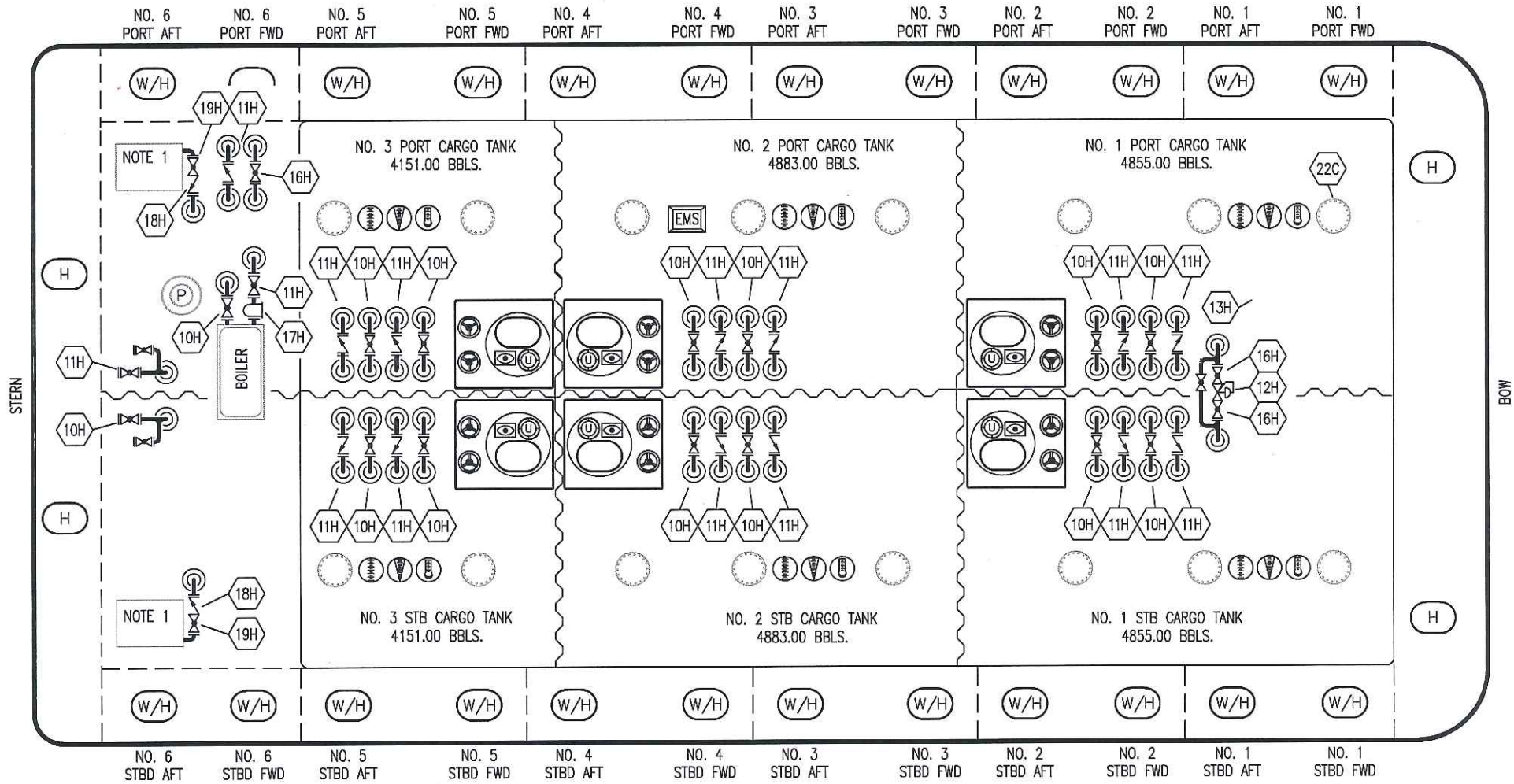


KIRBY INLAND MARINE

VAPOR

PIPING FLOW DIAGRAM

SCALE: NONE	KIRBY 27768
PAGE: 2 OF 3	REV. 1



- | NO | DESCRIPTION |
|---------------------|----------------------|
| 10H | SUPPLY VALVE |
| 11H | RETURN |
| 12H | PRESSURE REGULATOR |
| 13H | BY-PASS |
| 16H | ISOLATION VALVE |
| 17H | BASKET STRAINER |
| 18H | CHECK VALVE |
| 19H | DRIP PAN DRAIN VALVE |
| — ABOVE DECK PIPING | |

NOTE 1: 6 BARREL DRIP PAN

TRINITY MARINE

REV.	DATE	BY	CHK	APP	REVISION DESCRIPTION
0	05/18/11	JN	DDA		ISSUED FOR APPROVAL

KIRBY INLAND MARINE	
HOT OIL PIPING FLOW DIAGRAM	
SCALE: NONE PAGE: 3 of 3	KIRBY 27768
	REV. 0