

TRINITY MARINE

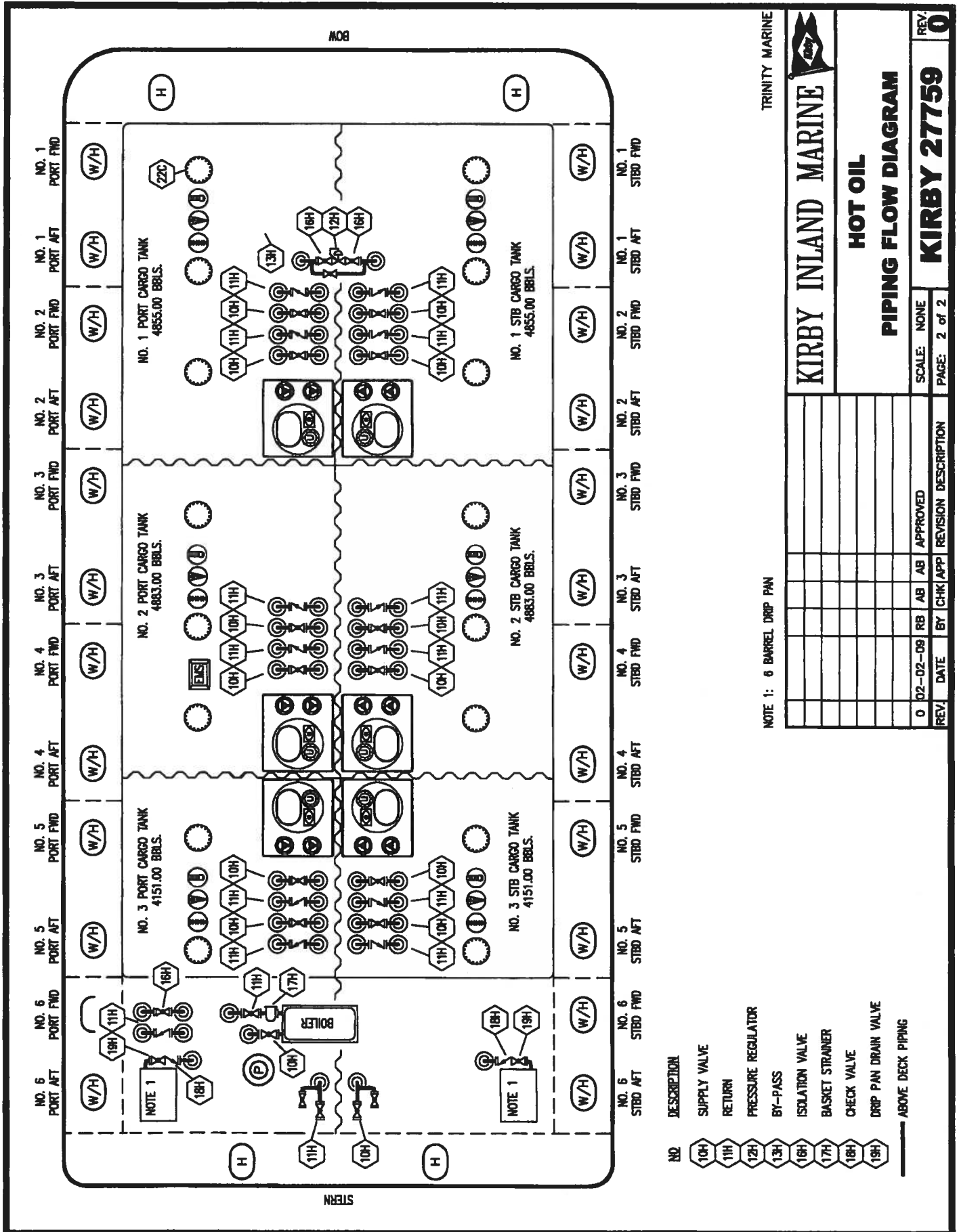
KIRBY INLAND MARINE

CARGO
PIPING FLOW DIAGRAM
 SCALE: NONE
 PAGE: 1 OF 2
 REV. 0

NOTE 1: DEEPWELL PUMP
 NOTE 2: 6 BARREL DRIP PAN
 ABOVE DECK PIPING ———
 BELOW DECK PIPING - - - -

NO	SIZE	DESCRIPTION
1C	8"	CARGO TANK VALVE
2C	8"	LOAD VALVE
3C	10"	MASTER SUCTION VALVE
4C	8"	DISCHARGE VALVE
5C	8"	HEADER VALVE
6C	8"	SALVAGE VALVE
8C	6"	RELIEF VALVE
9C		CHECK VALVE
15C	2"	BYPASS VALVE (AROUND CHECK VALVE)
16C		DISCHARGE PRESSURE GAUGE
19C		CARGO HEADER
27C	8"	BUTTERWORTH
28C	19"	ECCENTRIC REDUCER
29C	10" x 8"	DRIP PAN DRAIN VALVE
30V	6"	HIGH LOAD VALVE
		GAUGE STICK (LENGTH)
		RESTRICTIVE GAUGE TUBE
		THERMAL WELL
		WITH PIPE CAP
19C		APPROVED
27C		REVISED
28C		LEGEND/TAGS
29C		ISSUED FOR REVIEW
30V		BY CHK APP
		REVISION DESCRIPTION

NO. 6 STBD AFT NO. 5 STBD AFT NO. 4 STBD AFT NO. 3 STBD AFT NO. 2 STBD AFT NO. 1 STBD AFT NO. 6 PORT FWD NO. 5 PORT FWD NO. 4 PORT FWD NO. 3 PORT FWD NO. 2 PORT FWD NO. 1 PORT FWD



TRINITY MARINE



KIRBY INLAND MARINE

HOT OIL

PIPING FLOW DIAGRAM

REV. **0**

KIRBY 27759

SCALE: NONE
PAGE: 2 of 2

NOTE 1: 6 BARREL DRIP PAN

REV	DATE	BY	CHK/APP	REVISION DESCRIPTION
0	02-02-09	RB	AB	APPROVED

NO. DESCRIPTION

10H SUPPLY VALVE

11H RETURN

12H PRESSURE REGULATOR

13H BY-PASS

16H ISOLATION VALVE

17H BASKET STRAINER

18H CHECK VALVE

19H DRIP PAN DRAIN VALVE

— ABOVE DECK PIPING