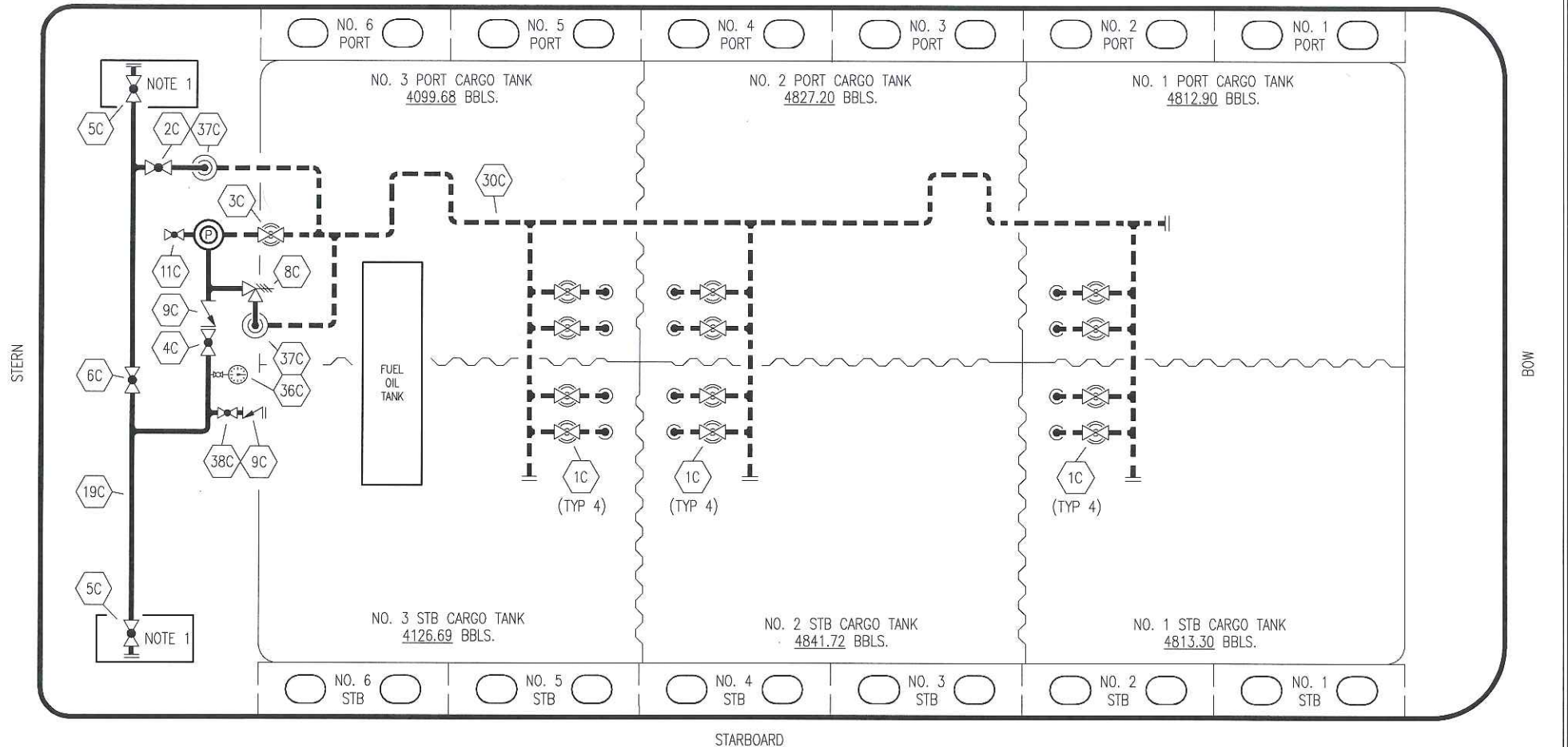


PORT



- | | | | |
|-----|----------------------|-----|-----------------------|
| NO | DESCRIPTION | NO | DESCRIPTION |
| 1C | CARGO TANK VALVE | 30C | CARGO PIPELINE |
| 2C | LOAD VALVE | 36C | PRESSURE GAUGE |
| 3C | MASTER SUCTION VALVE | 37C | CARGO DROP |
| 4C | DISCHARGE VALVE | 38C | VALVE |
| 5C | HEADER VALVE | — | — ABOVE DECK PIPING |
| 6C | SALVAGE VALVE | --- | --- BELOW DECK PIPING |
| 8C | RELIEF VALVE | | |
| 9C | CHECK VALVE | | |
| 11C | BLEED OFF VALVE | | |
| 19C | CARGO HEADER | | |

NOTE 1: CONTAINMENT P/S

TRINITY MARINE

REV.	DATE	BY	CHK	APP	REVISION DESCRIPTION
2	12/03/18	MRV	DDA	OF	ADDED HOT OIL DIAGRAM
1	09/13/16	MRV	WFB		REVISED PER CLIENT COMMENTS
0	06/22/09	RB	FP	OF	APPROVED

KIRBY INLAND MARINE 

**CARGO
PIPING FLOW DIAGRAM**

SCALE: NONE

KIRBY 27723

PAGE: 1 OF 2

REV. **2**

