

NO	SIZE	DESCRIPTION	NO	SIZE	DESCRIPTION
1C		CARGO TANK VALVE	30C		CARGO PIPELINE
2C		LOAD VALVE	36C		PRESSURE GAUGE
3C		MASTER SUCTION VALVE	37C		CARGO DROP
4C		DISCHARGE VALVE	38C		VALVE
5C		HEADER VALVE	---		ABOVE DECK PIPING
6C		SALVAGE VALVE	---		BELOW DECK PIPING
8C		RELIEF VALVE			
9C		CHECK VALVE			
11C		BLEED OFF VALVE			
19C		CARGO HEADER			

NOTE 1: CONTAINMENT PORT & STB.

TRINITY MARINE

REV.	DATE	BY	CHK	APP	REVISION DESCRIPTION
1	12/03/18	MRV	DDA	OF	ADDED HOT OIL DIAGRAM
0	02/30/09	WK	RB	OF	APPROVED

KIRBY INLAND MARINE

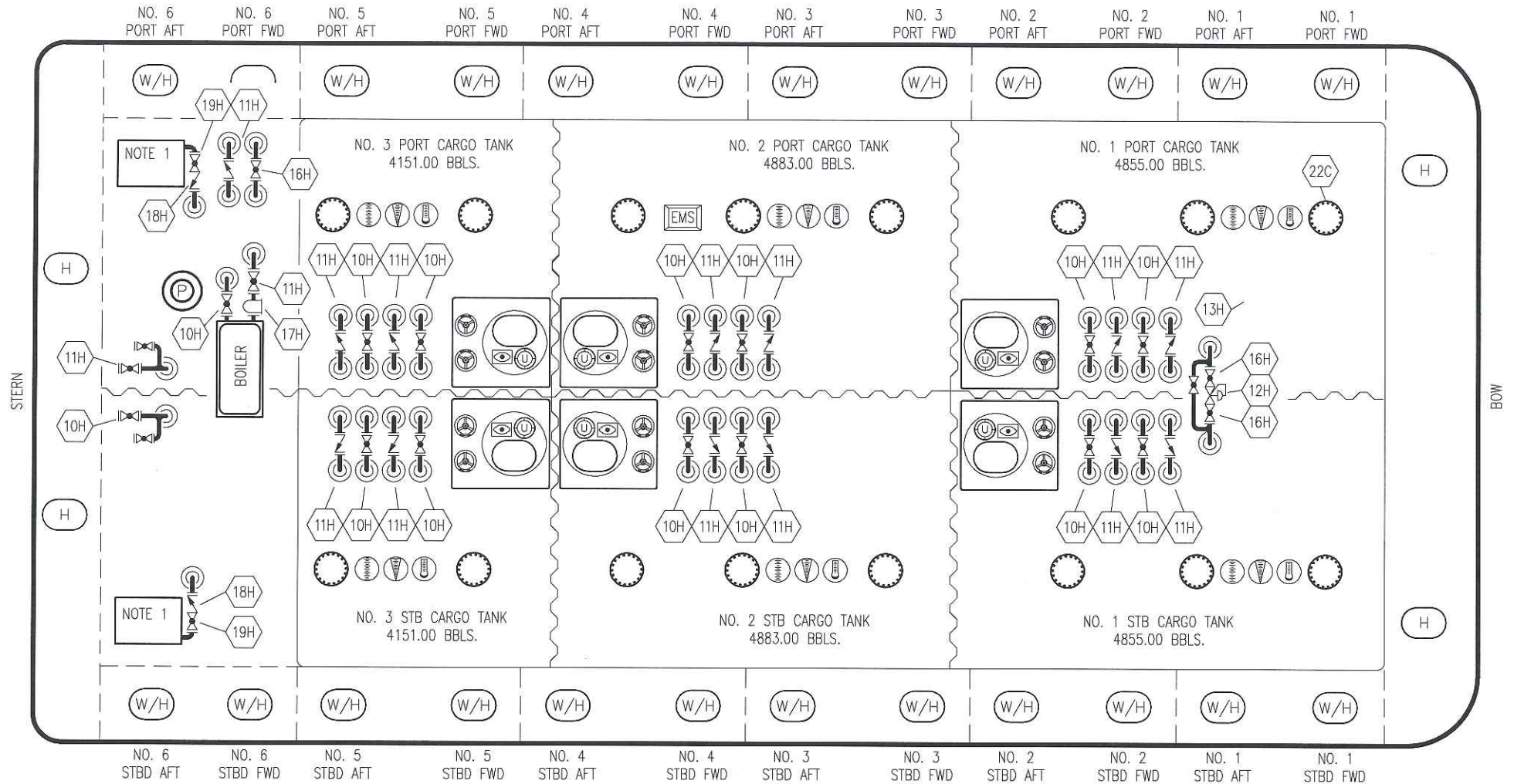
**CARGO
PIPING FLOW DIAGRAM**

SCALE: NONE

PAGE: 1 OF 2

KIRBY 27714

REV. **1**



NO. 6 PORT AFT NO. 6 PORT FWD NO. 5 PORT AFT NO. 5 PORT FWD NO. 4 PORT AFT NO. 4 PORT FWD NO. 3 PORT AFT NO. 3 PORT FWD NO. 2 PORT AFT NO. 2 PORT FWD NO. 1 PORT AFT NO. 1 PORT FWD

NO. 6 STBD AFT NO. 6 STBD FWD NO. 5 STBD AFT NO. 5 STBD FWD NO. 4 STBD AFT NO. 4 STBD FWD NO. 3 STBD AFT NO. 3 STBD FWD NO. 2 STBD AFT NO. 2 STBD FWD NO. 1 STBD AFT NO. 1 STBD FWD

- | NO | DESCRIPTION |
|-----|----------------------|
| 10H | SUPPLY VALVE |
| 11H | RETURN |
| 12H | PRESSURE REGULATOR |
| 13H | BY-PASS |
| 16H | ISOLATION VALVE |
| 17H | BASKET STRAINER |
| 18H | CHECK VALVE |
| 19H | DRIP PAN DRAIN VALVE |
- ABOVE DECK PIPING

NOTE 1: 6 BARREL DRIP PAN

TRINITY MARINE

REV.	DATE	BY	CHK	APP	REVISION DESCRIPTION
0	12/03/18	MRV	DDA	OF	ISSUED FOR APPROVAL

<p>KIRBY INLAND MARINE </p> <p>HOT OIL</p> <p>PIPING FLOW DIAGRAM</p>		SCALE: NONE	<p>KIRBY 27714</p>
		PAGE: 2 of 2	