

NO	DESCRIPTION	NO	DESCRIPTION
1C	CARGO TANK VALVE	30C	CARGO PIPELINE
2C	LOAD VALVE	36C	PRESSURE GAUGE
3C	MASTER SUCTION VALVE	37C	CARGO DROP
4C	DISCHARGE VALVE	38C	VALVE
5C	HEADER VALVE	—	— ABOVE DECK PIPING
6C	SALVAGE VALVE	---	--- BELOW DECK PIPING
8C	RELIEF VALVE		
9C	CHECK VALVE		
11C	BLEED OFF VALVE		
19C	CARGO HEADER		

NOTE 1: CONTAINMENT PORT & STB.

TRINITY MARINE

1	12/03/18	MRV	DDA	OF	ADDED HOT OIL DIAGRAM
0	05/03/09	WK	RB	OF	APPROVED
REV.	DATE	BY	CHK	APP	REVISION DESCRIPTION

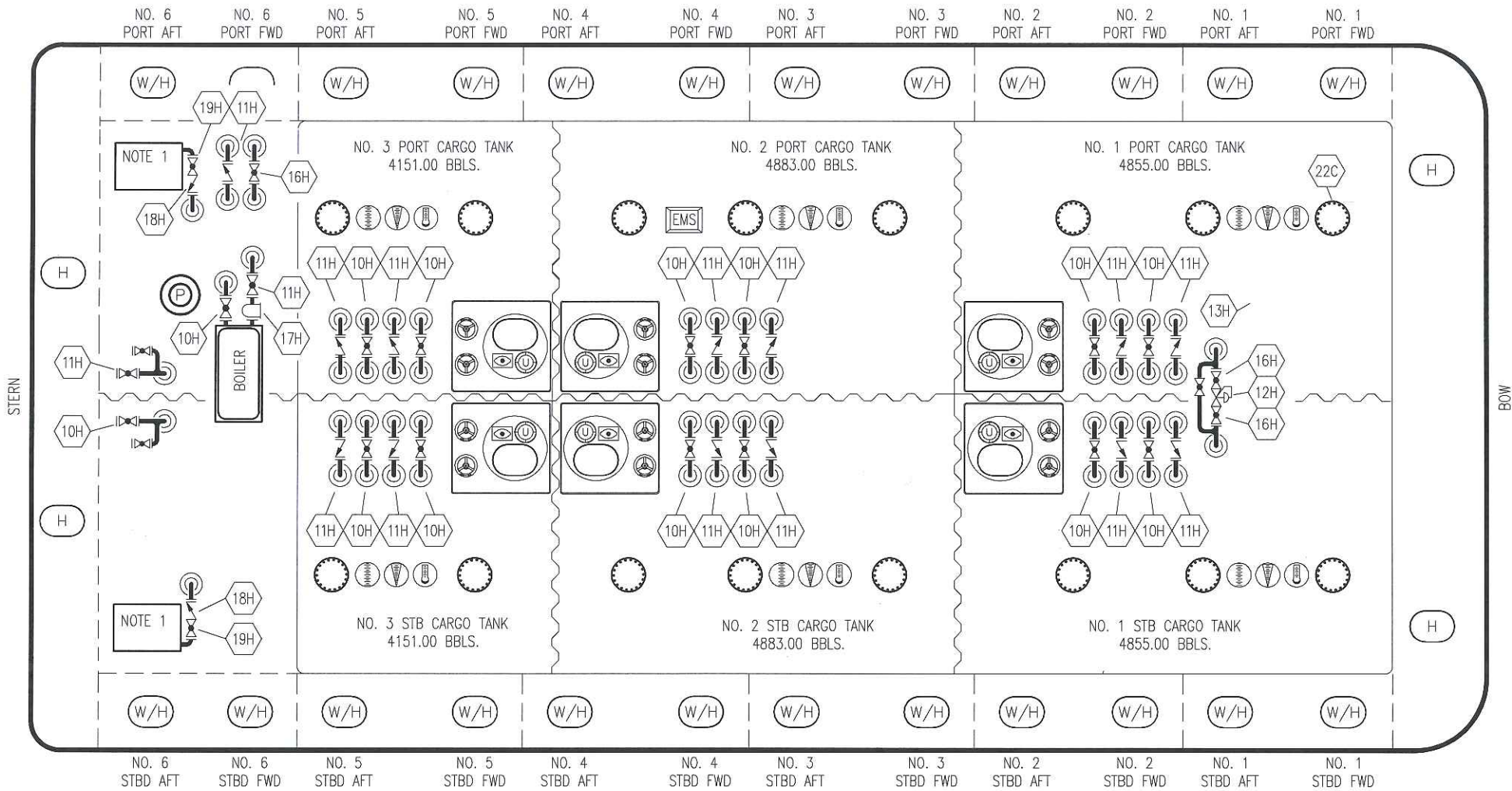
KIRBY INLAND MARINE

**CARGO
PIPING FLOW DIAGRAM**

SCALE: NONE
PAGE: 1 OF 2

KIRBY 27711

REV. **1**



- | | |
|-----|----------------------|
| NO | DESCRIPTION |
| 10H | SUPPLY VALVE |
| 11H | RETURN |
| 12H | PRESSURE REGULATOR |
| 13H | BY-PASS |
| 16H | ISOLATION VALVE |
| 17H | BASKET STRAINER |
| 18H | CHECK VALVE |
| 19H | DRIP PAN DRAIN VALVE |

— ABOVE DECK PIPING

NOTE 1: 6 BARREL DRIP PAN

TRINITY MARINE

0	12/03/18	MRV	DDA	OF	ISSUED FOR APPROVAL
REV.	DATE	BY	CHK	APP	REVISION DESCRIPTION

KIRBY INLAND MARINE 

**HOT OIL
PIPING FLOW DIAGRAM**

SCALE: NONE
PAGE: 2 of 2

KIRBY 27711

REV. **0**