

NO	DESCRIPTION
1C	CARGO TANK VALVE
1Ca	HIGH SUCTION
2C	LOAD VALVE
3C	MASTER SUCTION VALVE
4C	DISCHARGE VALVE
5C	HEADER VALVE
6C	SALVAGE VALVE
8C	RELIEF VALVE
9C	CHECK VALVE
19C	CARGO HEADER
26C	DRAIN VALVE

NO	DESCRIPTION
30C	CARGO PIPELINE
31C	BYPASS VALVE
36C	PRESSURE GAUGE
37C	CARGO DROP
38C	VALVE DEEP WELL DRAIN
—	— ABOVE DECK PIPING
- - -	- - - BELOW DECK PIPING

TRINITY MADISONVILLE -- EX: HW 2710

REV.	DATE	BY	CHK	APP	REVISION DESCRIPTION
2	08/27/19	MRV	DDA		REVISED PER CLIENT COMMENTS
1	05/27/09	WK	RB	BR	ADD 1CA, 8C, 9C
0	03/02/09	WK	RB	OF	APPROVED

KIRBY INLAND MARINE 

**CARGO
PIPING FLOW DIAGRAM**

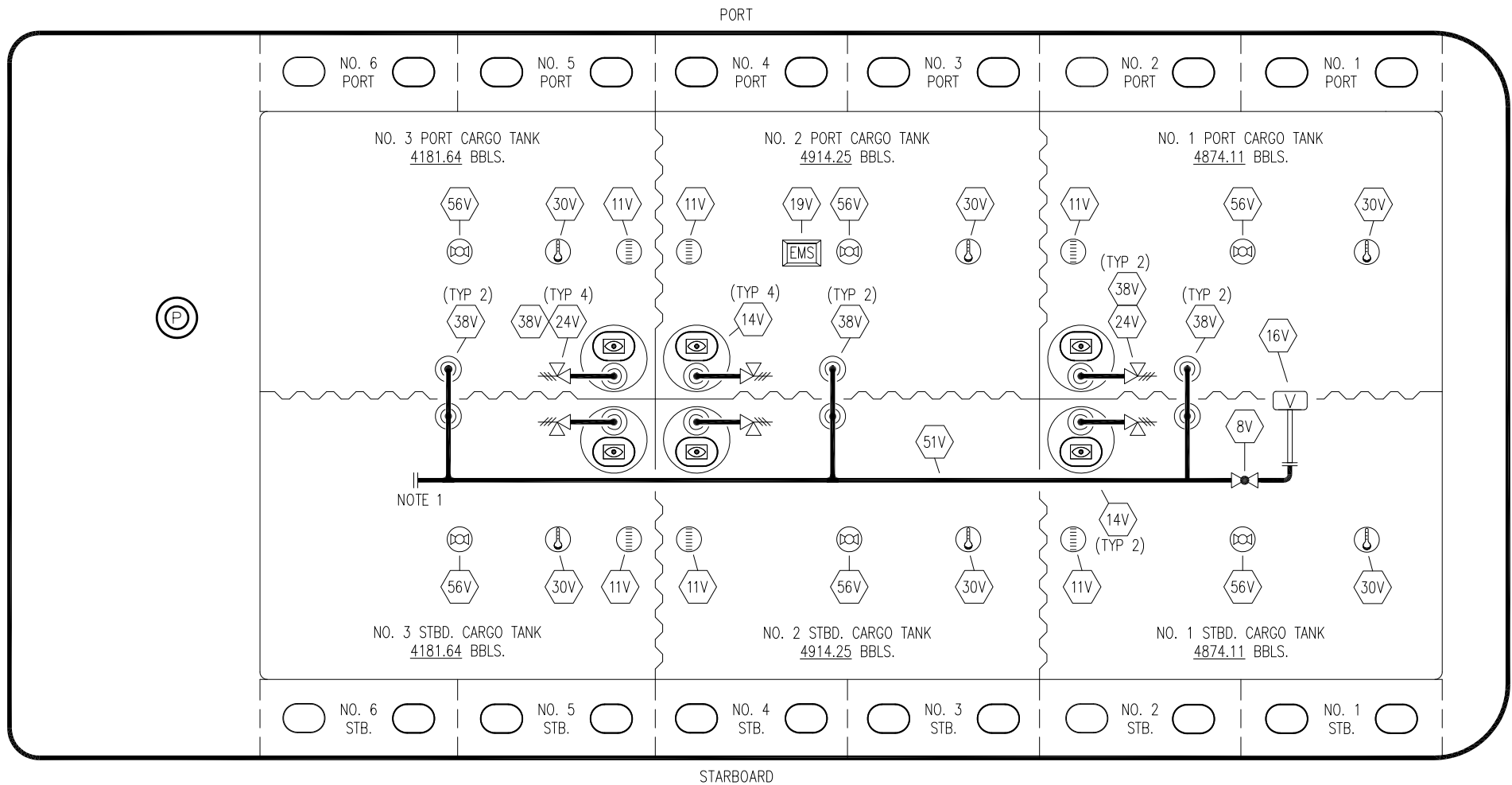
SCALE: NONE
PAGE: 1 OF 3

KIRBY 27702

REV. **2**

STERN

BOW



PORT

STARBOARD

NO	SIZE	DESCRIPTION
8V	8"	VENT STACK VALVE
11V	8"	1 METER GAUGE STICK
14V		SIGHT GLASS
16V	8"	VAPOR VENT STACK
19V		EMERGENCY ENGINE SHUTDOWN
30V		THERMAL WELL
24V		PRESSURE RELIEF VALVE
38V		VAPOR DROP
51V		VAPOR PIPELINE
56V		GAUGE POINT
—		ABOVE DECK PIPING

NOTE 1: SPECIAL VAPOR FLANGE

TRINITY MADISONVILLE -- EX: HW 2710

REV.	DATE	BY	CHK	APP	REVISION DESCRIPTION
2	08/27/19	MRV	DDA		REVISED PER CLIENT COMMENTS
1	05/27/09	WK	RB	BR	UPDATED 11V, 30V 56V
0	03/02/09	WK	RB	OF	APPROVED

KIRBY INLAND MARINE 

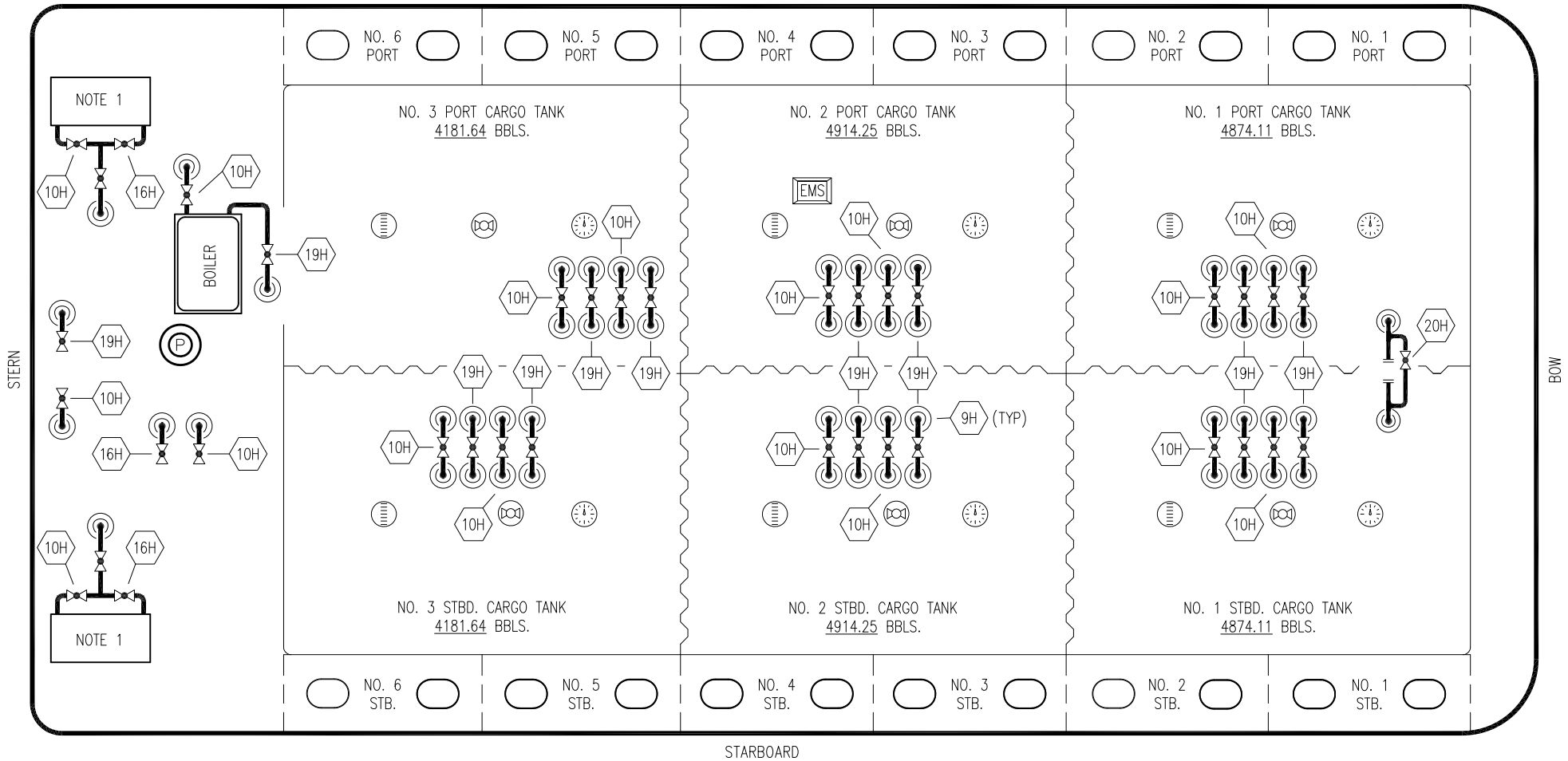
**VAPOR
PIPING FLOW DIAGRAM**

SCALE: NONE
PAGE: 2 OF 3

KIRBY 27702

REV. **2**

PORT



NO SIZE DESCRIPTION

- 9H HOT OIL DROP
- 10H SUPPLY VALVE
- 16H ISOLATION VALVE
- 19H RETURN VALVE
- 20H BYPASS VALVE

— ABOVE DECK PIPING

NOTE 1: DRIP PAN

TRINITY MADISONVILLE -- EX: HW 2710

REV.	DATE	BY	CHK	APP	REVISION DESCRIPTION
1	08/27/19	MRV	DDA		REVISED PER CLIENT COMMENTS
0	03/02/09	WK	RB	OF	APPROVED

KIRBY INLAND MARINE

HOT OIL
PIPING FLOW DIAGRAM

KIRBY 27702

REV. 1

SCALE: NONE
PAGE: 3 OF 3