


NO	DESCRIPTION	NO	DESCRIPTION
1C	CARGO TANK VALVE	19C	CARGO HEADER
2C	LOAD VALVE	20C	DUMMY HEADER PIPING
3C	MASTER SUCTION VALVE	21C	DUMMY HEADER VALVE
4C	DISCHARGE VALVE	30C	CARGO PIPELINE
5C	HEADER VALVE	37C	CARGO DROP
8C	RELIEF VALVE	43S	STERN HEADER VALVE
9C	CHECK VALVE	—	ABOVE DECK PIPING
13C	CARGO PIPING BLOCK VALVE	- - -	BELOW DECK PIPING

NOTE 1: CONTAINMENT P/S

EX: CTCO 342

REV.	DATE	BY	CHK	APP	REVISION DESCRIPTION
1	08/30/23	MRV	DDA	RM	REVISED BARGE NAME
0	02/20/19	MRV	DDA		ISSUED FOR APPROVAL



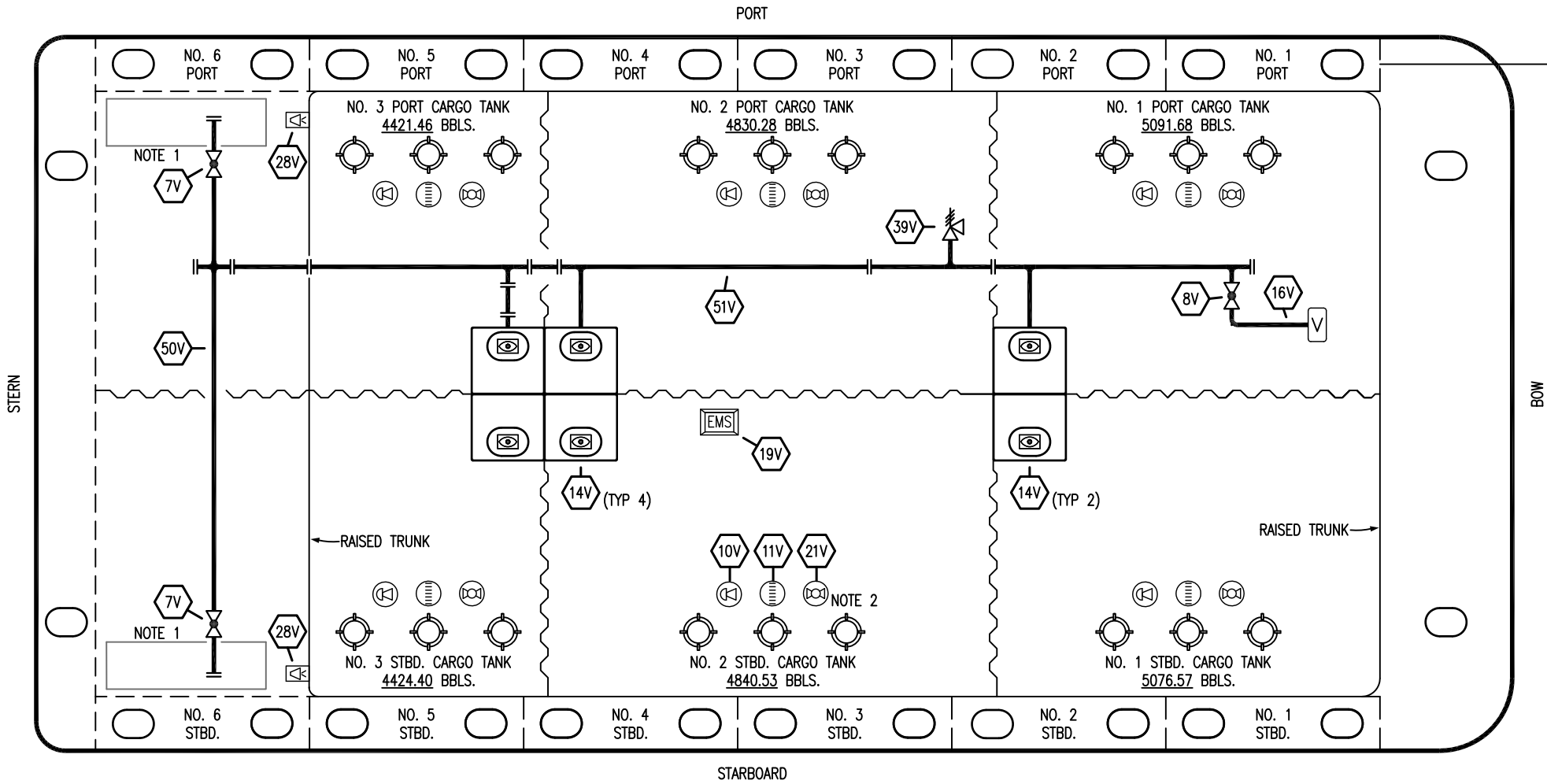
KIRBY INLAND MARINE

CARGO

PIPING FLOW DIAGRAM

KIRBY 27313

SCALE: NONE	REV. 1
PAGE: 1 OF 3	



- | | | | |
|-----|---------------------------|-----|----------------------------|
| NO | DESCRIPTION | NO | DESCRIPTION |
| 7V | HEADER VALVE | 19V | EMERGENCY ENGINE SHUT DOWN |
| 8V | VENT STACK VALVE | 21V | HERMETIC GAUGE |
| 10V | HIGH LEVEL/OVERFILL ALARM | 28V | DOCK CONNECTION ALARM |
| 11V | 1-METER GAUGE STICK | 50V | VAPOR HEADER |
| 14V | SIGHT GLASS | 51V | VAPOR PIPELINE |
| 16V | VAPOR VENT STACK | — | ABOVE DECK PIPING |

NOTE 2: TYPICAL RIGGING IN EACH TANK
 NOTE 1: CONTAINMENT P/S

EX: CTCO 342

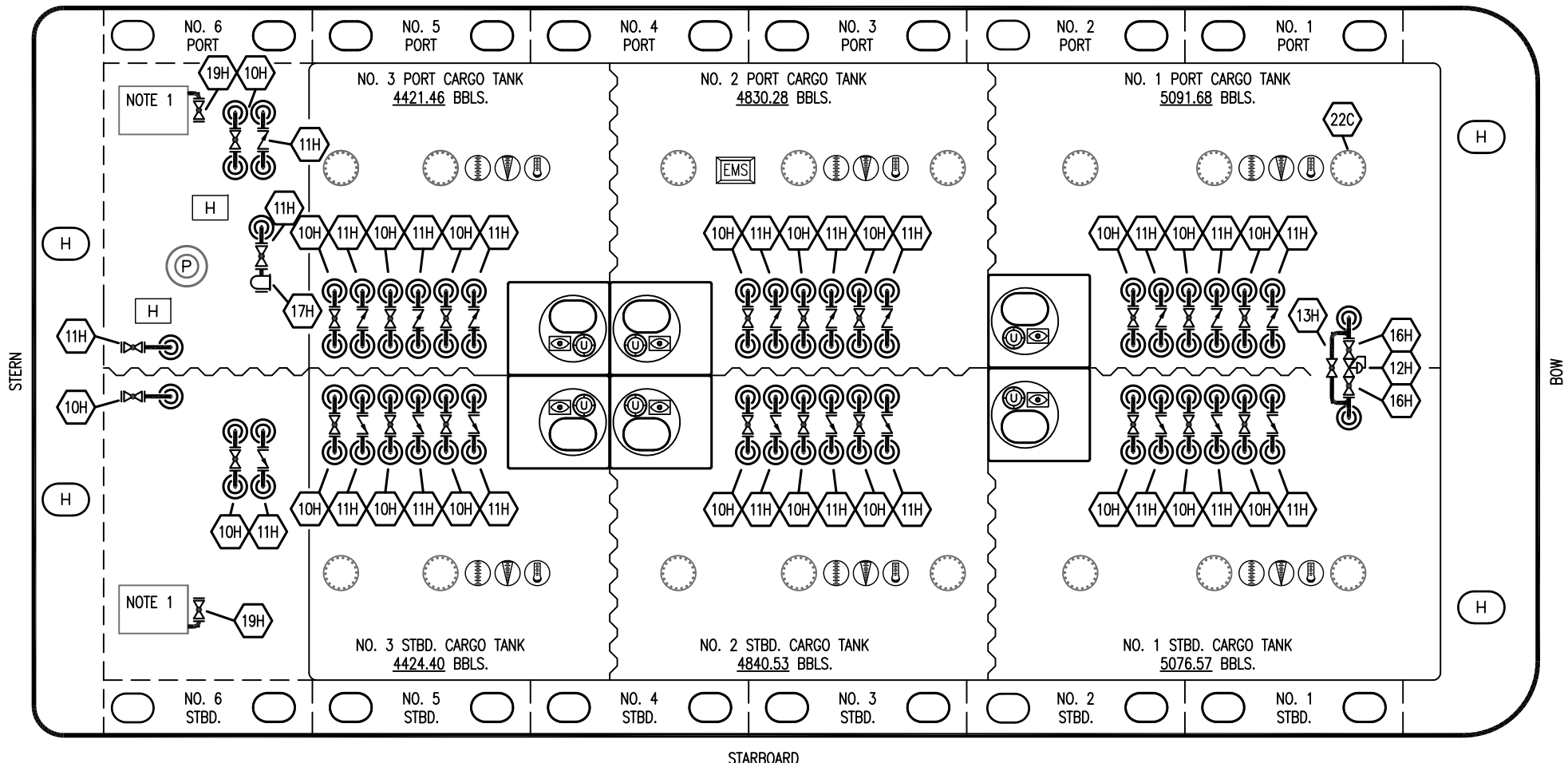
REV.	DATE	BY	CHK	APP	REVISION DESCRIPTION
1	08/30/23	MRV	DDA	RM	REVISED BARGE NAME
0	02/20/19	MRV	DDA		ISSUED FOR APPROVAL

KIRBY INLAND MARINE

VAPOR PIPING FLOW DIAGRAM

KIRBY 27313	REV. 1
SCALE: NONE	PAGE: 3 OF 3

PORT



STARBOARD

- | | |
|-----------|----------------------|
| <u>NO</u> | <u>DESCRIPTION</u> |
| 10H | SUPPLY VALVE |
| 11H | RETURN |
| 12H | PRESSURE REGULATOR |
| 13H | BY-PASS |
| 16H | ISOLATION VALVE |
| 17H | BASKET STRAINER |
| 19H | DRIP PAN DRAIN VALVE |
| — | ABOVE DECK PIPING |

NOTE 1: 6 BARREL DRIP PAN

EX: CTCO 342

1	08/30/23	MRV	DDA	RM	REVISED BARGE NAME
0	02/20/19	MRV	DDA		ISSUED FOR APPROVAL
REV.	DATE	BY	CHK	APP	REVISION DESCRIPTION

KIRBY INLAND MARINE 

**HOT OIL
PIPING FLOW DIAGRAM**

SCALE: NONE
PAGE: 2 of 3

KIRBY 27313 REV. **1**