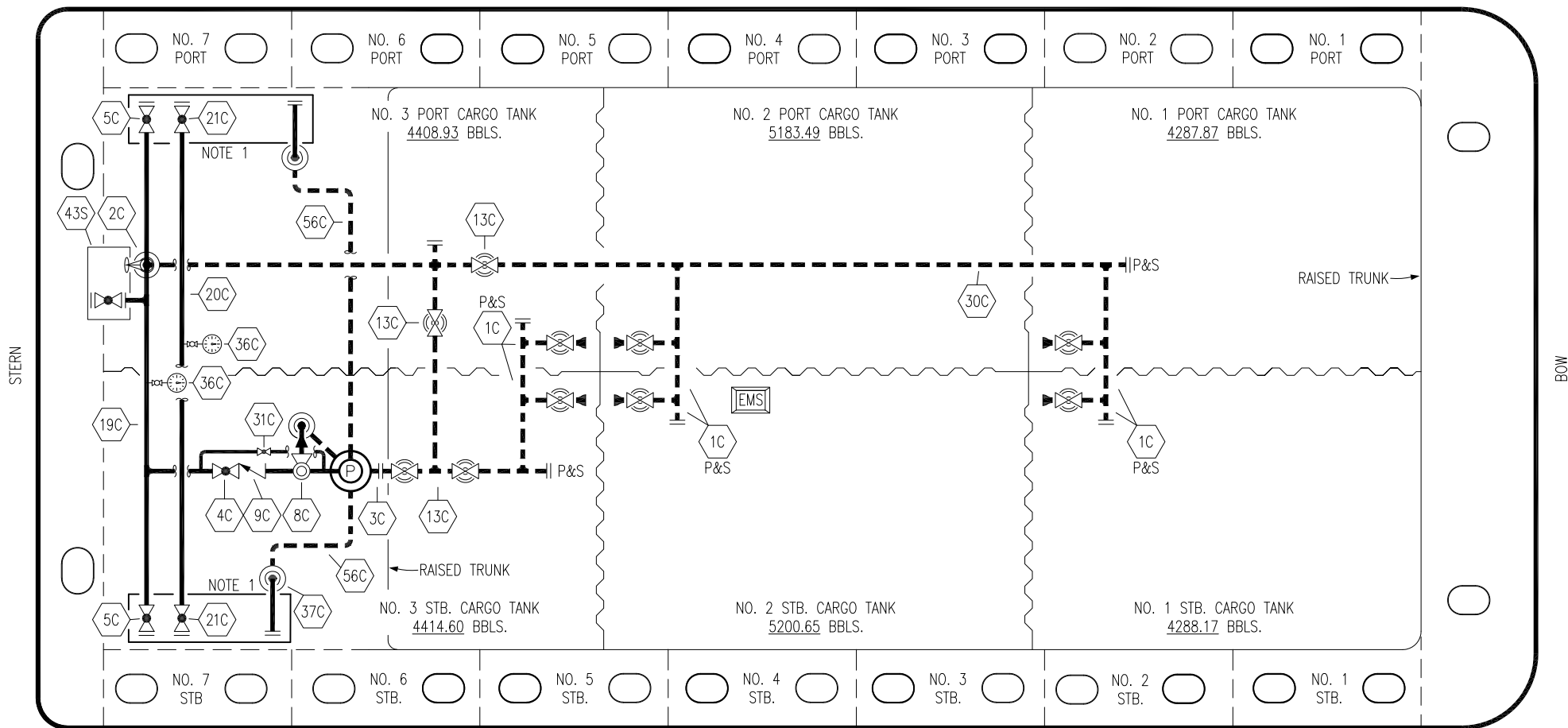



PORT



STARBOARD

NO	DESCRIPTION	NO	DESCRIPTION
1C	CARGO TANK VALVE	20C	DUMMY HEADER PIPING
2C	LOAD VALVE	21C	DUMMY HEADER VALVE
3C	MASTER SUCTION VALVE	30C	CARGO PIPELINE
4C	DISCHARGE VALVE	31C	BYPASS VALVE
5C	HEADER VALVE	36C	PRESSURE GAUGE
6C	SALVAGE VALVE	37C	CARGO DROP 
8C	RELIEF VALVE	43S	STERN HEADER VALVE
9C	CHECK VALVE	56C	SALVAGE PIPELINE
13C	CARGO PIPING BLOCK VALVE	—	— ABOVE DECK PIPING
19C	CARGO HEADER	- - -	- - - BELOW DECK PIPING

NOTE 1: CONTAINMENT P/S

WEST GULF

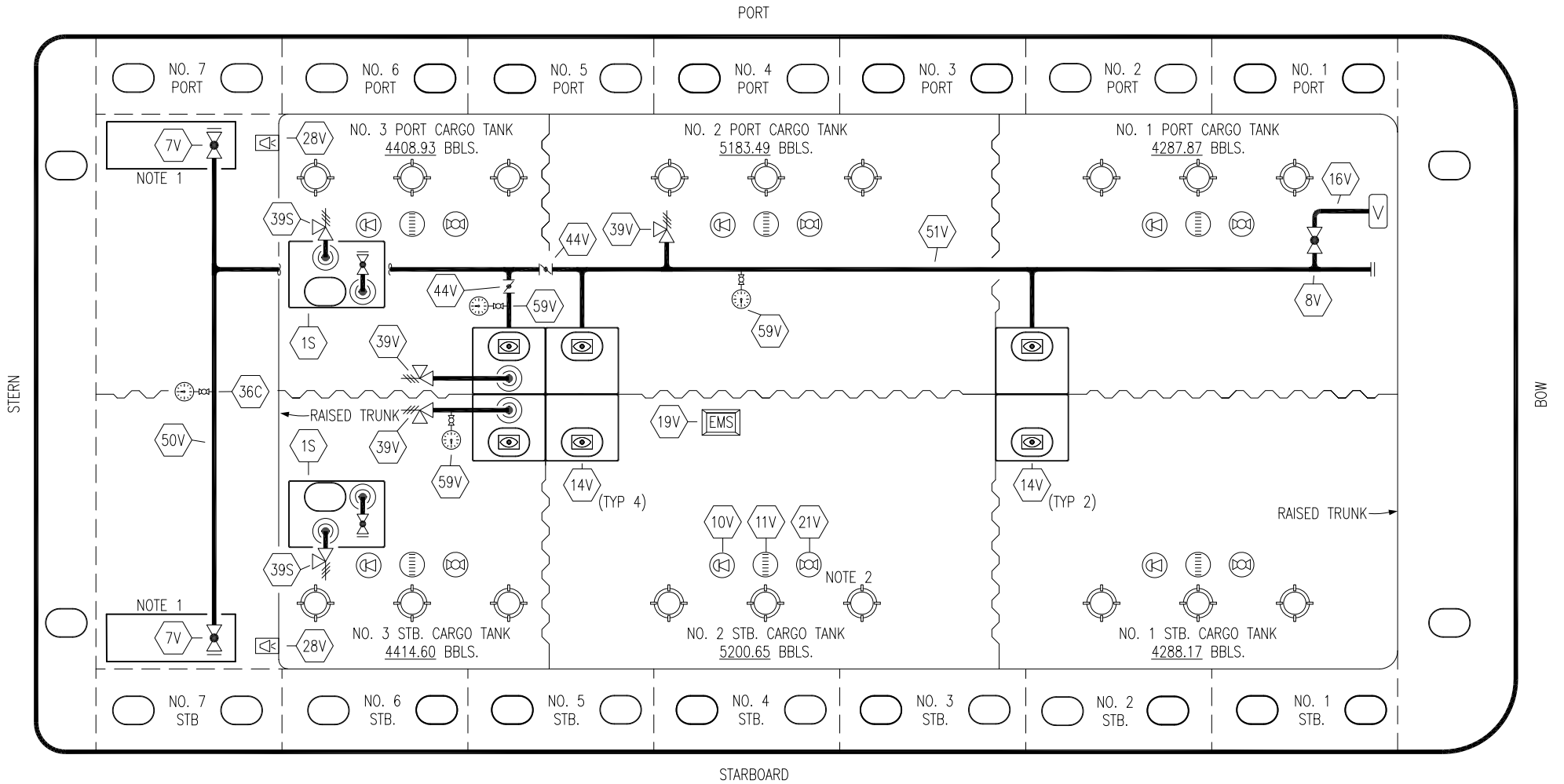
1	10/30/19	NRB	DDA		REVISED PER CLIENT COMMENTS
0	02/20/19	MRV	DDA		ISSUED FOR APPROVAL
REV.	DATE	BY	CHK	APP	REVISION DESCRIPTION

KIRBY INLAND MARINE 

CARGO

PIPING FLOW DIAGRAM

SCALE: NONE	KIRBY 27020
PAGE: 1 OF 3	REV. 1



- | | | | |
|-----|----------------------------|-----|------------------------------|
| NO | DESCRIPTION | NO | DESCRIPTION |
| 1S | SLOP TANK | 36C | PRESSURE GAUGE |
| 7V | 8" HEADER VALVE | 38V | 8" VAPOR PENETRATION (⊙) |
| 8V | 8" VENT STACK VALVE | 39V | PRESSURE/VACUUM RELIEF VALVE |
| 10V | HIGH LEVEL/OVERFILL ALARM | 39S | P/V VALVE |
| 11V | 1-METER GAUGE STICK | 44V | BUTTERFLY VALVE |
| 14V | SIGHT GLASS | 50V | 8" VAPOR HEADER |
| 16V | VAPOR VENT STACK | 51V | 8" VAPOR PIPELINE |
| 19V | EMERGENCY ENGINE SHUT DOWN | 59V | PRESS/VAC GAUGE |
| 21V | 2" HERMETIC GAUGE | — | ABOVE DECK PIPING |
| 28V | DOCK CONNECTION ALARM | | |

NOTE 2: TYPICAL RIGGING IN EACH TANK
 NOTE 1: CONTAINMENT P/S

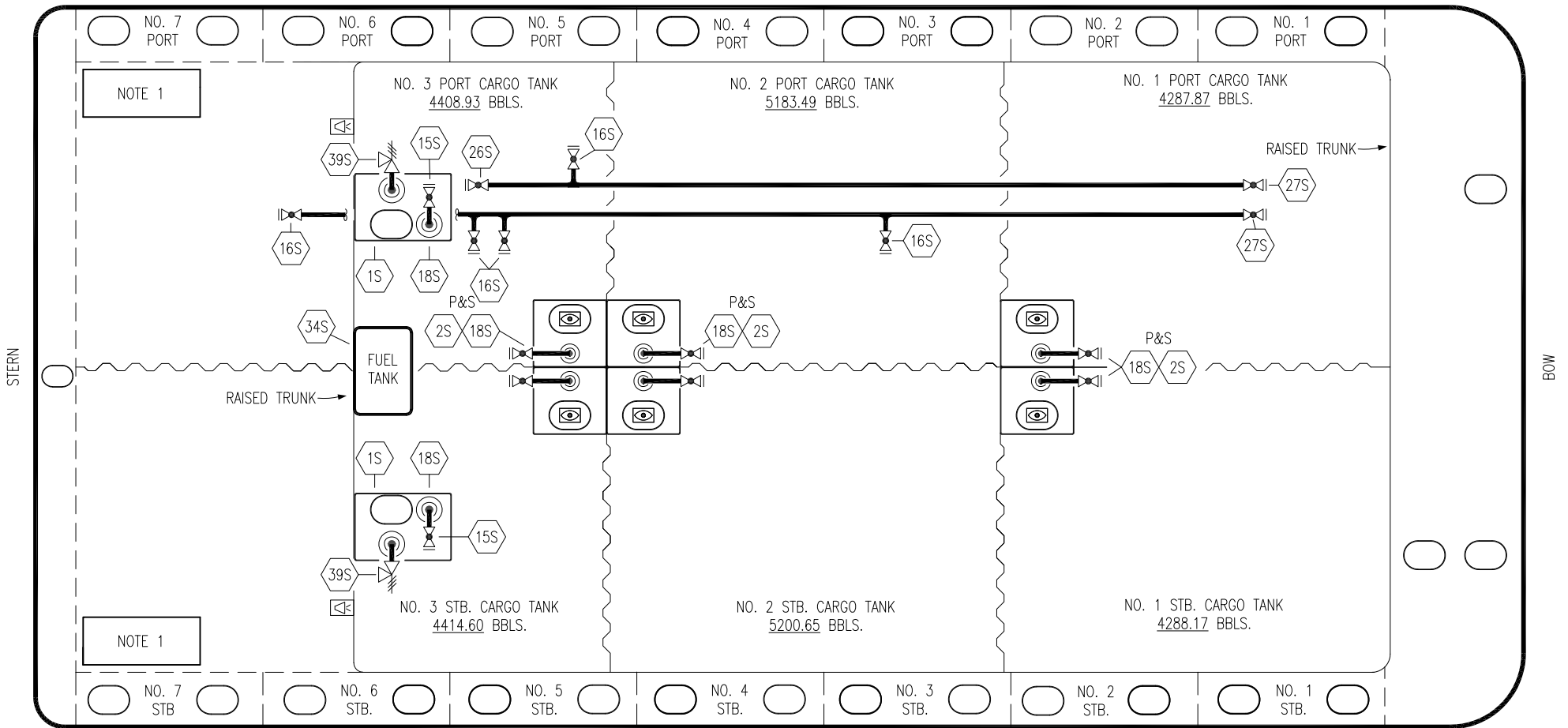
REV.	DATE	BY	CHK	APP	REVISION DESCRIPTION
1	10/30/19	NRB	DDA		REVISED PER CLIENT COMMENTS
0	02/20/19	MRV	DDA		ISSUED FOR APPROVAL

WEST GULF

KIRBY INLAND MARINE

**VAPOR
PIPING FLOW DIAGRAM**

KIRBY 27020	REV. 1
SCALE: NONE	PAGE: 2 OF 3



- | NO | DESCRIPTION |
|-----|--------------------------------|
| 1S | SLOP TANK |
| 2S | CARGO SUMP SUCTION VALVE |
| 15S | DISCHARGE VALVE |
| 16S | REMOTE SUCTION CONNECTION |
| 18S | TYP. STRIPPING PENETRATION (⊙) |
| 19V | EMERGENCY ENGINE SHUT DOWN |
| 26S | STRIPPING HEADER BLOCK VALVE |
| 27S | SUMP SUCTION VALVE |
| 39S | P/V VALVE |
| — | ABOVE DECK PIPING |

NOTE 1: CONTAINMENT P/S

WEST GULF

0	10/30/19	NRB	DDA		ISSUED FOR APPROVAL
REV.	DATE	BY	CHK	APP	REVISION DESCRIPTION

KIRBY INLAND MARINE 	
STRIPPING PIPING FLOW DIAGRAM	
SCALE: NONE	KIRBY 27020
PAGE: 3 OF 3	
	REV. 0