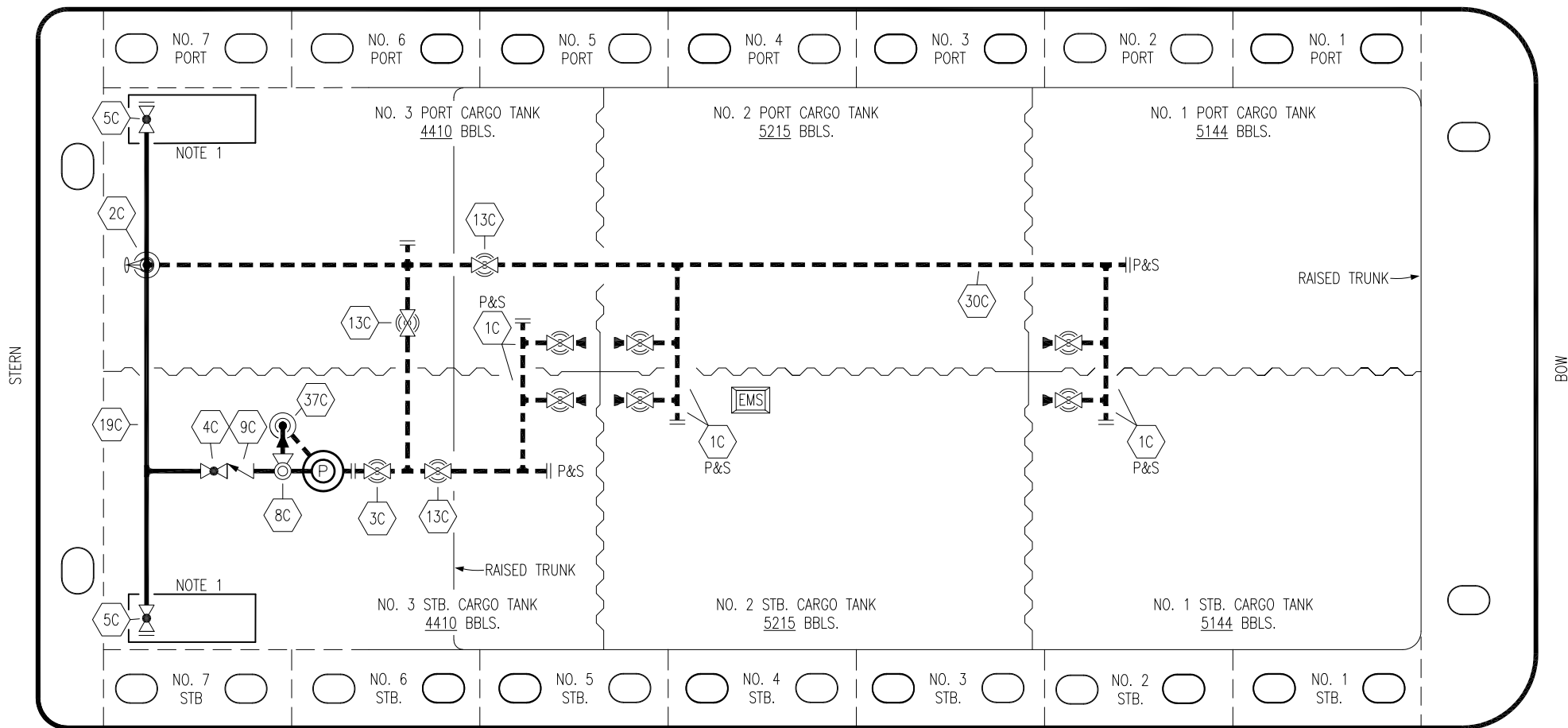


PORT



STARBOARD

- | | | | |
|-----|--------------------------|-------|-------------------|
| NO | DESCRIPTION | NO | DESCRIPTION |
| 1C | CARGO TANK VALVE | 30C | CARGO PIPELINE |
| 2C | LOAD VALVE | 37C | CARGO DROP |
| 3C | MASTER SUCTION VALVE | | |
| 4C | DISCHARGE VALVE | — | ABOVE DECK PIPING |
| 5C | HEADER VALVE | - - - | BELOW DECK PIPING |
| 8C | RELIEF VALVE | | |
| 9C | CHECK VALVE | | |
| 13C | CARGO PIPING BLOCK VALVE | | |
| 19C | CARGO HEADER | | |

NOTE 1: CONTAINMENT P/S

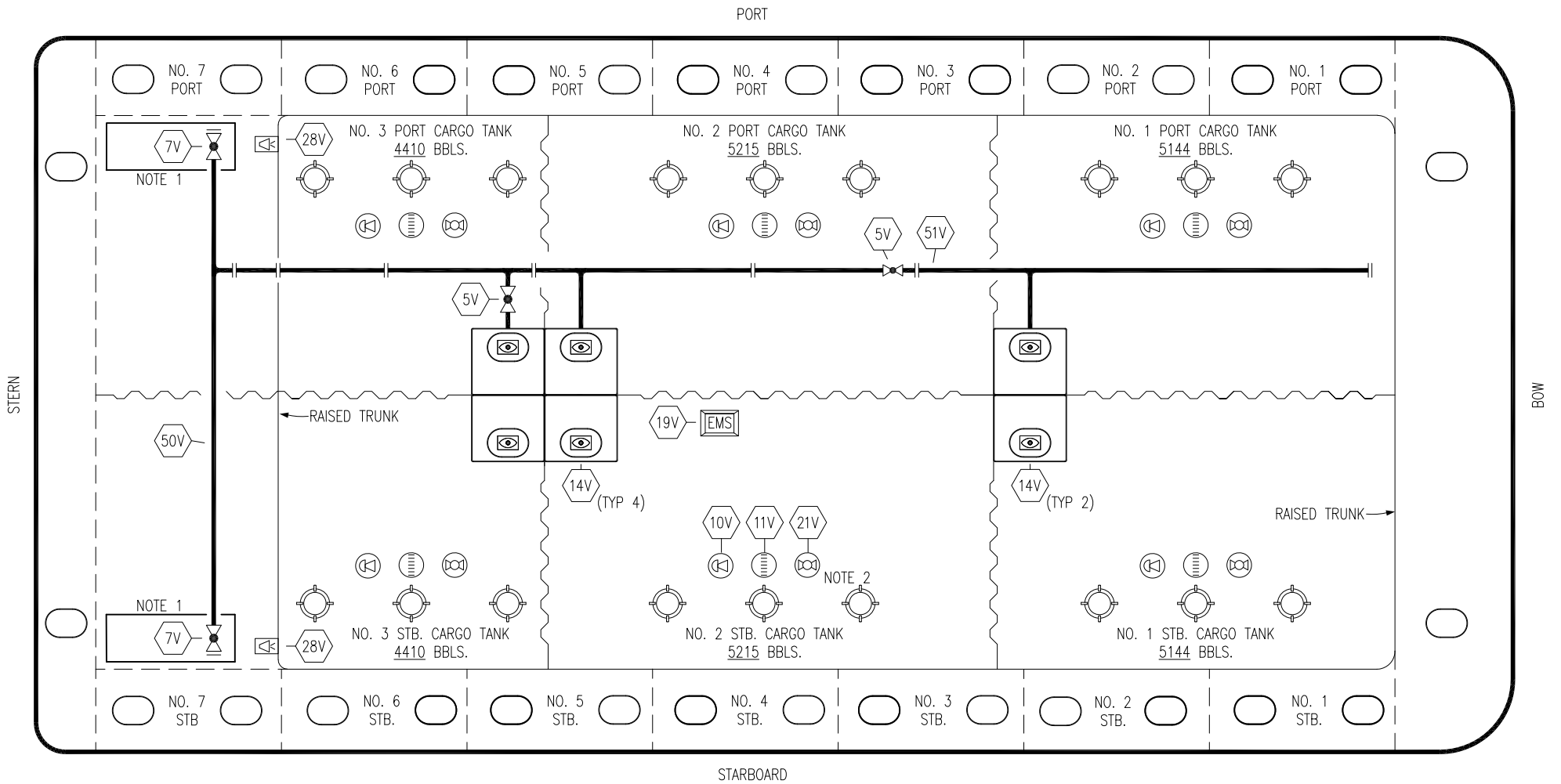
REV.	DATE	BY	CHK	APP	REVISION DESCRIPTION
1	08/02/19	NRB	DDA		REVISED BARGE NAME
0	02/20/19	MRV	DDA		ISSUED FOR APPROVAL

WEST GULF

KIRBY INLAND MARINE

**CARGO
PIPING FLOW DIAGRAM**

KIRBY 27019	REV. 1
SCALE: NONE	PAGE: 1 OF 2



- | | |
|-----|----------------------------|
| NO | DESCRIPTION |
| 5V | BLOCK VALVE |
| 7V | HEADER VALVE |
| 10V | HIGH LEVEL/OVERFILL ALARM |
| 11V | 1-METER GAUGE STICK |
| 14V | SIGHT GLASS |
| 19V | EMERGENCY ENGINE SHUT DOWN |

- | | |
|-----|-----------------------|
| NO | DESCRIPTION |
| 21V | HERMETIC GAUGE |
| 28V | DOCK CONNECTION ALARM |
| 50V | VAPOR HEADER |
| 51V | VAPOR PIPELINE |
| | ABOVE DECK PIPING |

NOTE 2: TYPICAL RIGGING IN EACH TANK
 NOTE 1: CONTAINMENT P/S

WEST GULF

1	08/02/19	NRB	DDA		REVISED BARGE NAME
0	02/20/19	MRV	DDA		ISSUED FOR APPROVAL
REV.	DATE	BY	CHK	APP	REVISION DESCRIPTION

KIRBY INLAND MARINE

**VAPOR
PIPING FLOW DIAGRAM**

SCALE: NONE	KIRBY 27019	REV. 1
PAGE: 2 OF 2		