


- | | | | |
|--------|--------------------------|---------|---------------------|
| NO. 1C | DESCRIPTION | NO. 20C | DESCRIPTION |
| 1C | CARGO TANK VALVE | 20C | DUMMY HEADER PIPING |
| 2C | LOAD VALVE | 21C | DUMMY HEADER VALVE |
| 3C | MASTER SUCTION VALVE | 30C | CARGO PIPELINE |
| 4C | DISCHARGE VALVE | 37C | CARGO DROP |
| 5C | HEADER VALVE | 43S | STERN HEADER VALVE |
| 8C | RELIEF VALVE | | |
| 9C | CHECK VALVE | | |
| 13C | CARGO PIPING BLOCK VALVE | | |
| 19C | CARGO HEADER | | |

NOTE 1: CONTAINMENT P/S

REV.	DATE	BY	CHK	APP	REVISION DESCRIPTION
0	09/11/19	NRB	DDA		ISSUED FOR APPROVAL



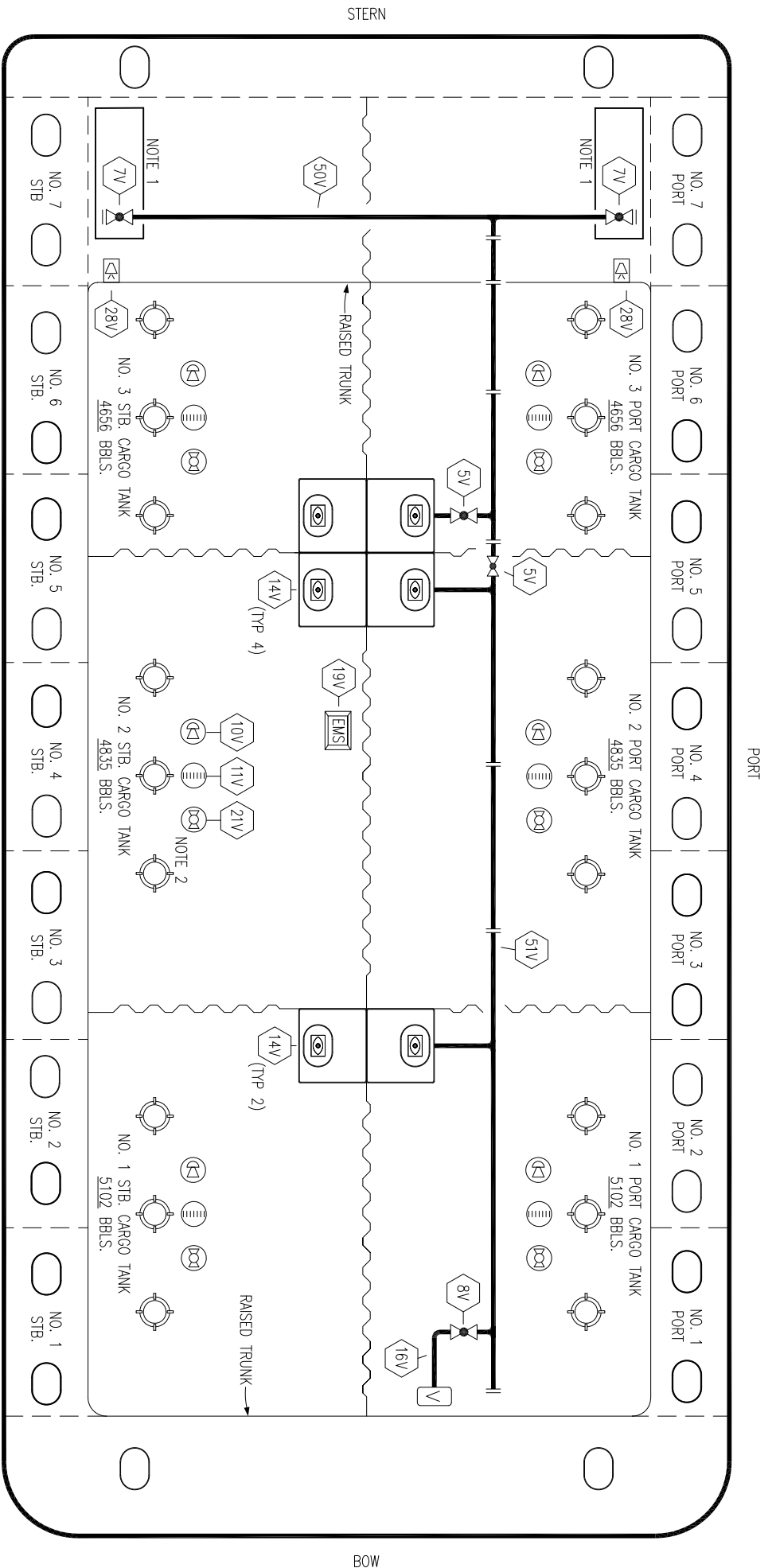
KIRBY INLAND MARINE

CARGO

PIPING FLOW DIAGRAM

SCALE: NONE
 PAGE: 1 OF 2
KIRBY 27017

REV. **0**



NO.	DESCRIPTION
5V	BLOCK VALVE
7V	HEADER VALVE
8V	VENT STACK VALVE
10V	HIGH LEVEL/OVERFILL ALARM
11V	1-METER GAUGE STICK
14V	SIGHT GLASS
16V	VAPOR VENT STACK

NO.	DESCRIPTION
19V	EMERGENCY ENGINE SHUT DOWN
21V	HERMETIC GAUGE
28V	DOCK CONNECTION ALARM
50V	VAPOR HEADER
51V	VAPOR PIPELINE
(Line)	ABOVE DECK PIPING

NOTE 2: TYPICAL RIGGING IN EACH TANK
 NOTE 1: CONTAINMENT P/S

REV.	DATE	BY	CHK	APP	REVISION DESCRIPTION
0	09/11/19	NRB	DDA		ISSUED FOR APPROVAL

KIRBY INLAND MARINE

VAPOR

PIPING FLOW DIAGRAM

KIRBY 27017

SCALE: NONE
 PAGE: 2 OF 2