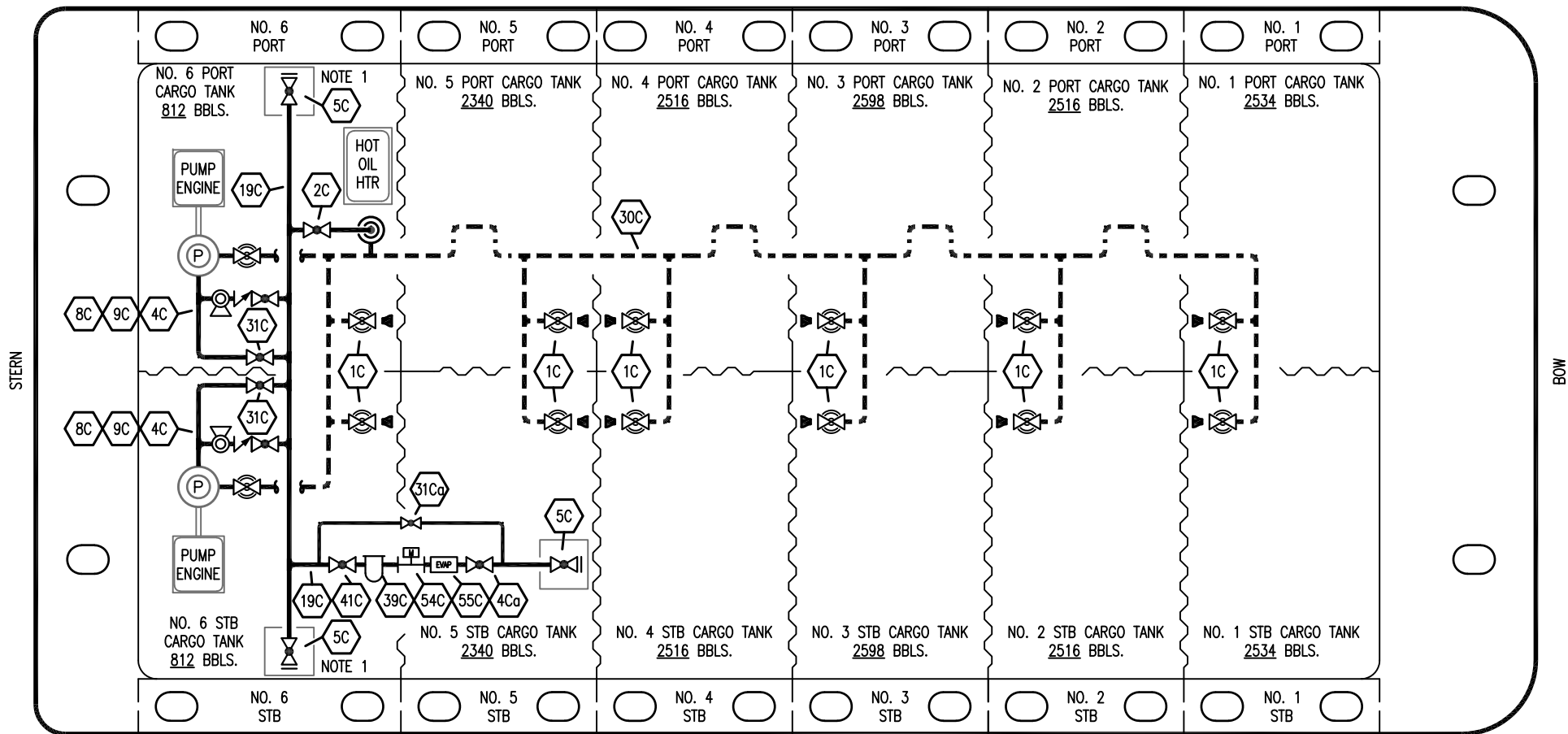


PORT



STARBOARD

- NO DESCRIPTION
- 1C CARGO TANK VALVE
- 2C LOAD VALVE
- 4C DISCHARGE VALVE
- 4Ca METER DISCHARGE VALVE
- 5C HEADER VALVE
- 8C RELIEF VALVE
- 9C CHECK VALVE
- 19C CARGO HEADER
- 30C CARGO PIPELINE

- NO DESCRIPTION
- 31C PUMP BYPASS VALVE
- 31Ca METER BYPASS VALVE
- 37C CARGO DROP
- 39C STRAINER
- 41C METER SUCTION VALVE
- 54C METER
- 55C EVAPORATOR
- ABOVE DECK PIPING
- - - BELOW DECK PIPING

NOTE 1: CONTAINMENT P/S

EX: 501

REV.	DATE	BY	CHK	APP	REVISION DESCRIPTION
1	02/15/24	MRV	DDA	TFB	REVISED PER CLIENT COMMENTS
0	11/25/13	DCB	DDA		ISSUED FOR REVIEW

**KIRBY INLAND MARINE** 

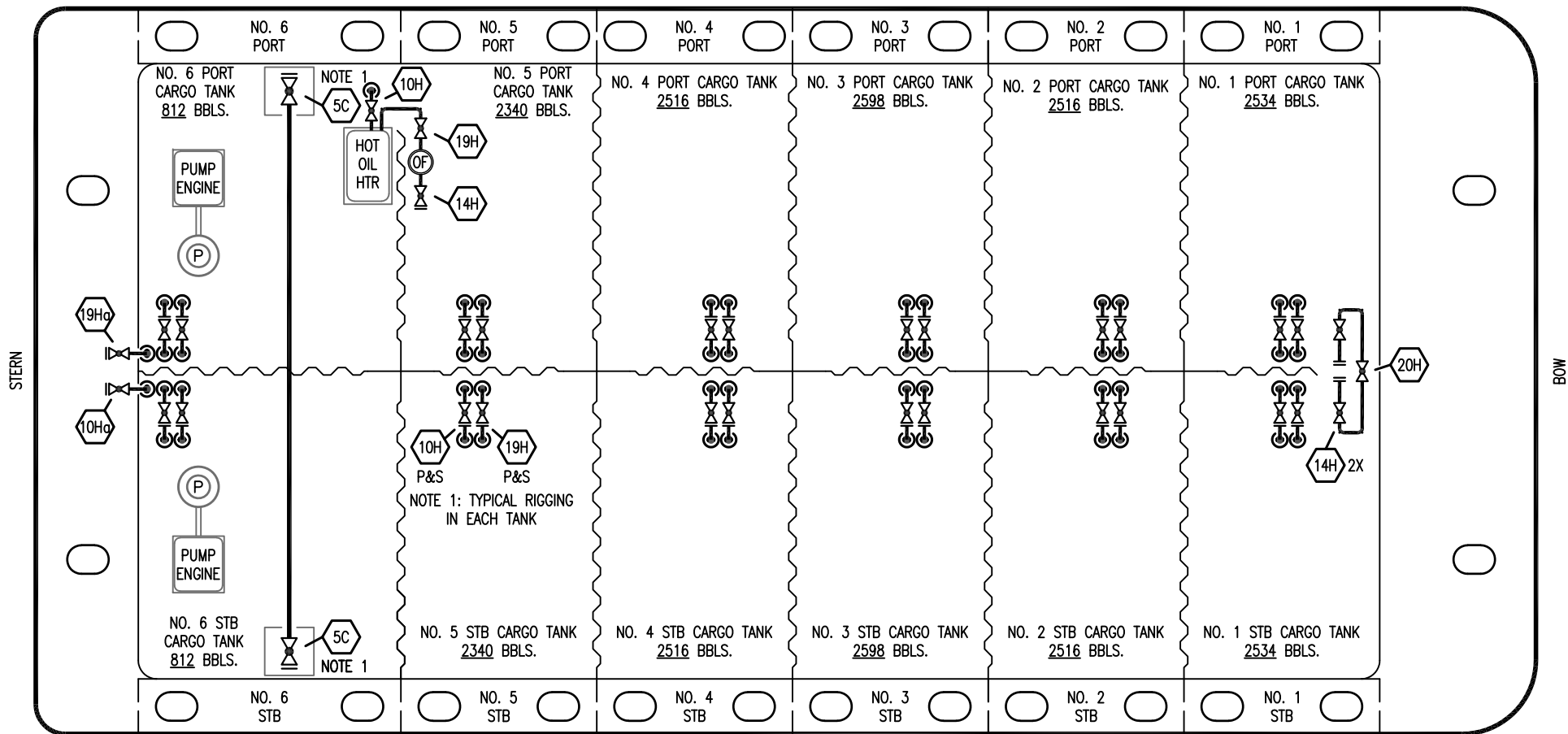
**CARGO  
PIPING FLOW DIAGRAM**

SCALE: NONE  
PAGE: 1 OF 2

**KIRBY 26750**

REV. **1**

PORT



STARBOARD

- |      |                             |
|------|-----------------------------|
| NO   | DESCRIPTION                 |
| 10H  | SUPPLY VALVE                |
| 10Ho | BARGE TO BARGE SUPPLY VALVE |
| 14H  | BLOCK VALVE                 |
| 15H  | HOT OIL                     |
| 19H  | RETURN VALVE                |
| 19Ho | BARGE TO BARGE RETURN VALVE |
| 20H  | BYPASS VALVE                |

NOTE 1: TYPICAL RIGGING IN EACH TANK

EX: 501

1	02/15/24	MRV	DDA	TFB	REVISED PER CLIENT COMMENTS
0	11/25/13	DCB	DDA		ISSUED FOR REVIEW
REV.	DATE	BY	CHK	APP	REVISION DESCRIPTION

**KIRBY INLAND MARINE**

**HOT OIL  
PIPING FLOW DIAGRAM**

SCALE: NONE  
PAGE: 2 OF 2

**KIRBY 26750**

REV. **1**