

PORT

BOW

STERN

STARBOARD

TRINITY - EX: HW 2525



KIRBY INLAND MARINE

CARGO

PIPING FLOW DIAGRAM

REV. 3
SCALE: NONE
PAGE: 1 OF 3

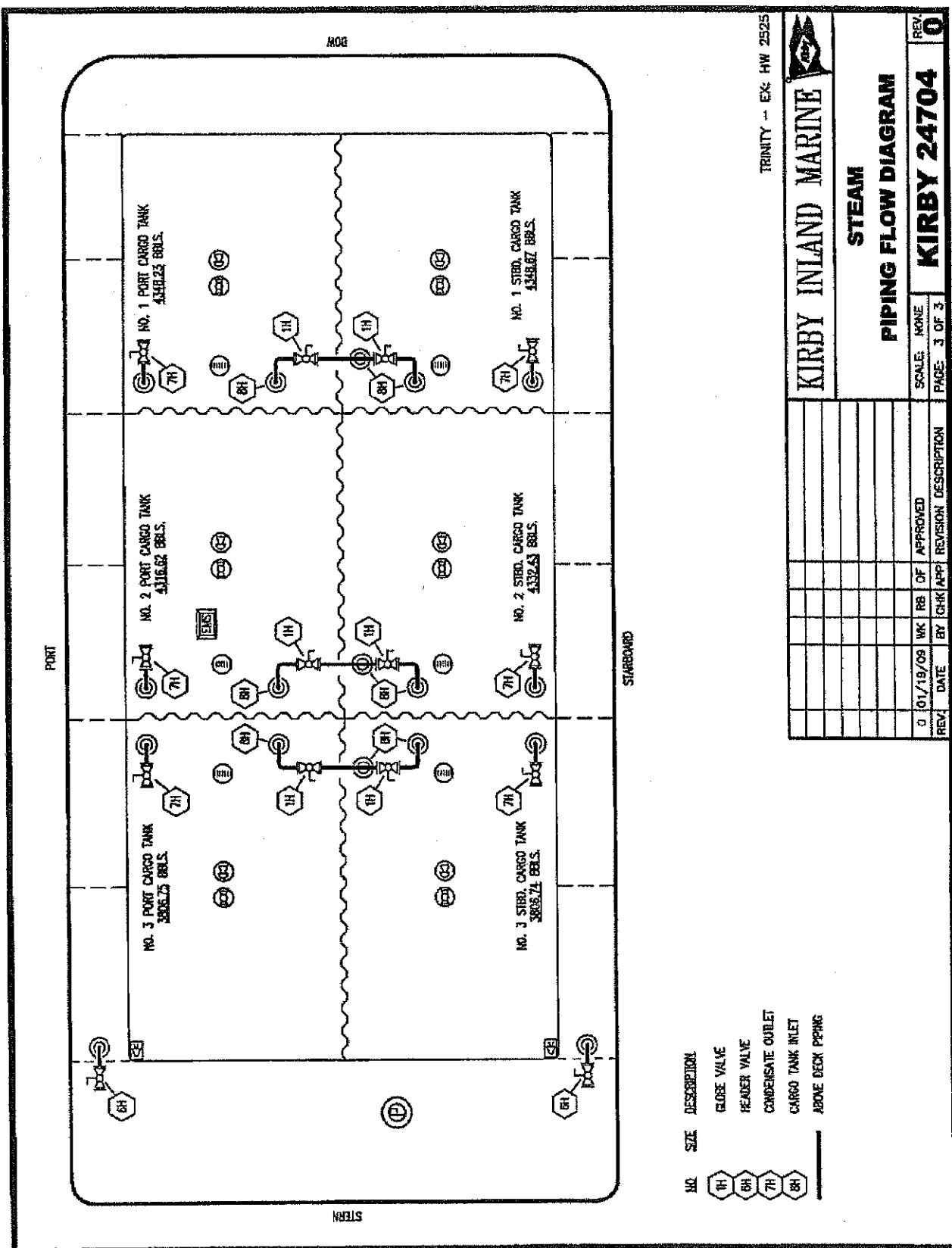
NO SIZE DESCRIPTION

- 1C CARGO TANK VALVE
- 2C LOAD VALVE
- 2S CARGO SUMP SUCTION VALVE
- 3C MASTER SUCTION VALVE
- 4C DISCHARGE VALVE
- 5C HEADER VALVE
- 13C CARGO PIPING BLOCK VALVE
- 18S STRIPPING DROP
- 33S PUMP WELL SUCTION VALVE

— ABOVE DECK PIPING

- - - BELOW DECK PIPING

REV.	DATE	BY	CHK APP	REVISION DESCRIPTION
3	01/13/17	WFBI	DDA	REVISED PER CLIENT COMMENTS
2	08/30/16	WFBI	DDA	OF REVISED PER CLIENT COMMENTS
1	03/17/14	GP	GP	REVISED PER CLIENT
0	01/19/09	WK	RB	OF APPROVED



TRINITY -- EX: HW 2525



KIRBY INLAND MARINE

STEAM

PIPING FLOW DIAGRAM

REV. **0**

KIRBY 24704

SCALE: NONE
PAGE: 3 OF 3

REV.	DATE	BY	CHK	APP	REVISION DESCRIPTION
0	01/19/09	WK	RB	OF	APPROVED

- NO. SIZE DESCRIPTION**
- GLOBE VALVE
 - HEADER VALVE
 - CONDENSATE OUTLET
 - CARGO TANK INLET
 - ABOVE DECK PIPING