

TRINITY - EX: HW 24302



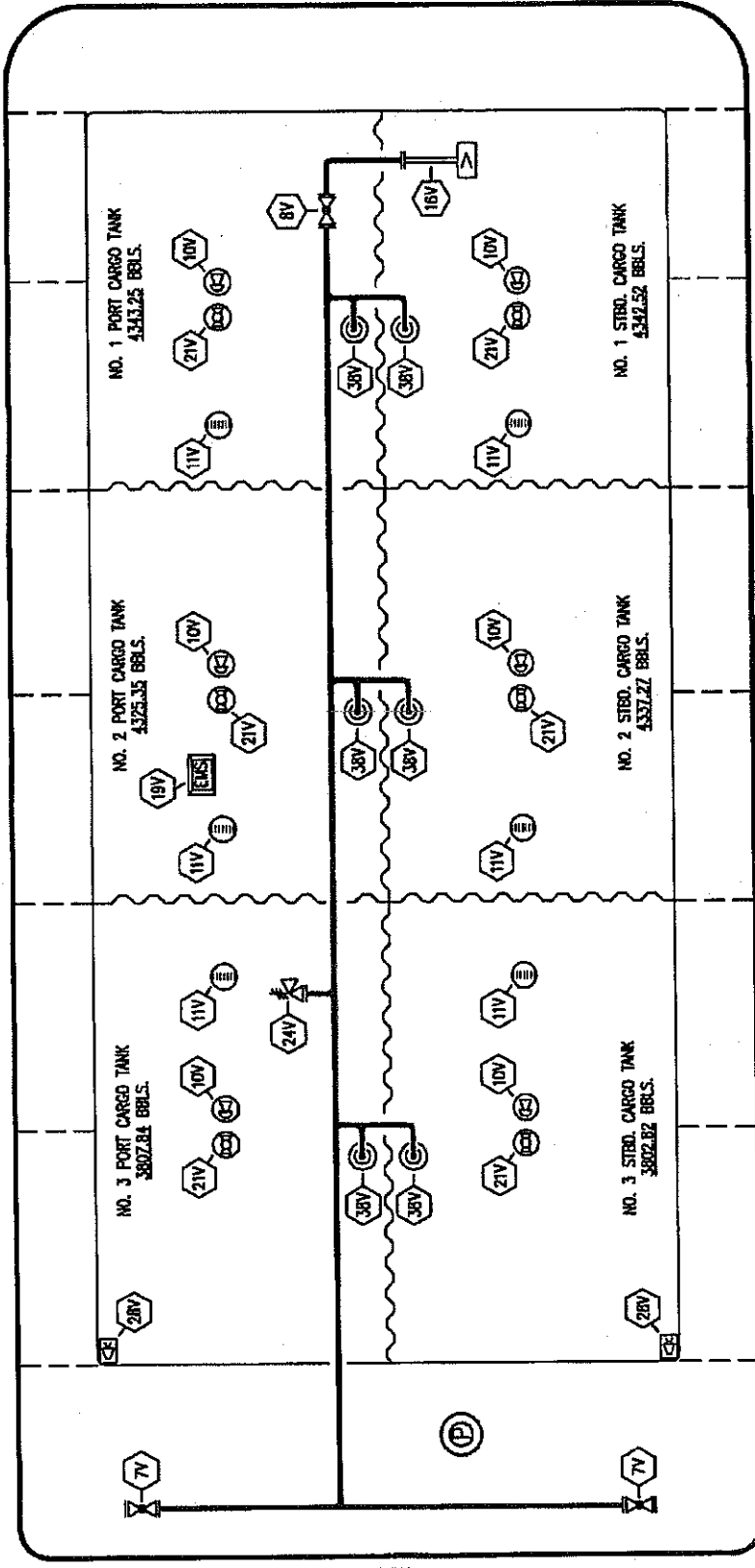
CARGO

PIPING FLOW DIAGRAM

SCALE: NONE
PAGE: 1 OF 3
REV. **KIRBY 24703**
REV. **2**

- NO. 1C CARGO TANK VALVE
- NO. 2C LOAD VALVE
- NO. 3C MASTER SUCTION VALVE
- NO. 4C DISCHARGE VALVE
- NO. 5C HEADER VALVE
- NO. 13C CARGO PIPING BLOCK VALVE
- ABOVE DECK PIPING
- BELOW DECK PIPING

REV.	DATE	BY	CHK	APP	REVISION DESCRIPTION
2	01/13/17	WFB	DDA		REVISED PER CLIENT COMMENTS
1	03/14/14	GP	MP		REVISED PER CLIENT
0	01/19/09	WK	RB		APPROVED



TRINITY - EX: HW 24302

KIRBY INLAND MARINE

VAPOR PIPING FLOW DIAGRAM

KIRBY 24703

SCALE: NONE
PAGE: 2 OF 3
REV: 0

NO.	SIZE	DESCRIPTION
7V	8"	HEADER VALVE
8V	8"	VENT STACK VALVE
10V	8"	HIGH LEVEL/OVERFILL ALARM
11V	8"	GAUGE STICK
16V	8"	VAPOR VENT STACK
19V	8"	EMERGENCY SHUTDOWN SYSTEM
21V	2"	HERMETIC GAUGE
24V		PRESSURE RELIEF VALVE
28V		HIGH LEVEL/OVERFILL ALARM
38V		DOCK CONNECTION
		VAPOR DROP
		ABOVE DECK PIPING

REV.	DATE	BY	CHK APP	WK	RB	OF	APPROVED	REVISION DESCRIPTION
0	01/19/09							

TRINITY - EX: HW 24302



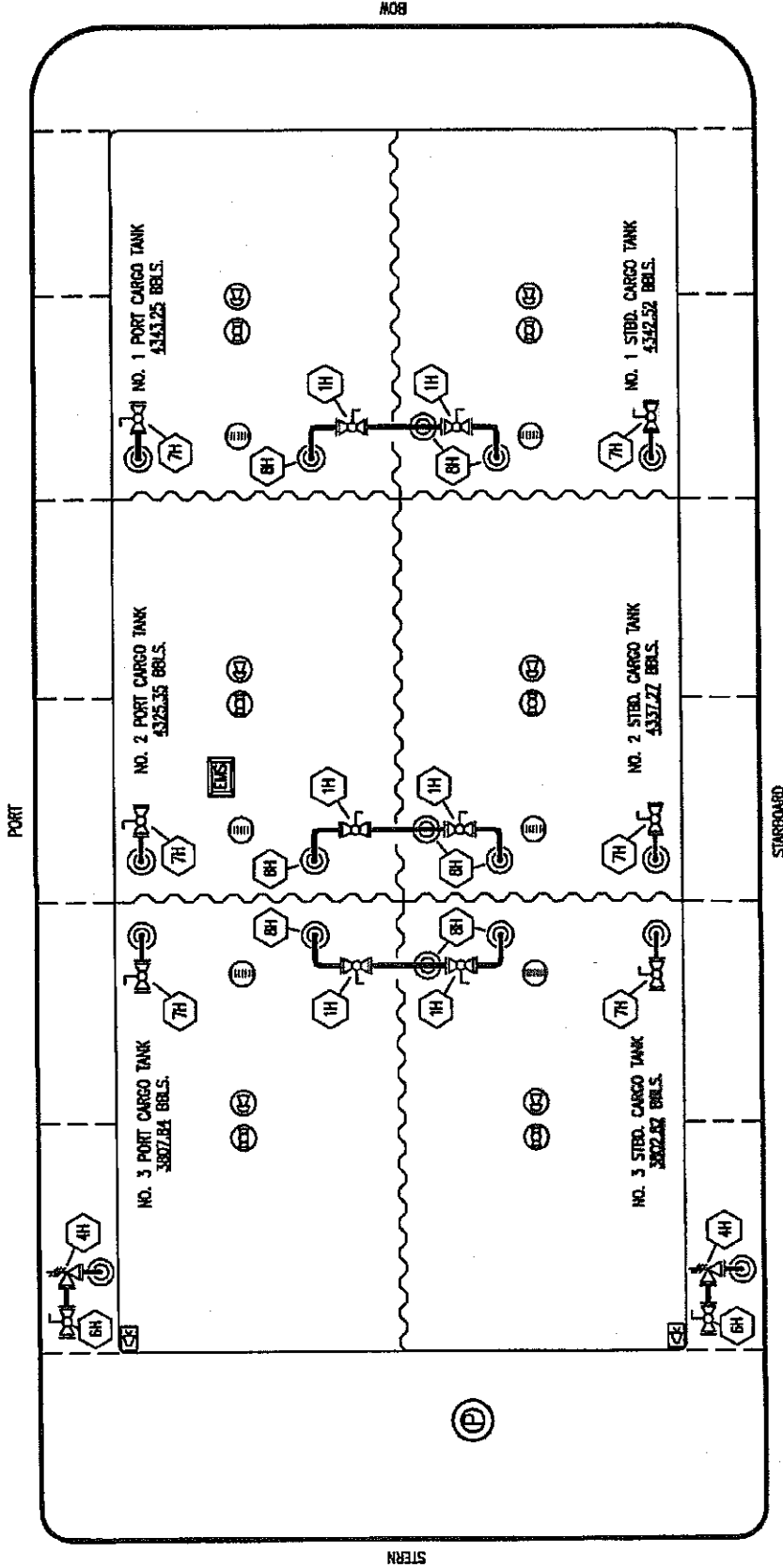
KIRBY INLAND MARINE

STEAM

PIPING FLOW DIAGRAM

SCALE: NONE
PAGE: 3 OF 3
REV: 0

REV.	DATE	BY	CHK APP	REVISION DESCRIPTION
0	01/19/09	WK	OF	APPROVED



- NO. SIZE DESCRIPTION
- 1H GLOBE VALVE
- 4H RELIEF VALVE
- 6H HEADER VALVE
- 7H CONDENSATE OUTLET
- 8H CARGO TANK INLET
- ABOVE DECK PIPING

PORT

STARBOARD

NOB

STERN