

- | | |
|-----|-----------------------------------|
| NO | DESCRIPTION |
| 2C | LOAD VALVE |
| 3C | MASTER SUCTION VALVE |
| 4C | DISCHARGE VALVE |
| 5C | HEADER VALVE |
| 8C | RELIEF VALVE |
| 9C | CHECK VALVE |
| 15C | BYPASS VALVE (AROUND CHECK VALVE) |
| 19C | CARGO HEADER |
| 35C | CROSSOVER VALVE |
| 36C | PRESSURE GAUGE |

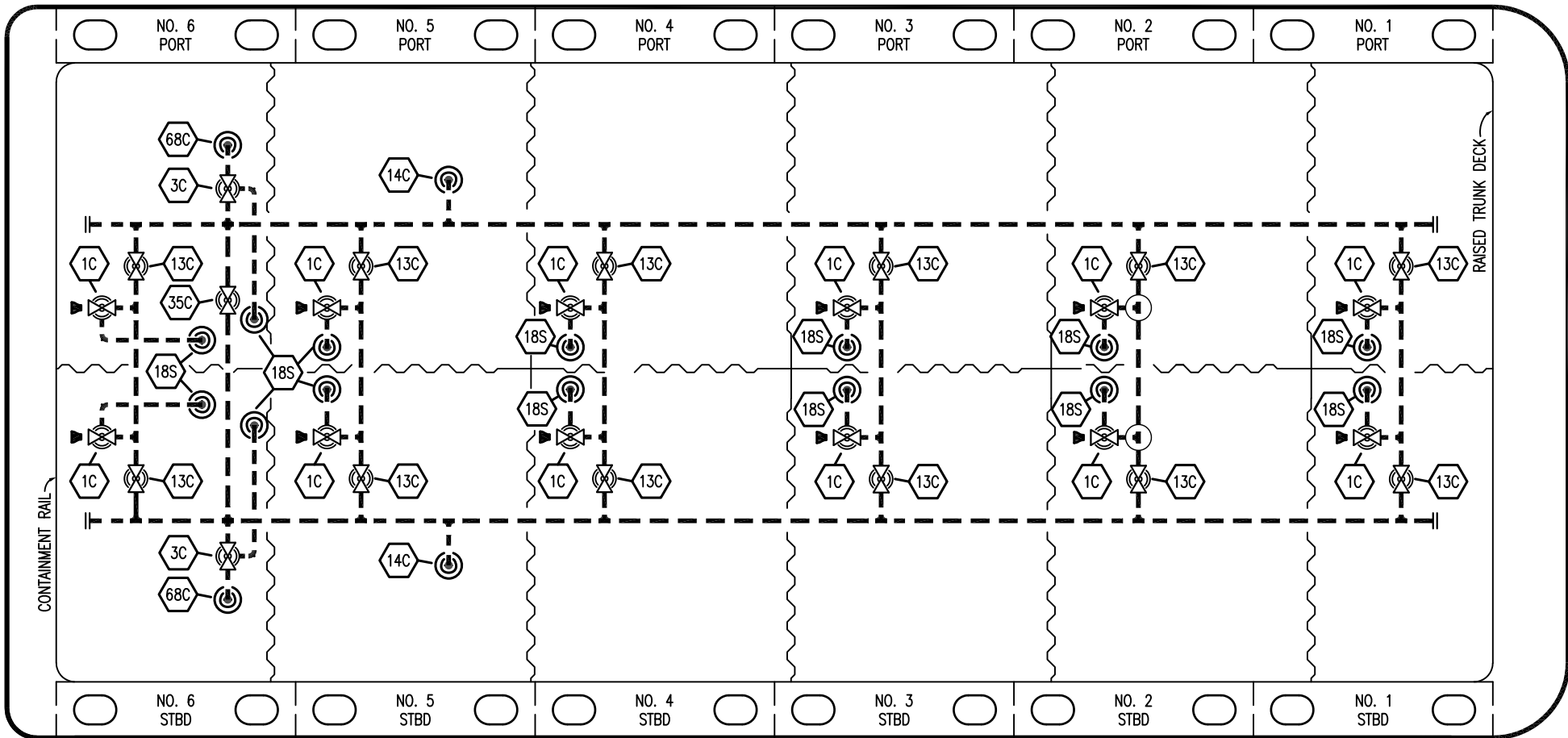
- | | |
|--|-------------------|
| | ABOVE DECK PIPING |
| | BELOW DECK PIPING |


- | | |
|----|-----------------------|
| NO | DESCRIPTION |
| | 1-METER GAUGE STICK |
| | HERMETIC GAUGE |
| | HIGH LEVEL ALARM |
| | EMERGENCY SHUT DOWN |
| | DOCK ALARM CONNECTION |

NOTE 1: CONTAINMENT

| | | | | |
|------|----------|-----|-----|-----------------------------|
| | | | | |
| | | | | |
| | | | | |
| 1 | 11/07/22 | MRV | DDA | REVISED PER CLIENT COMMENTS |
| 0 | 06/05/14 | DDA | DDA | ISSUED FOR APPROVAL |
| REV. | DATE | BY | CHK | REVISION DESCRIPTION |

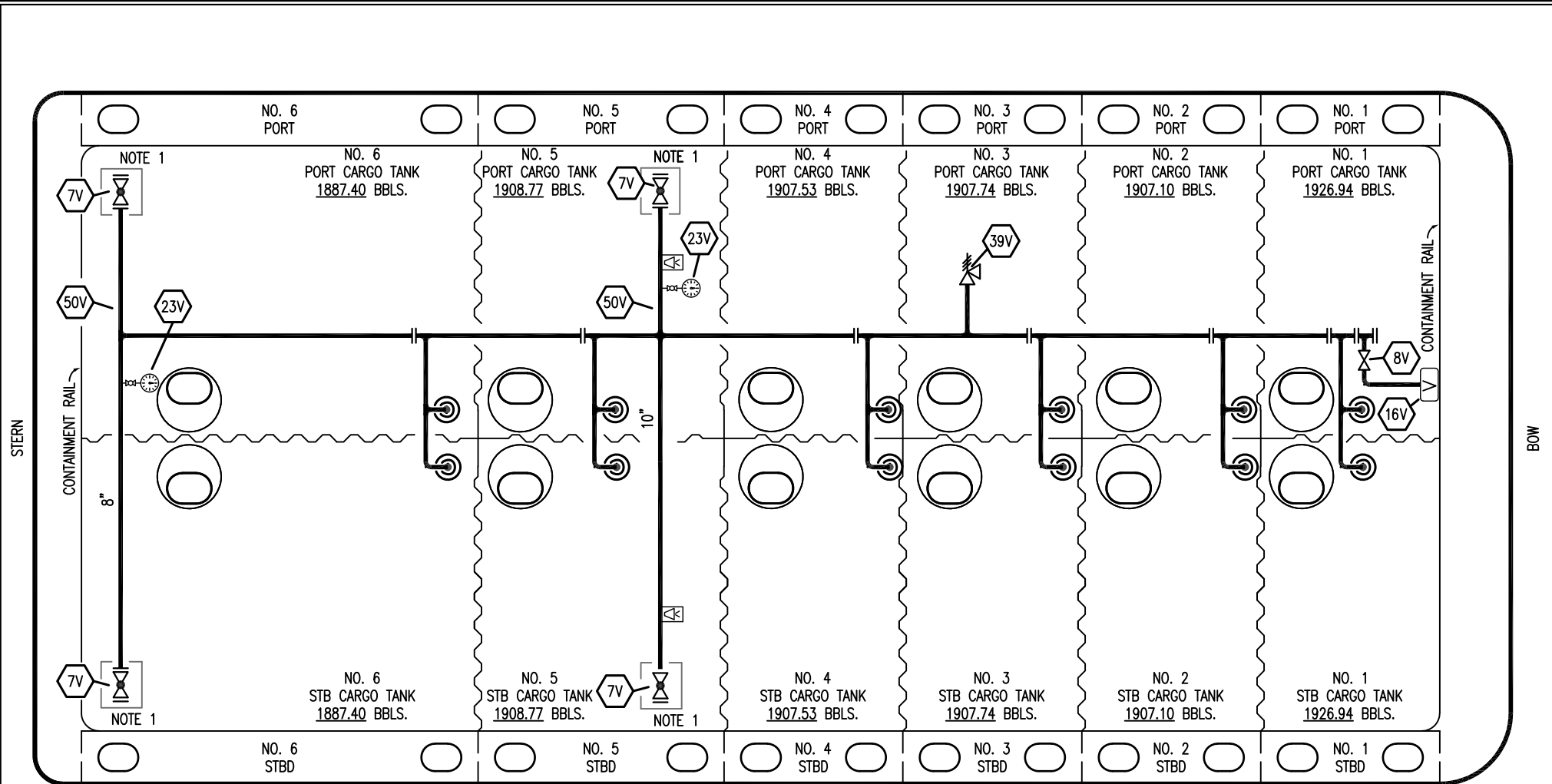
| | |
|--|--------------------|
| KIRBY INLAND MARINE | |
| CARGO ABOVE DECK PIPING DIAGRAM | |
| SCALE: NONE | KIRBY 22400 |
| PAGE: 1 OF 3 | |
| | REV. 1 |



- | NO | DESCRIPTION |
|-----|--|
| 1C | CARGO TANK VALVE |
| 3C | MASTER SUCTION VALVE |
| 13C | CARGO PIPING BLOCK VALVE |
| 14C | LOAD DROP VALVE |
| 18S | STRIPPING DROP  |
| 35C | CROSSOVER VALVE |
| 68C | DEEP WELL CAN |

| REV. | DATE | BY | CHK | REVISION DESCRIPTION |
|------|----------|-----|-----|-----------------------------|
| 1 | 11/07/22 | MRV | DDA | REVISED PER CLIENT COMMENTS |
| 0 | 06/05/14 | DDA | DDA | ISSUED FOR APPROVAL |

| | |
|--|--------------------|
| KIRBY INLAND MARINE  | |
| CARGO BELOW DECK PIPING DIAGRAM | |
| SCALE: NONE | KIRBY 22400 |
| PAGE: 2 OF 3 | REV. 1 |



- | NO | DESCRIPTION |
|-----|-------------------------------|
| 7V | HEADER VALVE |
| 8V | VENT STACK VALVE |
| 16V | VAPOR VENT STACK |
| 23V | PRESSURE GAUGE |
| 38V | VAPOR DROP OR PENETRATION (☉) |
| 39V | PRESSURE/VACUUM VALVE |
| 50V | VAPOR HEADER |

- ABOVE DECK PIPING
- - - BELOW DECK PIPING

☐ DOCK ALARM CONNECTION

NOTE 1: CONTAINMENT

| REV. | DATE | BY | CHK | REVISION DESCRIPTION |
|------|----------|-----|-----|-----------------------------|
| 1 | 11/07/22 | MRV | DDA | REVISED PER CLEINT COMMENTS |
| 0 | 06/05/14 | DDA | DDA | ISSUED FOR APPROVAL |

| | |
|--|--------------------|
| KIRBY INLAND MARINE | |
| VAPOR ABOVE DECK PIPING DIAGRAM | |
| SCALE: NONE | KIRBY 22400 |
| PAGE: 3 OF 3 | REV. 1 |