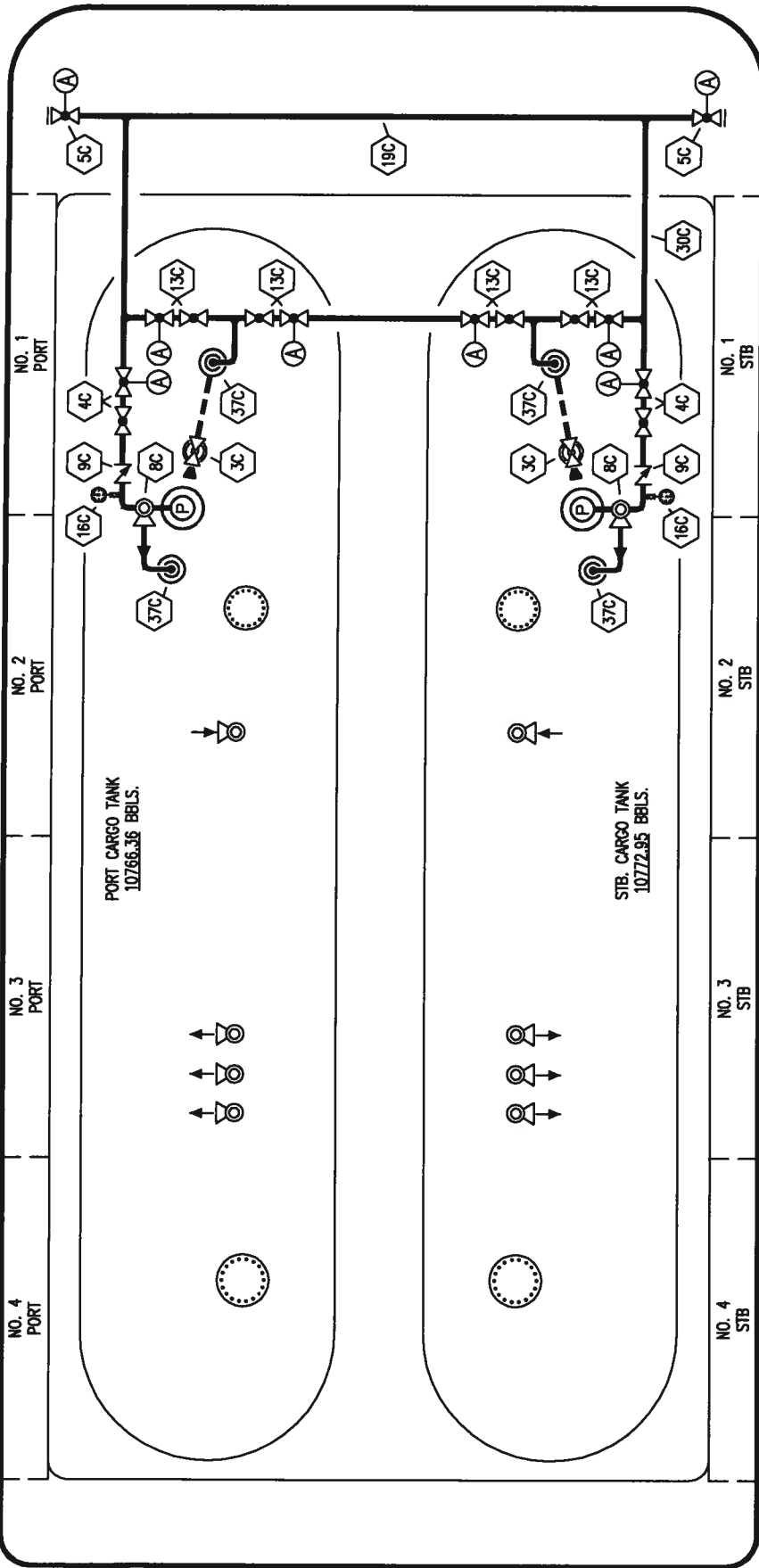


PORT

NO. 4 PORT NO. 3 PORT NO. 2 PORT NO. 1 PORT



STERN

BOW

PORT CARGO TANK  
10766.35 BBLS.

STB. CARGO TANK  
10772.95 BBLS.

NO. 4 STB NO. 3 STB NO. 2 STB NO. 1 STB

STARBOARD

**DESCRIPTION**

- 8" MASTER SUCTION VALVE
- 8" DISCHARGE VALVE
- 8" HEADER VALVE
- 6" RELIEF VALVE
- 8" CHECK VALVE
- CARGO PIPING BLOCK VALVE
- 2" DISCHARGE PRESSURE GAUGE
- 8" CARGO HEADER
- 8" CARGO PIPELINE
- CARGO DROP
- ABOVE DECK PIPING

- 3C
- 4C
- 5C
- 8C
- 9C
- 13C
- 16C
- 19C
- 30C
- 37C

SAINT LEWIS SHIPYARD -- EX: KIRBY 21856 HEDGES



**KIRBY INLAND MARINE**

**CARGO**

**PIPING FLOW DIAGRAM**

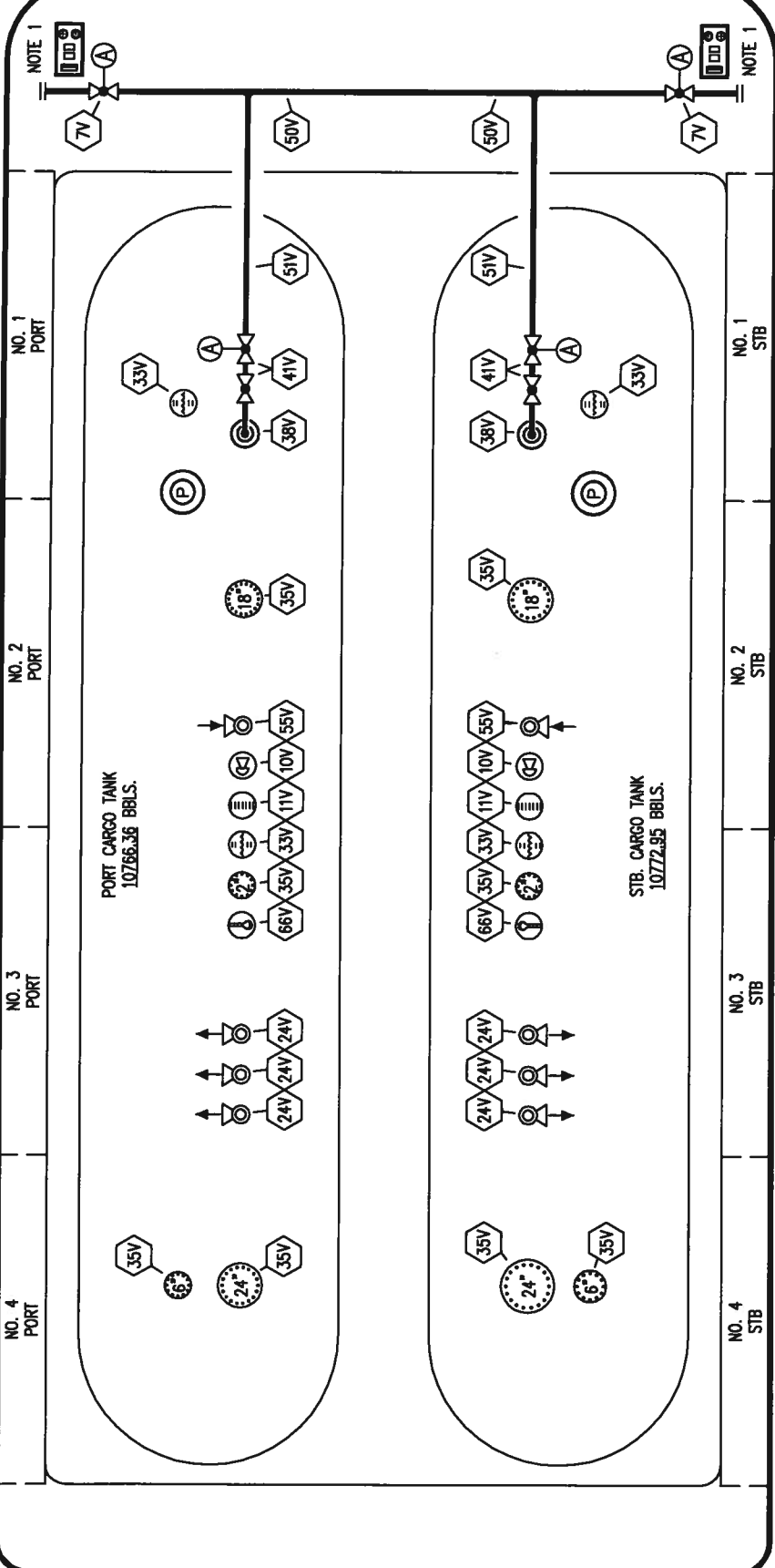
REV.	DATE	BY	CHK APP	REVISION	DESCRIPTION
0	03/22/10	RB	OF	APPROVED	

SCALE:	NONE
PAGE:	1 OF 2
REV:	<b>0</b>

**KIRBY 21856**

MOB

PORT



STARBOARD

SAINT LEWIS SHIPYARD - EX: KIRBY 21856 HEDGES

NOTE 1: CONTROL STATION



**KIRBY INLAND MARINE**

**VAPOR**

**PIPING FLOW DIAGRAM**

- |         |                                    |         |                   |
|---------|------------------------------------|---------|-------------------|
| NO. 7V  | 8" HEADER VALVE                    | NO. 50V | 8" VAPOR HEADER   |
| NO. 10V | 8" HIGH LEVEL/OVERFILL ALARM       | NO. 51V | 8" VAPOR PIPELINE |
| NO. 11V | 1-METER STICK GAUGE                | NO. 55V | 8" VACUUM BREAKER |
| NO. 24V | 6" PRESSURE RELIEF VALVE           | NO. 66V | 8" TEMP. SENSOR   |
| NO. 33V | 8" DIGITAL FLOAT LEVEL GAUGE (DFG) | ---     | ABOVE DECK PIPING |
| NO. 35V | BLIND NOZZLE                       | (A)     | AUTOMATIC         |
| NO. 38V | 8" VAPOR DROP                      |         |                   |
| NO. 41V | 8" VAPOR TANK VALVE                |         |                   |

REV.	DATE	BY	CHK	APP	REVISION DESCRIPTION
0	03/15/10	RB	OF	APPROVED	

SCALE: NONE  
PAGE: 2 OF 2

**KIRBY 21856**  
REV. 0