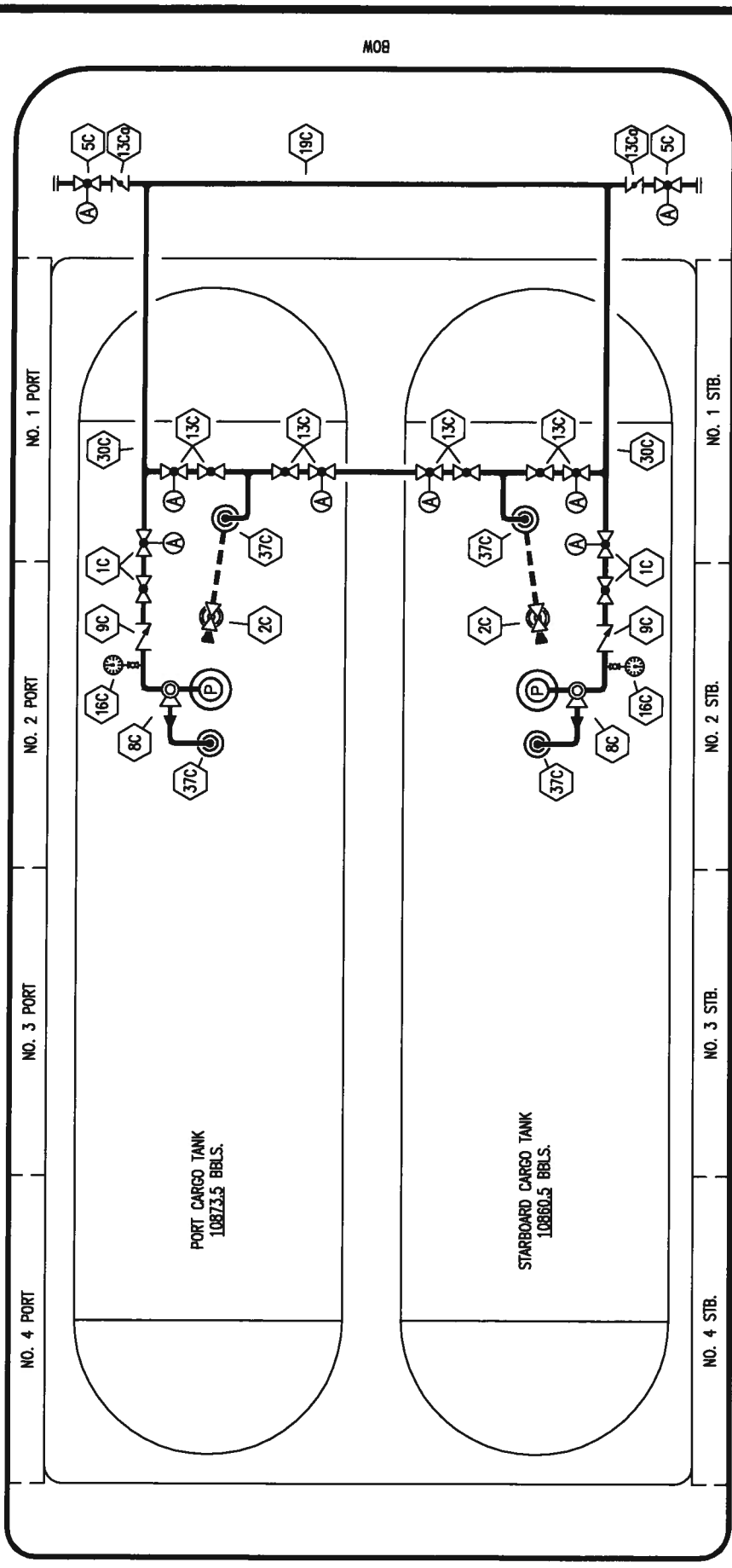


MOB

PORT



STERN

STARBOARD

- | | | | |
|------|--------------------------|-----|-----------------------------|
| NO | DESCRIPTION | NO | DESCRIPTION |
| 1C | 8" CARGO TANK VALVE | 16C | 2" DISCHARGE PRESSURE GAUGE |
| 2C | 8" LOAD VALVE | 19C | 8" CARGO HEADER |
| 4C | 8" DISCHARGE VALVE | 30C | 8" CARGO PIPELINE |
| 5C | 8" HEADER VALVE | 37C | CARGO DROP |
| 8C | 6" RELIEF VALVE | A | AUTOMATIC |
| 9C | 8" CHECK VALVE | — | ABOVE DECK PIPING |
| 13C | 8" BLOCK VALVE | --- | BELOW DECK PIPING |
| 13Cq | 8" BUTTERFLY BLOCK VALVE | | |

NOTE: VALVES ARE MANUALLY OPERATED UNLESS OTHERWISE SPECIFIED.

HOUSTON BARGE - EX: COLUMBIA

KIRBY INLAND MARINE

CARGO PIPING FLOW DIAGRAM

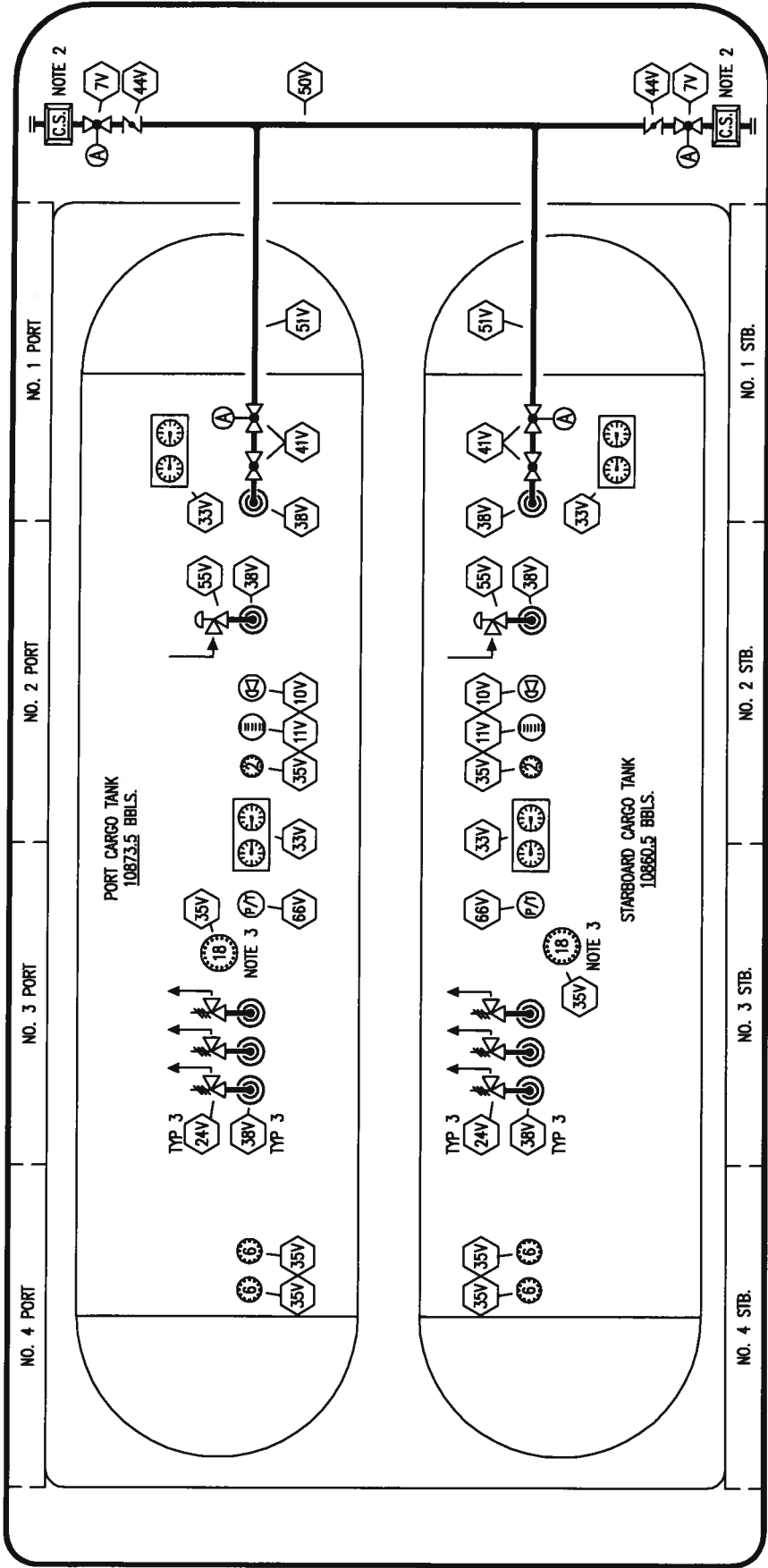
REV.	DATE	BY	CHK	APP	REVISION DESCRIPTION
0	10/20/09	RB	OF	APPROVED	

SCALE: NONE
PAGE: 1 OF 2

REV. **0**

KIRBY 21855

MOB



PORT CARGO TANK
10873.5 BBLs.

STARBOARD CARGO TANK
10850.5 BBLs.

PORT

STARBOARD

NO. 1 PORT

NO. 2 PORT

NO. 3 PORT

NO. 4 PORT

NO. 1 STB.

NO. 2 STB.

NO. 3 STB.

NO. 4 STB.

STERN

HOUSTON BARGE - EX: COLUMBIA



KIRBY INLAND MARINE

VAPOR
PIPING FLOW DIAGRAM

- | | | | |
|-----|----------------------------------|-----|-------------------------|
| NO | DESCRIPTION | NO | DESCRIPTION |
| 7V | 8" HEADER VALVE | 50V | 8" VAPOR HEADER |
| 10V | HIGH LEVEL/OVERFILL ALARM | 51V | 8" VAPOR PIPELINE |
| 11V | 1 METER GAUGE STICK | 55V | 8" VACUUM BREAKER |
| 24V | 6" PRESSURE RELIEF VALVE | 66V | NOZZLE PRES/TEMP SENSOR |
| 33V | DIGITAL FLOAT LEVEL GAUGE SYSTEM | — | ABOVE DECK PIPING |
| 35V | NOZZLE | (A) | AUTOMATIC |
| 38V | VAPOR DROP OR PENETRATION | | |
| 41V | 8" VAPOR TANK VALVE | | |
| 44V | 8" BLOCK BUTTERFLY VALVE | | |

- NOTE 1: VALVES ARE MANUALLY OPERATED UNLESS OTHERWISE SHOWN.
 NOTE 2: CONTROL STATION
 NOTE 3: 18" ACCESS MANWAY

REV.	DATE	BY	CHK	APP	REVISION DESCRIPTION
0	10/20/09	RB	OF	APPROVED	

SCALE: NONE
PAGE: 2 OF 2

REV. 0
KIRBY 21855