

- | | | | |
|-----|---------------------|-----|-----------------------|
| NO | DESCRIPTION | NO | DESCRIPTION |
| 2C | 6" LOAD VALVE | 30C | 6" CARGO PIPELINE |
| 5C | 6" HEADER VALVE | 37C | 6" CARGO DROP |
| 8C | RELIEF VALVE | — | — ABOVE DECK PIPING |
| 9C | 6" CHECK VALVE | --- | --- BELOW DECK PIPING |
| 9C | 6" BLOCK VALVE | (A) | AUTOMATIC |
| 19C | 6" CARGO HEADER | | |
| 19V | EMERGENCY SHUT DOWN | | |

NOTE: CARGO TANKS CONNECTED BY COMMON VAPOR LINE.

HOUSTON SHIPYARD - EX: B 2505

0	03/15/10	RB	RB	OF	APPROVED	
REV.	DATE	BY	CHK	APP	REVISION DESCRIPTION	

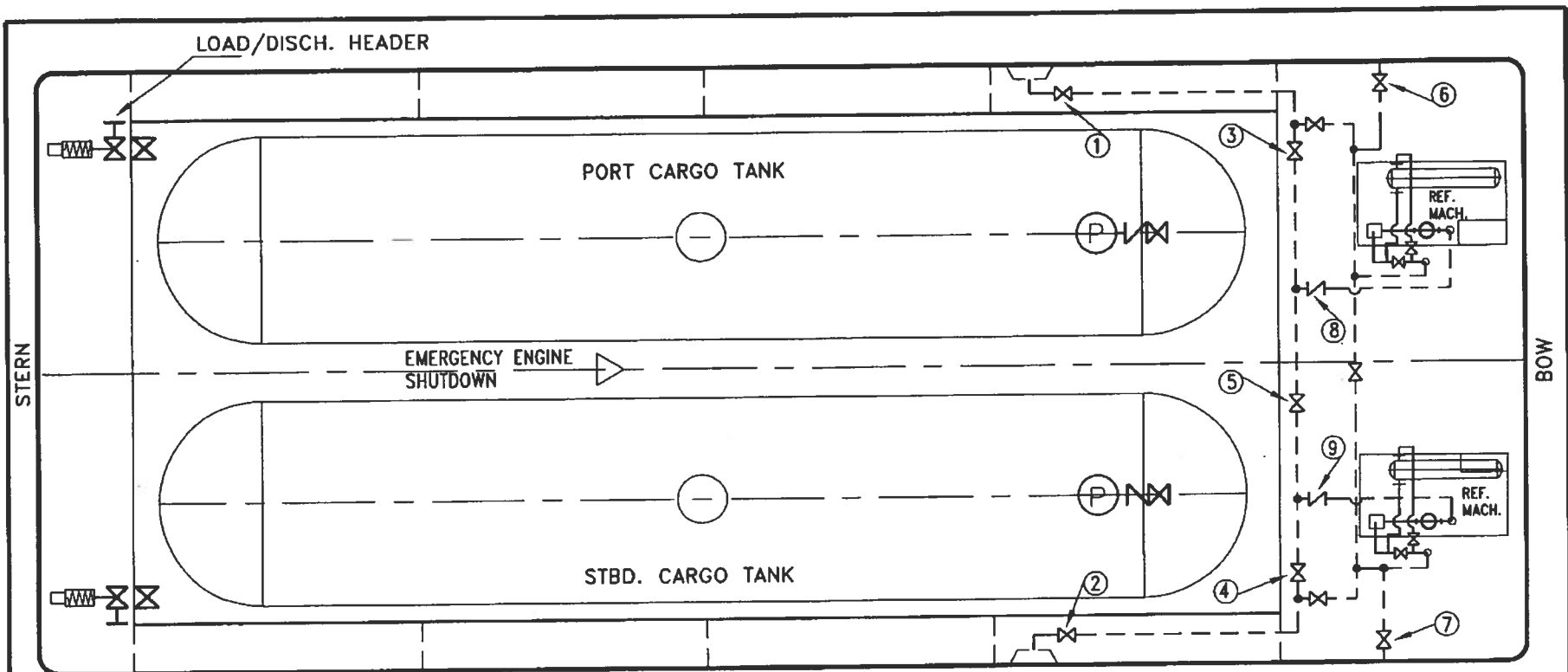
KIRBY INLAND MARINE 

**CARGO
PIPING FLOW DIAGRAM**

SCALE: NONE
PAGE: 1 OF 1

KIRBY 21852

REV. **0**



LEGEND

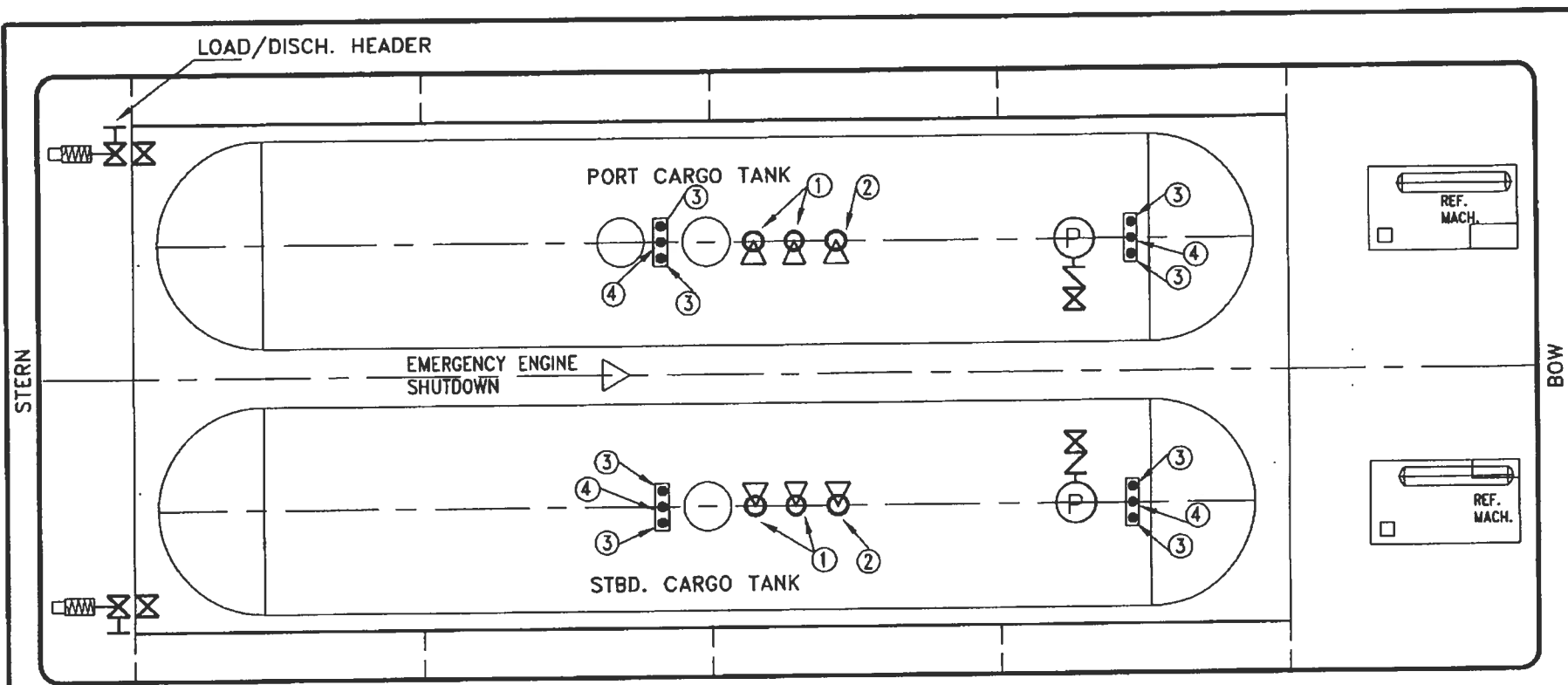
NO	SIZE	DESCRIPTION	NO	SIZE	DESCRIPTION
1.	6"	PORT SEA CHEST VALVE	11.	8"	STBD. STRAINER
2.	6"	STBD. SEA CHEST VALVE	12.	4"	PORT PUMP DISCH. VALVE
3.	6"	PORT INBOARD SUPPLY VALVE	13.	4"	STBD. PUMP DISCH. VALVE
4.	6"	STBD. INBOARD SUPPLY VALVE	14.	4"	PORT H.E. VALVE
5.	6"	SUPPLY BLOCK VALVE	15.	4"	STBD. H.E. VALVE
6.	4"	PORT OVER BOARD VALVE	16.		PORT SEACHEST
7.	4"	STBD. OVER BOARD VALVE	17.		STBD. SEACHEST
8.	6"	PORT PUMP SUCTION CHECK VALVE			
9.	6"	STBD. PUMP SUCTION CHECK VALVE			
10.	8"	PORT STRAINER			

COOLING WATER
DIAGRAM

KIRBY 21852

(EX. B 2505)

Effective Date:	Revision No.	Page
3/5/03	1	2 of 3



LEGEND

NO	SIZE	DESCRIPTION
1.	6"	PRESSURE RELIEF VAL;VE
2.	4"	VAC. RELIEF VALVE
3.		FLOAT GAUGE
4.		TAPE GAUGE

VAPOR PIPING, GAUGING,
AND OVERFILL
PROTECTION

KIRBY 21852

Effective Date:	Revision No.	Page
3/5/03	1	3 of 3

(EX. B 2505)