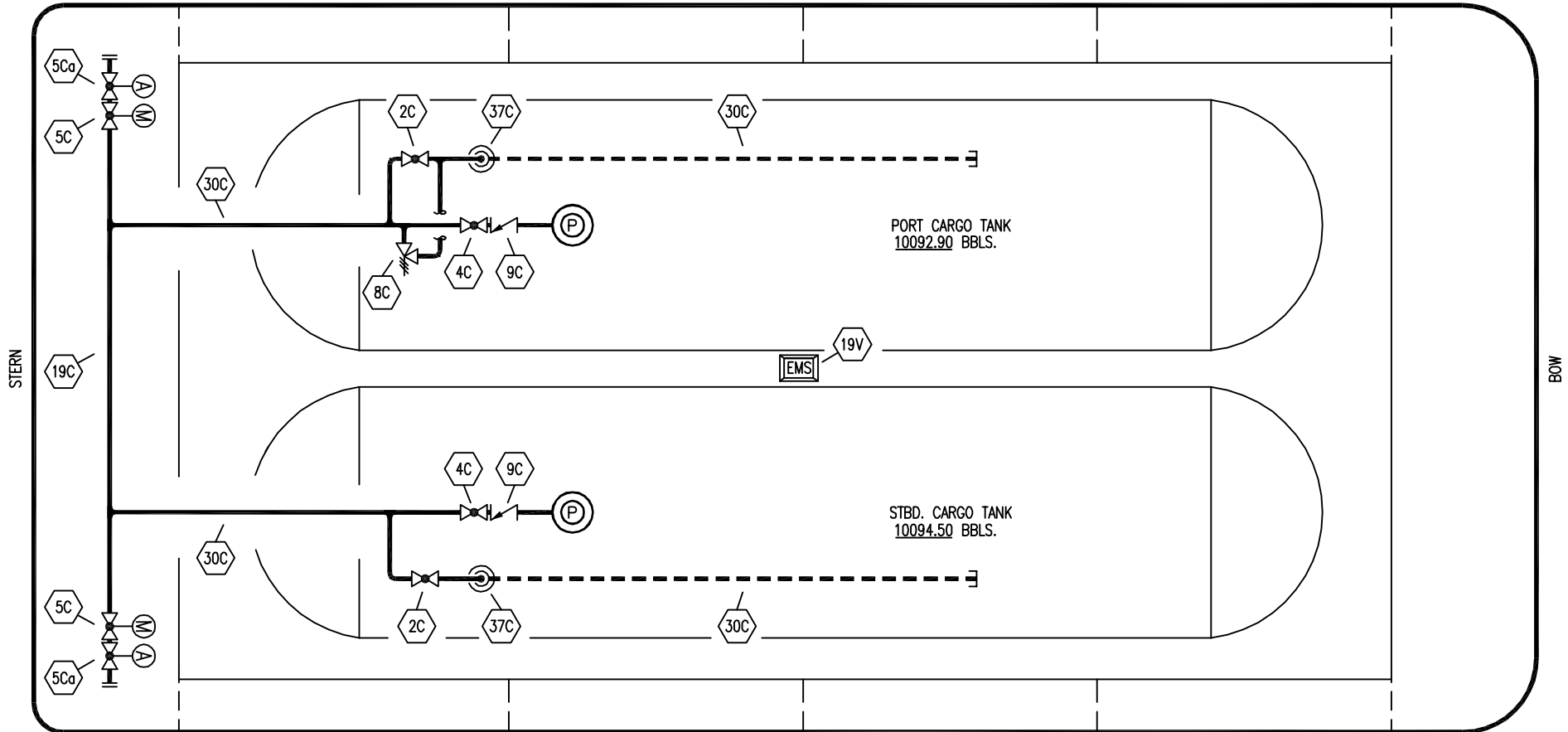


PORT



STARBOARD

- | NO  | DESCRIPTION                                  |
|-----|--|
| 2C  | LOAD VALVE                                   |
| 4C  | DISCHARGE VALVE                              |
| 5C  | HEADER VALVE (MANUAL)                        |
| 5Ca | HEADER VALVE (QUICK CLOSE AIR/HYD. OPERATED) |
| 8C  | RELIEF VALVE                                 |
| 9C  | CHECK VALVE                                  |
| 19C | CARGO HEADER                                 |
| 19V | EMERGENCY SHUTDOWN SYSTEM                    |
| 30C | CARGO PIPELINE                               |
| 37C | CARGO DROP                                   |

— ABOVE DECK PIPING  
 - - - ABOVE DECK PIPING

NOTE: CARGO PUMPS DRIVEN BY ELECTRIC MOTORS

AVONDALE SHIPYARD - EX: B 2300

REV.	DATE	BY	CHK	APP	REVISION DESCRIPTION
0	06/15/09	LT	RB	OF	APPROVED

**KIRBY INLAND MARINE** 

**CARGO  
 PIPING FLOW DIAGRAM**

SCALE: NONE  
 PAGE: 1 OF 1

**KIRBY 20850**

REV. 0