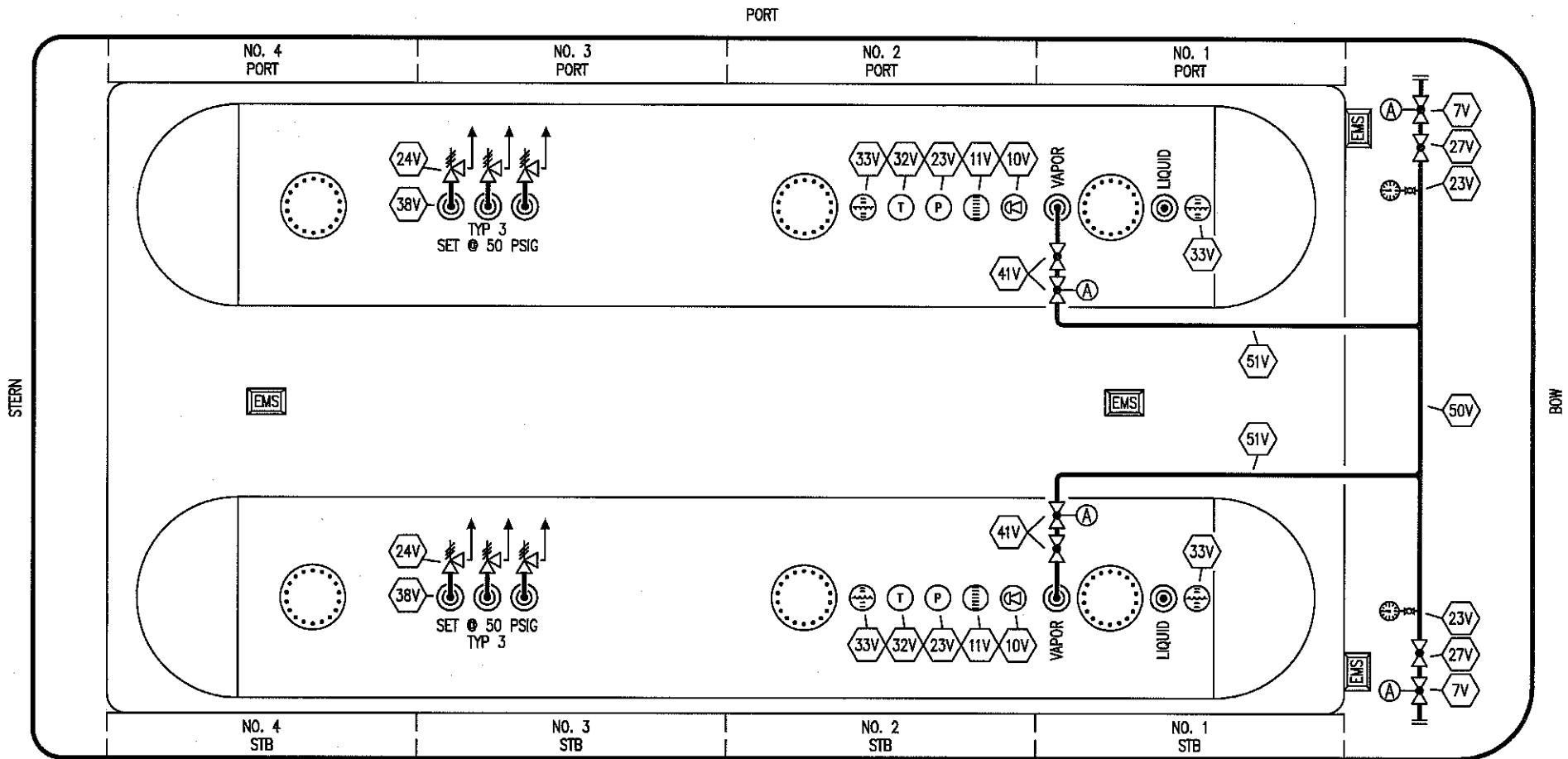


NO	DESCRIPTION	NO	DESCRIPTION
1C	8" CARGO TANK VALVE	30C	8" CARGO PIPELINE
2C	8" LOAD VALVE	35C	CROSSOVER VALVE
3C	MASTER SUCTION VALVE	37C	CARGO DROP
4C	DISCHARGE VALVE	(A)	AUTOMATIC
5C	8" HEADER VALVE	—	ABOVE DECK PIPING
8C	6" RELIEF VALVE		
9C	8" CHECK VALVE		
13C	8" BLOCK VALVE		
16C	2" DISCHARGE PRESSURE GAUGE		
19C	8" CARGO HEADER		

**FOR PROPYLENE
OXIDE
SERVICE**

NOTE: VALVES ARE MANUALLY OPERATED UNLESS OTHERWISE SPECIFIED.

					KIRBY INLAND MARINE		
							CARGO PIPING FLOW DIAGRAM
2	02/16/17	WFB	DDA		REVISED PER CLIENT COMMENTS		
1	04/12/12	DCB	DDA		ADDED MASTER SUCTION VALVES		
0	05/07/09	LT	RB	OF	APPROVED		
REV.	DATE	BY	CHK	APP	REVISION DESCRIPTION	SCALE: NONE	
						PAGE: 1 OF 3	
						KIRBY 19801	REV. 2



NO	DESCRIPTION	NO	DESCRIPTION
7V	8" HEADER VALVE	41V	8" VAPOR TANK VALVE
10V	HIGH LEVEL/OVERFILL ALARM	50V	8" VAPOR HEADER
11V	1 METER GAUGE STICK	51V	8" VAPOR PIPELINE
23V	PRESSURE GAUGE	—	ABOVE DECK PIPING
24V	6" PRESSURE RELIEF VALVE	(A)	AUTOMATIC
27V	8" VALVE		
32V	TEMPERATURE GAUGE		
33V	DIGITAL FLOAT LEVEL GAUGE		
38V	VAPOR DROP OR PENETRATION (⊙)		

NOTE: VALVES ARE MANUALLY OPERATED UNLESS OTHERWISE SPECIFIED.

REV.	DATE	BY	CHK	APP	REVISION DESCRIPTION
1	02/16/17	WFB	DDA		REVISED PER CLIENT COMMENTS
0	05/04/09	WK	RB	OF	APPROVED

KIRBY INLAND MARINE 

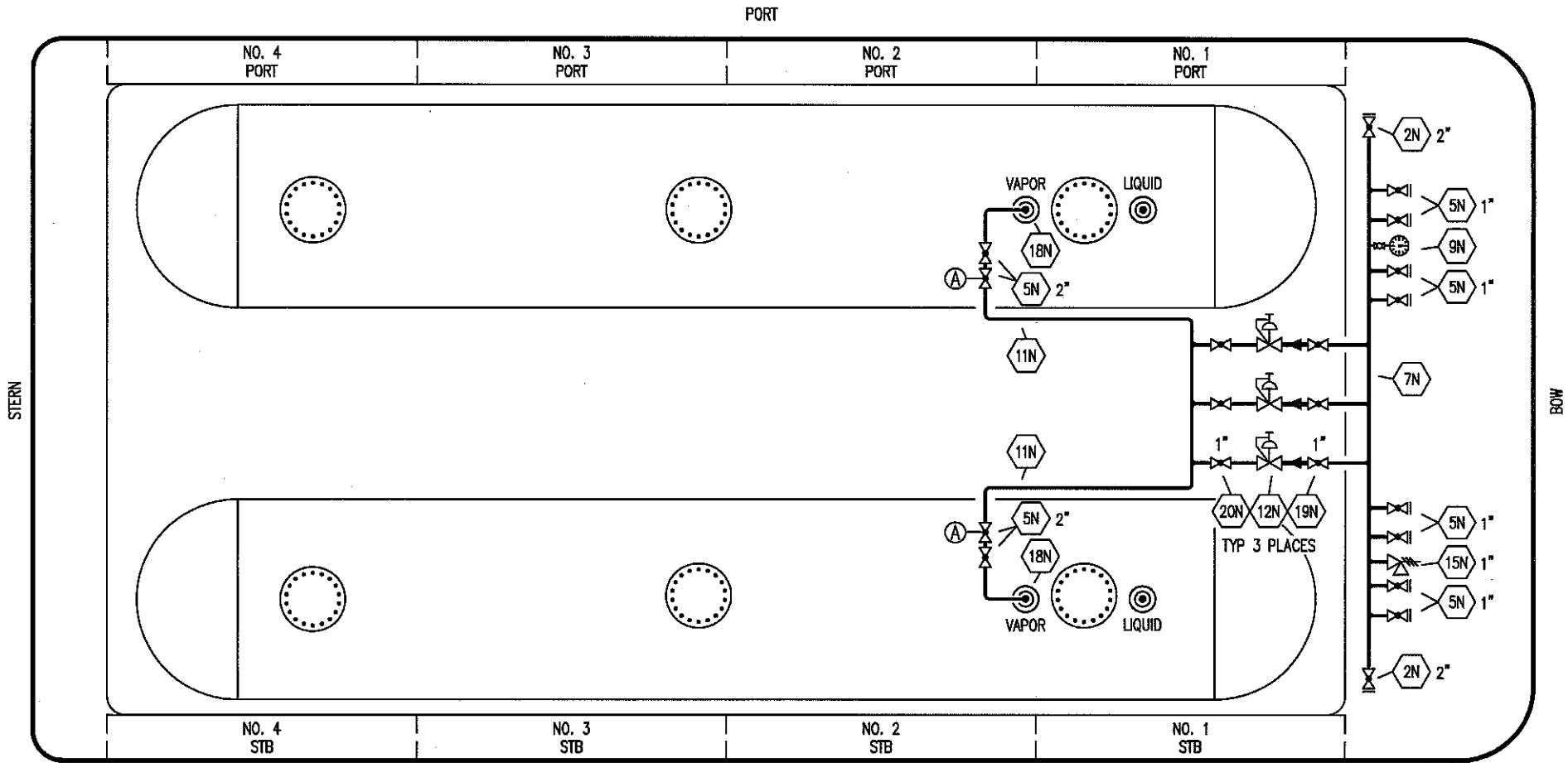
**VAPOR
PIPING FLOW DIAGRAM**

SCALE: NONE
PAGE: 2 OF 3

KIRBY 19801

REV. **1**

**FOR PROPYLENE
OXIDE
SERVICE**



**FOR PROPYLENE
OXIDE
SERVICE**

- | | | | |
|-----------|---------------------------|-----------|---------------------|
| NO | DESCRIPTION | NO | DESCRIPTION |
| 2N | NITROGEN SHORE CONNECTION | 18N | PENETRATION |
| 5N | N2 SUPPLY VALVE | 19N | REGULATOR SUPPLY |
| 7N | NITROGEN HEADER | 20N | REGULATOR DISCHARGE |
| 9N | N2 GAUGE | — | ABOVE DECK PIPING |
| 11N | NITROGEN PIPELINE | (A) | AUTOMATIC |
| 12N | NITROGEN REGULATOR | | |
| 15N | N2 RELIEF VALVE | | |

NOTE: VALVES ARE MANUALLY OPERATED UNLESS OTHERWISE SPECIFIED.

					KIRBY INLAND MARINE	
					NITROGEN PIPING FLOW DIAGRAM	
0	02/16/17	WFB	DDA		ISSUED FOR REVIEW	SCALE: NONE
REV.	DATE	BY	CHK	APP	REVISION DESCRIPTION	PAGE: 3 OF 3
					KIRBY 19801	REV. 0