


- | | |
|----|----------------------|
| NO | DESCRIPTION |
| 1C | CARGO TANK VALVE |
| 2C | LOAD VALVE |
| 3C | MASTER SUCTION VALVE |
| 4C | DISCHARGE VALVE |
| 5C | HEADER VALVE |
| 8C | RELIEF VALVE |
| 9C | CHECK VALVE |


- | | |
|-----|--|
| NO | DESCRIPTION |
| 13C | CARGO PIPING BLOCK VALVE |
| 15C | BYPASS VALVE AROUND CHECK |
| 19C | CARGO HEADER |
| 26C | PUMP CAVITY DRAIN VALVE |
| 30C | CARGO PIPELINE |
| 37C | CARGO DROP  |
| 41C | HIGH SUCTION VALVE |

— ABOVE DECK PIPING
 - - - BELOW DECK PIPING

NOTE 1: CONTAINMENT P&S

TRINITY MARINE -- EX: N/A

REV.	DATE	BY	CHK	APP	REVISION DESCRIPTION
2	11/20/17	WFB	DDA		REMOVED 6C SALVAGE VALVE
1	4/10/13	DCB	DDA		REVISED PER CUSTOMER
0	03/22/10	DB	RB	OF	APPROVED



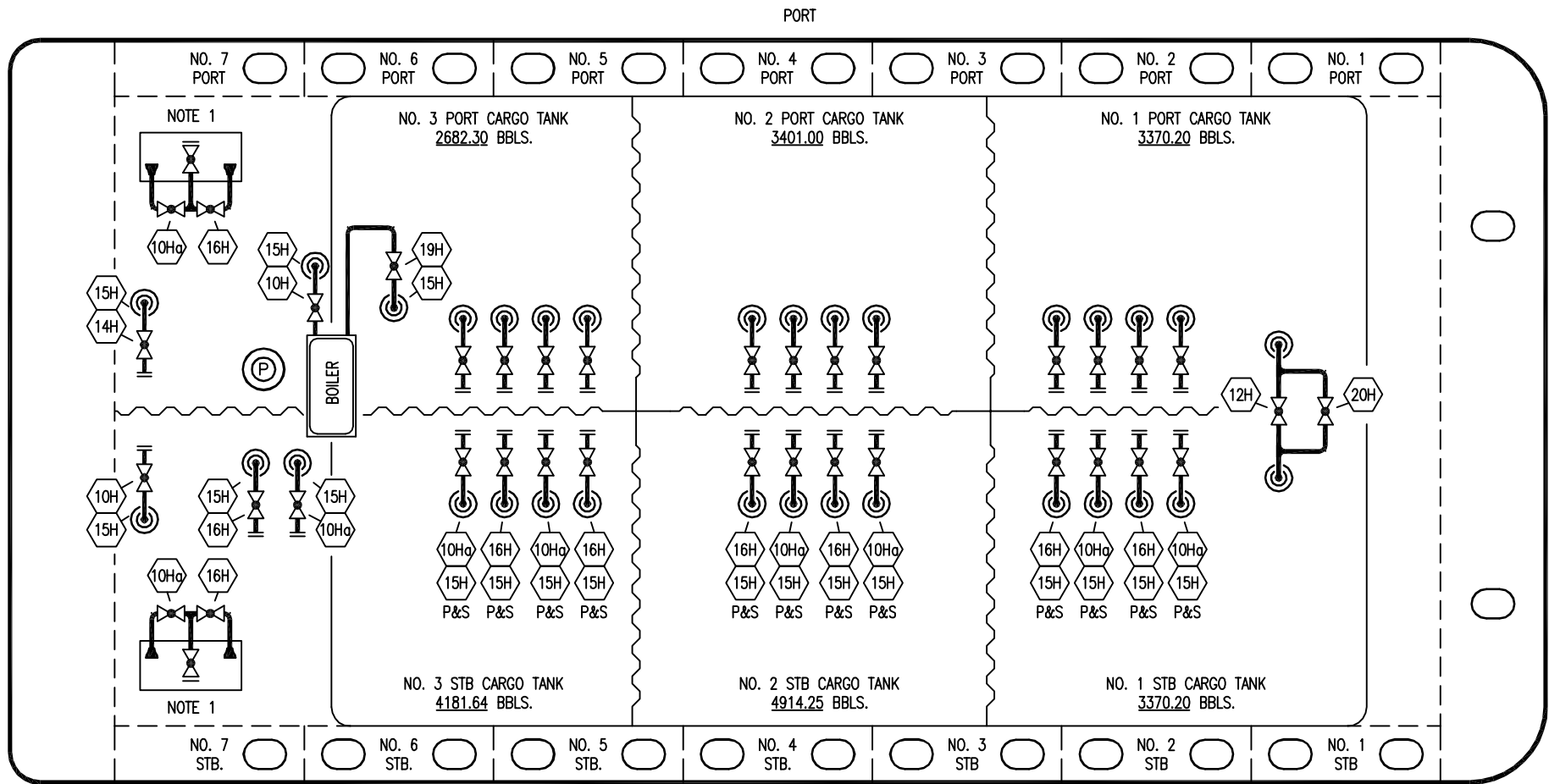
KIRBY INLAND MARINE

CARGO

PIPING FLOW DIAGRAM

KIRBY 18700


SCALE: NONE	REV. 2
PAGE: 1 OF 3	

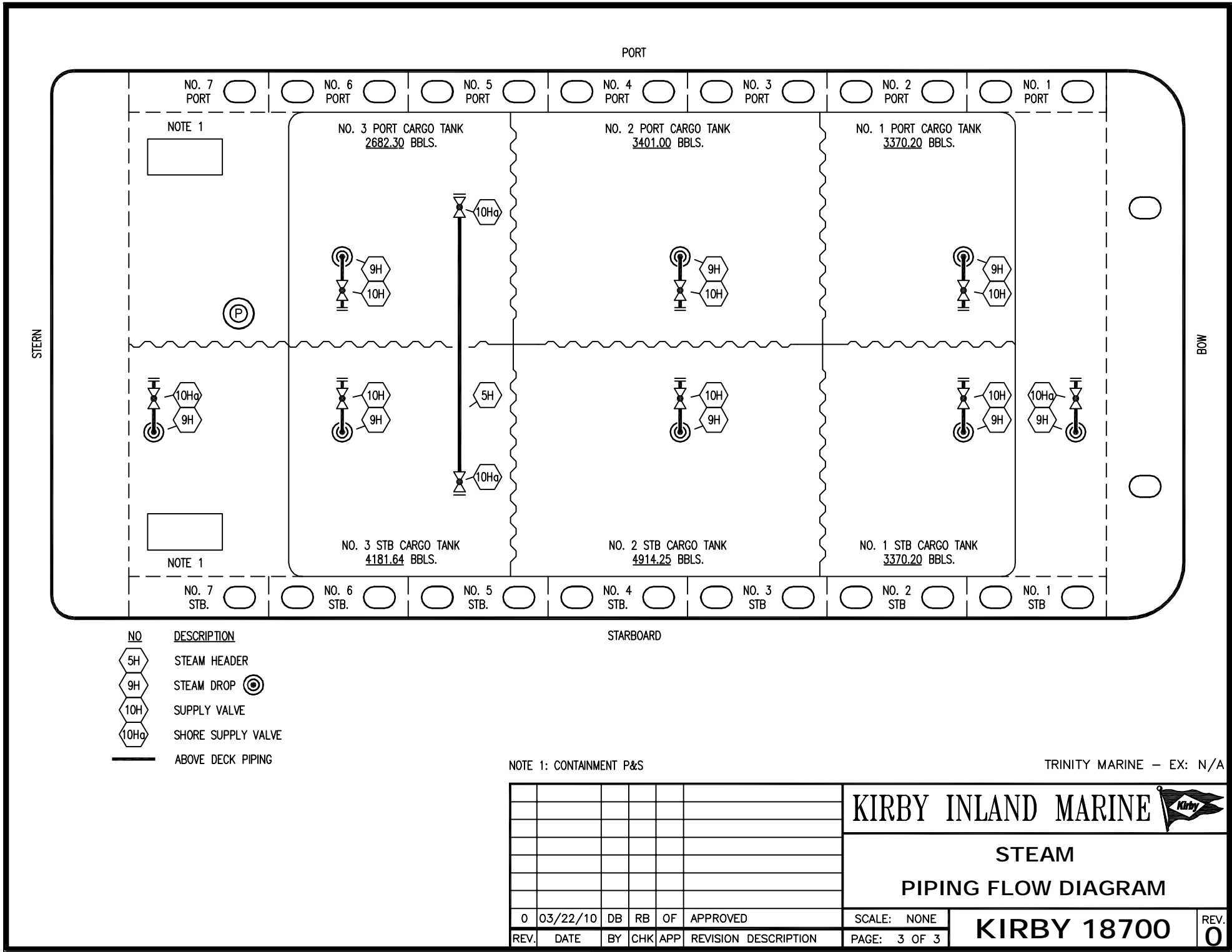


- | NO | DESCRIPTION |
|---------------------|--------------------|
| 10H | SUPPLY VALVE |
| 10Ha | COIL SUPPLY VALVE |
| 12H | PRESSURE REGULATOR |
| 14H | RETURN COIL VALVE |
| 15H | HOT OIL DROP |
| 16H | ISOLATION VALVE |
| 19H | RETURN VALVE |
| 20H | BYPASS VALVE |
| — ABOVE DECK PIPING | |

NOTE 1: CONTAINMENT P&S

TRINITY MARINE - EX: N/A


						KIRBY INLAND MARINE 	
						KIRBY 18700	
0	03/22/10	DB	RB	OF	APPROVED	SCALE: NONE	
REV.	DATE	BY	CHK	APP	REVISION DESCRIPTION	PAGE: 2 OF 3	



- | | |
|------|--------------------|
| NO | DESCRIPTION |
| 5H | STEAM HEADER |
| 9H | STEAM DROP (C) |
| 10H | SUPPLY VALVE |
| 10Hq | SHORE SUPPLY VALVE |
| — | ABOVE DECK PIPING |

NOTE 1: CONTAINMENT P&S

TRINITY MARINE - EX: N/A

						KIRBY INLAND MARINE 	
0	03/22/10	DB	RB	OF	APPROVED	SCALE: NONE	KIRBY 18700
REV.	DATE	BY	CHK	APP	REVISION DESCRIPTION	PAGE: 3 OF 3	