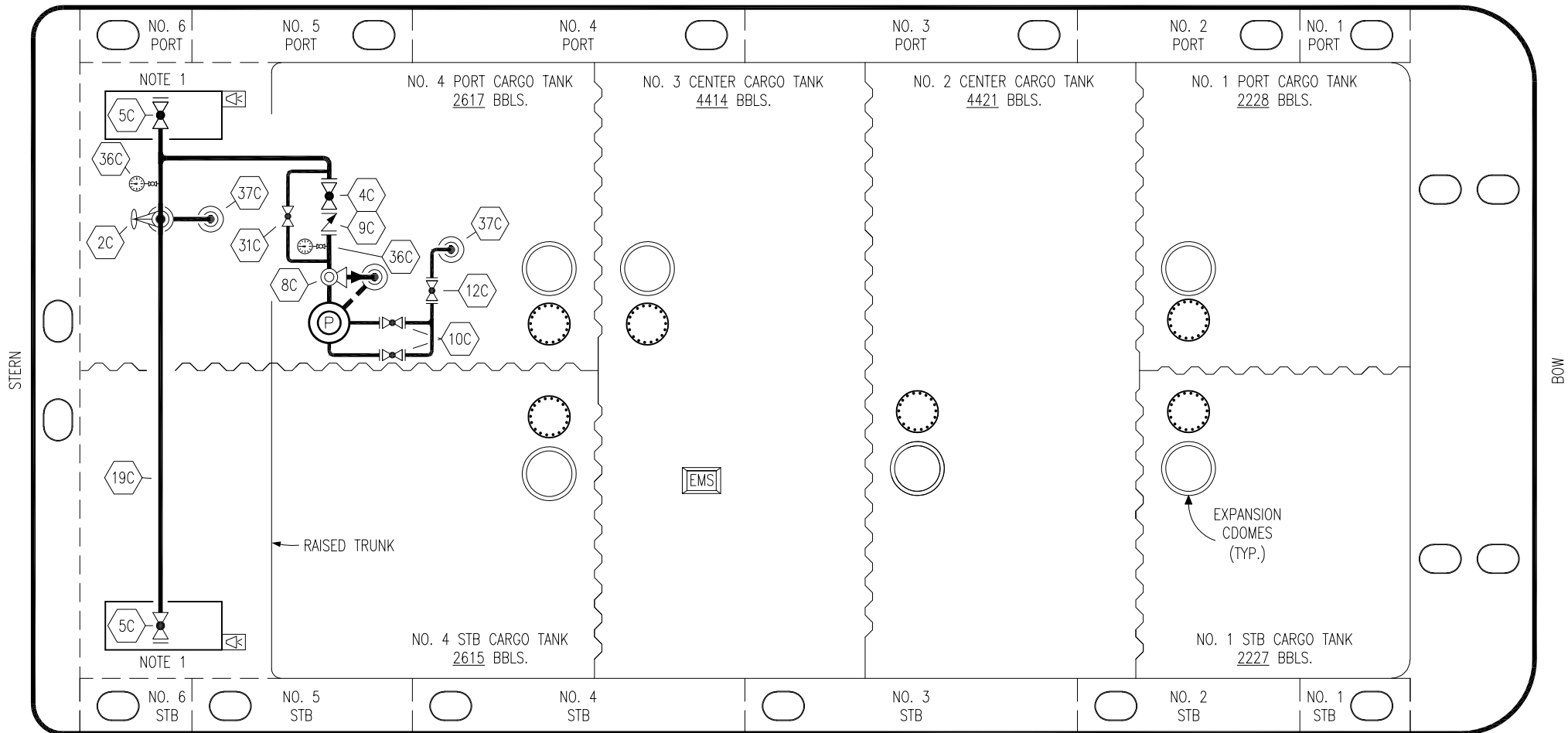


PORT



STARBOARD

NO	DESCRIPTION	NO	DESCRIPTION
1C	CARGO TANK VALVE	19C	CARGO HEADER
2C	LOAD VALVE	31C	BYPASS VALVE
4C	DISCHARGE VALVE	36C	PRESSURE GAUGE
5C	HEADER VALVE	37C	CARGO DROP
8C	RELIEF VALVE	—	—
9C	CHECK VALVE	—	—
10C	BURP VALVE	—	—
12C	BURP VALVE RETURN TO CARGO TANK	—	—

NOTE 1: CONTAINMENT P/S

PLATZER SHIPYARD - DXE 1903

REV.	DATE	BY	CHK	APP	REVISION DESCRIPTION
3	03/15/21	MRV	DDA	CW	REVISED PER CLIENT COMMENTS
2	11/02/10	RB	RB	OF	ADD LOAD VLVS./DROPS
1	07/07/10	RB	RB	MD	DELETE CARGO HEADERS
0	03/22/10	RB	RB	OF	APPROVED

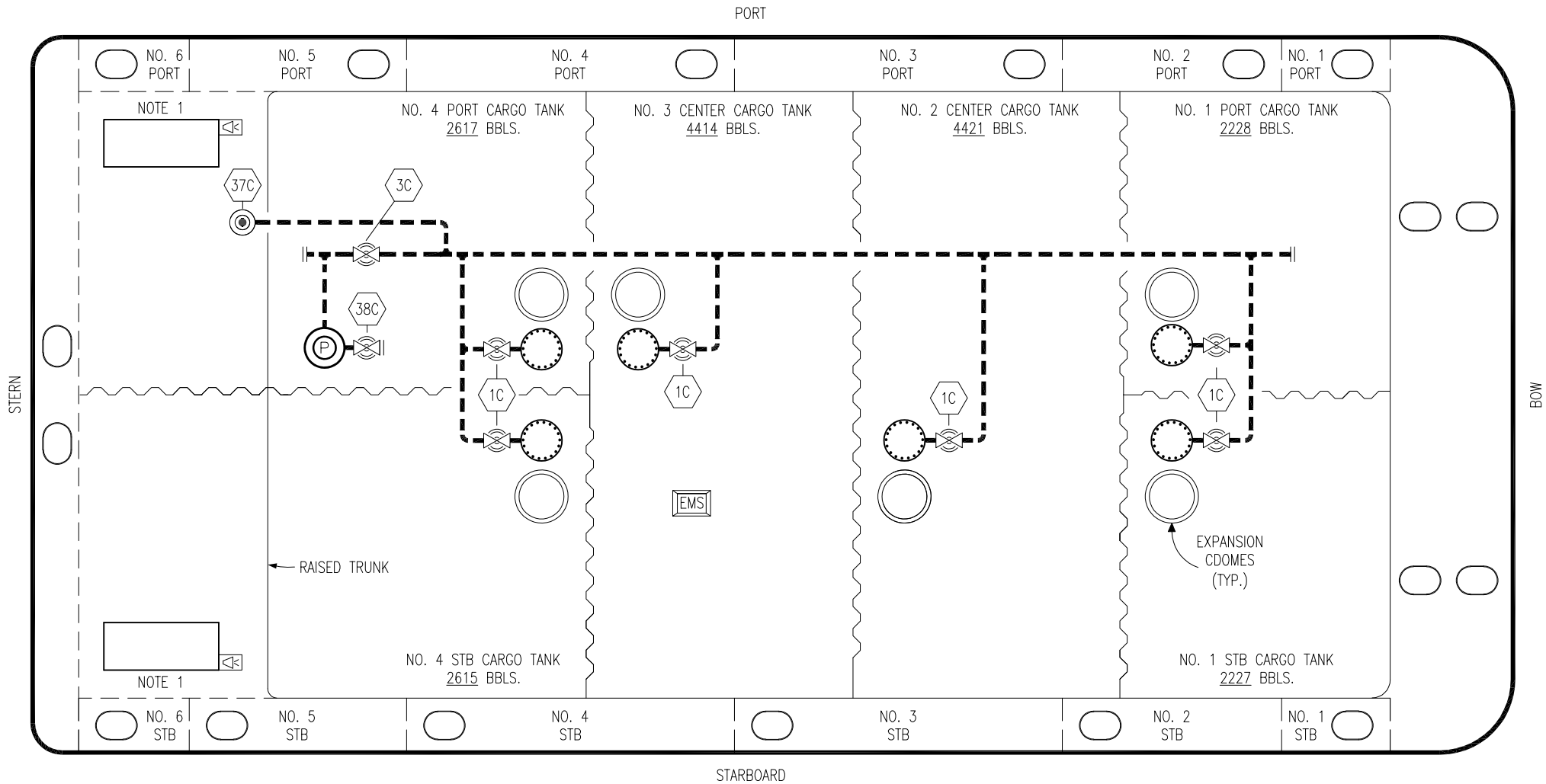
KIRBY INLAND MARINE 

**ABOVE DECK CARGO
PIPING FLOW DIAGRAM**

SCALE: NONE
PAGE: 1 OF 5

KIRBY 18603

REV. **3**




- | | | | |
|----|----------------------|-----|--------------------------|
| NO | DESCRIPTION | NO | DESCRIPTION |
| 1C | CARGO TANK VALVE | 30C | CARGO PIPELINE |
| 2C | LOAD VALVE | 37C | CARGO DROP |
| 3C | MASTER SUCTION VALVE | 38C | DEEPWELL CAN DRAIN VALVE |
| | | --- | BELOW DECK PIPING |

NOTE 1: CONTAINMENT P/S

PLATZER SHIPYARD - DXE 1903

0	03/15/21	MRV	DDA	CW	ISSUED FOR APPROVAL
REV.	DATE	BY	CHK	APP	REVISION DESCRIPTION



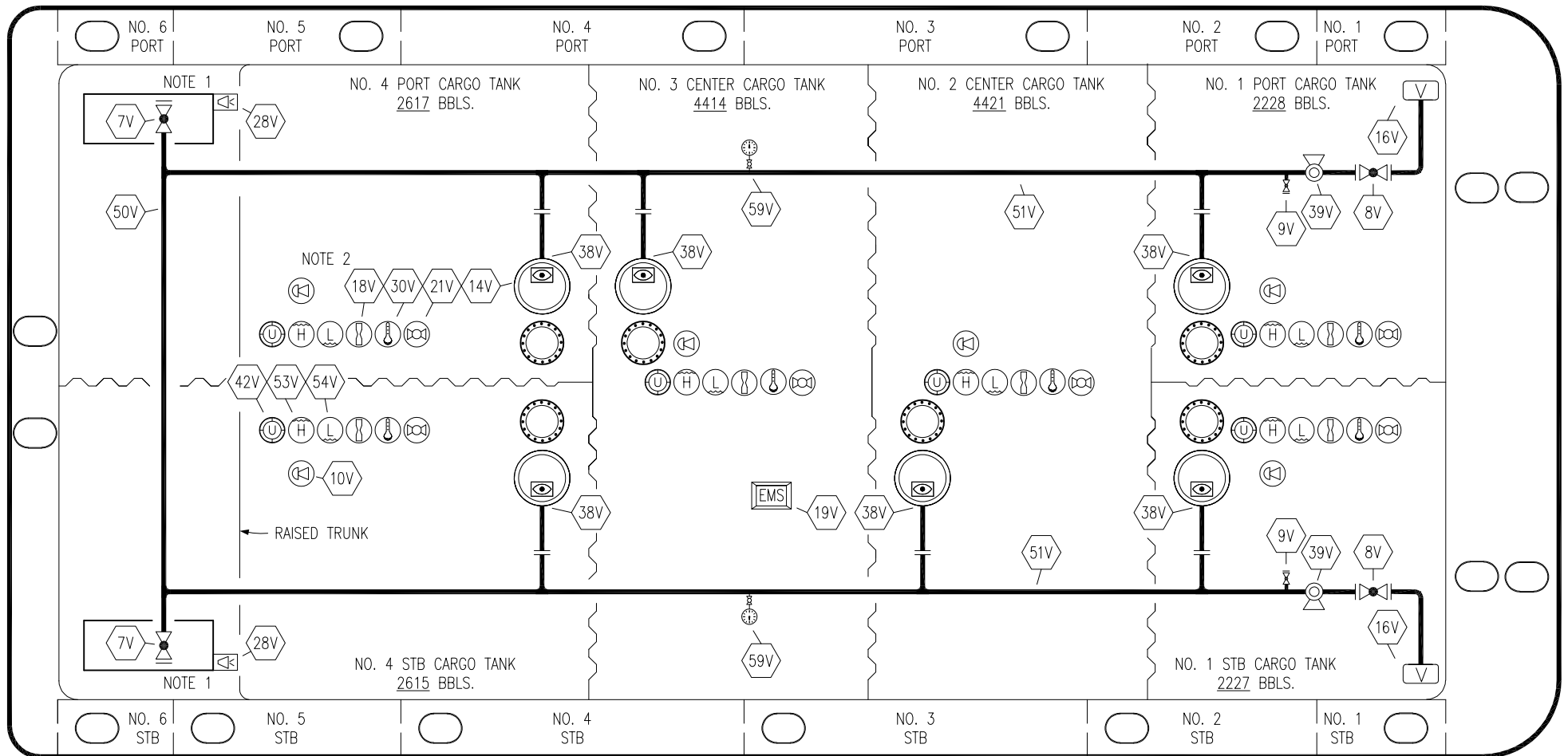
KIRBY INLAND MARINE

**BELOW DECK CARGO
PIPING FLOW DIAGRAM**

KIRBY 18603

SCALE: NONE	REV. 0
PAGE: 2 OF 5	

PORT



STERN

BOW

STARBOARD

NO	DESCRIPTION	NO	DESCRIPTION
7V	HEADER VALVE	38V	VAPOR PENETRATION
8V	VENT STACK VALVE	39V	PRESSURE/VACUUM VALVE
9V	DRAIN VALVE	42V	ULLAGE HATCH
10V	HIGH LEVEL/OVERFILL ALARM	50V	VAPOR HEADER
14V	SIGHT GLASS W/GAUGE TREE	51V	VAPOR PIPELINE
16V	VAPOR VENT STACK	53V	HIGH LEVEL GAUGE
18V	RESTRICTIVE GAUGE TUBE	54V	LOW LEVEL GAUGE
19V	EMERGENCY ENGINE SHUT DOWN	59V	PRESSURE VACUUM GAUGE
21V	HERMETIC GAUGE	—	ABOVE DECK PIPING
28V	DOCK CONNECTION ALARM		
30V	THERMAL WELL		

NOTE 1: CONTAINMENT P/S
NOTE 2: TYPICAL RIGGING IN EACH TANK.

PLATZER SHIPYARD - DXE 1903

REV.	DATE	BY	CHK	APP	REVISION DESCRIPTION
2	03/15/21	MRV	DDA	CW	REVISED PER CLIENT COMMENTS
1	11/02/10	RB	RB	OF	DELETE 4 51Vs
0	03/22/10	RB	RB	OF	APPROVED

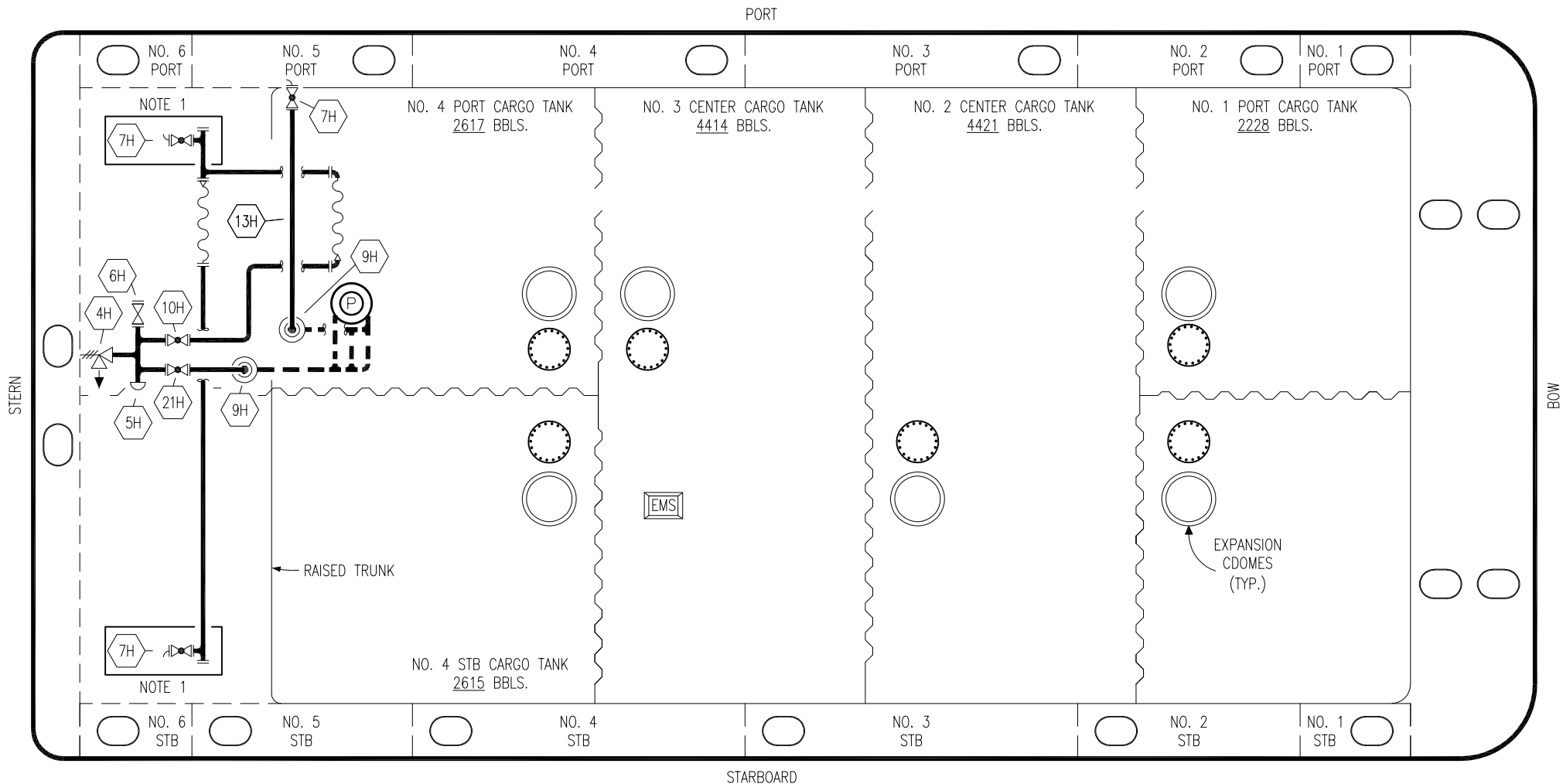
KIRBY INLAND MARINE 

**VAPOR
PIPING FLOW DIAGRAM**

SCALE: NONE
PAGE: 3 OF 5

KIRBY 18603

REV. **2**

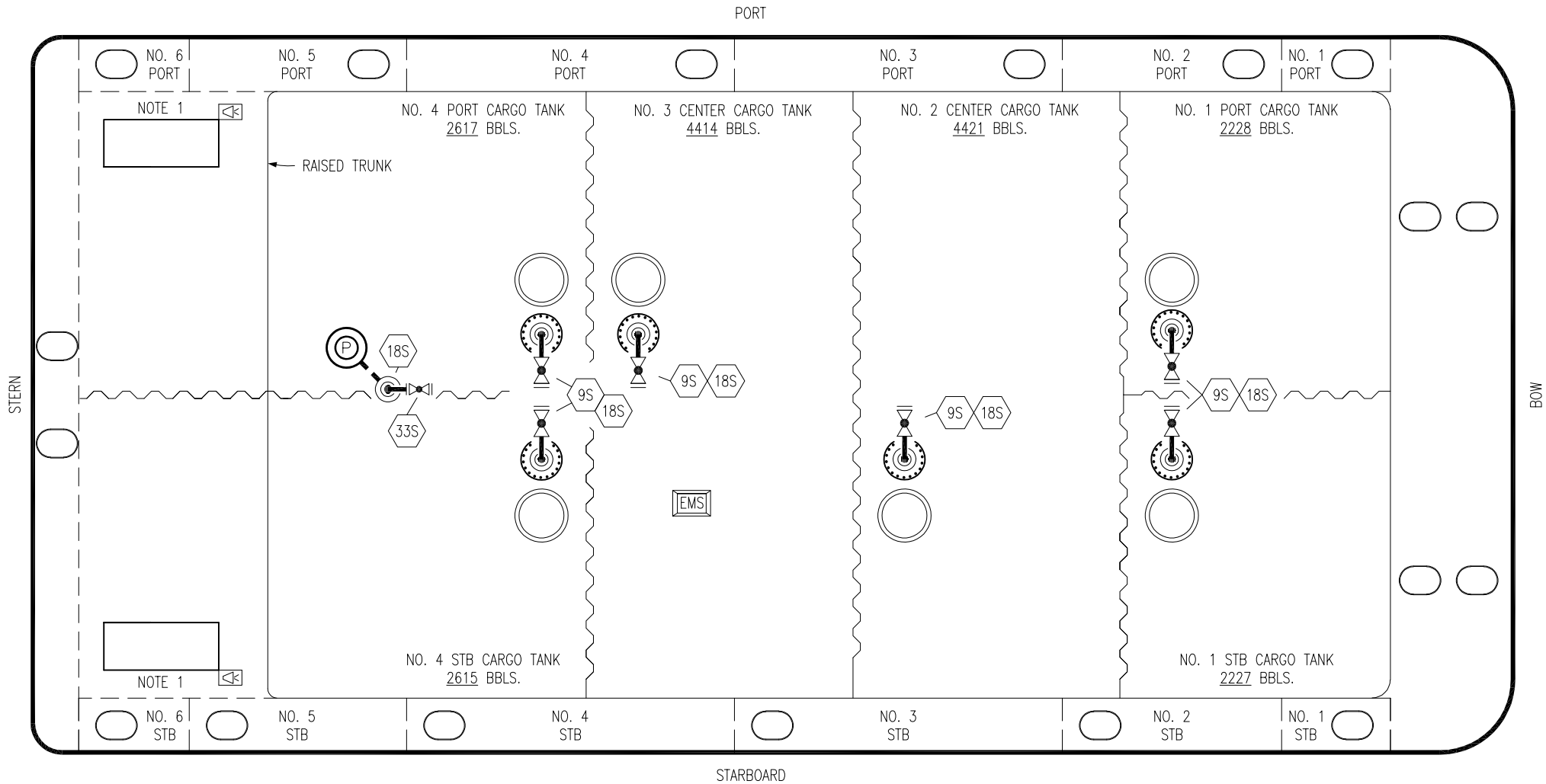


- | | | | |
|-----|--|-------|---------------------------|
| NO | DESCRIPTION | NO | DESCRIPTION |
| 4H | RELIEF VALVE | 13H | STEAM PIPELINE |
| 5H | STEAM HEADER | 21H | DEEPWELL CAN STEAM SUPPLY |
| 6H | HEADER VALVE | — | ABOVE DECK STEAM PIPING |
| 7H | CONDENSATE OUTLET | - - - | BELOW DECK STEAM PIPING |
| 9H | STEAM (HEATING) DROP | — | STEAM S.S. TRACER HOSES |
| 10H | SUPPLY VALVE FOR ABOVE DECK CARGO PIPELINE | | |

NOTE 1: CONTAINMENT PORT & STB.

PLATZER SHIPYARD — DXE 1903

<div style="display: flex; justify-content: space-between; align-items: center;"> <div style="font-size: 2em; font-weight: bold;">KIRBY INLAND MARINE</div> </div>								
STEAM PIPING FLOW DIAGRAM								
0	03/15/21	MRV	DDA	CW	ISSUED FOR APPROVAL	SCALE: NONE	KIRBY 18603	REV
REV.	DATE	BY	CHK	APP	REVISION DESCRIPTION	PAGE: 4 OF 5		0



NOTE 1: CONTAINMENT P/S

PLATZER SHIPYARD – DXE 1903

<div style="display: flex; justify-content: space-between; align-items: center;"> KIRBY INLAND MARINE </div>								
STRIPPING								
PIPING FLOW DIAGRAM								
0	03/15/21	MRV	DDA	CW	ISSUED FOR APPROVAL	SCALE: NONE	KIRBY 18603	REV.
REV.	DATE	BY	CHK	APP	REVISION DESCRIPTION	PAGE: 5 OF 5		0