



- |     |                   |     |   |
|-----|-------------------|-----|---|
| NO  | DESCRIPTION       | NO  | DESCRIPTION   |
| 1C  | CARGO TANK VALVE  | 19C | CARGO HEADER  |
| 2C  | LOAD VALVE        | 30C | CARGO PIPELINE  |
| 2Ca | SPRAY TOP VALVE   | 36C | PRESSURE GAUGE  |
| 2Cb | BOTTOM LOAD VALVE | 37C | CARGO PENETRATION  |
| 5C  | HEADER VALVE      | 38C | STUB/BALL VALVE   |
| 8C  | RELIEF VALVE      | —   | —   |
| 9C  | CHECK VALVE       | (A) | ABOVE DECK PIPING   |
|     |                   |     | Ⓐ AUTOMATIC ACTUATED VALVE  |

NOTE 1: CONTAINMENT P&S  
 NOTE 2: TYPICAL RIGGING IN EACH TANK

MISSNER — EX: DC 525

REV.	DATE	BY	CHK	APP	REVISION DESCRIPTION
2	11/20/23	MRV	DDA	DAR	REVISED PER CLIENT COMMENTS
1	03/07/17	WFB	DDA		REVISED PER CLIENT COMMENTS
0	03/15/10	RB	RB	OF	APPROVED

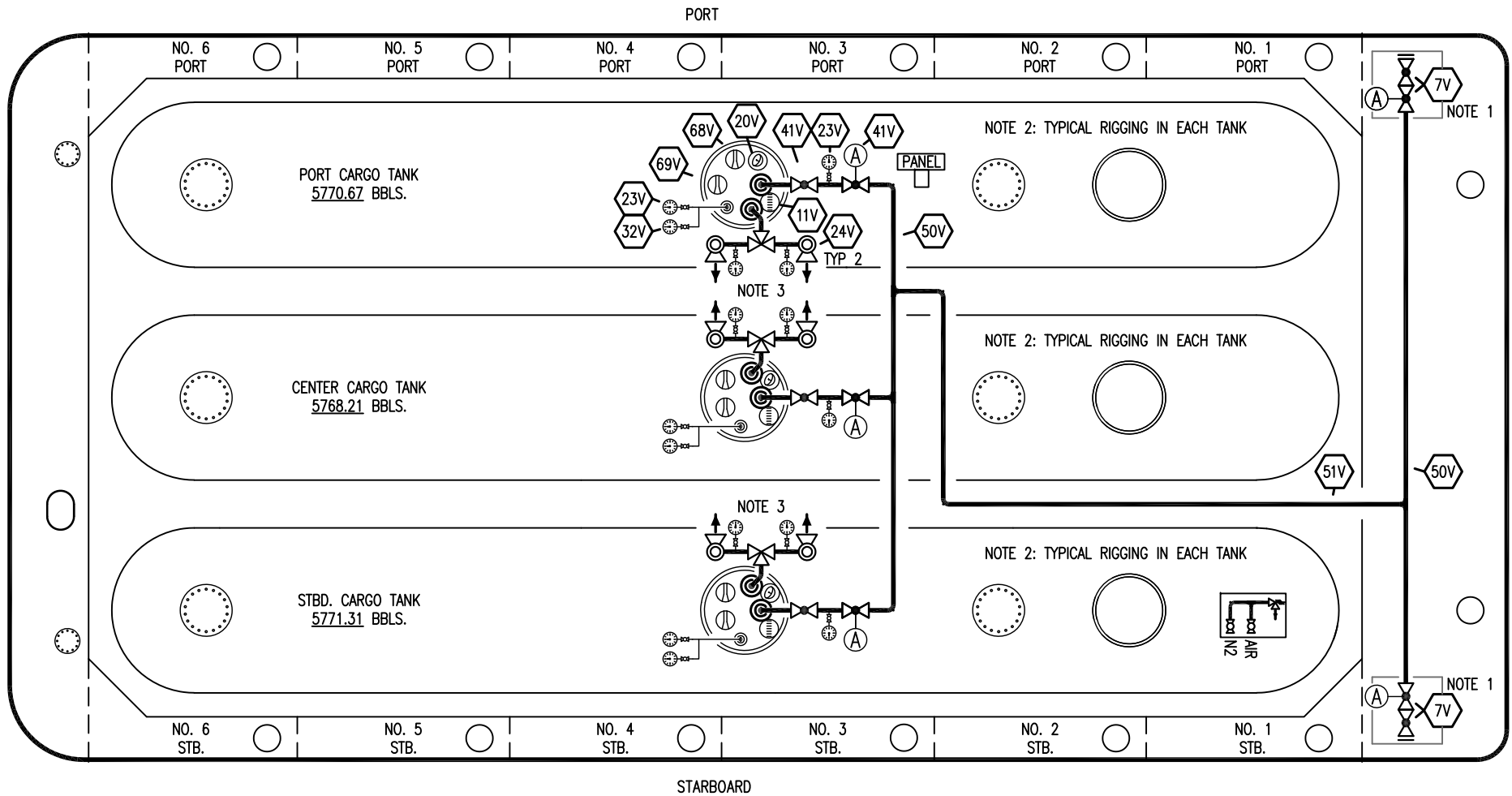
**KIRBY INLAND MARINE** 

**CARGO**

**PIPING FLOW DIAGRAM**

**KIRBY 17801**

SCALE: NONE	REV. 2
PAGE: 1 OF 2	



NO	DESCRIPTION
7V	HEADER VALVE
11V	GAUGE STICK
20V	RADAR GAUGING
23V	PRESSURE GAUGE
24V	PRESSURE RELIEF VALVE
32V	TEMPERATURE GAUGE
38V	VAPOR PENETRATION (⊙)
50V	VAPOR HEADER

NO	DESCRIPTION
51V	VAPOR PIPELINE
41V	VAPOR TANK VALVE
68V	LOW LEVEL SPRAY TUBE
69V	HIGH LEVEL SPRAY TUBE
—	ABOVE DECK PIPING
(A)	AUTOMATIC ACTUATED VALVE

NOTE 1: CONTAINMENT P&S

NOTE 2: TYPICAL RIGGING IN EACH TANK

NOTE 3: TYPICAL RELIEF STACK WITH 3-WAY VALVE AND PRESSURE GAUGES

MISSNER - EX: DC 520

REV.	DATE	BY	CHK	APP	REVISION DESCRIPTION
1	11/20/23	MRV	DDA	DAR	REVISED PER CLIENT COMMENTS
0	03/15/10	RB	RB	OF	APPROVED

**KIRBY INLAND MARINE** 

**VAPOR  
PIPING FLOW DIAGRAM**

SCALE: NONE  
PAGE: 2 OF 2

**KIRBY 17801**

REV. **1**