


NO	DESCRIPTION	NO	DESCRIPTION
1C	CARGO TANK VALVE	35C	CROSSOVER VALVE
5C	HEADER VALVE	36C	PRESSURE GAUGE
7C	STRIPPING BLOCK VALVE	37C	CARGO DROP
8C	RELIEF VALVE	⊙	ABOVE DECK PIPING
13C	CARGO PIPING BLOCK VALVE	---	BELOW DECK PIPING
19C	CARGO HEADER	(A)	AUTOMATIC
30C	CARGO PIPELINE	(M)	MANUAL
34V	LIQUID SPRAY BAR		

REV.	DATE	BY	CHK	APP	REVISION DESCRIPTION
1	04/05/24	AC	DDA	FUL	REVISED PER CLIENT COMMENTS
0	11/28/18	MRV	DDA		APPROVED



**KIRBY INLAND MARINE**

**CARGO**

**PIPING FLOW DIAGRAM**

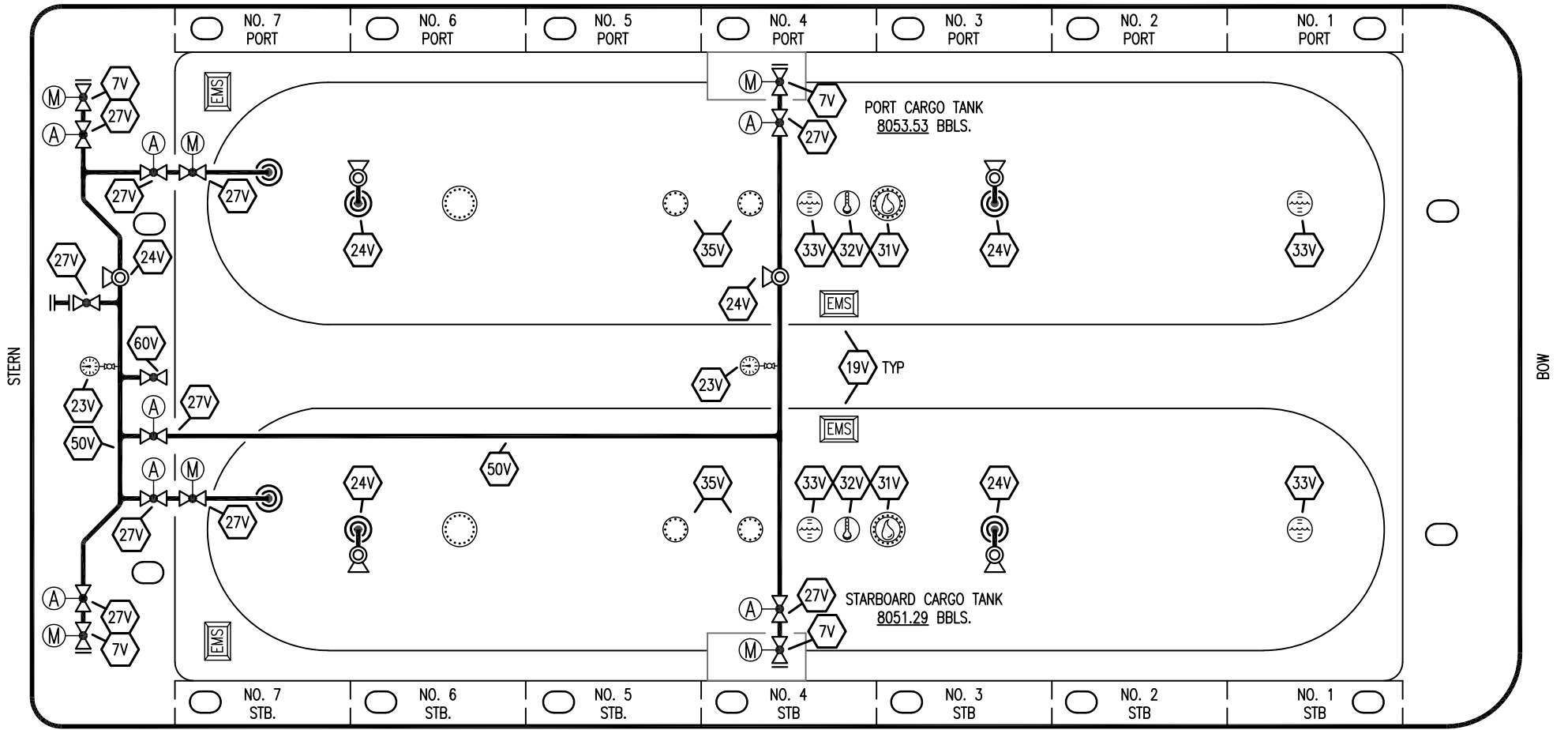
**KIRBY 16849**

SCALE: NONE

PAGE: 1 OF 2

REV. **1**

PORT



STARBOARD

- |           |                            |           |                           |
|-----------|----------------------------|-----------|---------------------------|
| <b>NO</b> | <b>DESCRIPTION</b>         | <b>NO</b> | <b>DESCRIPTION</b>        |
| 5V        | BLOCK VALVE                | 33V       | DIGITAL FLOAT LEVEL GAUGE |
| 7C        | STRIPPING BLOCK VALVE      | 35V       | SPARE (NOZZLE)            |
| 7V        | HEADER VALVE               | 38V       | VAPOR DROP                |
| 19V       | EMERGENCY ENGINE SHUT DOWN | 50V       | VAPOR HEADER              |
| 23V       | PRESSURE GAUGE             | 60V       | CROSSOVER VALVE           |
| 24V       | PRESSURE RELIEF VALVE      | —         | ABOVE DECK PIPING         |
| 27V       | VALVE                      | (A)       | AUTOMATIC                 |
| 31V       | SAMPLE                     | (M)       | MANUAL                    |
| 32V       | TEMPERATURE GAUGE          |           |                           |

1	04/05/24	AC	DDA	FUL	REVISED PER CLIENT COMMENTS
0	11/28/18	MRV	DDA		APPROVED
REV.	DATE	BY	CHK	APP	REVISION DESCRIPTION

**KIRBY INLAND MARINE** 

**VAPOR  
PIPING FLOW DIAGRAM**

SCALE: NONE  
PAGE: 2 OF 2

**KIRBY 16849**

REV. **1**