

NO	DESCRIPTION	NO	DESCRIPTION
1C	CARGO TANK VALVE	35C	CROSSOVER VALVE
5C	HEADER VALVE	36C	PRESSURE GAUGE
7C	STRIPPING BLOCK VALVE	37C	CARGO DROP
8C	RELIEF VALVE	⊙	BELOW DECK PIPING
13C	CARGO PIPING BLOCK VALVE	—	ABOVE DECK PIPING
19C	CARGO HEADER	(A)	AUTOMATIC
30C	CARGO PIPELINE	(M)	MANUAL
34V	LIQUID SPRAY BAR		

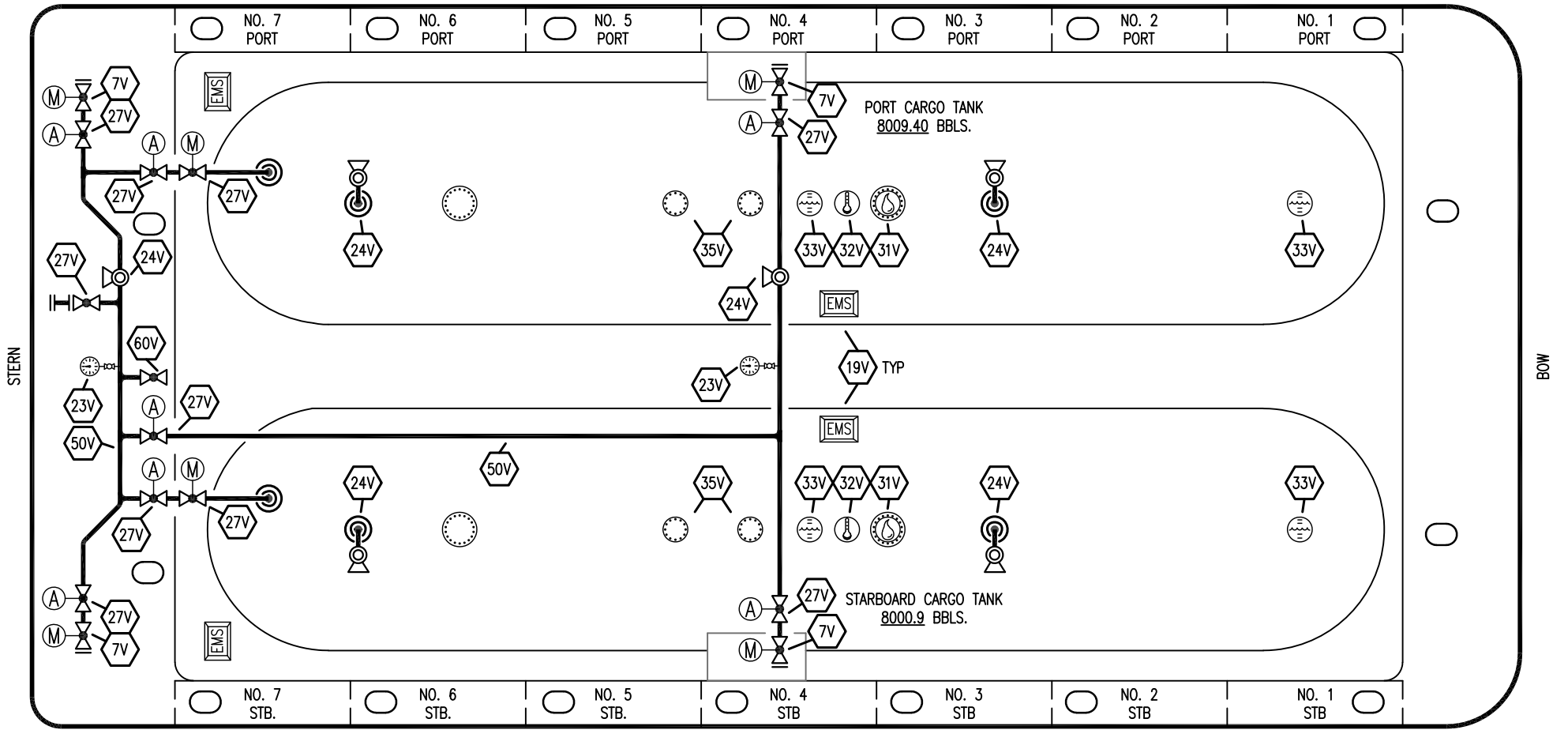
1	04/05/24	AC	DDA	FUL	REVISED PER CLIENT COMMENTS
0	11/28/18	MRV	DDA		APPROVED
REV.	DATE	BY	CHK	APP	REVISION DESCRIPTION

KIRBY INLAND MARINE

**CARGO
PIPING FLOW DIAGRAM**

SCALE: NONE	KIRBY 16846	REV. 1
PAGE: 1 OF 2		

PORT



STARBOARD

- | | | | |
|-----------|----------------------------|-----------|---------------------------|
| NO | DESCRIPTION | NO | DESCRIPTION |
| 5V | BLOCK VALVE | 33V | DIGITAL FLOAT LEVEL GAUGE |
| 7C | STRIPPING BLOCK VALVE | 35V | SPARE (NOZZLE) |
| 7V | HEADER VALVE | 38V | VAPOR DROP |
| 19V | EMERGENCY ENGINE SHUT DOWN | 50V | VAPOR HEADER |
| 23V | PRESSURE GAUGE | 60V | CROSSOVER VALVE |
| 24V | PRESSURE RELIEF VALVE | — | ABOVE DECK PIPING |
| 27V | VALVE | (A) | AUTOMATIC |
| 31V | SAMPLE | (M) | MANUAL |
| 32V | TEMPERATURE GAUGE | | |

1	04/05/24	AC	DDA	FUL	REVISED PER CLIENT COMMENTS
0	11/28/18	MRV	DDA		APPROVED
REV.	DATE	BY	CHK	APP	REVISION DESCRIPTION

KIRBY INLAND MARINE 

**VAPOR
PIPING FLOW DIAGRAM**

SCALE: NONE
PAGE: 2 OF 2

KIRBY 16846

REV. **1**