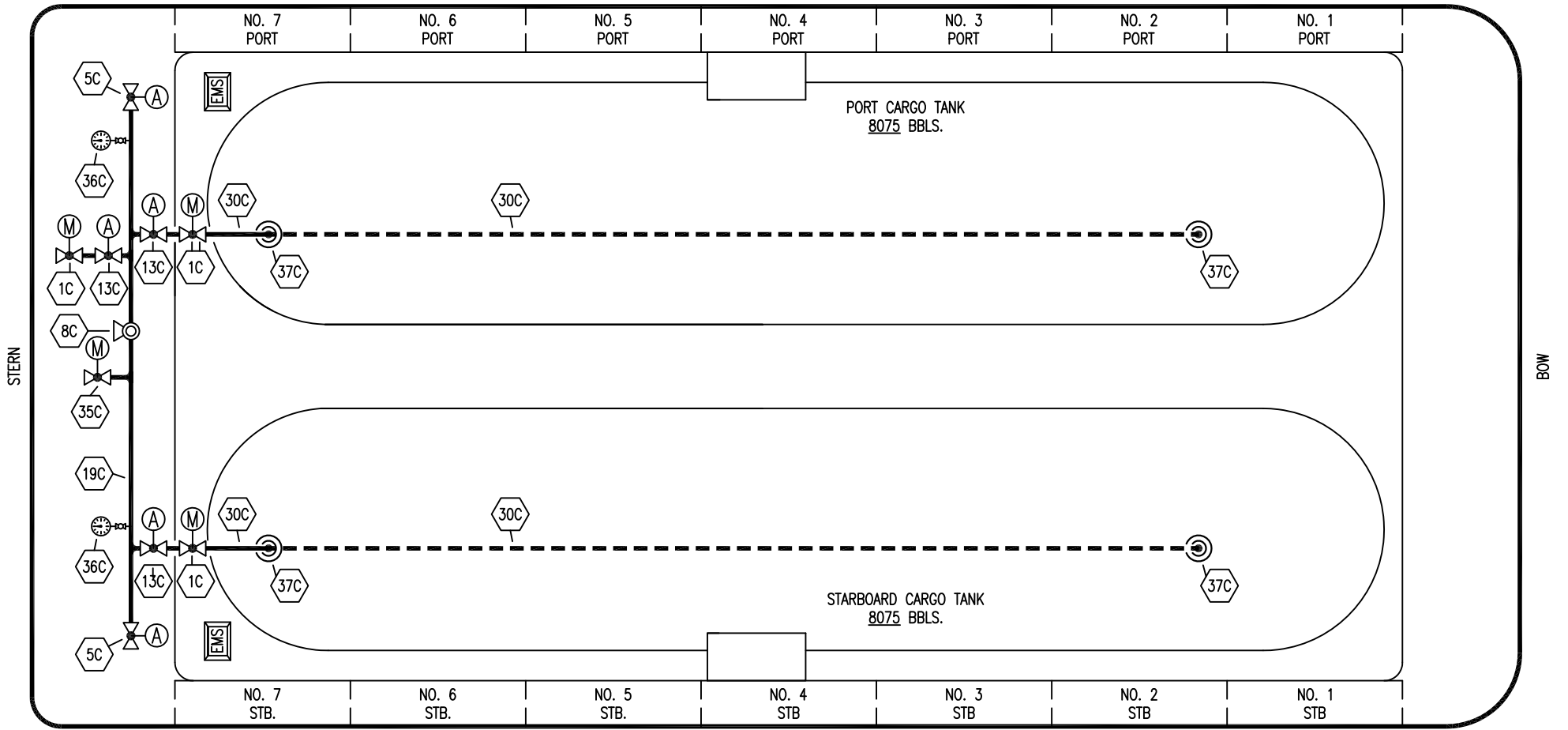


PORT



STARBOARD

STERN

BOW

- | | | | |
|-----------|--------------------------|-----------|--------------------|
| NO | DESCRIPTION | NO | DESCRIPTION |
| 1C | CARGO TANK VALVE | 35C | CROSSOVER VALVE |
| 5C | HEADER VALVE | 36C | PRESSURE GAUGE |
| 7C | STRIPPING BLOCK VALVE | 37C | CARGO DROP |
| 8C | RELIEF VALVE | | ABOVE DECK PIPING |
| 13C | CARGO PIPING BLOCK VALVE | | BELOW DECK PIPING |
| 19C | CARGO HEADER | (A) | AUTOMATIC |
| 30C | CARGO PIPELINE | (M) | MANUAL |
| 34V | LIQUID SPRAY BAR | | |

REV.	DATE	BY	CHK	APP	REVISION DESCRIPTION
2	08/17/17	WFB	DDA		REVISED PER CLIENT COMMENTS
1	07/17/17	WFB	DDA		REVISED PER CLIENT COMMENTS
0	02/04/15	DDA	DDA	OF	APPROVED

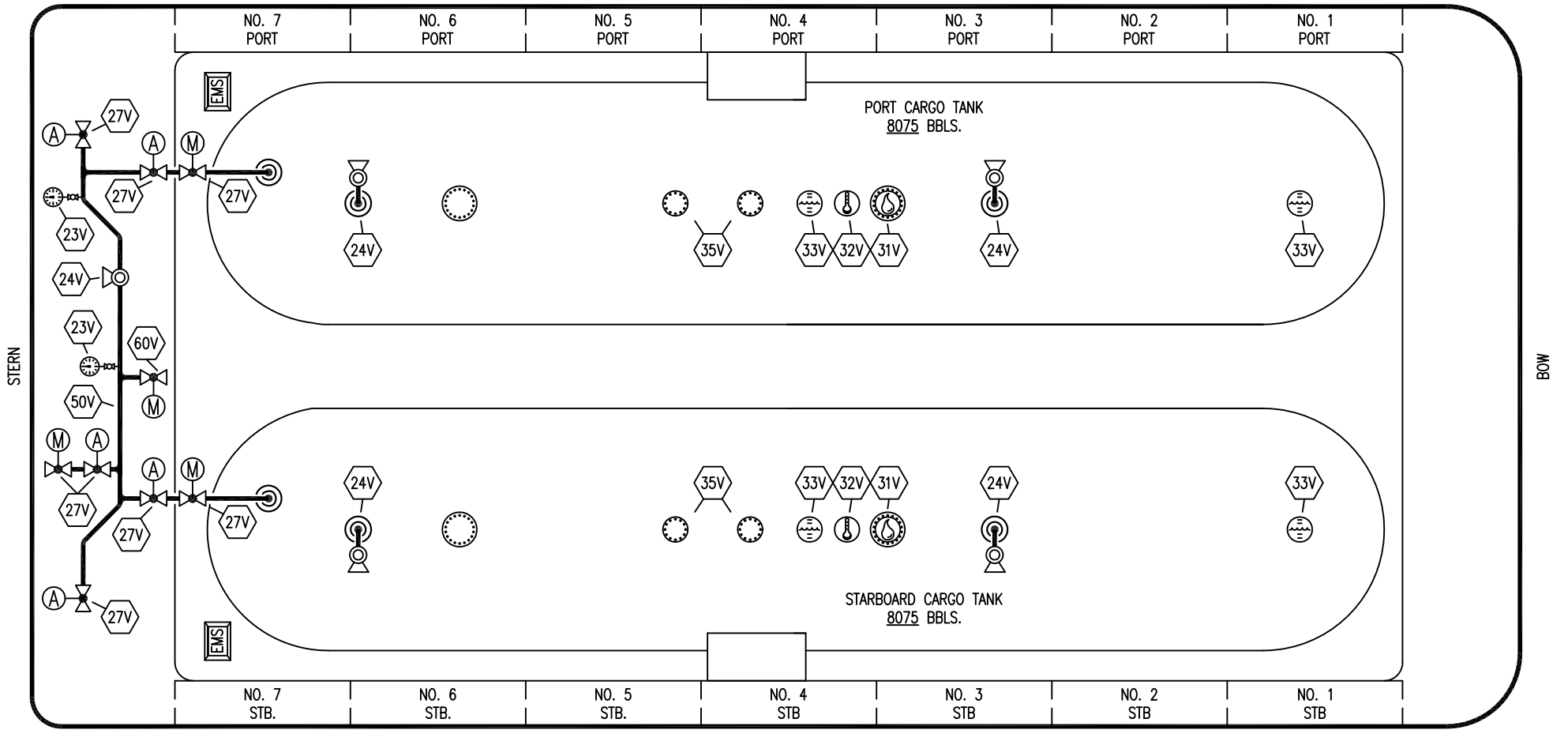
KIRBY INLAND MARINE

CARGO

PIPING FLOW DIAGRAM

SCALE: NONE	KIRBY 16843	REV. 2
PAGE: 1 OF 2		

PORT



STARBOARD

NO	DESCRIPTION	NO	DESCRIPTION
5V	BLOCK VALVE	35V	SPARE (NOZZLE)
7C	STRIPPING BLOCK VALVE	38V	VAPOR DROP (⊙)
7V	HEADER VALVE	50V	VAPOR HEADER
19V	EMERGENCY ENGINE SHUT DOWN	60V	CROSSOVER VALVE
23V	PRESSURE GAUGE	—	ABOVE DECK PIPING
24V	PRESSURE RELIEF VALVE	(A)	AUTOMATIC
27V	VALVE	(M)	MANUAL
31V	SAMPLE		
32V	TEMPERATURE GAUGE		
33V	DIGITAL FLOAT LEVEL GAUGE		

2	08/17/17	WFB	DDA		REVISED PER CLIENT COMMENTS
1	07/17/17	WFB	DDA		REVISED PER CLIENT COMMENTS
0	02/04/15	DDA	DDA	OF	APPROVED
REV.	DATE	BY	CHK	APP	REVISION DESCRIPTION

KIRBY INLAND MARINE

**VAPOR
PIPING FLOW DIAGRAM**

SCALE: NONE	KIRBY 16843	REV. 2
PAGE: 2 OF 2		