

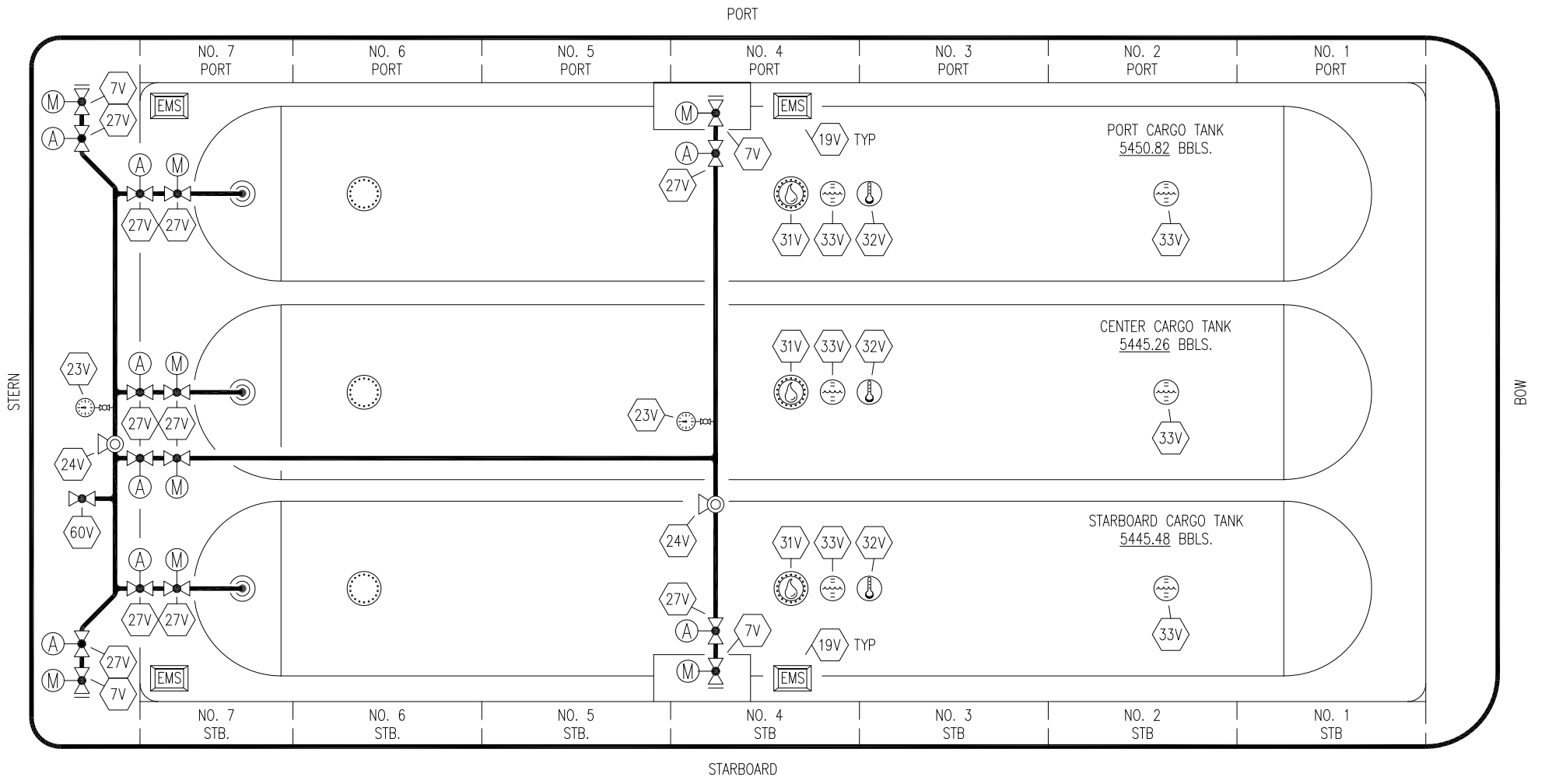
- | | | | |
|-----|--------------------------|-----|-----------------|
| NO | DESCRIPTION | NO | DESCRIPTION |
| 1C | CARGO TANK VALVE | 35C | CROSSOVER VALVE |
| 5C | HEADER VALVE | 36C | PRESSURE GAUGE |
| 7C | STRIPPING BLOCK VALVE | 37C | CARGO DROP |
| 8C | RELIEF VALVE | — | — |
| 13C | CARGO PIPING BLOCK VALVE | — | — |
| 19C | CARGO HEADER | (A) | AUTOMATIC |
| 30C | CARGO PIPELINE | (M) | MANUAL |
| 34V | LIQUID SPRAY BAR | | |

REV.	DATE	BY	CHK	APP	REVISION DESCRIPTION
1	11/20/21	MRV	DDA	DL	REVISED PER CLINET COMMENTS
0	04/13/20	MRV	DDA		ISSUED FOR APPROVAL

KIRBY INLAND MARINE

CARGO
PIPING FLOW DIAGRAM

SCALE: NONE	KIRBY 16837	REV. 1
PAGE: 1 OF 2		



- | | | | |
|-----|----------------------------|-----|---------------------------|
| NO | DESCRIPTION | NO | DESCRIPTION |
| 5V | BLOCK VALVE | 33V | DIGITAL FLOAT LEVEL GAUGE |
| 7C | STRIPPING BLOCK VALVE | 38V | VAPOR DROP |
| 7V | HEADER VALVE | 50V | VAPOR HEADER |
| 19V | EMERGENCY ENGINE SHUT DOWN | 60V | CROSSOVER VALVE |
| 23V | PRESSURE GAUGE | | ABOVE DECK PIPING |
| 24V | PRESSURE RELIEF VALVE | (A) | AUTOMATIC |
| 27V | VALVE | (M) | MANUAL |
| 31V | SAMPLE | | |
| 32V | TEMPERATURE GAUGE | | |

REV.	DATE	BY	CHK	APP	REVISION DESCRIPTION
1	11/20/21	MRV	DDA	DL	REVISED PER CLIENT COMMENTS
0	04/13/20	MRV	DDA		ISSUED FOR APPROVAL

KIRBY INLAND MARINE

VAPOR
PIPING FLOW DIAGRAM

SCALE: NONE	KIRBY 16837	REV. 1
PAGE: 2 OF 2		