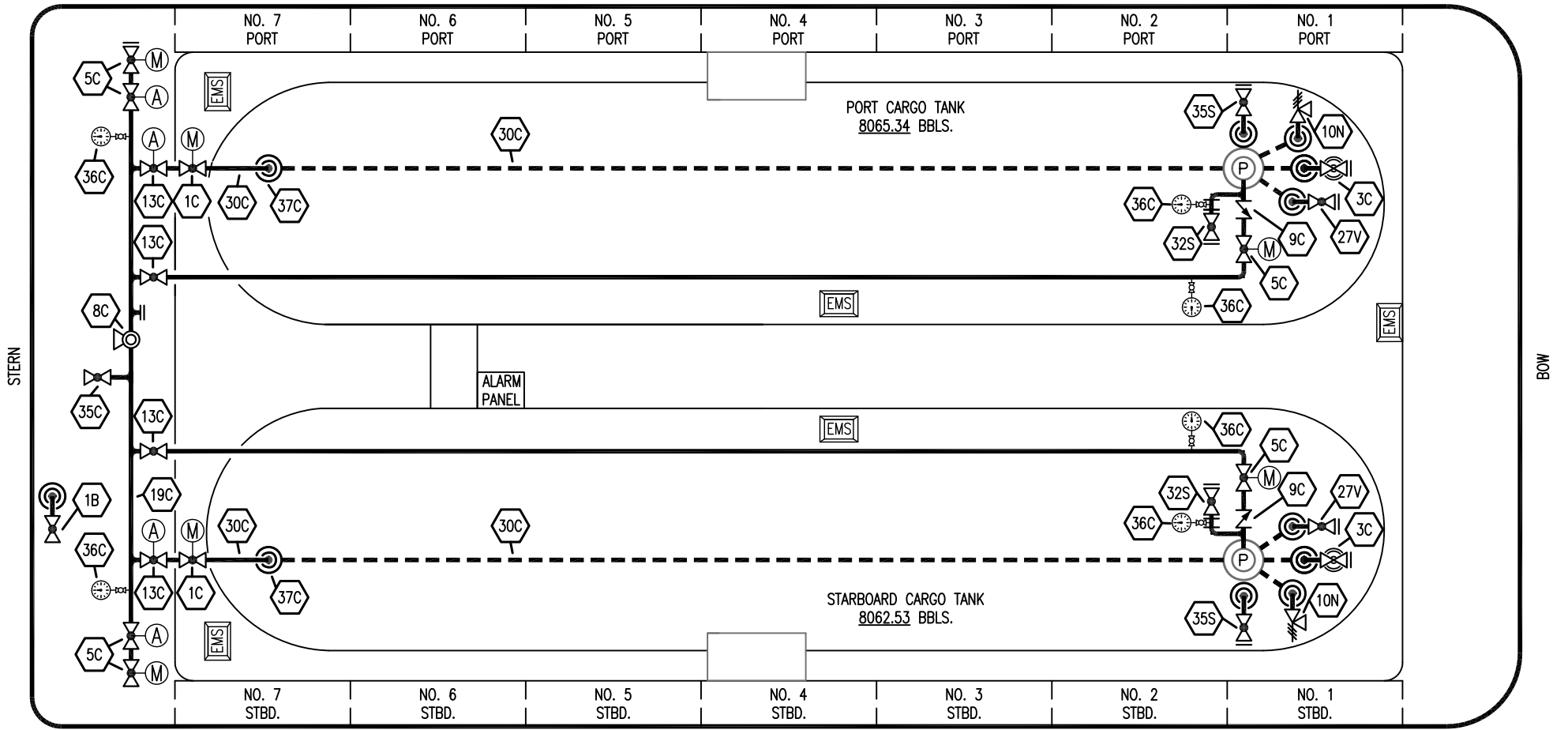


PORT



STARBOARD

- | | | | |
|-----------|--------------------------|-----------|-------------------------------|
| NO | DESCRIPTION | NO | DESCRIPTION |
| 1B | BALLAST TANK VALVE | 35C | CROSSOVER VALVE |
| 1C | CARGO TANK VALVE | 36C | PRESSURE GAUGE |
| 3C | MASTER SUCTION VALVE | 37C | CARGO DROP |
| 5C | DISCHARGE VALVE | 35S | DEEP WELL CAN STRIPPING VALVE |
| 8C | RELIEF VALVE | 10N | N2 PURGE VALVE |
| 9C | WAFER CHECK VALVE | 27V | 2" CAN VALVE |
| 13C | CARGO PIPING BLOCK VALVE | — | — ABOVE DECK PIPING |
| 19C | CARGO HEADER | - - - | BELOW DECK PIPING |
| 30C | CARGO PIPELINE | (A) | AUTOMATIC |
| 32S | PUMP PRIMING VALVE | (M) | MANUAL |

REV.	DATE	BY	CHK	APP	REVISION DESCRIPTION
2	10/05/23	MRV	DDA	DAR	REVISED PER CLIENT COMMENTS
1	02/17/20	MRV	DDA		REVISED PER CLIENT COMMENTS
0	12/12/18	MRV	DDA		ISSUED FOR APPROVAL

KIRBY INLAND MARINE

CARGO

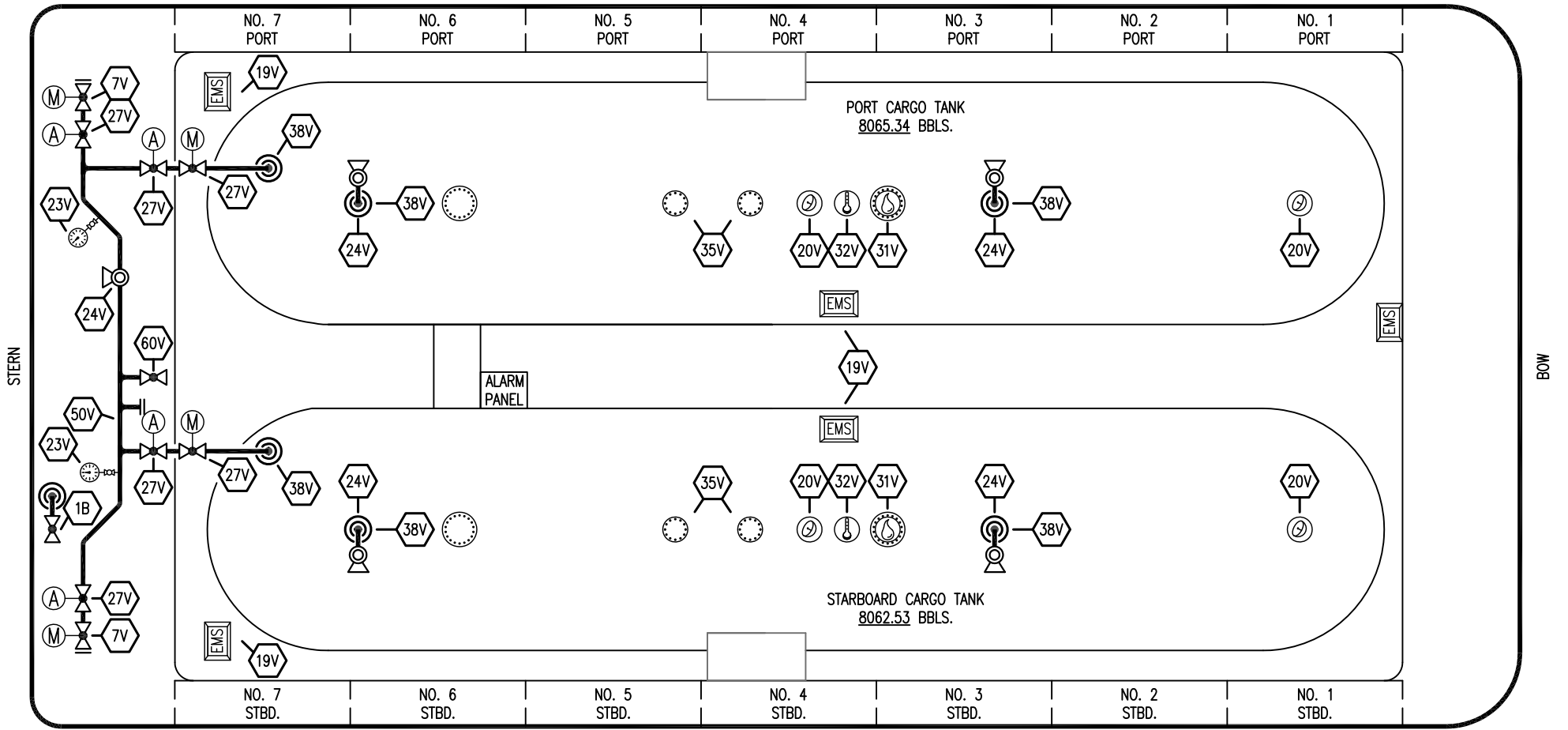
PIPING FLOW DIAGRAM

KIRBY 16835

SCALE: NONE
PAGE: 1 OF 2

REV. **2**

PORT



STARBOARD

NO	DESCRIPTION	NO	DESCRIPTION
1B	BALLAST TANK VALVE	35V	SPARE (NOZZLE)
7V	HEADER VALVE	38V	VAPOR DROP
19V	EMERGENCY ENGINE SHUT DOWN	50V	VAPOR HEADER
20V	RADAR GAUGE	60V	CROSSOVER VALVE
23V	PRESSURE GAUGE	—	ABOVE DECK PIPING
24V	PRESSURE RELIEF VALVE	(A)	AUTOMATIC
27V	VALVE	(M)	MANUAL
31V	SAMPLE		
32V	TEMPERATURE GAUGE		

REV.	DATE	BY	CHK	APP	REVISION DESCRIPTION
2	10/05/23	MRV	DDA	DAR	REVISED PER CLIENT COMMENTS
1	02/17/20	MRV	DDA		REVISED PER CLIENT COMMENTS
0	12/12/18	MRV	DDA		ISSUE FOR APPROVAL

KIRBY INLAND MARINE

VAPOR
PIPING FLOW DIAGRAM

SCALE: NONE	KIRBY 16835	REV.
PAGE: 2 OF 2		2