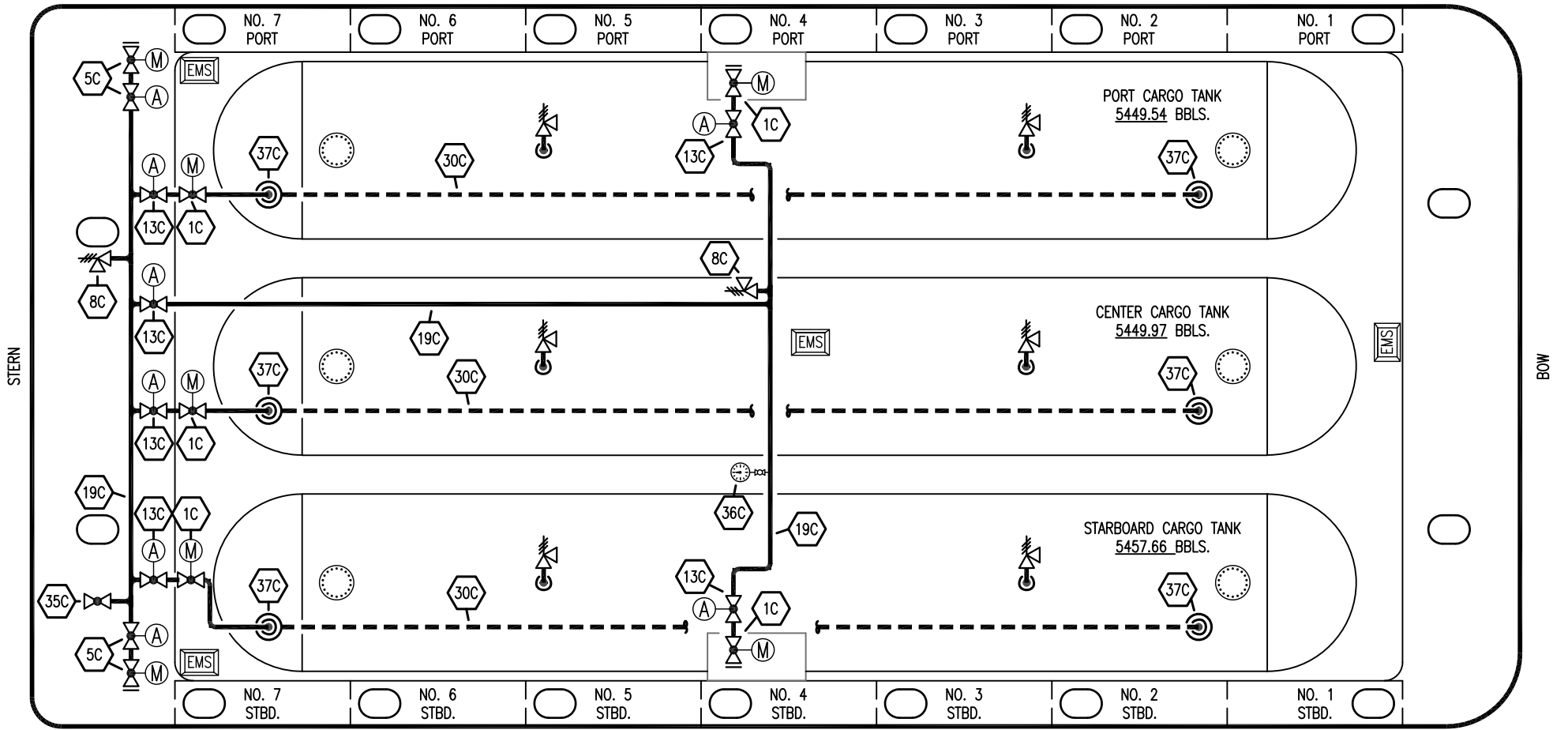


PORT



STARBOARD

- | | | | |
|-----------|--------------------------|-----------|--------------------|
| NO | DESCRIPTION | NO | DESCRIPTION |
| 1C | CARGO TANK VALVE | 35C | CROSSOVER VALVE |
| 5C | HEADER VALVE | 36C | PRESSURE GAUGE |
| 7C | STRIPPING BLOCK VALVE | 37C | CARGO DROP |
| 8C | RELIEF VALVE | | ABOVE DECK PIPING |
| 13C | CARGO PIPING BLOCK VALVE | | BELOW DECK PIPING |
| 19C | CARGO HEADER | (A) | AUTOMATIC |
| 30C | CARGO PIPELINE | (M) | MANUAL |
| 34V | LIQUID SPRAY BAR | | |

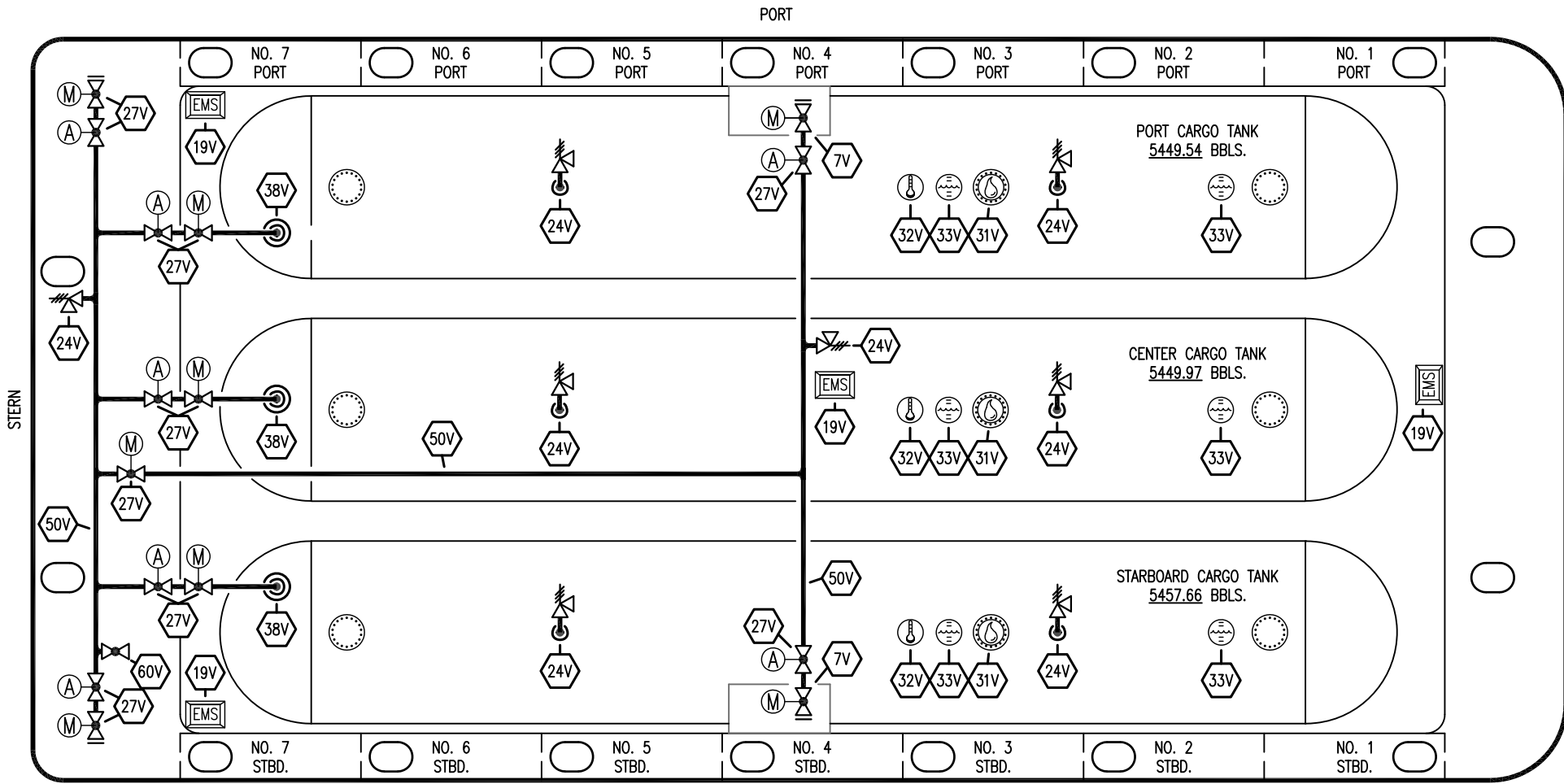
REV.	DATE	BY	CHK	APP	REVISION DESCRIPTION
1	04/08/24	AC	DDA	CW	REVISED PER CLIENT COMMENTS
0	07/11/23	MRV	DDA	CW	ISSUED FOR APPROVAL

KIRBY INLAND MARINE

CARGO

PIPING FLOW DIAGRAM

SCALE: NONE	KIRBY 16830	REV. 1
PAGE: 1 OF 2		



- | | | | |
|-----------|----------------------------|-----------|--------------------|
| NO | DESCRIPTION | NO | DESCRIPTION |
| 5V | BLOCK VALVE | 38V | VAPOR DROP |
| 7C | STRIPPING BLOCK VALVE | 50V | VAPOR HEADER |
| 7V | HEADER VALVE | 60V | CROSSOVER VALVE |
| 19V | EMERGENCY ENGINE SHUT DOWN | | ABOVE DECK PIPING |
| 23V | PRESSURE GAUGE | (A) | AUTOMATIC |
| 24V | PRESSURE RELIEF VALVE | (M) | MANUAL |
| 27V | VALVE | | |
| 31V | SAMPLE | | |
| 32V | TEMPERATURE GAUGE | | |
| 33V | DIGITAL FLOAT LEVEL GAUGE | | |

1	04/08/2024	AC	DDA	CW	REVISED PER CLIENT COMMENTS
0	07/11/23	MRV	DDA	CW	ISSUED FOR APPROVAL
REV.	DATE	BY	CHK	APP	REVISION DESCRIPTION

KIRBY INLAND MARINE

**VAPOR
PIPING FLOW DIAGRAM**

SCALE: NONE	KIRBY 16830	REV. 1
PAGE: 2 OF 2		