
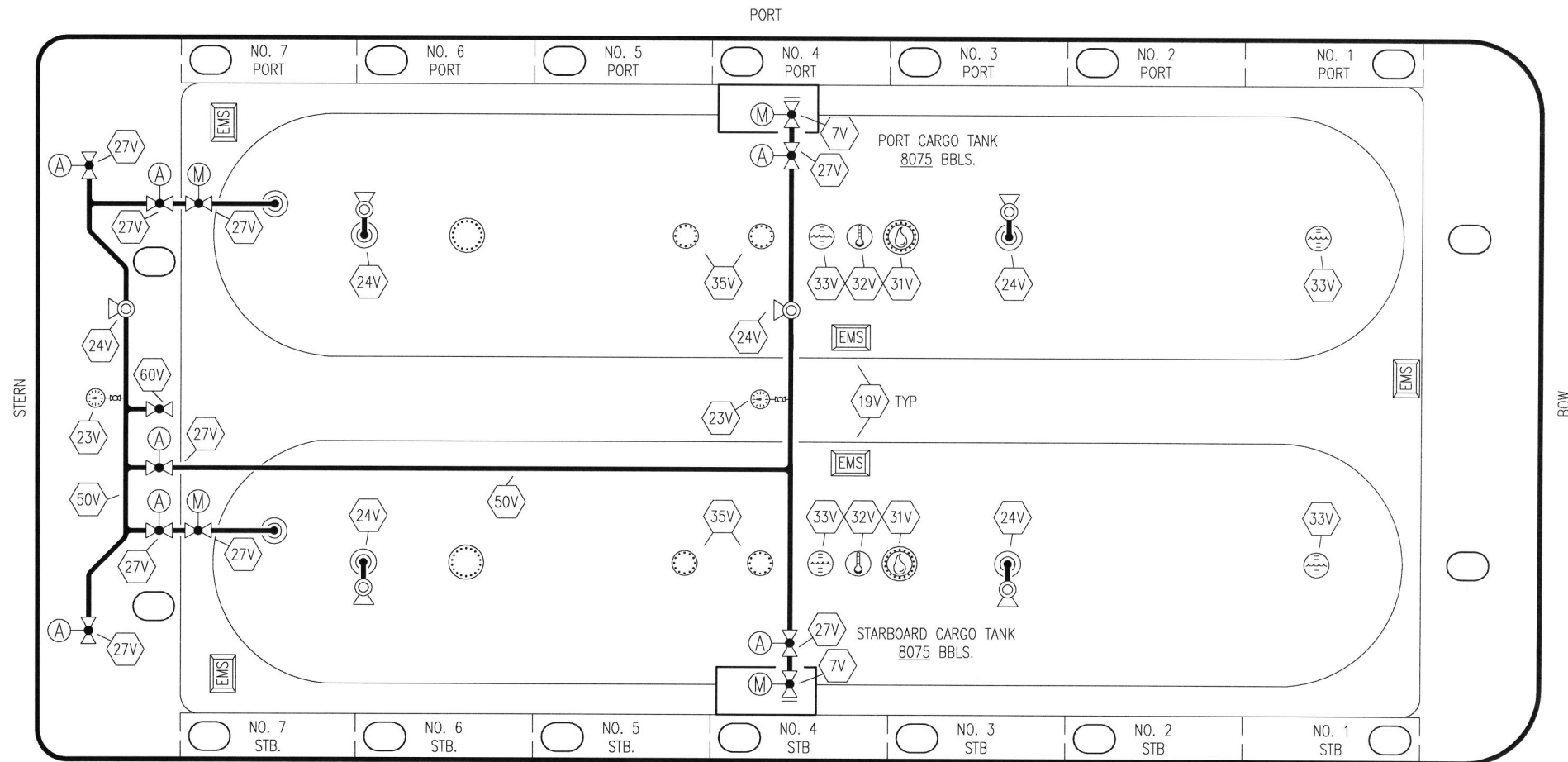



NO	DESCRIPTION	NO	DESCRIPTION
1C	CARGO TANK VALVE	35C	CROSSOVER VALVE
5C	HEADER VALVE	36C	PRESSURE GAUGE
7C	STRIPPING BLOCK VALVE	37C	CARGO DROP
8C	RELIEF VALVE	—	—
13C	CARGO PIPING BLOCK VALVE	—	—
19C	CARGO HEADER	(A)	AUTOMATIC
30C	CARGO PIPELINE	(M)	MANUAL
34V	LIQUID SPRAY BAR		

						KIRBY INLAND MARINE		
						CARGO		
						PIPING FLOW DIAGRAM		
0	01/15/20	MRV	DDA		ISSUED FOR APPROVAL	SCALE:	NONE	REV.
REV.	DATE	BY	CHK	APP	REVISION DESCRIPTION	PAGE:	1 OF 2	0

**KIRBY 16825**



NO	DESCRIPTION	NO	DESCRIPTION
5V	BLOCK VALVE	35V	SPARE (NOZZLE)
7C	STRIPPING BLOCK VALVE	38V	VAPOR DROP
7V	HEADER VALVE	50V	VAPOR HEADER
19V	EMERGENCY ENGINE SHUT DOWN	60V	CROSSOVER VALVE
23V	PRESSURE GAUGE		ABOVE DECK PIPING
24V	PRESSURE RELIEF VALVE	(A)	AUTOMATIC
27V	VALVE	(M)	MANUAL
31V	SAMPLE		
32V	TEMPERATURE GAUGE		
33V	DIGITAL FLOAT LEVEL GAUGE		

							KIRBY INLAND MARINE		
							VAPOR		
							PIPING FLOW DIAGRAM		
0	01/15/20	MRV	DDA			ISSUED FOR APPROVAL	SCALE:	NONE	KIRBY 16825
REV.	DATE	BY	CHK	APP	REVISION	DESCRIPTION	PAGE:	2 OF 2	
									0

REV.  
0