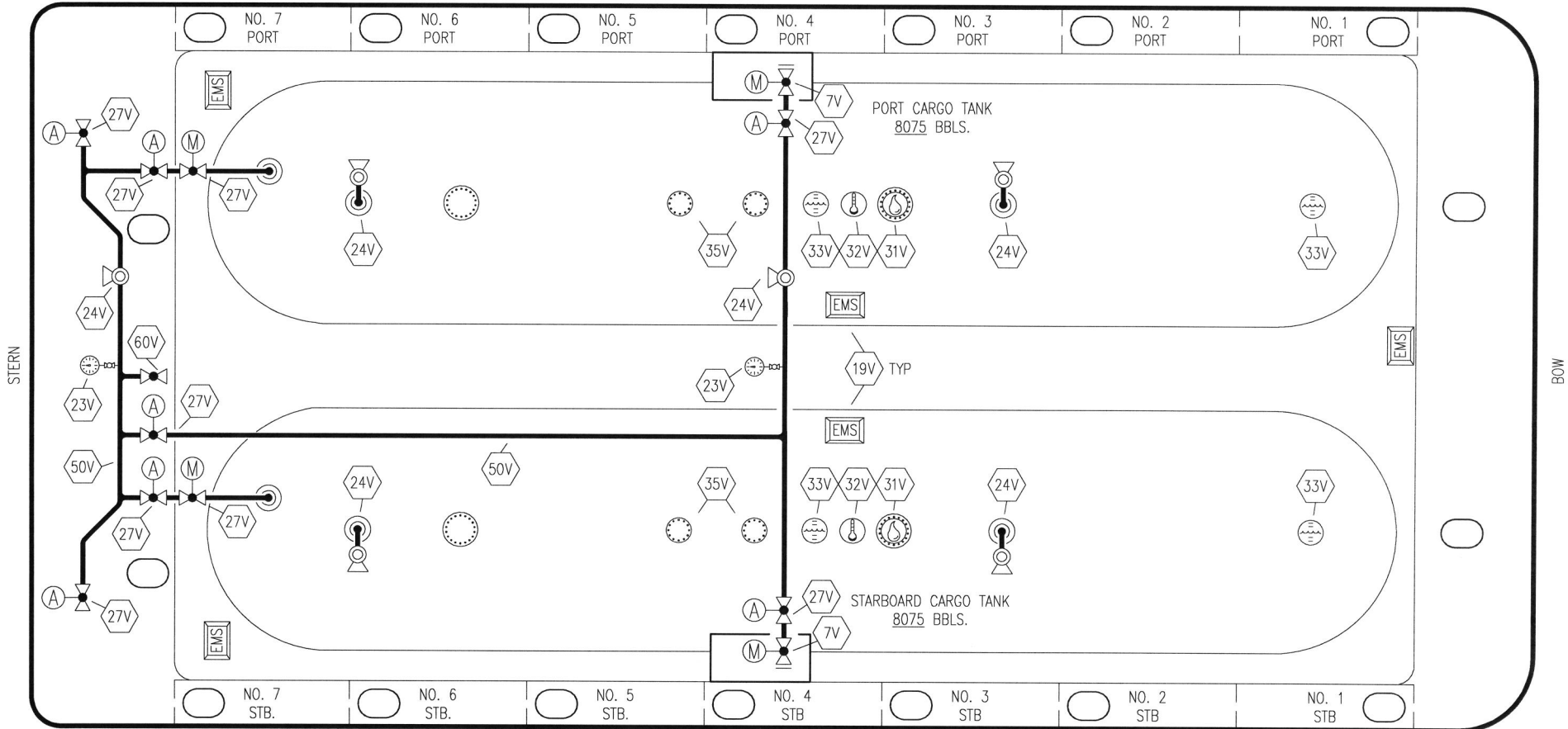


NO	DESCRIPTION	NO	DESCRIPTION
1C	CARGO TANK VALVE	35C	CROSSOVER VALVE
5C	HEADER VALVE	36C	PRESSURE GAUGE
7C	STRIPPING BLOCK VALVE	37C	CARGO DROP
8C	RELIEF VALVE	—	—
13C	CARGO PIPING BLOCK VALVE	—	—
19C	CARGO HEADER	(A)	AUTOMATIC
30C	CARGO PIPELINE	(M)	MANUAL
34V	LIQUID SPRAY BAR		

					KIRBY INLAND MARINE	
					CARGO	
					PIPING FLOW DIAGRAM	
0	01/15/20	MRV	DDA	ISSUED FOR APPROVAL		SCALE: NONE
REV.	DATE	BY	CHK	APP	REVISION DESCRIPTION	PAGE: 1 OF 2
					KIRBY 16817	
					REV. 0	

PORT



STERN

BOW

STARBOARD

NO	DESCRIPTION	NO	DESCRIPTION
5V	BLOCK VALVE	35V	SPARE (NOZZLE)
7C	STRIPPING BLOCK VALVE	38V	VAPOR DROP
7V	HEADER VALVE	50V	VAPOR HEADER
19V	EMERGENCY ENGINE SHUT DOWN	60V	CROSSOVER VALVE
23V	PRESSURE GAUGE	—	ABOVE DECK PIPING
24V	PRESSURE RELIEF VALVE	(A)	AUTOMATIC
27V	VALVE	(M)	MANUAL
31V	SAMPLE		
32V	TEMPERATURE GAUGE		
33V	DIGITAL FLOAT LEVEL GAUGE		

0	01/15/20	MRV	DDA	ISSUED FOR APPROVAL
REV.	DATE	BY	CHK APP	REVISION DESCRIPTION

KIRBY INLAND MARINE 

**VAPOR
PIPING FLOW DIAGRAM**

SCALE: NONE
PAGE: 2 OF 2

KIRBY 16817

REV. **0**