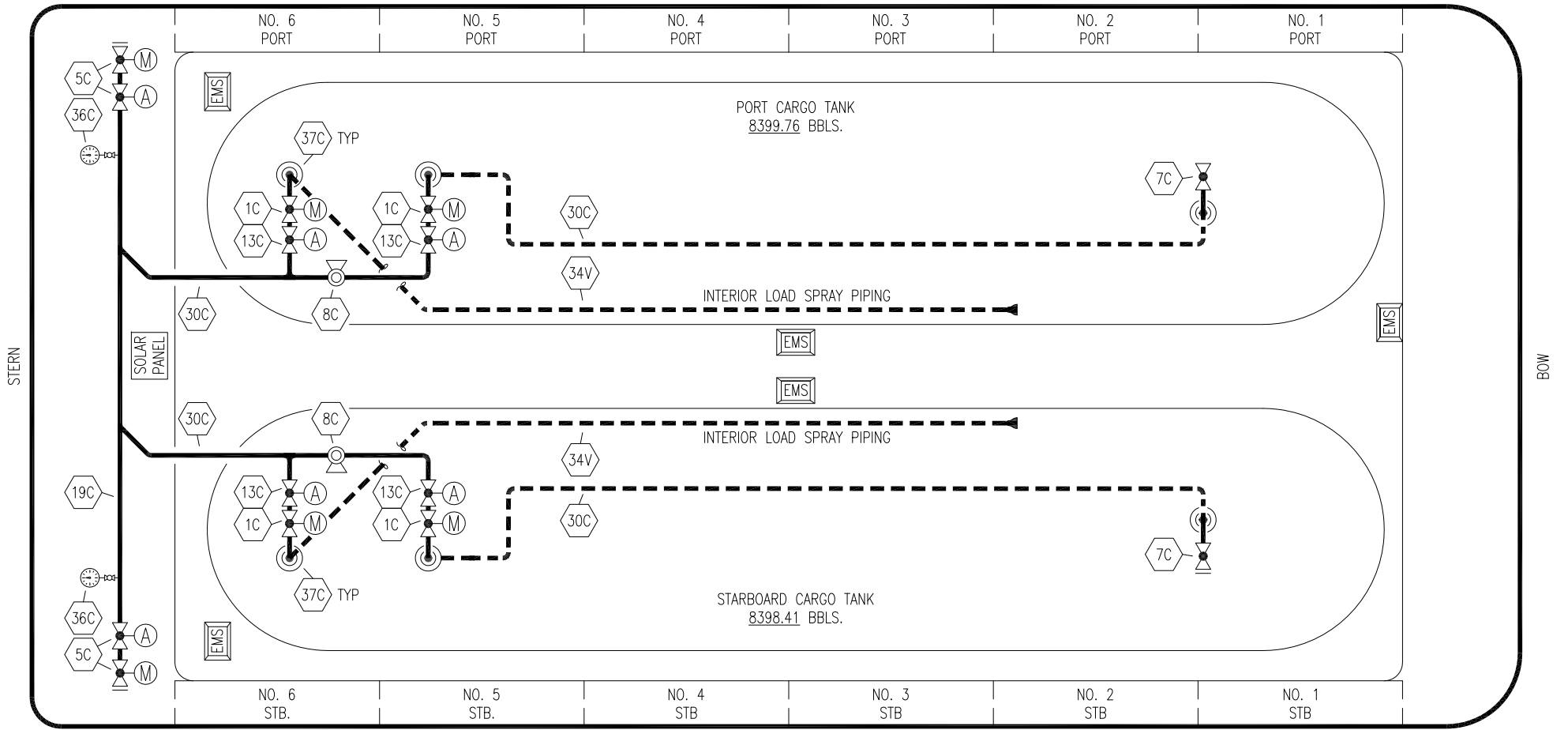


PORT



STERN

BOW

STARBOARD

NO	DESCRIPTION	NO	DESCRIPTION
1C	CARGO TANK VALVE	34V	LIQUID SPRAY BAR
5C	HEADER VALVE	36C	PRESSURE GAUGE
7C	STRIPPING BLOCK VALVE	37C	CARGO DROP
8C	RELIEF VALVE		ABOVE DECK PIPING
13C	CARGO PIPING BLOCK VALVE		BELOW DECK PIPING
19C	CARGO HEADER	(A)	AUTOMATIC
30C	CARGO PIPELINE	(M)	MANUAL

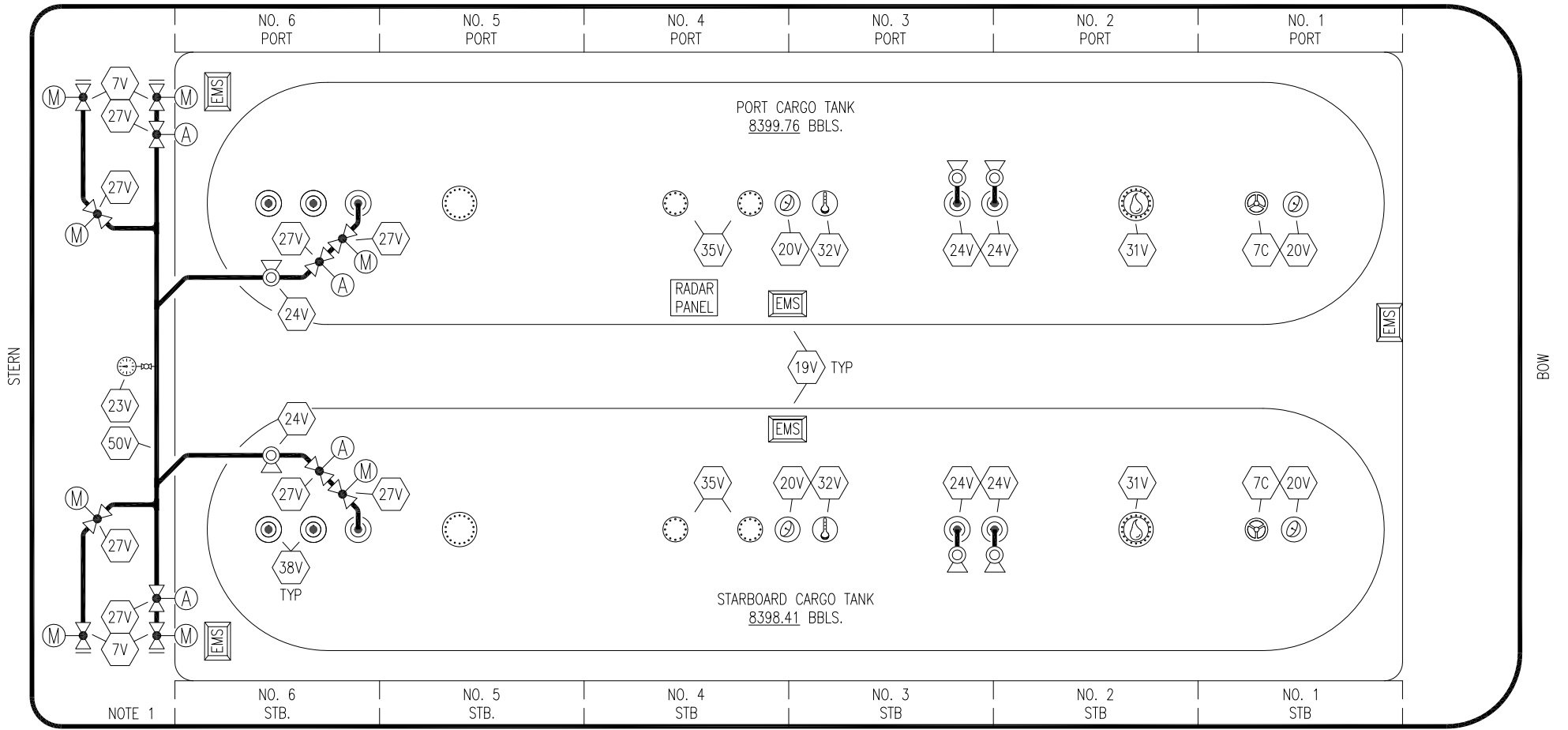
REV.	DATE	BY	CHK	APP	REVISION DESCRIPTION
1	01/28/22	MRV	DDA	DR	REVISED PER CLIENT COMMENTS
0	12/06/11	DCB	DDA		ISSUED FOR REVIEW

KIRBY INLAND MARINE

CARGO
PIPING FLOW DIAGRAM

SCALE: NONE	KIRBY 16815
PAGE: 1 OF 2	REV. 1

PORT



NOTE 1

STARBOARD

NO	DESCRIPTION	NO	DESCRIPTION
5V	BLOCK VALVE	35V	SPARE (NOZZLE)
7C	STRIPPING BLOCK VALVE	38V	VAPOR DROP
7V	HEADER VALVE	50V	VAPOR HEADER
19V	EMERGENCY ENGINE SHUT DOWN	—	ABOVE DECK PIPING
20V	RADAR GAUGING	A	AUTOMATIC
23V	PRESSURE GAUGE	M	MANUAL
24V	PRESSURE RELIEF VALVE		
27V	VALVE		
31V	SAMPLE		
32V	TEMPERATURE GAUGE		

1	01/28/22	MRV	DDA	DR	REVISED PER CLIENT COMMENTS
0	12/06/11	DCB	DDA		ISSUED FOR REVIEW
REV.	DATE	BY	CHK	APP	REVISION DESCRIPTION

KIRBY INLAND MARINE

VAPOR PIPING FLOW DIAGRAM

KIRBY 16815

SCALE: NONE	REV. 1
PAGE: 2 OF 2	