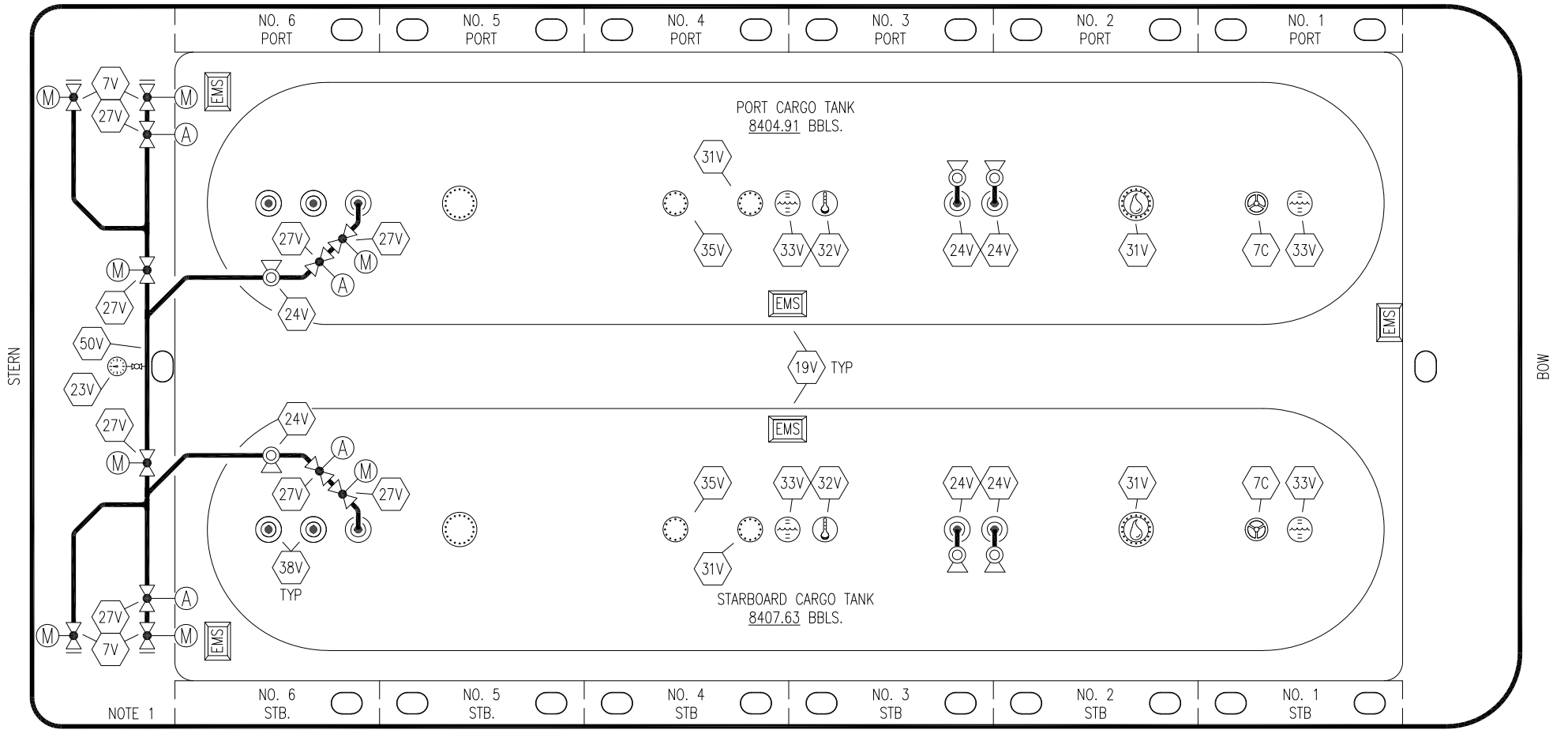


- |     |                          |     |                   |
|-----|--------------------------|-----|-------------------|
| NO  | DESCRIPTION              | NO  | DESCRIPTION       |
| 1C  | CARGO TANK VALVE         | 34V | LIQUID SPRAY BAR  |
| 5C  | HEADER VALVE             | 36C | PRESSURE GAUGE    |
| 7C  | STRIPPING BLOCK VALVE    | 37C | CARGO DROP        |
| 8C  | RELIEF VALVE             |     | ABOVE DECK PIPING |
| 13C | CARGO PIPING BLOCK VALVE |     | BELOW DECK PIPING |
| 19C | CARGO HEADER             | (A) | AUTOMATIC         |
| 30C | CARGO PIPELINE           | (M) | MANUAL            |

| REV. | DATE     | BY  | CHK | APP | REVISION DESCRIPTION        |
|------|----------|-----|-----|-----|-----------------------------|
| 2    | 08/12/21 | MRV | DDA | KW  | REVISED PER CLIENT COMMENTS |
| 1    | 12/05/14 | DDA | DDA |     | ADDED HATCHES               |
| 0    | 10/20/11 | DCB | DDA |     | ISSUED FOR REVIEW           |

|                            |                    |
|----------------------------|--------------------|
|                            |                    |
| <b>KIRBY INLAND MARINE</b> |                    |
| <b>CARGO</b>               |                    |
| <b>PIPING FLOW DIAGRAM</b> |                    |
| SCALE: NONE                | <b>KIRBY 16814</b> |
| PAGE: 1 OF 2               |                    |
|                            | <b>REV. 2</b>      |

PORT



NOTE 1

|           |                            |           |                    |
|-----------|----------------------------|-----------|--------------------|
| <b>NO</b> | <b>DESCRIPTION</b>         | <b>NO</b> | <b>DESCRIPTION</b> |
| 5V        | BLOCK VALVE                | 35V       | SPARE (NOZZLE)     |
| 7C        | STRIPPING BLOCK VALVE      | 38V       | VAPOR DROP         |
| 7V        | HEADER VALVE               | 50V       | VAPOR HEADER       |
| 19V       | EMERGENCY ENGINE SHUT DOWN | —         | ABOVE DECK PIPING  |
| 23V       | PRESSURE GAUGE             | A         | AUTOMATIC          |
| 24V       | PRESSURE RELIEF VALVE      | M         | MANUAL             |
| 27V       | VALVE                      |           |                    |
| 31V       | SAMPLE                     |           |                    |
| 32V       | TEMPERATURE GAUGE          |           |                    |
| 33V       | DIGITAL FLOAT LEVEL GAUGE  |           |                    |

STARBOARD

| REV. | DATE     | BY  | CHK | APP | REVISION DESCRIPTION        |
|------|----------|-----|-----|-----|-----------------------------|
| 3    | 08/12/21 | MRV | DDA | KW  | REVISED PER CLIENT COMMENTS |
| 2    | 12/05/14 | DDA | DDA |     | ADDED HATCHES               |
| 1    | 12/06/11 | DCB | DDA |     | MOVED SAMPLE                |
| 0    | 10/20/11 | DCB | DDA |     | ISSUED FOR REVIEW           |

KIRBY INLAND MARINE

VAPOR  
PIPING FLOW DIAGRAM

|              |             |      |
|--------------|-------------|------|
| SCALE: NONE  | KIRBY 16814 | REV. |
| PAGE: 2 OF 2 |             | 3    |