

- NO. 1C CARGO TANK VALVE
- NO. 2C LOAD VALVE
- NO. 5C HEADER VALVE
- NO. 8C RELIEF VALVE TO ATMOSPHERE SET @ 300#s
- NO. 8Ca BYPASS RELIEF VALVE SET @ 300#s
- NO. 19C CARGO HEADER
- NO. 30C CARGO PIPELINE
- NO. 37C CARGO DROP

- NO. 41C BLOCK VALVE
- BELOW DECK PIPING
- ABOVE DECK PIPING
- (A) AUTOMATIC ACUATOR

NOTE 1: 3" SPRAY LINE INSIDE TANK WITH 1/4" HOLES ON 18" CC.

NOTE 2: ALL VALVES ARE MANUALLY OPERATED UNLESS OTHERWISE NOTED.

JEFFBOAT — EX: DXE 1701P

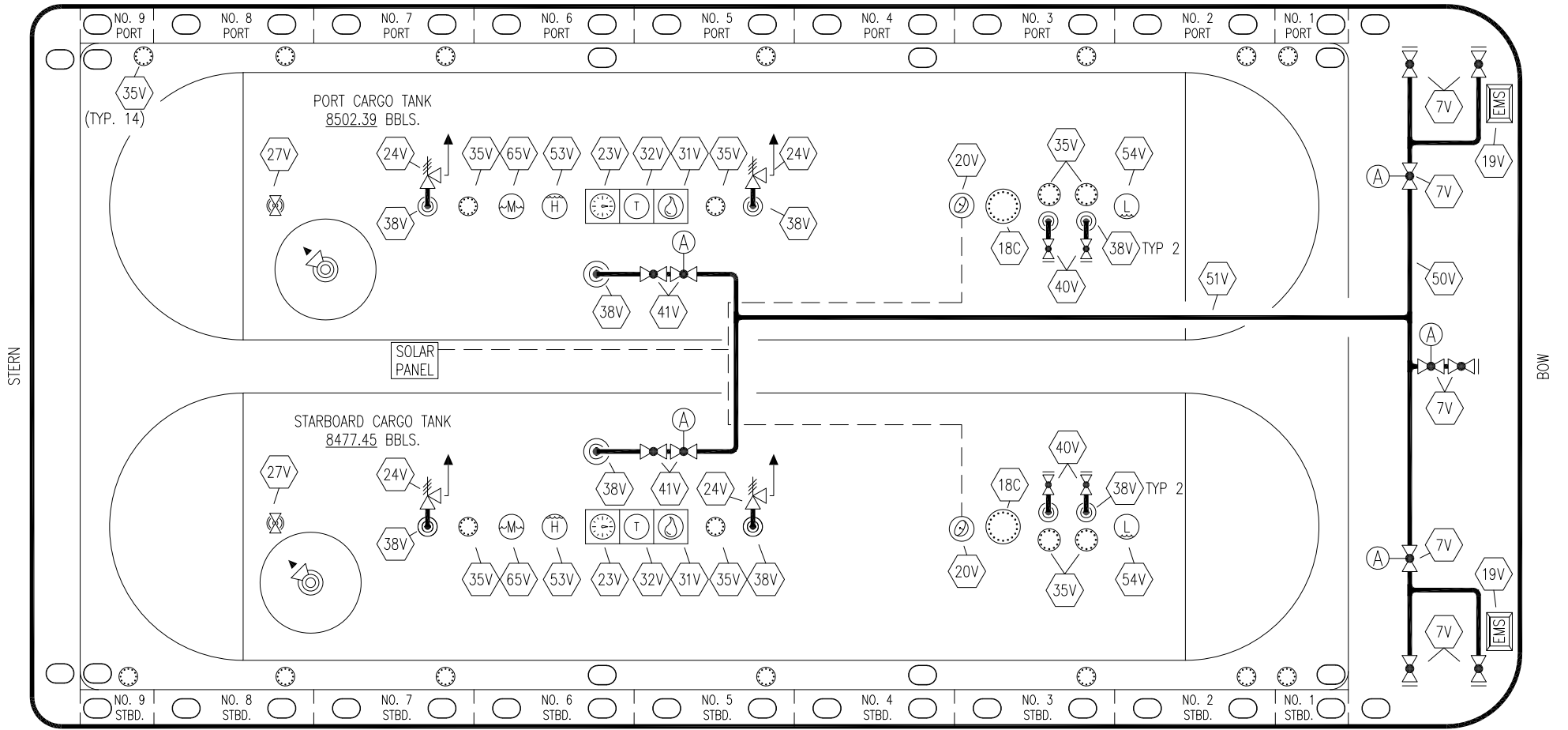
REV.	DATE	BY	CHK	APP	REVISION DESCRIPTION
1	07/18/22	MRV	DDA	DAR	REVISED PER CLIENT COMMENTS
0	11/09/09	LT	RB	OF	APPROVED

KIRBY INLAND MARINE

CARGO
PIPING FLOW DIAGRAM

SCALE: NONE	KIRBY 16809
PAGE: 1 OF 2	REV. 1

PORT



STARBOARD

- | | | | |
|-----|-----------------------------|-----|------------------------|
| NO | DESCRIPTION | NO | DESCRIPTION |
| 7V | HEADER VALVE | 40V | SAMPLE BLOCK VALVE |
| 18C | BOLTED MAN WAY | 41V | VAPOR TANK VALVE |
| 19V | EMERGENCY SHUT DOWN STATION | 50V | VAPOR HEADER |
| 20V | RADAR READER | 51V | VAPOR PIPELINE |
| 23V | PRESSURE GAUGE | 53V | HIGH LEVEL GAUGE STICK |
| 24V | PRESSURE RELIEF VALVE | 54V | LOW LEVEL GAUGE STICK |
| 27V | VALVE | 65V | MID-LEVEL GAUGE STICK |
| 31V | PRESSURE RELIEF VALVE | — | ABOVE DECK PIPING |
| 32V | SAMPLE | (A) | AUTOMATIC |
| 35V | SPARE (NOZZLE) | | |
| 38V | VAPOR PENETRATION | | |

NOTE 1: ALL VALVES ARE MANUALLY OPERATED UNLESS OTHERWISE NOTED.

JEFFBOAT — EX: DXE 1701P

REV.	DATE	BY	CHK	APP	REVISION DESCRIPTION
2	07/18/22	MRV	DDA	DAR	REVISED PER CLIENT COMMENTS
1	04/17/17	WFB	DDA		REVISED PER CLIENT COMMENTS
0	11/09/09	LT	RB	OF	APPROVED

KIRBY INLAND MARINE

VAPOR
PIPING FLOW DIAGRAM

KIRBY 16809

REV. 2

SCALE: NONE
PAGE: 2 OF 2