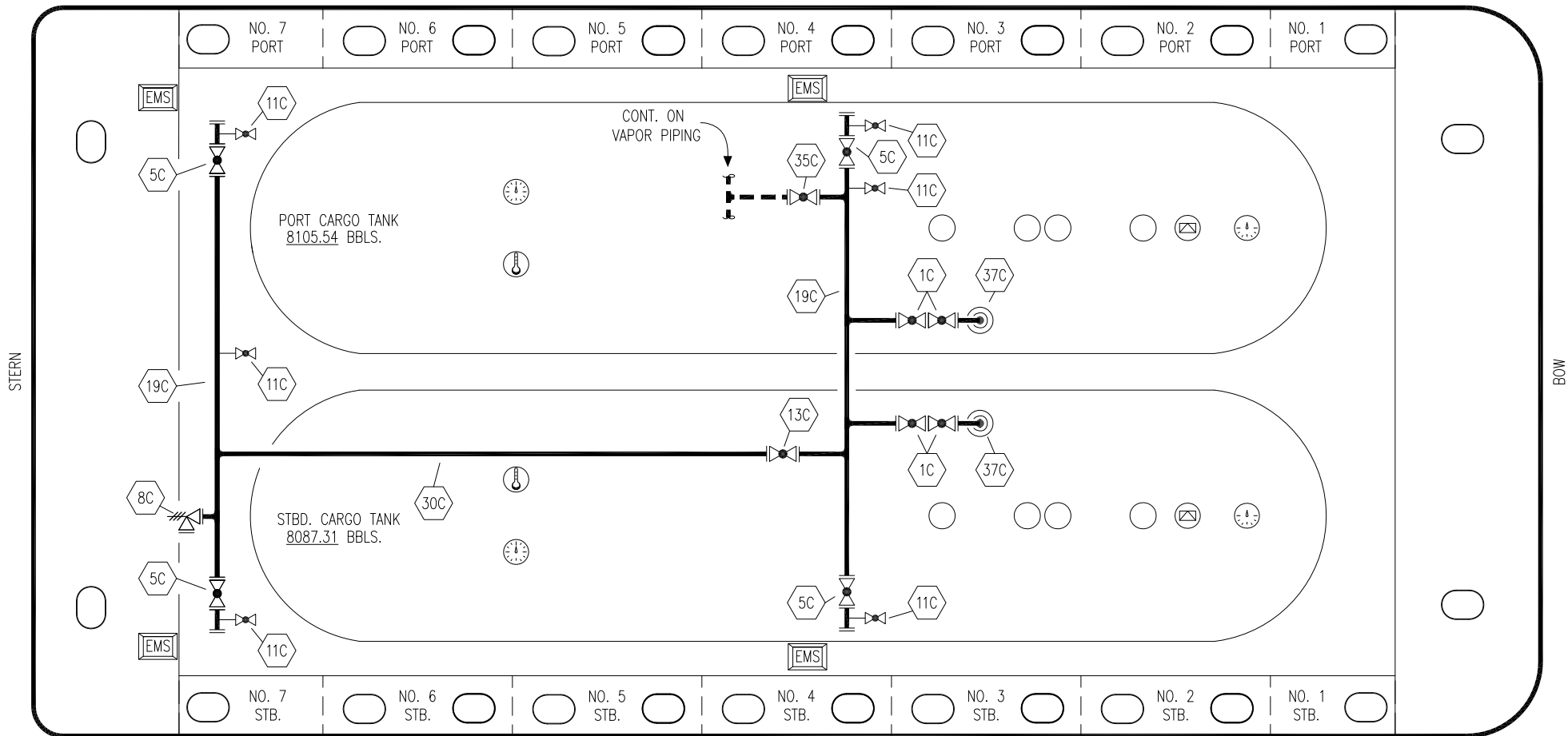


PORT



STARBOARD

NO DESCRIPTION

- 1C CARGO TANK VALVE
- 8C RELIEF VALVE
- 5C HEADER VALVE
- 11C BLEED VALVE
- 13C CARGO PIPING BLOCK VALVE
- 19C CARGO HEADER
- 30C CARGO PIPELINE
- 35C CROSSOVER VALVE
- 37C CARGO DROP

— ABOVE DECK PIPING

CARUTHERSVILLE SHIPYARD EX: HW CHEM 165

KIRBY INLAND MARINE 

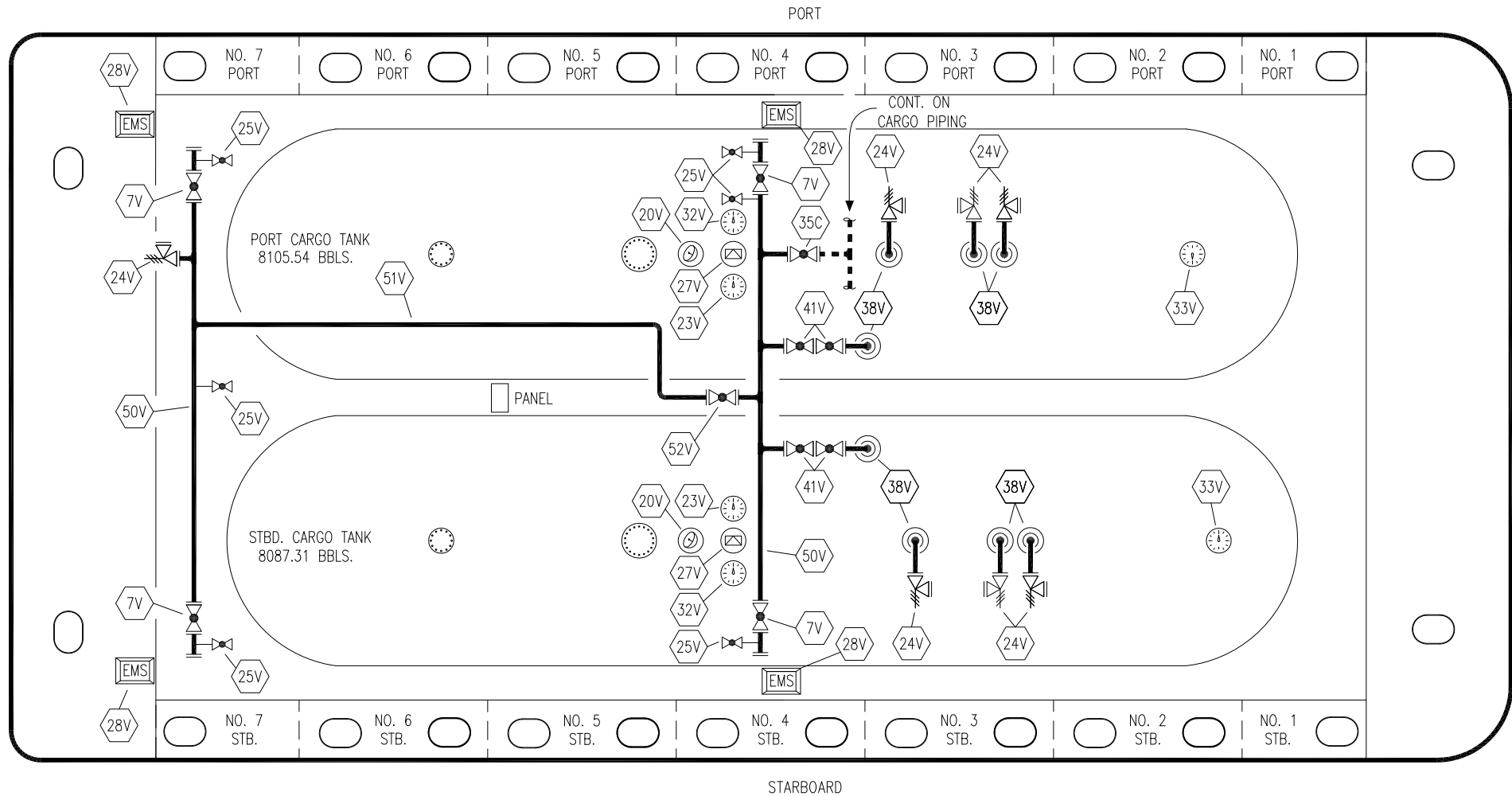
**CARGO
PIPING FLOW DIAGRAM**

REV.	DATE	BY	CHK	APP	REVISION DESCRIPTION
2	01/20/22	MRV	DDA	DR	REVISED PER CLIENT COMMENTS
1	02/26/14	GP	GP	GS	REVISED PER CLIENT
0	03/02/09	RB	RB	OF	APPROVED

SCALE: NONE
PAGE: 1 OF 2

KIRBY 16804

REV. **2**



NO	DESCRIPTION	NO	DESCRIPTION
7V	HEADER VALVE	33V	CALIBRATED SUMP GAUGE
11V	HI MID LOW GAUGESTICKS	35C	CROSSOVER VALVE
20V	RADAR GAUGING	38V	VAPOR DROP
23V	PRESSURE GAUGE	41V	VAPOR TANK VALVE
24V	PRESSURE RELIEF VALVE	50V	VAPOR HEADER
25V	VALVE (BLEEDER)	51V	VAPOR PIPELINE
27V	SPEW VALVE	52V	BLOCK VALVE
28V	EMERGENCY SHUT DOWN	—	ABOVE DECK PIPING
32V	TEMPERATURE GAUGE		

CARUTHERSVILLE SHIPYARD EX: HW CHEM 165

KIRBY INLAND MARINE 

**VAPOR
PIPING FLOW DIAGRAM**

REV.	DATE	BY	CHK	APP	REVISION DESCRIPTION
2	01/20/22	MRV	DDA	DR	REVISED PER CLIENT COMMENTS
1	02/26/14	GP	GP	GS	REVISED PER CLIENT
0	03/02/09	RB	RB	OF	APPROVED

SCALE: NONE
PAGE: 2 OF 2

KIRBY 16804 REV. **2**