

- | NO | DESCRIPTION |
|----------|--------------------------|
| 1C | CARGO TANK VALVE |
| 5C | HEADER VALVE |
| 8C | RELIEF VALVE |
| 13C | CARGO PIPING BLOCK VALVE |
| 19C | CARGO HEADER |
| 30C | CARGO PIPELINE |
| 35C | CROSSOVER VALVE |
| 36C | PRESSURE GAUGE |
| 37C | CARGO DROP |
| — | ABOVE DECK PIPING |

CARUTHERSVILLE SHIPYARD EX: HW CHEM 161

REV.	DATE	BY	CHK	APP	REVISION DESCRIPTION
1	01/15/20	MRV	DDA		REVISED PER CLIENT COMMENTS
0	03/02/09	RB	RB	OF	APPROVED

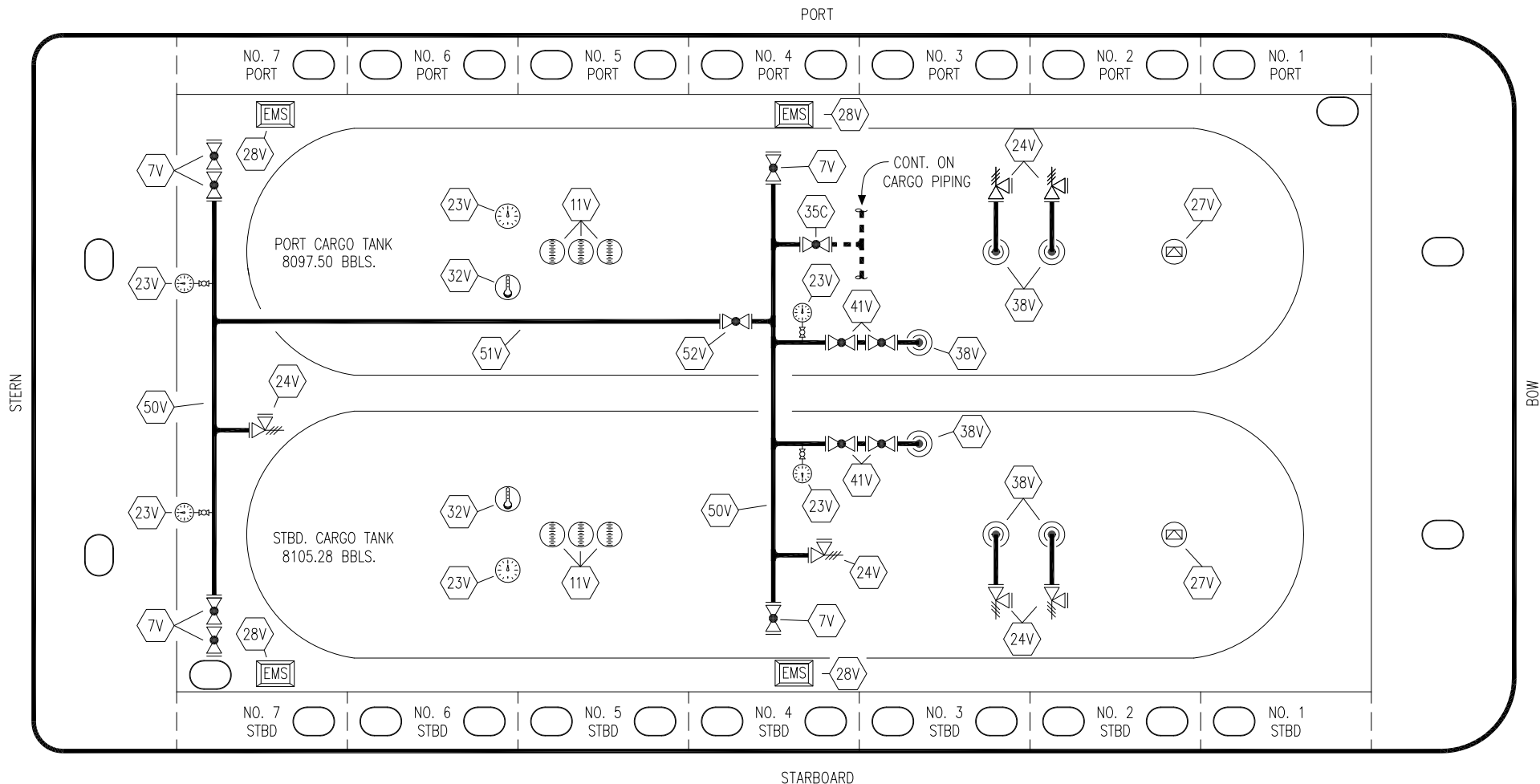
KIRBY INLAND MARINE 


**CARGO
PIPING FLOW DIAGRAM**

SCALE: NONE
PAGE: 1 OF 2

KIRBY 16802

REV. **1**



NO	DESCRIPTION	NO	DESCRIPTION
7V	HEADER VALVE	41V	VAPOR TANK VALVE
11V	1 METER GAUGE STICK	50V	VAPOR HEADER
23V	PRESSURE GAUGE	51V	VAPOR PIPELINE
24V	PRESSURE RELIEF VALVE	52V	BLOCK VALVE
27V	SPEW VALVE		ABOVE DECK PIPING
28V	EMERGENCY SHUT DOWN		
32V	TEMPERATURE GAUGE		
35C	CROSSOVER VALVE		
38V	VAPOR DROP		

CARUTHERSVILLE SHIPYARD EX: HW CHEM 161

KIRBY INLAND MARINE 

**VAPOR
PIPING FLOW DIAGRAM**

1	01/15/20	MRV	DDA		REVISED PER CLIENT COMMENTS
0	03/02/09	RB	RB	OF	APPROVED
REV.	DATE	BY	CHK	APP	REVISION DESCRIPTION

SCALE: NONE
PAGE: 2 OF 2

KIRBY 16802

REV. **1**